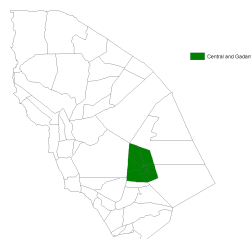


Index in Central and Gadamoji

This page provides the update on the predicted livestock mortality index and the summary of the underlying data in Central and Gadamoji for March - September 2012 (Long Rain Long Dry, LRLD) insurance coverage period based on the data up to 13-28 Sep 2012. For information on the definition of these variables, see <http://hdl.handle.net/10568/3408>.

Data up to 13-28 Sep 2012



Central and Gadamoji

For the details on index color, click [here](#).

Table 1. Summary

Index Area	Central and Gadamoji
Year	2012
Season	LRLD
Date of the most recent data	13-28 Sep 2012
Predicted Livestock Mortality	0.05
Czndvi_pre	12.98
Czndvi_pos	26.94
CNzndvi	0.15
CPzndvi	14.48

Figure 1. ZNDVI in Central and Gadamoji from October 2011 to September 2012

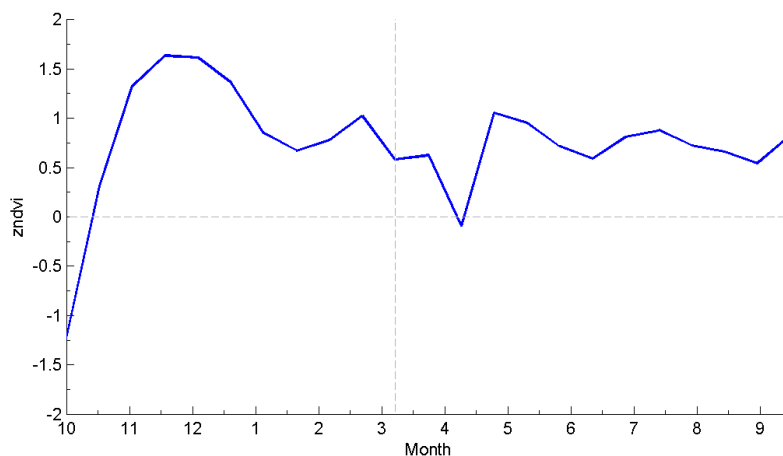


Figure 2. Czndvi in Central and Gadamoji from October 2011 to September 2012

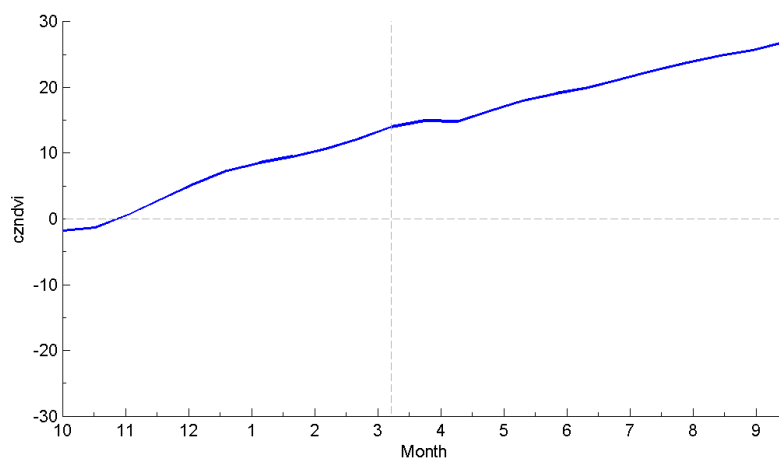


Table 2. zndvi

year	month	16-day	date	zndvi
2011	9	18	30 Sep 2011 - 15 Oct 2011	-1.23
2011	10	19	16-31 Oct 2011	0.31
2011	11	20	1-16 Nov 2011	1.33
2011	11	21	17 Nov 2011 - 2 Dec 2011	1.64
2011	12	22	3-18 Dec 2011	1.62
2011	12	23	19-31 Dec 2011	1.36
2012	1	1	1-16 Jan 2012	0.85
2012	1	2	17 Jan 2012 - 1 Feb 2012	0.67
2012	2	3	2-17 Feb 2012	0.78
2012	2	4	18 Feb 2012 - 4 Mar 2012	1.02
2012	3	5	5-20 Mar 2012	0.58
2012	3	6	21 Mar 2012 - 5 Apr 2012	0.63
2012	4	7	6-21 Apr 2012	-0.09
2012	4	8	22 Apr 2012 - 7 May 2012	1.05
2012	5	9	8-23 May 2012	0.96
2012	5	10	24 May 2012 - 8 Jun 2012	0.71
2012	6	11	9-24 Jun 2012	0.59
2012	6	12	25 Jun 2012 - 10 Jul 2012	0.81
2012	7	13	11-26 Jul 2012	0.88
2012	7	14	27 Jul 2012 - 11 Aug 2012	0.73
2012	8	15	12-27 Aug 2012	0.66
2012	8	16	28 Aug 2012 - 12 Sep 2012	0.54
2012	9	17	13-28 Sep 2012	0.82

For more information on the IBLI project, visit <http://livestockinsurance.wordpress.com>.