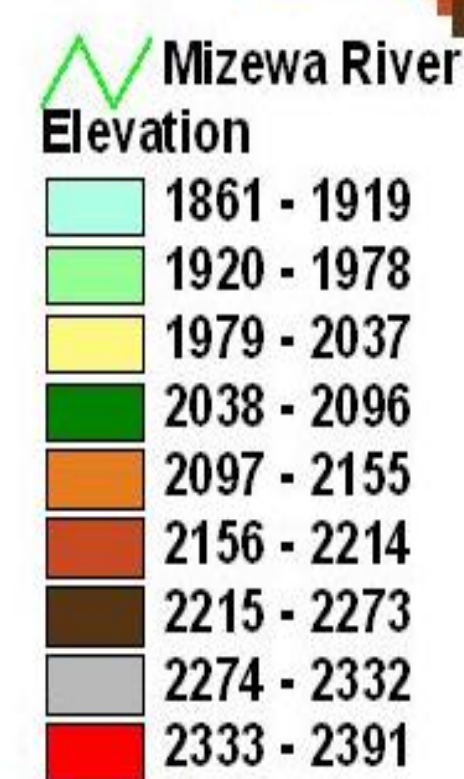
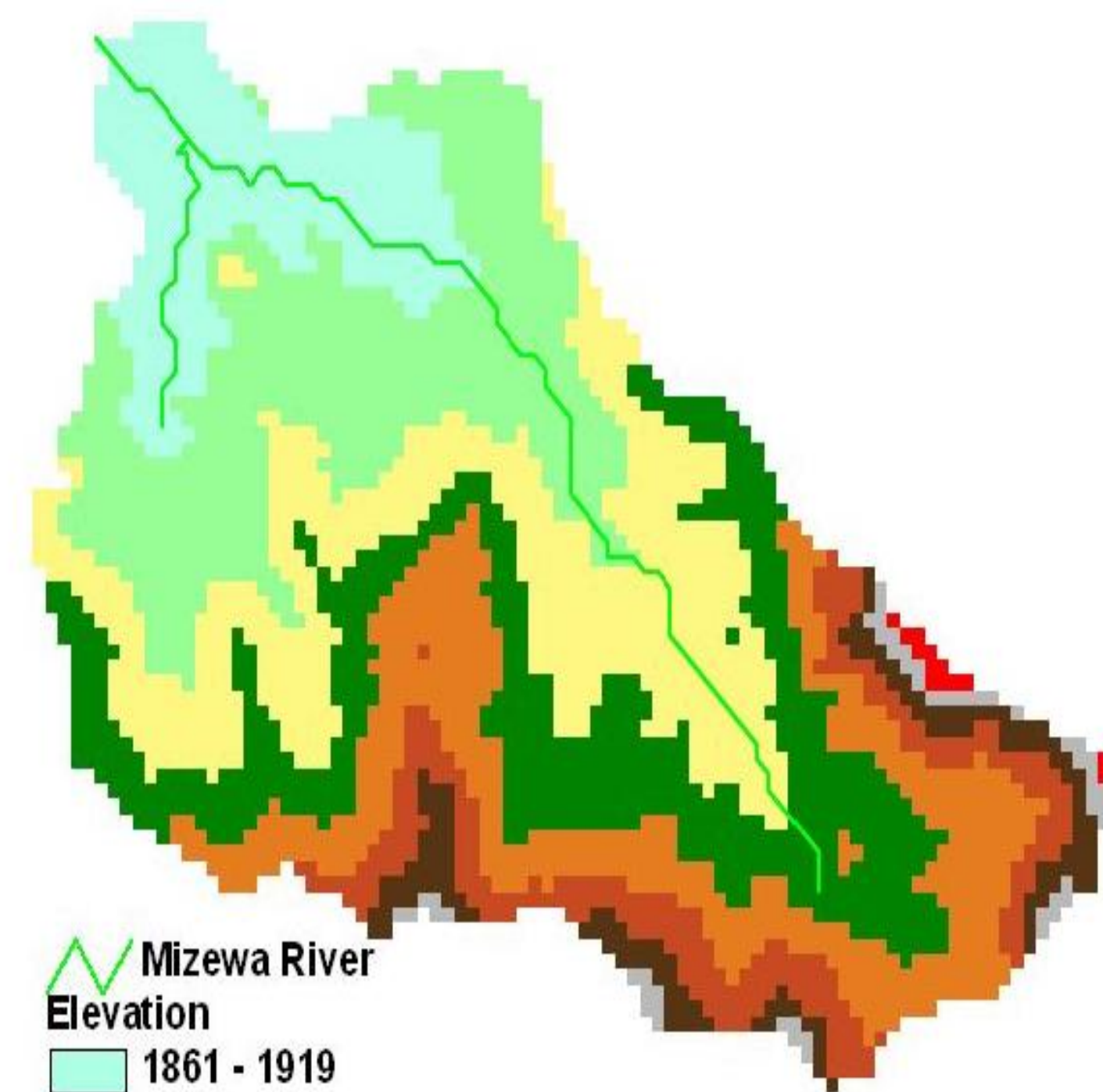


Integrated Rainwater Management Strategies: Hydrometric Monitoring Mizewa Watershed in Fogera Woreda

Description

- Located in the north-east of the Abbay basin, to the east of Lake Tana
- Tributary to Ribb river
- Rainfall: 1,000 – 1,500 mm
- Large flat floodplain in the vicinity of the lake and hilly catchments to the east
- Traditional diversions and increasingly small pumps used for irrigation



Area
27.0 km²



Rice cultivation



Trapezoidal pond

Interventions

- 18 trapezoidal RWH ponds (129m³) lined with geo-membranes have been constructed
- Soil conservation practices: terracing, zai pits, hydro-basins afforestation & protected areas
- 67 new RWH to be constructed by Ag. Bureau

Challenges

- Flooding and water logging
- Drying-up of streams in the dry season and hence water scarcity
- Conflicts between upstream and downstream water users
- Constructed rain water harvesting ponds failing for a variety of reasons



Water logging of Maize



Proposed location for flow monitoring

CPWF Nile Project 2:

Integrated rainwater management strategies – technologies, institutions and policies

Poster Prepared for the NBDC Launch Workshop, Addis Ababa, 29 September 2010