

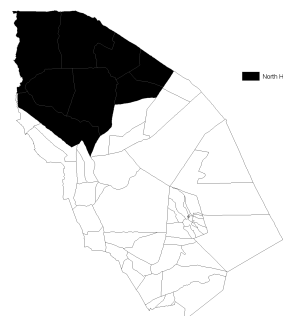
# Index in North Horr

Data up to 14-29 Sep 2011

This page provides the update on the predicted livestock mortality index and the summary of the underlying data in North Horr for March - September 2011 (Long Rain Long Dry, LRLD) insurance coverage period based on the data up to 14-29 Sep 2011. For information on the definition of these variables, see <http://hdl.handle.net/10568/3408>.

**Table 1. Summary**

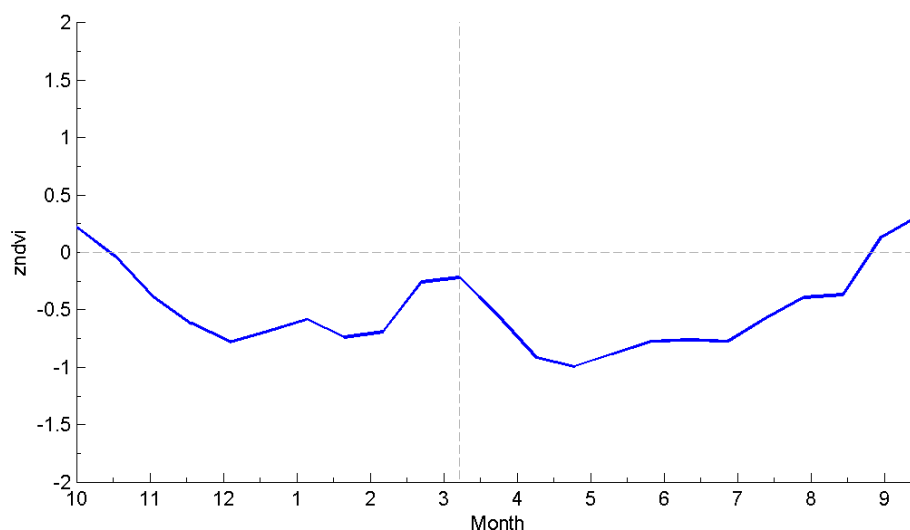
Index Area	North Horr
Year	2011
Season	LRLD
Date of the most recent data	14-29 Sep 2011
Predicted Livestock Mortality	0.28
Czndvi_pre	-6.94
Czndvi_pos	-17.70
CNzndvi	11.65
CPzndvi	0.73



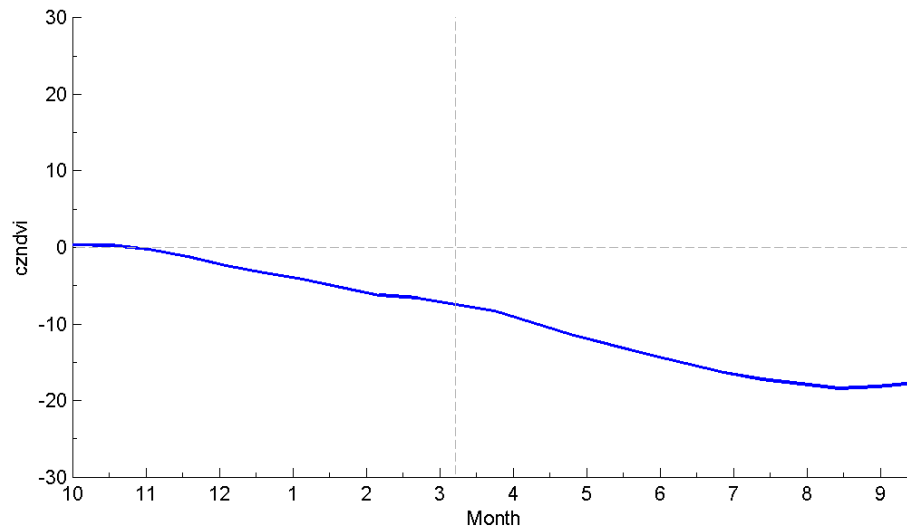
North Horr

For the details on index color, click [here](#).

**Figure 1. ZNDVI in North Horr from October 2010 to September 2011**



**Figure 2. Czndvi in North Horr from October 2010 to September 2011**



**Table 2. zndvi**

year	month	16-day	date	zndvi
2010	9	18	30 Sep 2010 - 15 Oct 2010	0.22
2010	10	19	16-31 Oct 2010	-0.03
2010	11	20	1-16 Nov 2010	-0.39
2010	11	21	17 Nov 2010 - 2 Dec 2010	-0.62
2010	12	22	3-18 Dec 2010	-0.78
2010	12	23	19-31 Dec 2010	-0.69
2011	1	1	1-16 Jan 2011	-0.58
2011	1	2	17 Jan 2011 - 1 Feb 2011	-0.74
2011	2	3	2-17 Feb 2011	-0.69
2011	2	4	18 Feb 2011 - 5 Mar 2011	-0.26
2011	3	5	6-21 Mar 2011	-0.22
2011	3	6	22 Mar 2011 - 6 Apr 2011	-0.55
2011	4	7	7-22 Apr 2011	-0.92
2011	4	8	23 Apr 2011 - 8 May 2011	-0.99
2011	5	9	9-24 May 2011	-0.88
2011	5	10	25 May 2011 - 9 Jun 2011	-0.78
2011	6	11	10-25 Jun 2011	-0.76
2011	6	12	26 Jun 2011 - 11 Jul 2011	-0.78
2011	7	13	12-27 Jul 2011	-0.57
2011	7	14	28 Jul 2011 - 12 Aug 2011	-0.39
2011	8	15	13-28 Aug 2011	-0.37
2011	8	16	29 Aug 2011 - 13 Sep 2011	0.13
2011	9	17	14-29 Sep 2011	0.32

For more information on the IBLI project, visit <http://livestockinsurance.wordpress.com>.

