

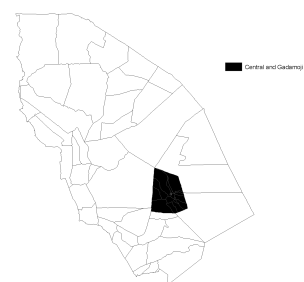
Index in Central and Gadamoji

Data up to 29 Aug 2011 - 13 Sep 2011

This page provides the update on the predicted livestock mortality index and the summary of the underlying data in Central and Gadamoji for March - September 2011 (Long Rain Long Dry, LRLD) insurance coverage period based on the data up to 29 Aug 2011 - 13 Sep 2011. For information on the definition of these variables, see <http://hdl.handle.net/10568/3408>.

Table 1. Summary

Index Area	Central and Gadamoji
Year	2011
Season	LRLD
Date of the most recent data	29 Aug 2011 - 13 Sep 2011
Predicted Livestock Mortality	0.25
Czndvi_pre	-10.49
Czndvi_pos	-27.11
CNzndvi	16.91
CPzndvi	0.00



Central and Gadamoji

For the details on index color, click [here](#).

Figure 1. ZNDVI in Central and Gadamoji from October 2010 to September 2011

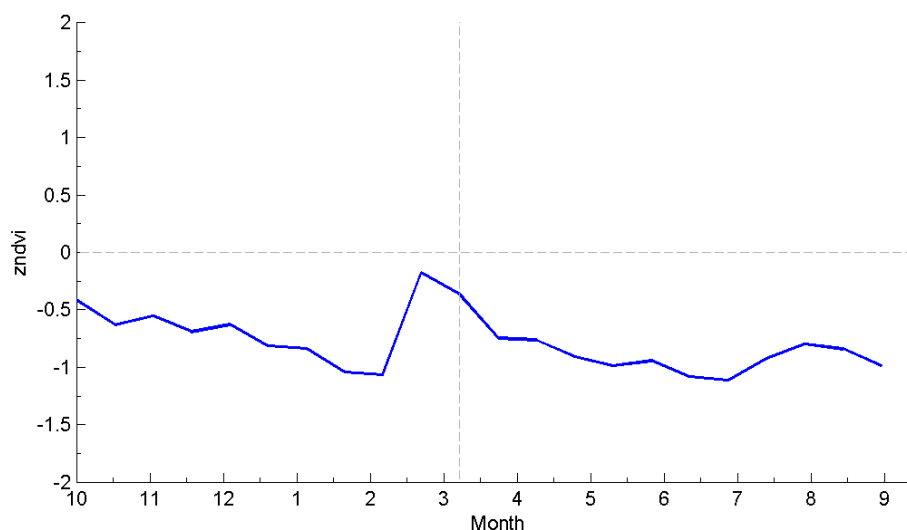


Figure 2. Czndvi in Central and Gadamoji from October 2010 to September 2011

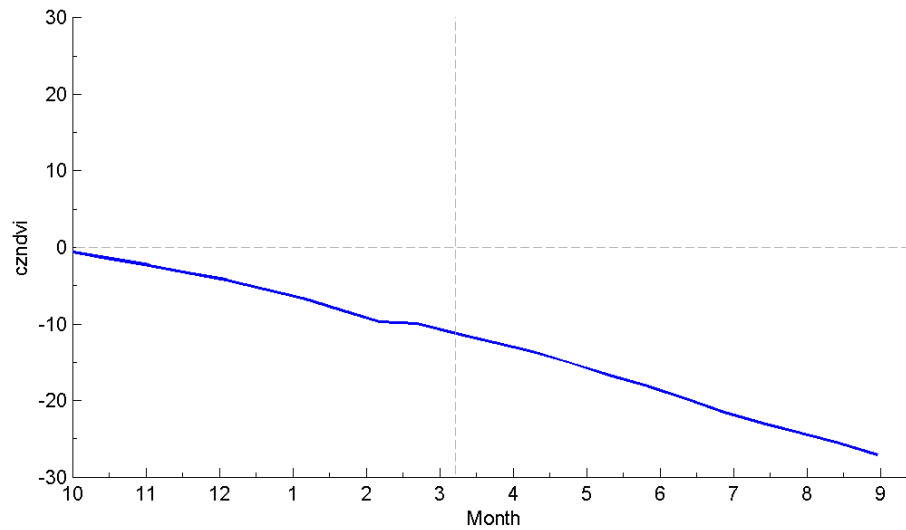


Table 2. zndvi

year	month	16-day	date	zndvi
2010	9	18	30 Sep 2010 - 15 Oct 2010	-0.41
2010	10	19	16-31 Oct 2010	-0.63
2010	11	20	1-16 Nov 2010	-0.55
2010	11	21	17 Nov 2010 - 2 Dec 2010	-0.69
2010	12	22	3-18 Dec 2010	-0.63
2010	12	23	19-31 Dec 2010	-0.81
2011	1	1	1-16 Jan 2011	-0.84
2011	1	2	17 Jan 2011 - 1 Feb 2011	-1.04
2011	2	3	2-17 Feb 2011	-1.06
2011	2	4	18 Feb 2011 - 5 Mar 2011	-0.18
2011	3	5	6-21 Mar 2011	-0.36
2011	3	6	22 Mar 2011 - 6 Apr 2011	-0.75
2011	4	7	7-22 Apr 2011	-0.76
2011	4	8	23 Apr 2011 - 8 May 2011	-0.91
2011	5	9	9-24 May 2011	-0.99
2011	5	10	25 May 2011 - 9 Jun 2011	-0.94
2011	6	11	10-25 Jun 2011	-1.08
2011	6	12	26 Jun 2011 - 11 Jul 2011	-1.11
2011	7	13	12-27 Jul 2011	-0.93
2011	7	14	28 Jul 2011 - 12 Aug 2011	-0.80
2011	8	15	13-28 Aug 2011	-0.84
2011	8	16	29 Aug 2011 - 13 Sep 2011	-0.99

For more information on the IBLI project, visit <http://livestockinsurance.wordpress.com>.