



## Scope and Maturity

- ♦ **Approach & tools** developed & available online
- ♦ **37 research interventions** assessed for 5 RTB crops
- ♦ **High projected benefits**
- ♦ **Publications:** 10 RTB Working Papers, 4 peer-reviewed journal papers

Approach can help direct limited funds to research areas with greatest payoff and increase efficiency and transparency of resource allocation.

## Challenges and learning

### Strategic & decision-making

Develop '*Theory of Change*' and uptake pathways with key stakeholders/users

### Methodology

Mixed-methods approaches for additional impacts (environmental sustainability, gender equity)

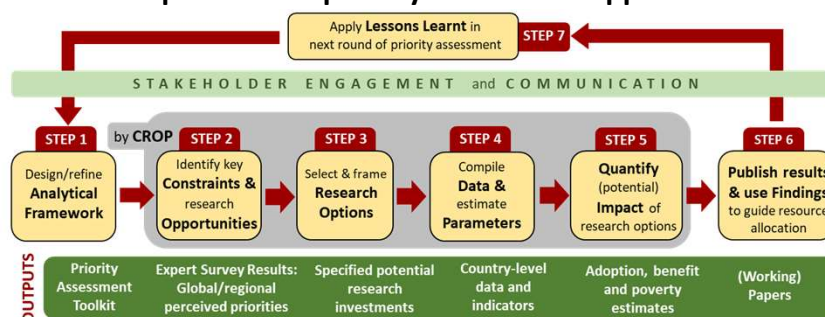
### Operation

Data accuracy; consistency of assumptions; stakeholder engagement

## Strategic Research Priority Assessment Toolkit

Which problems should scientists address first, and which solutions are more likely to have a positive impact on food security and livelihoods?

### Step-wise RTB priority assessment approach



### Selected results

Top ranked research options by crop	Adoption (million ha)	Beneficiaries (million HH)	Net Present Value (US\$ million)	Internal rate of return (%)	Poverty Reduction (million persons)
<b>Banana</b>					
BXW management: cultural practices	0.64	3.22	1,982	72	1.61
Recovery from banana bunchy top virus (BBTV)	0.40	2.02	1,337	61	0.64
<b>Cassava</b>					
High-quality planting material production and distribution systems for improved varieties	3.38	6.73	7,585	416	2.10
Sustainable crop and soil fertility management	3.27	6.43	8,284	210	2.66
<b>Potato</b>					
Late Blight resistance	0.77	2.11	2,303	68	0.35
Virus-resistant varieties	0.36	0.87	1,909	82	0.31
<b>Sweetpotato</b>					
Orange-flesh sweetpotato (OFSP)*	0.67	3.00	563	35	0.48
Weevil-resistant varieties	0.72	2.94	363	41	0.36
<b>Yam</b>					
Clean planting materials & agronomic practices	0.68	2.39	570	37	0.18
Improved varieties with complementary ICM	0.43	1.58	2,026	60	0.66

\* Health benefits from adoption of OFSP (DALY method) increases benefits: NPV: US\$1,298 million, IRR: 51% (lower adoption scenario).

T. Abdoulaye, A. Alene, G. Hareau, U. Kleinwechter, R. Labarta, D. Pems, C. Staver, and G. Thiele

Contact: Guy Hareau  
g.hareau@cgiar.org



## Outcomes

- ♦ Results have informed RTB research portfolio decisions
- ♦ Subsequent assessments by RTB Centers
- ♦ Approach and results published and cited

## Expected further outcomes

- ♦ Demand from EiB, EiA platforms
- ♦ Contribution to priority setting methods and culture in One CGIAR
- ♦ Use by One CGIAR Initiatives and national partners to inform research priority decisions

## Next Steps

Documentation and sharing of all compiled information, data and tools

Interdisciplinary cooperation to broaden approach and methods; enabling quicker, lower cost studies

Fine-tuning: Integrate *ex ante* and *ex post*

Collaborate with "*Foresight and Metrics*" Initiative on methods development; with other Initiatives as potential users