

AfDB Livestock Investment Master Plan (LIVEMAP)



Iain Wright

Deputy Director General, Research and Development - Integrated Sciences, ILRI

Chair, AfDB LIVEMAP Technical Working Group

LIVEMAP Validation Workshop
11 December 2020

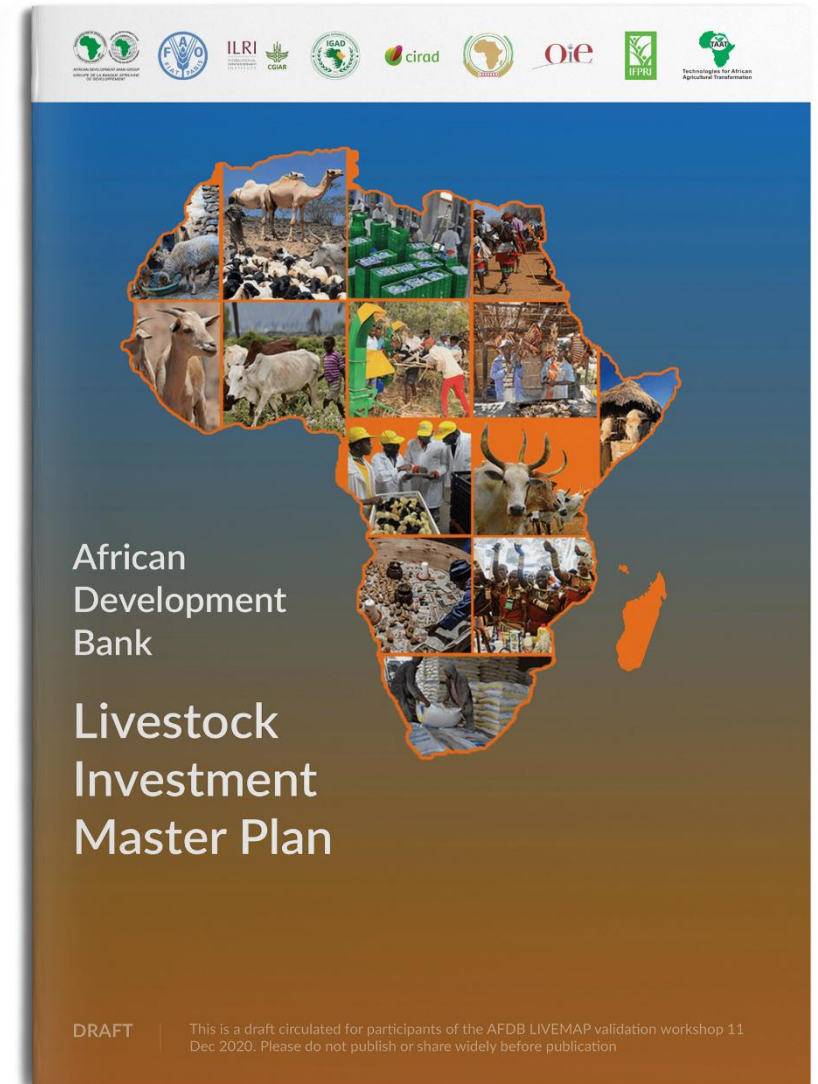


LIVEMAP – Context and Purpose

The African Development Bank (AfDB) 'Feed Africa' strategy, and the Bank's 10-Year strategy, identify livestock priorities across value chains and agro-ecological zones.

Provided the impetus for the AfDB to develop a holistic Livestock Investment Master Plan (LIVEMAP) for transforming Africa's livestock subsector

The LIVEMAP will support the AfDB Feed Africa Strategy by guiding and prioritizing evidence-based investment options made by the AfDB and Regional Member Countries (RMCs) aligned with continental (e.g. AU, RECs) and country priorities.



The Livestock Sector in Africa

The livestock sector represents an opportunity to help support the achievement of the SDGs by 2030

Globally and across Africa, the livestock sector accounts for about 40% of agricultural GDP. Despite the importance of the sector however, the level of investment in livestock remains low.



**NO
POVERTY**



**ZERO
HUNGER**



**GOOD
HEALTH AND
WELL-BEING**



**GENDER
EQUALITY**



**DECENT
WORK AND
ECONOMIC
GROWTH**



**RESPONSIBLE
CONSUMPTION
AND
PRODUCTION**



**CLIMATE
ACTION**



**LIFE ON
LAND**

The Livestock Sector in Africa - Trends



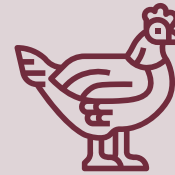
Demand for animal-source foods is rising rapidly across the African continent and this growth is projected to increase by 2-3 times, by 2050 depending on region and commodity



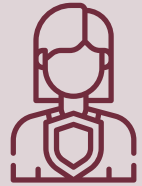
Smallholder farmers provide the bulk of today's staple foods and livestock products in African countries



Livestock value chains provide large number of jobs and contribute to economic growth



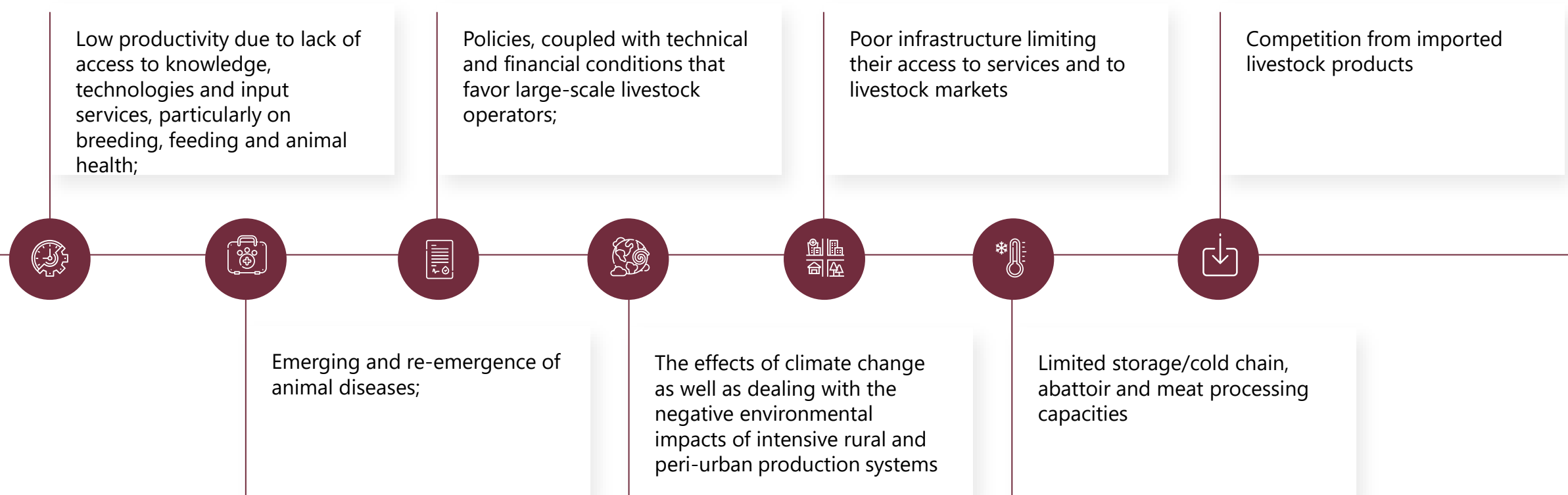
Animal source foods are critical for good nutrition, especially in vulnerable groups - Africa is losing 10% of its GDP due to stunting.



Livestock can be a vehicle for transforming women's lives

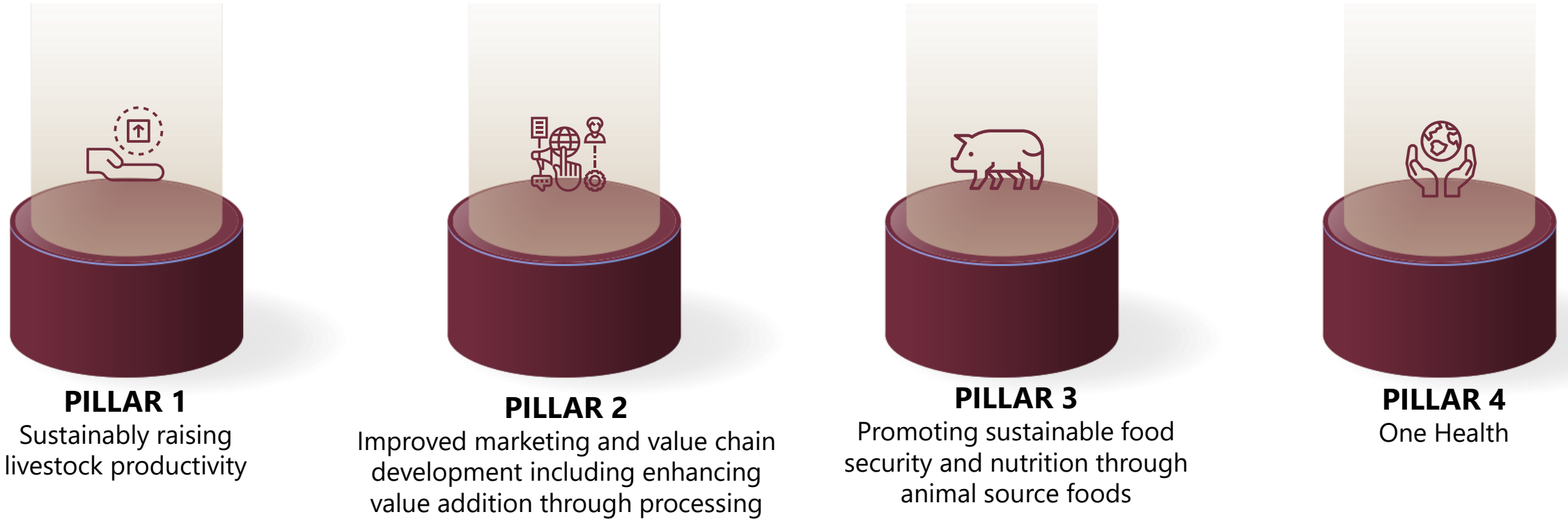
The Livestock Sector in Africa – Challenges

Small and medium-sized livestock producers, face many complex and interlinked constraints such as:



Strategic focus of the livestock investment master plan

6



CROSS-CUTTING THEME 1 Policy support to transform the livestock sector



CROSS-CUTTING THEME 2 Gender equality, youth and social inclusion



PILLAR 1

Sustainably raising livestock productivity

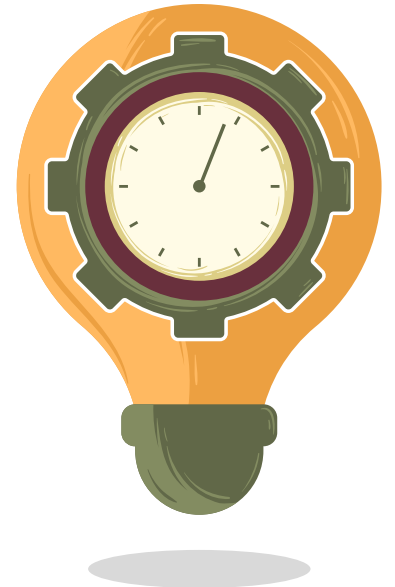
Increase livestock productivity through targeted genetic improvement, animal health and better feeds by improving access to supplies, services and knowledge. The provision of inputs and services by the private sector will be encouraged though an appropriate business environment, regulatory framework etc. Public private partnerships will be encouraged where relevant.

Will include fostering sustainability and resilience at the same time with respect to the climate-readiness of livestock systems, improved biodiversity and agro-ecological systems.

Technologies and interventions will be sensitive to the needs of different categories of livestock keepers including women.

Special attention will be paid to pastoral and agropastoral systems, where much of the livestock is kept

Increasing productivity has a huge impact on greenhouse gas emission intensities





PILLAR 2

Improved marketing and value chain development including enhancing value addition through processing

Focus on market and value chain development which will include:



commercialization of animals and animal products;



developing market infrastructure



introducing digital innovations and platforms;



linking smallholder farmers to markets, e.g. through collective action;



improving processing and value addition of animal products,



and cold chain development.

Targeted opportunities for supplying local, regional and international markets will also be identified.



PILLAR 3

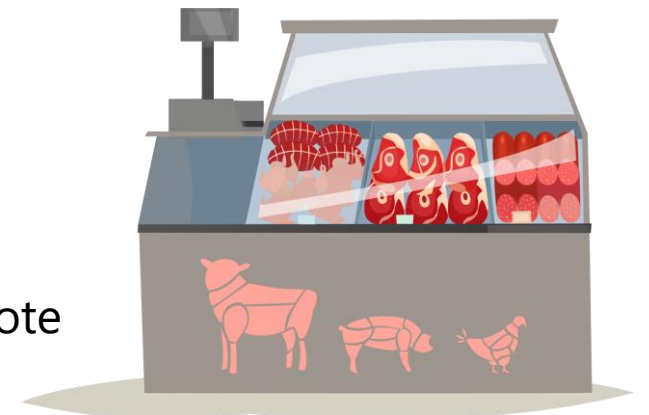
Promoting sustainable food security and nutrition through animal source foods

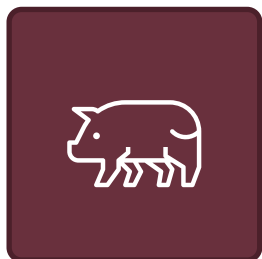
Increasing productivity will help reduce consumer prices of animal source foods to make them affordable. Value addition, such as milk processing, will ensure availability all year round, stabilize prices for continuous supply, increase shelf life, and reduce losses.

Higher income from increased profitability of livestock, will result in higher disposable incomes which are associated with increased dietary diversity and increased consumption of animal source food.

Focus on promoting sustainable, safe and healthy diets, food security and nutrition through animal source foods, ensuring that investments are nutrition sensitive.

Promote consumer awareness among the population sectors that would most benefit from consuming more animal sourced foods and promote access for them.





PILLAR 4

One Health

Increasing intensification of the livestock sector could potentially also carry risks to both animal and human health through food safety, zoonotic diseases and antimicrobial resistance

This pillar will adopt a holistic 'One Health' approach to these challenges, bringing together animal, human and environmental health

Encourage coordination and collaboration among, for example ministries of agriculture or livestock, health and the environment

Supporting effective disease surveillance systems, improving diagnostic capacity and general knowledge about zoonotic diseases

Support food safety in animal source food value chains

Increased awareness of the problem of anti-microbial resistance, increase laboratory testing capacity and incentives for more rational use of antimicrobials and the promotion of alternatives such as improved management and biosecurity.





CROSS-CUTTING THEME 1:

Policy support to transform the livestock sector



The LIVEMAP will support RMCs to create an inclusive and enabling environment for business-led change by creating evidence-based policies to stimulate both Bank and private sector investments, while safeguarding the interests of the most vulnerable

National Livestock Master Plans: an effective, data-backed advocacy and planning tool for engaging with policymakers, private investors and development partners.



CROSS-CUTTING THEME 2:

Gender equality, youth and social inclusion



The LIVEMAP will drive the development of inclusive livestock value chains and business models in order to ensure that men, women and youth benefit equitably from productive and profitable value chains.

Partnerships

The AfDB regional member countries will be the owners of the transformation agenda.

Both public and private actors across livestock value chains will play different roles, to mention a few.



The public sector, including national and local governments, will play policy, regulatory and enforcement roles.



NARS and regional and international research institutions / CGIAR will provide evidence-based solutions



The private sector including producers, service providers, processors and marketing experts will play a leading role in scaling up innovations



Civil society and stakeholder organizations will contribute to scaling, and also inform future demand



Banks and financial institutions who provide the credit required by value chain actors

Investment identification & resourcing

The Bank will proactively approach regional member countries that demonstrate a 'readiness to transform' and a large 'scale of transformation opportunity'

Current sources of finance for agricultural development are primarily from four areas:



funds from the Bank's sovereign and non-sovereign investments into agriculture;



other multi-lateral and bilateral donors;



public sector spending;



commercial lending and private sector investments into agriculture

There are sufficient resources within Africa and key potential partners for the Bank to meet the funding gap.

Acknowledgements

As Chair of the TWG, would like to thank the AfDB for initiating this process and setting up the TWG, and specifically the support, collaboration and contributions of:

Andrew Mude
Yousouf Kabore
Martin Fregene

I also thank the TWG members and their organizations:

Scott Newman, FAO
Karim Tounkara, OIE
James Wabacha, AU-IBAR
Wim Marivoet, IFPRI
Jemimah Njuki, IFPRI
Dereje Wakjira, IGAD/ICPALD

