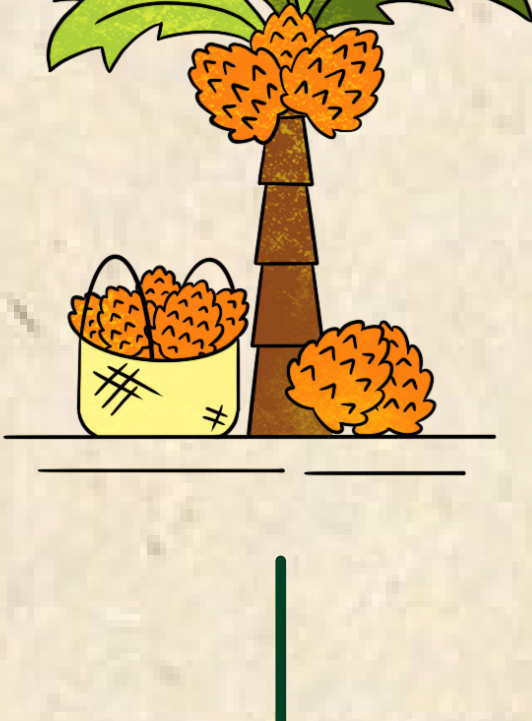


What is palm oil and its derivatives that contribute to

# ZERO DEFORESTATION

Low **Greenhouse Gas (GHG) Emissions** ?



It is the result of the management of palm oil carried out by the Central Committee of Palm Growers of Ucayali (COCEPU) whose fundamental principle is the conservation of forests and the recovery of soils degraded by the cultivation of the coca crop, livestock, and others. The palm oil tree is a permanent crop that over time allows to generate new agroecosystems, improves soils, leaves areas for forest conservation and at the same time generates a product of high economic value. It is an alternative for the development of the Amazon that is socially equal, economically viable and environmentally sustainable.

Why are we **ZERO DEFORESTATION**

and low in GHG emissions?

1

We avoid the negative impact on conservation areas

2

We comply with laws and regulations that specifically regulate the issues of forest conservation, land use and GHG mitigation

4

We contribute to the restoration of degraded ecosystems

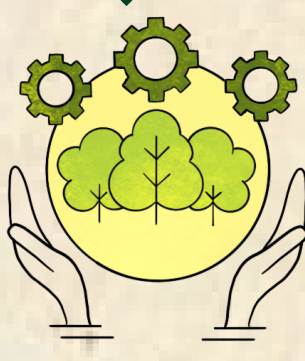
3

We implement a circular economy system that allows us to extract and use our renewable resources efficiently

## Activities of our Business Model



### GOVERNANCE



Incorporation of the zero deforestation and reduction of GHG emissions approach in the internal management of the organization



Evaluation of carbon credit opportunities in palm plantations and their industrial processes

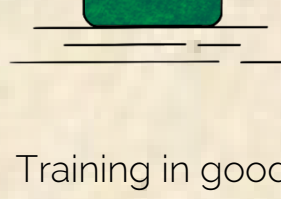


Awareness-raising activities on forest conservation with partner producers



### PRODUCTION

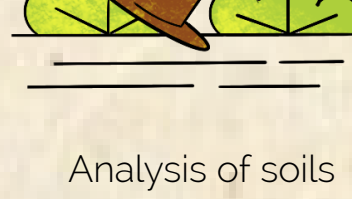
Increased productivity through good agricultural practices low in GHG to avoid the need to extend the agricultural frontier



Training in good agricultural practices



Sustainable land management



Analysis of soils and foliars



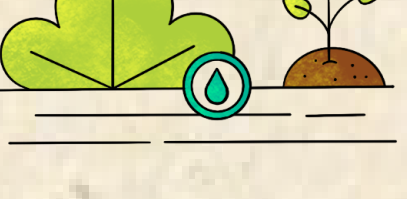
Fertilization plan with GHG mitigation approach



Systematic and regular pruning



Integrated pest and disease management



Establishment of vegetable covers



Management of crop residues



Renovation of palm plantations



### MONITORING, REPORTING AND VERIFICATION (MRV)



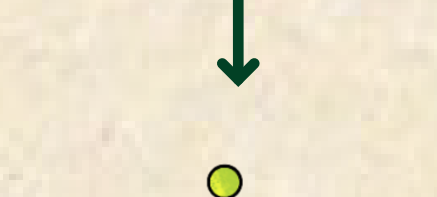
System of environmental, economic and social indicators



GHG emissions due to change of coverage and implementation of agricultural practices with a mitigation approach



Change of forest cover in the area of influence

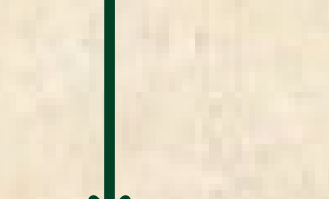


Socio-economic well-being of producers

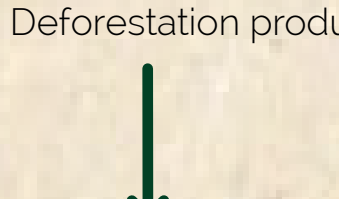


### MARKET

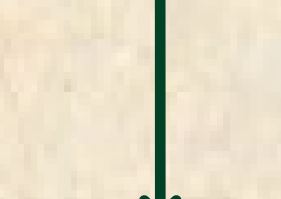
Access to differentiated markets that recognize the added value of a Zero Deforestation product



Market research



Approach to identified buyers

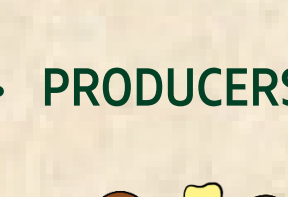


Obtaining RSPO certification

## BENEFITS OF THE

Zero Deforestation and Low GHG Emissions Model for:

### PRODUCERS



Improve the quality of life and support in the forest conservation

### EXTRACTOR COMPANY



To be recognized as a leader in compliance with national and international environmental standards

### COOPERATORS



Facilitate access to international green funds

### INVESTORS / FINANCIAL INSTITUTIONS



Comply with the environmental commitments assumed



Improve accountability reporting



Plan a better placement of resources for future projects



Reduce transaction costs and risks

### BUYERS



Creates and strengthens the relationship with customers and consumers to avoid reputational damage



Optimizes the management of climate risks