




INITIATIVE ON
Gender Equality

A photograph of two women in a rice field. The woman in the foreground is wearing a green and blue patterned sleeveless top and a green headwrap, holding a sickle and cutting rice. The woman in the background is wearing a pink top. The field is filled with green rice plants and golden rice stalks under a blue sky with white clouds.

First High-level Dialogue on Gender and Climate Change in Africa

Fri 7 Oct 2022
9.30am–12.30pm EAT



INITIATIVE ON
Gender Equality

HER+

Harnessing Gender and Social Equality for Resilience in Agrifood Systems

Nicoline de Haan (ILRI)

Dan Gilligan (IFPRI)

Steve Cole (IITA)

Ranjitha Puskur (IRRI)

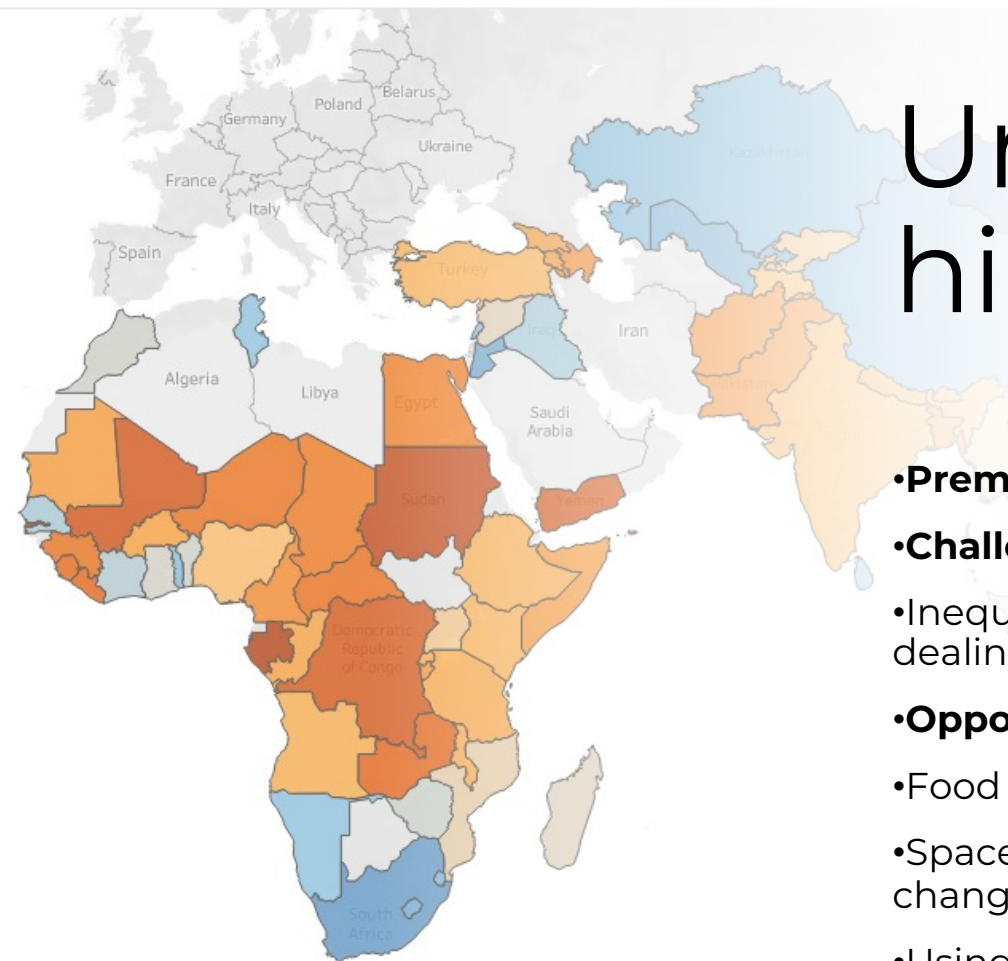
Shalini Roy (IFPRI)

Katrina Kosec (IFPRI)

HER+: Dealing with Global Challenges



Gender inequalities remain deeply entrenched, limiting the potential of women—especially those from agriculture-dependent communities—to be empowered and to build social, economic and technological **resilience**



Nigeria, Tanzania, Ethiopia, India,
Kenya, Mali, Bangladesh, Malawi, Egypt

Urgency and high stakes

- Premise of HER+:**

- Challenge:**

- Inequities will get worse in countries dealing with climate change

- Opportunities:**

- Food system are transforming

- Space opening for solutions on climate change

- Using hotspot mapping and partners in country to target where inequities growing fastest

- Conclusion:**

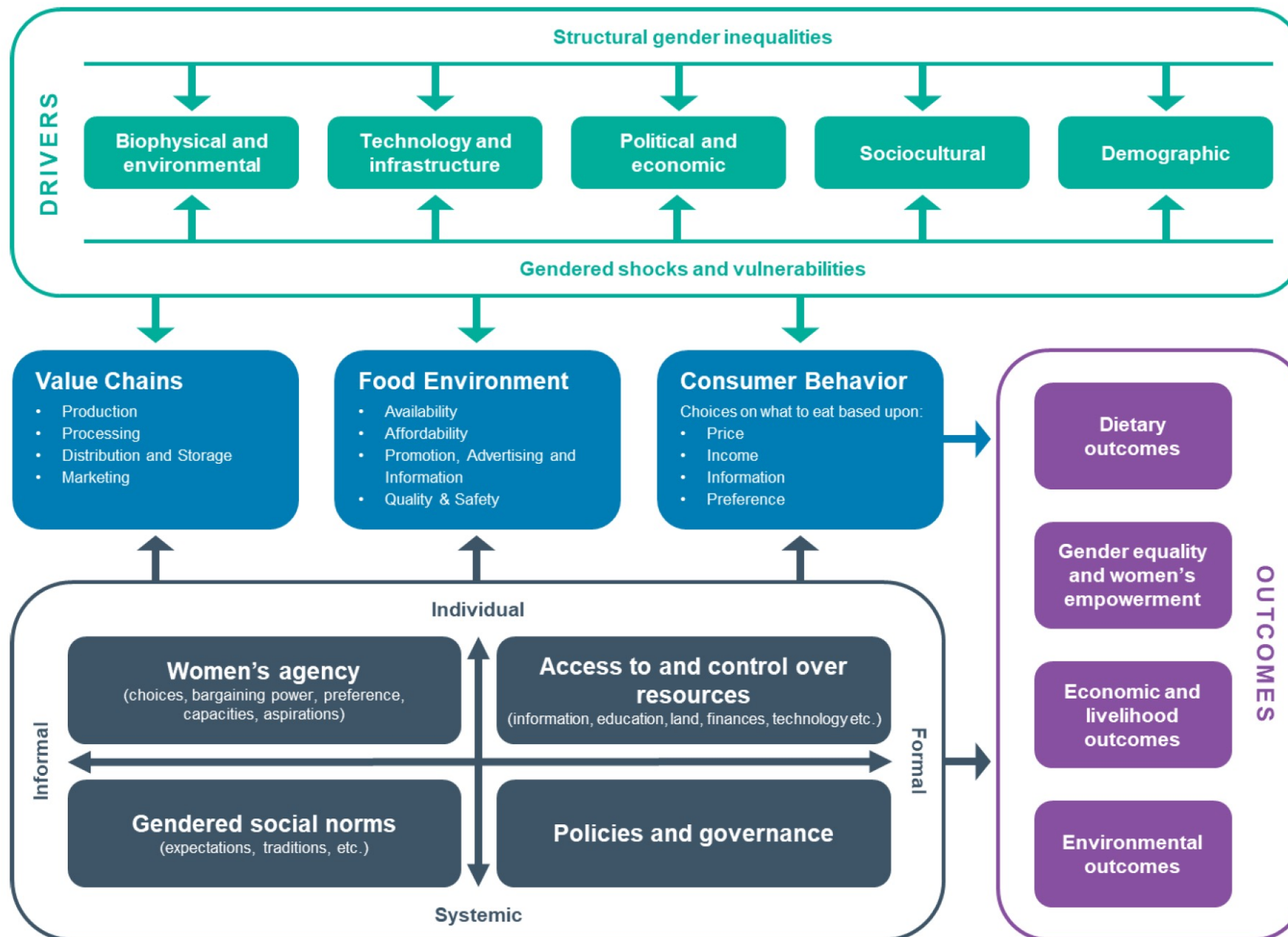
- Reverse and Stop inequities growing

HER+ framing

HER+ Initiative **tackles** the four main dimensions of gender inequality in agri-food systems to build climate change resilience through research on:

- women's agency or limited ability to define and act on goals, make decisions that matter to them, and participate in the economy and public life
- women's lack of access to and control over resources
- social norms that discriminate based on gender
- policies and governance that fail to include and benefit women.

Figure 1. Gendered Food Systems



Adapted from Njuki et al 2021

HER+ Objective: from resilience to empowerment



INITIATIVE ON
Gender Equality

Gendered shocks and vulnerabilities

Conflict

Climate

Pandemic

HER+: EMPOWER: Understanding how to bundle socio technical innovations to empower women as partners and drivers of CC solutions

EMPOWERMENT

GOVERNANCE

HER+: PROTECT: Gender-responsive social protection to promote for climate adaptation and resilience and equality

HER+: TRANSFORM: Reducing normative constraints that limit women's economic resilience to CC challenges

PROTECTION

TRANSFORMATION

HER+: VOICE: Promoting Inclusive Governance and Policies for Women's Resilience to CC

Systemic

Harmful norms

Restrictive masculinities

Unequal responsibilities

Structural gender inequalities

FOOD SYSTEMS DRIVERS

Adapted from Njuki et al 2021

What will success look like

- 1) When we can pinpoint solutions that build resilience to empowerment
- 2) When we understand working along the axes better – from individual to system, from informal systems to informal systems
- 3) When we understand how the four interact
- 4) What part do we need to tweak/pivot to unlock the answer
- 5) With the right partners

To do this we need to be challenged along the way –
CONTINUED DIALOGUES

Urgency and high stakes

HER+ : research to stop and reverse growing inequalities for the future generation





INITIATIVE ON
Gender Equality

HER+ Work Package 1

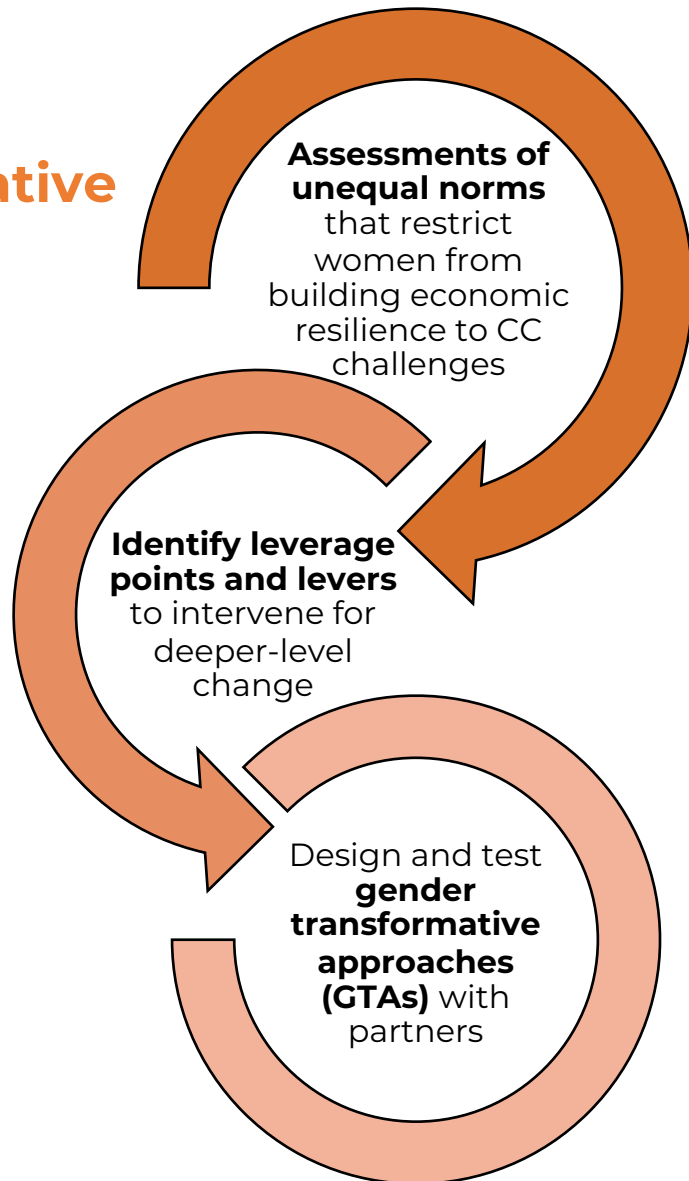
TRANSFORM: Gender transformative approaches

Presented by: Steven Cole, International Institute of Tropical Agriculture

TRANSFORM:

Gender transformative approaches

The innovative research



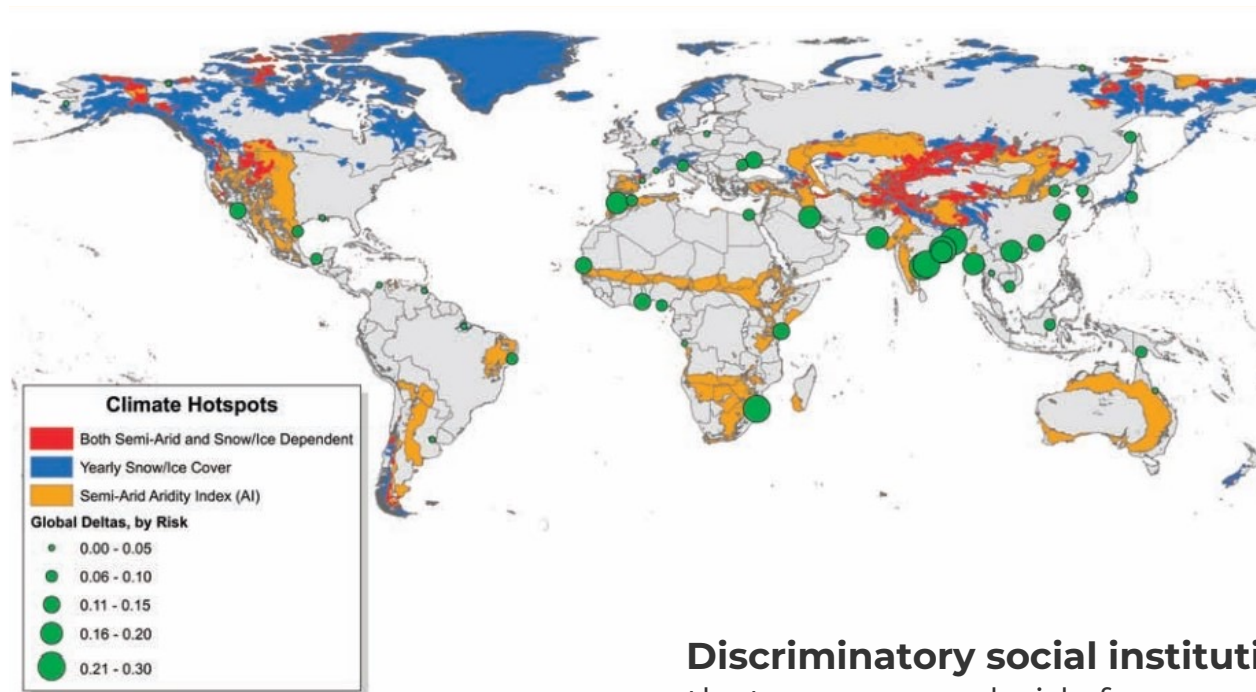
The value proposition

- ➔ **GTAs are regarded as ways to intervene in food systems at a deeper level** by targeting normative constraints and building critical consciousness
- ➔ **A lack of guidance on:**
 - Where and how to intervene
 - Specific GTA designs, methods and tools to spark transformative change at scale
- ➔ With more food system actors targeting inequitable norms using GTAs, **women's capacities to build economic resilience will increase**

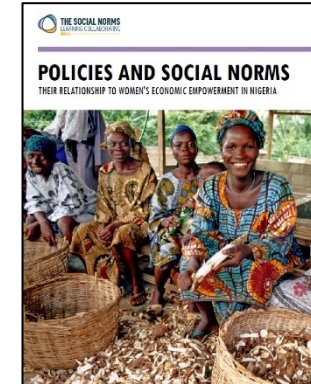
TRANSFORM:

Gender transformative approaches

In Nigeria, “**patriarchal systems of gender inequality** result in gender roles which constrain women’s ability to engage fully in the economy; inability to move freely through the community, [and] women’s lack of autonomy to make decisions for themselves and their families” (Abdul-Isma’il et al., 2021).



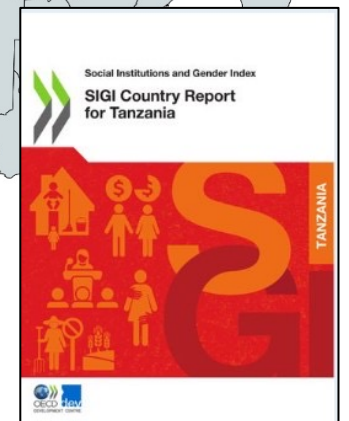
Source: [Szabo et al. \(2016\)](#)



Focal countries



Discriminatory social institutions “are at the root of the restrictions that women and girls face, and underpin unequal outcomes across all spheres of life including employment, entrepreneurship, health and education” (SIGI Country Report Tanzania, 2022).





INITIATIVE ON
Gender Equality

HER+ Work Package 2

***EMPOWER:* Bundled Socio-technical Innovations (STIBs) for Women's Resilience and Empowerment**

Lead: Ranjitha Puskur, IRRI

Co-lead: Eileen Nchanji, Alliance Bioversity-CIAT

EMPOWER:

Bundled Socio-technical Innovations (STIBs) for Women's Resilience and Empowerment



INITIATIVE ON
Gender Equality

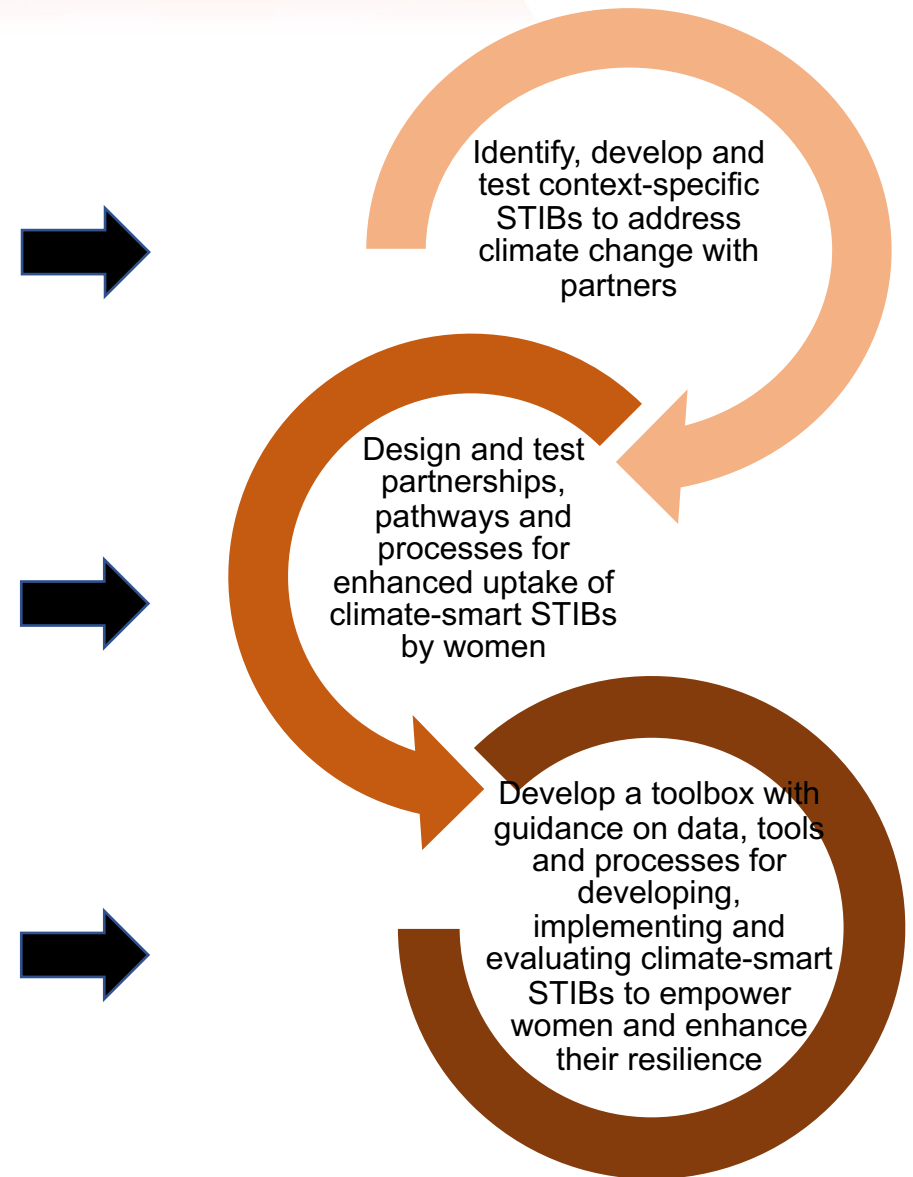
The value proposition

Significant number of technical innovations to address climate change in ag, land and water systems exist, but the uptake by women is low.

Recognition of the need for STIBs, but no systematic evidence or guidance:

- whether and how STIBs can enhance women's empowerment and resilience
- how to design and implement context-specific and climate-smart and gender-responsive STIBs

Builds on available and relevant CGIAR and non-CGIAR innovations to address climate change to enhance their uptake and impacts via enhancing women's access, resilience and empowerment



WP2 - End of Initiative Outcome



INITIATIVE ON
Gender Equality

Learning Labs nested in partner (e.g., World Veg, AGRA, IFAD, NARES) and CGIAR Initiatives design, test and scale bundled climate smart innovations to empower women to be partners and drivers of climate change solutions

HER+ WP2 - Locations and Learning Labs

Partner	Country	Project/Initiative
WorldVeg	Ethiopia India	Veggies for Planet and People (V4P&P) Assam Agri-business and Rural Transformation Project (APART)
CGIAR	Rift Valley, Kenya	Livestock, Climate and Systems Resilience (LCSR) Focus on Semi-intensifying dairy systems
International Fertiliser Development Corporation (IFDC)	India	Accelerating Farm Incomes Project
Indian Council of Ag Research – Indian Veterinary Research Institute (IVRI)	India	Tribal Sub-plan, Government of India



INITIATIVE ON
Gender Equality

HER+ Work Package 3: Gender-responsive social protection for climate resilience and equality (PROTECT)

Dan Gilligan
Nairobi, Kenya
October 7, 2022

Motivation for this work – example quotes from qualitative work in Ethiopia (Devonald et al. 2022)

“When there is no rain on the farm, everything would be ruined. At that time we would face food shortages in the household. We would have nothing to eat when the crops are destroyed in the field.”

-- 16-year-old girl from East Hararghe

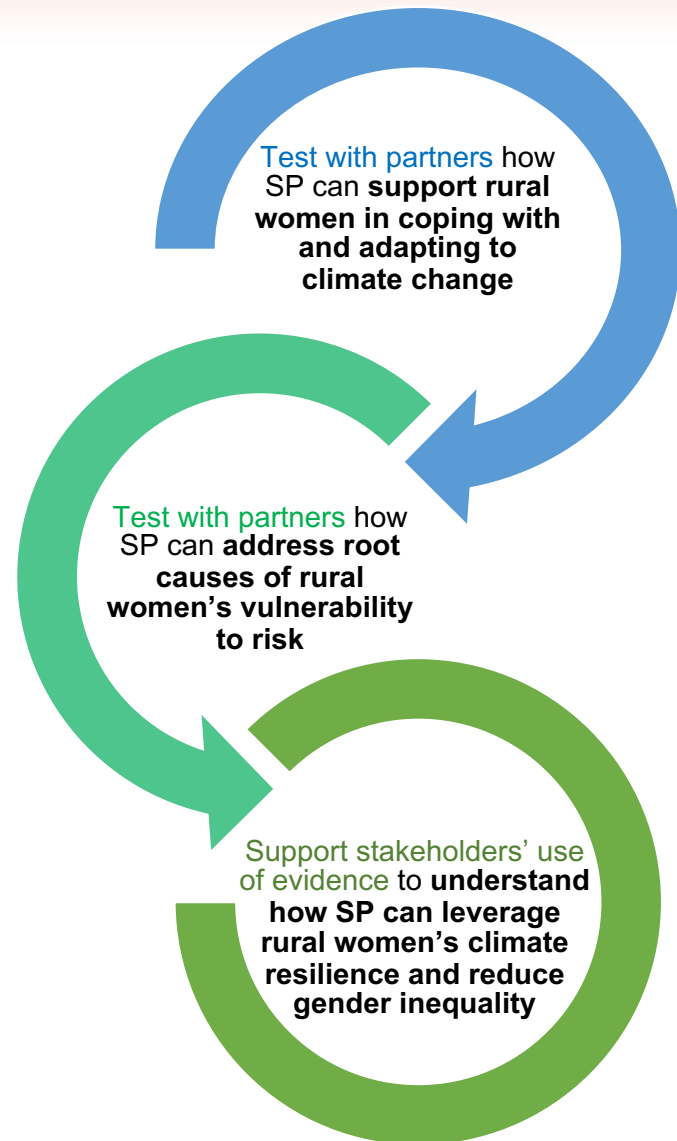
“It [drought] has been occurring intermittently... In recent years, we have been relying on food assistance [from the Productive Safety Net Programme] as we often experience food shortage.”

-- Woman from South Gondar



Photo credit: Michael Mulford

PROTECT: Gender-responsive social protection for climate resilience and equality



- ➔ **Social protection programs (including cash transfers, food transfers, public works) reach large numbers of resource-poor rural women globally** and have vast potential to support women's climate resilience – providing resources for coping, adaptation, reduced vulnerability
- ➔ **Growing stakeholder interest, but lack of guidance** around specific SP program design features that promote women's climate resilience in different contexts
- ➔ **Better evidence on and stakeholder understanding of SP's optimal design to build women's climate resilience will reduce gender inequality** in diets, nutrition, livelihoods, empowerment, etc.
- ➔ **Work Package 3 takes stock of what we know and generates new evidence with partners in Ethiopia, Mali, and Bangladesh on how to leverage SP for rural women's climate resilience**

HER+ social protection research in Ethiopia in collaboration with World Vision's SPIR project



INITIATIVE ON
Gender Equality

Q1: Do gender-transformative livelihood and nutrition components added to PSNP further protect food security and assets of rural women and their households during droughts?

- Quantitative analysis of secondary data on PSNP, experimental livelihood and nutrition components, and climate shocks
- Qualitative analysis of focus group discussions with women

Q2: What strategies within PSNP's public works program can increase women's take-up and benefits from sustainable land management activities?

- Mixed-methods impact evaluation of a 1-year pilot program

Q3: Can adding men's engagement groups to PSNP shift men's attitudes and behavior around their involvement in household chores and childcare?

- Quantitative analysis of secondary data on PSNP and experimental men's engagement component





INITIATIVE ON
Gender Equality

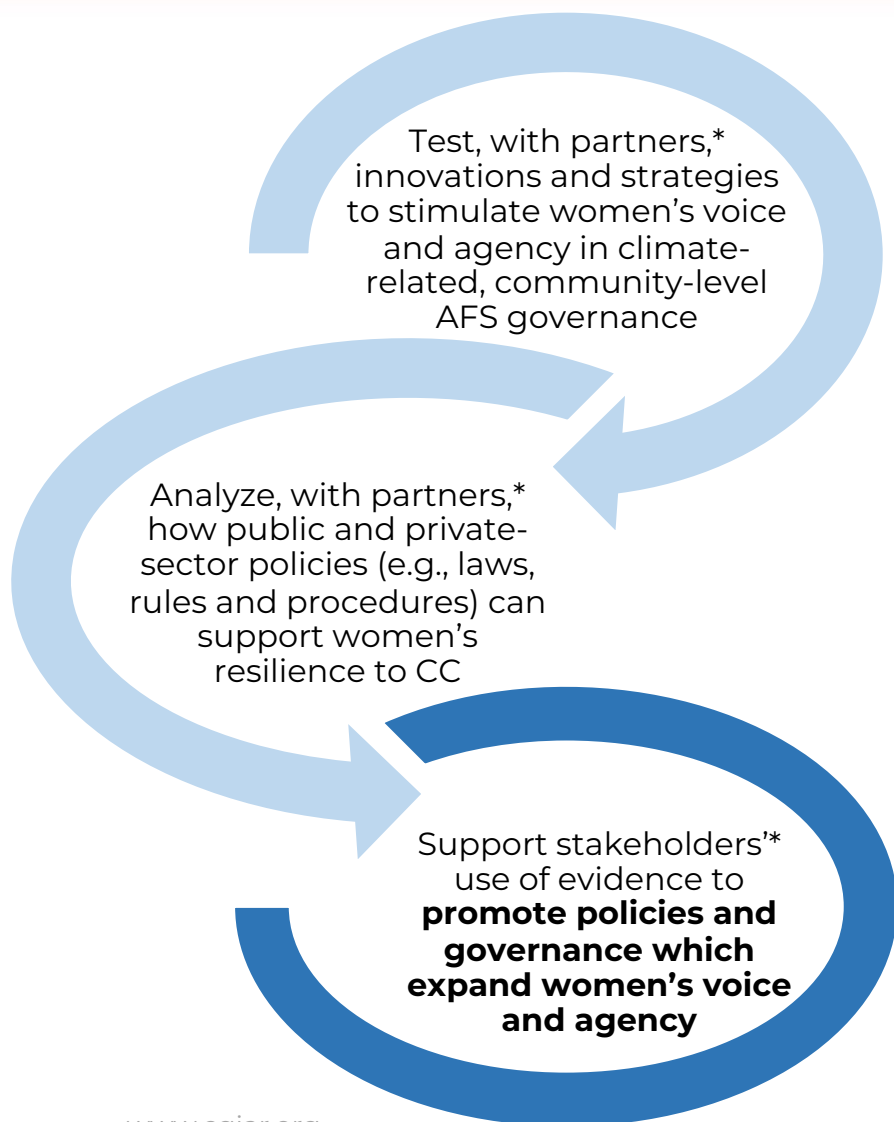
HER+ WP4: VOICE: Inclusive Governance and Policies

Lead: Katrina Kosec (IFPRI)

Deputy lead: Marlene Elias (ABC)

HER+ Regional Dialogue | October 7, 2022

Motivation and Value Proposition



➡ **Inclusive governance is critical;** If women are better represented, heard and accounted for in climate-related AFS governance, their voices will promote gender equality, poverty reduction, and resilience to climate change

➡ **There is growing stakeholder interest in (but lack of guidance on)** scalable innovations and policies to expand women's voice and agency in public spaces and promote their resilience to climate change

➡ **There is a rising need for (but inadequate existing development of) indicators and tools tracking women's voice and agency** beyond the household, and in AFS governance

* Across governments, INGOs, UN agencies, OneCG initiatives, research partners, donors (e.g., Government ministries (agriculture, local government) of Malawi/ Nigeria/ India; ISEAL; ActionAid Nigeria; Women for Women Nigeria; IPA; University of California – Berkeley, CARE, FES, UN, World Bank, FAO)

VOICE Research in Action – HER+ Focal Countries



- **Nigeria:** ActionAid Nigeria is collaborating with HER+ to test the effectiveness of trainings to build the collective efficacy and knowledge about how to influence policy of rural women's groups
- **Malawi:** Testing how the gender composition of groups deliberating about policies to stop deforestation influences women's power in group settings and decisions – and delivering evidence to government given its relevance to existing policies imposing quotas in natural resource decision-making bodies
- **India:** Assessing the effects of climate change on women's empowerment beyond the household; considering how to increase women's voice and agency over asset construction projects as part of the MGNREGA program

VOICE Research in Action – Global

- Three strategic evidence reviews:
 - Barriers to and ways to support women's voice and agency in governance
 - Public sector policies that enhance women's resilience to CC
 - Private sector policies that enhance women's resilience to CC
- Building a toolkit for measuring effective voice and agency of women in climate-related governance at the individual and group levels
- Building a Women's Empowerment in Agrifood System Governance Country Assessment Tool (WEAG-CAT) focused on diagnosis and self-assessment of women's voice at the community level
- Collaboration with ISEAL to identify opportunities to test the impacts of sustainability standards on women's empowerment beyond the household



INITIATIVE ON
Gender Equality