



GENDER Impact
Platform

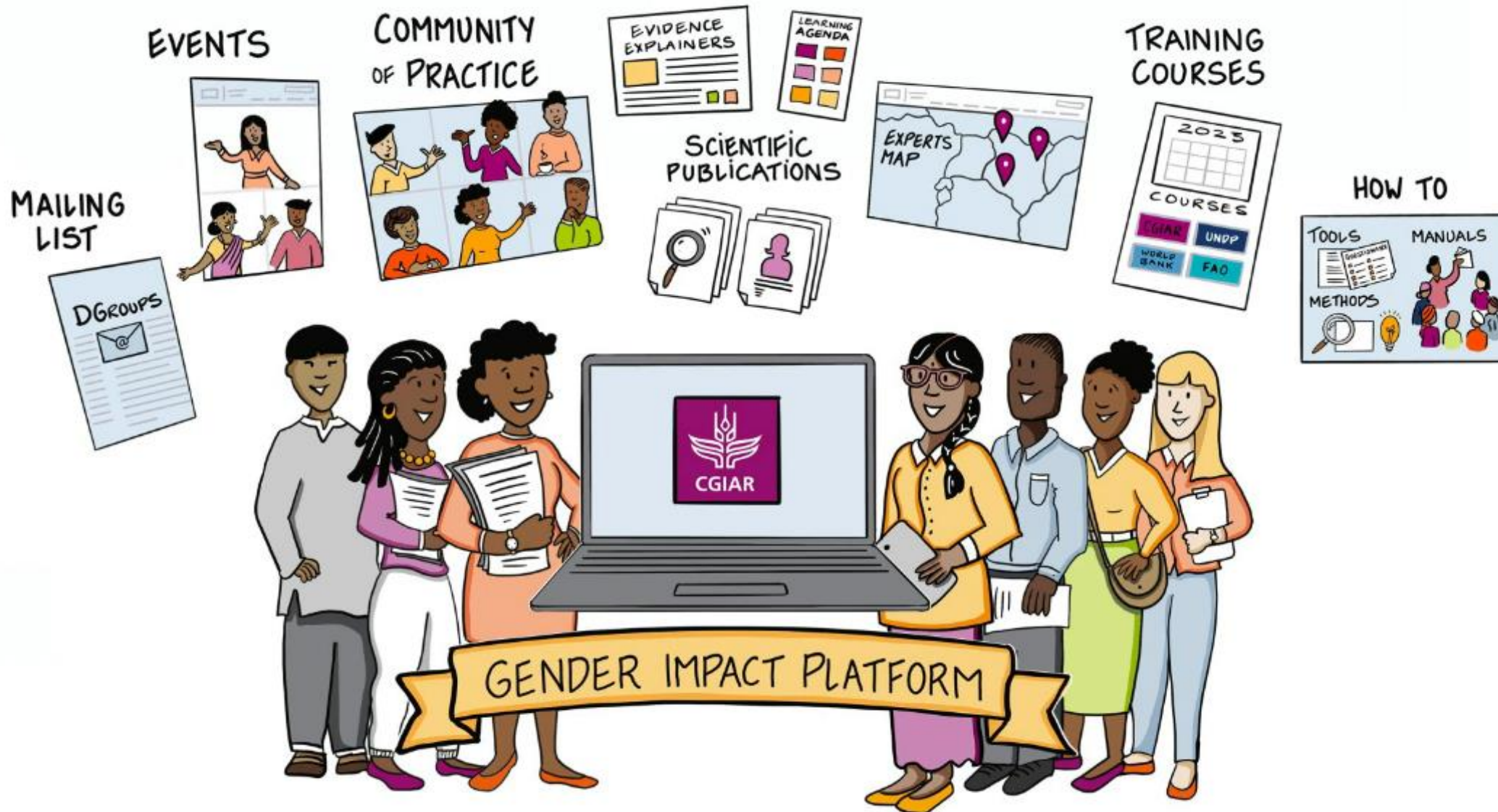
TH0.2: Introducing the GENDER Impact Platform research exchange system to strengthen capacities among researchers and partners

Els Lecoutere

The research exchange system



GENDER Impact
Platform



A reliable, living research exchange system

- On the resource hub
 - Publications and data harvested via [GARDIAN](#) (since 2006 with 'gender' tag)
 - Other resources reviewed and curated by Evidence, Methods and Alliance modules
 - GENDER Working papers: Peer review process
 - Engendering Data Blog
 - <https://gender.cgiar.org/how-we-harvest-select-and-prioritize-resources>
- Exchange through webinars, workshops, Townhall, the CGIAR gender researchers' network and CoP: 'Peer to peer'
- Review and selection process for contributions to annual events like the conference and Science Exchange
- Bi-monthly newsletter sourced from recent research in CG centers and Initiatives
- Dgroups : Post your events, new publications, job opportunities,... anything you think is relevant for this large group of gender researchers within CGIAR and beyond

How can we further strengthen the research exchange system together?

How can you contribute? How can we help?

How will we strengthen the community and peer-to-peer exchange? And how will we keep it going?

How can we expand the youth and social inclusion content together?



GENDER Impact
Platform



gender.cgiar.org/research-support

1. Intro slide

- To fulfill one of the key roles of the gender impact platform of strengthening capacity among researchers and partners across action areas and science groups. The platform offers a research exchange system.
- The research exchange system is a way to facilitate, support and exchange methods, tools, standards, data, evidence, knowledge and science for impactful gender research within CGIAR and beyond
- this is how the research exchange system looks like and how it can be used:
- **show video**

2. Slide 2: picture video

as you saw in the video, the research exchange system is made up of

- An online resource hub
- The networks of gender researchers within CGIAR
- Webinars, workshops, online and in-person training courses
- Cop
- Exchange events like the townhalls and the annual events like science exchange

the research exchange system is a system that facilitates exchange and brings together resources developed by CG researchers other relevant and reliable resources and, as such, offers a wealth of evidence, methods, tools, knowledge, networks

- **Slide 3 A reliable, living research exchange system**
- <https://gender.cgiar.org/how-we-harvest-select-and-prioritize-resources>
- On the online resource hub
 - Publications and data harvested via [GARDIAN](#) (the Global Agricultural Research Data Innovation Acceleration Network)(since 2006 with 'gender' tag)
 - Other resources reviewed and curated by the Evidence (evidence explainer), Methods (methods and tools) and Alliance modules (training courses)
 - GENDER Working papers and Engendering Data Blog: Peer review process
- Exchange through webinars, workshops, townhall, and the network of CGIAR gender researchers; as well as Communities of Practice: 'Peer review'
- Contributions to annual events like the conference and Science Exchange: Review and selection process
- Bi-monthly newsletter sourced from recent research output in CG centers and Initiatives
- Dgroups for sharing knowledge and information: Post your events, new publications, job opportunities,... anything you think is relevant for this large group of gender researchers within CGIAR and beyond
- Some of its beauties: Built by you, 'organically' growing, also includes latest research hot of the press , (resource hub) searchable in different ways enabling targeted searches, exchanging in different ways and across centers, initiatives and with partners

Resources in the resource hub: Process and quality control

We can discuss more next week – also when we know what will be the actual outline of that opening session on Day 2? – but I just wanted to send you some quick background on sourcing content for the resource hub. Basically content is curated via different sources with QA at the module or center level – some kind of principle of subsidiarity.

Evidence explainers, methods and tools, and training courses are curated by the modules (Evidence, Methods and Alliances) – see more here: <https://gender.cgiar.org/how-we-harvest-select-and-prioritize-resources>

Publications are curated from permanent document repositories – see more in the same location: <https://gender.cgiar.org/how-we-harvest-select-and-prioritize-resources>

News on gender equality, youth and social inclusion are sourced from centers, initiatives and partners on a bi-monthly basis through the contributions for the GENDER newsletter.

How to further strengthen the research exchange system?

One-stop shop

- Feedback, including from non-CGIAR, that the resource hub is consulted and referred to for gender research in agri-food systems
- Frame and promote the resource hub **and all other resources** as a one-stop shop/support system
- Resource hub with new search and filter functionalities is a key feature <https://gender.cgiar.org/tools-methods-manuals> **update link**

How to extend the support system for the role of Impact platform?

- Encourage and facilitate impactful research in agriculture and food systems for gender equality, youth and social inclusion
- Slightly different target group; Targeted support components?
- Expand the youth and social inclusion content

What to strengthen or further develop?

- Strike a balance between comprehensive 'system' and focusing on our comparative advantages
- Keep the resource hub/support system up-to-date and expanding in an efficient manner
- Strengthen the community and peer to peer support and keep it going (without overburdening (volunteering) gender researchers)
- Strengthen reach to non-gender researchers, Initiative researchers/M&E (track impact area), research managers