

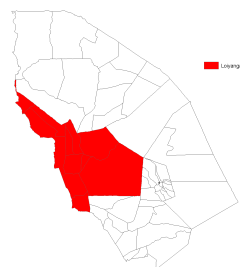
Index in Loiyangalani

Data up to 18 Feb 2012 - 4 Mar 2012

This page provides the update on the predicted livestock mortality index and the summary of the underlying data in Loiyangalani for October 2011 - February 2012 (Short Rain Short Dry, SRSD) insurance coverage period based on the data up to 18 Feb 2012 - 4 Mar 2012. For information on the definition of these variables, see <http://hdl.handle.net/10568/3408>.

Table 1. Summary

Index Area	Loiyangalani
Year	2012
Season	SRSD
Date of the most recent data	18 Feb 2012 - 4 Mar 2012
Predicted Livestock Mortality	0.12
Czndvi_pre	-15.38
Czndvi_pos	-0.97
CNzndvi	1.31
CPzndvi	13.90



Loiyangalani

For the details on index color, click [here](#).

Figure 1. ZNDVI in Loiyangalani from October 2010 to September 2011

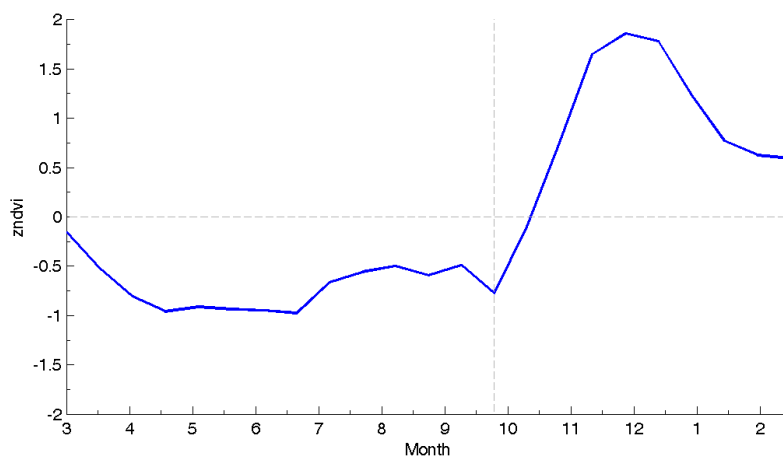


Figure 2. Czndvi in Loiyangalani from October 2010 to September 2011

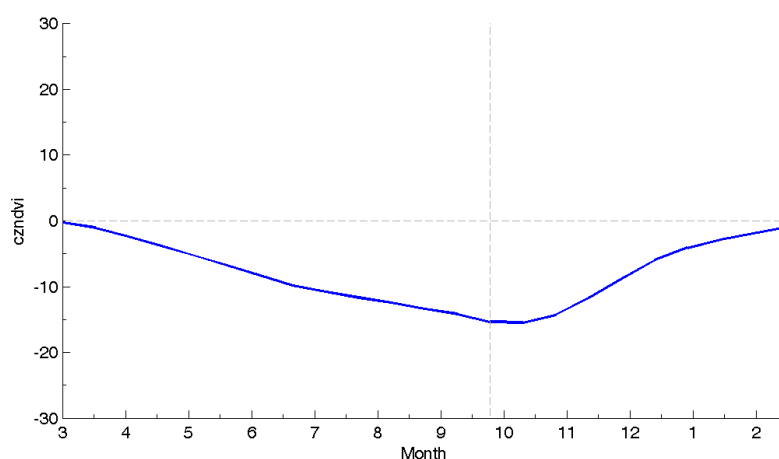


Table 2. zndvi

year	month	16-day	date	zndvi
2011	3	5	6-21 Mar 2011	-0.15
2011	3	6	22 Mar 2011 - 6 Apr 2011	-0.52
2011	4	7	7-22 Apr 2011	-0.81
2011	4	8	23 Apr 2011 - 8 May 2011	-0.96
2011	5	9	9-24 May 2011	-0.91
2011	5	10	25 May 2011 - 9 Jun 2011	-0.94
2011	6	11	10-25 Jun 2011	-0.95
2011	6	12	26 Jun 2011 - 11 Jul 2011	-0.98
2011	7	13	12-27 Jul 2011	-0.67
2011	7	14	28 Jul 2011 - 12 Aug 2011	-0.56
2011	8	15	13-28 Aug 2011	-0.50
2011	8	16	29 Aug 2011 - 13 Sep 2011	-0.59
2011	9	17	14-29 Sep 2011	-0.49
2011	9	18	30 Sep 2011 - 15 Oct 2011	-0.77
2011	10	19	16-31 Oct 2011	-0.10
2011	11	20	1-16 Nov 2011	0.75
2011	11	21	17 Nov 2011 - 2 Dec 2011	1.65
2011	12	22	3-18 Dec 2011	1.86
2011	12	23	19-31 Dec 2011	1.78
2012	1	1	1-16 Jan 2012	1.23
2012	1	2	17 Jan 2012 - 1 Feb 2012	0.77
2012	2	3	2-17 Feb 2012	0.63
2012	2	4	18 Feb 2012 - 4 Mar 2012	0.59

For more information on the IBLI project, visit <http://livestockinsurance.wordpress.com>.