

# PABRA

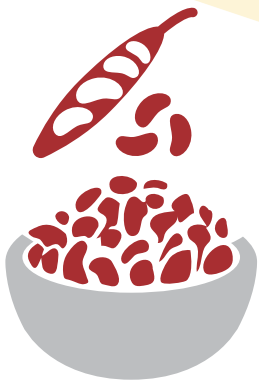
Pan - Africa Bean Research Alliance  
*Better Beans for Africa*



## THE PROMISE of BEANS

12 million metric tons of beans are produced per year

worldwide



400 million people eat beans as part of their regular diet

- ✓ Source of protein, iron, and zinc
- ✓ Consumable year-round: leaves, pods, fresh and dry beans

### East Africa

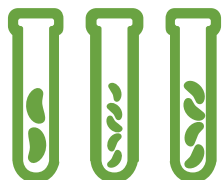
Highest per capita bean consumption



Bean sales exceed US\$500 million a year



Bean exports are worth US\$110 million a year



36,000+ bean accessions from over 110 countries safeguarded in the genebank at CIAT headquarters

# WHAT *is* PABRA



An alliance of 30\* National Agricultural Research Systems

350+ partners

Established in 1996

Coordinated by  **CIAT**  
International Center for Tropical Agriculture  
*Since 1967 Science to cultivate change*

Integrated bean research to enhance



food security



incomes



nutrition & health

of smallholder farmers and urban dwellers in Africa

\*List of member countries

- Angola
- Burkina Faso
- Burundi
- Botswana
- Cameroon
- Central African Republic
- Congo Brazzaville
- DR Congo
- Ethiopia
- Ghana
- Guinea
- Kenya
- Lesotho
- Madagascar
- Malawi
- Mali
- Mauritius
- Mozambique
- Rwanda
- Senegal
- Sierra Leone
- South Africa
- South Sudan
- Sudan
- Swaziland
- Tanzania
- Togo
- Uganda
- Zambia
- Zimbabwe

# PABRA's **IMPACT**

Over 550 new bean varieties released across Africa by PABRA members since 1996



Resistant to pests and diseases



Tolerant to drought



Increased yields



Aligned with market demand

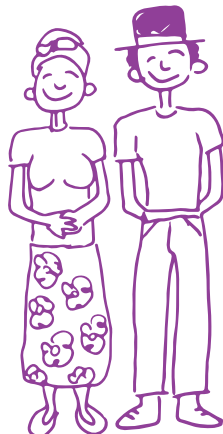


Improved nutrient content

US\$16 million of investment

generated

US\$200 million in benefits for more than 5.3 million rural households over 17 years



4,000 national research partners and 100+ postgraduates trained over 10 years with CIAT support



Sources: FAOSTAT and PABRA

