

Livestock advocacy and communications: Tanzania scene

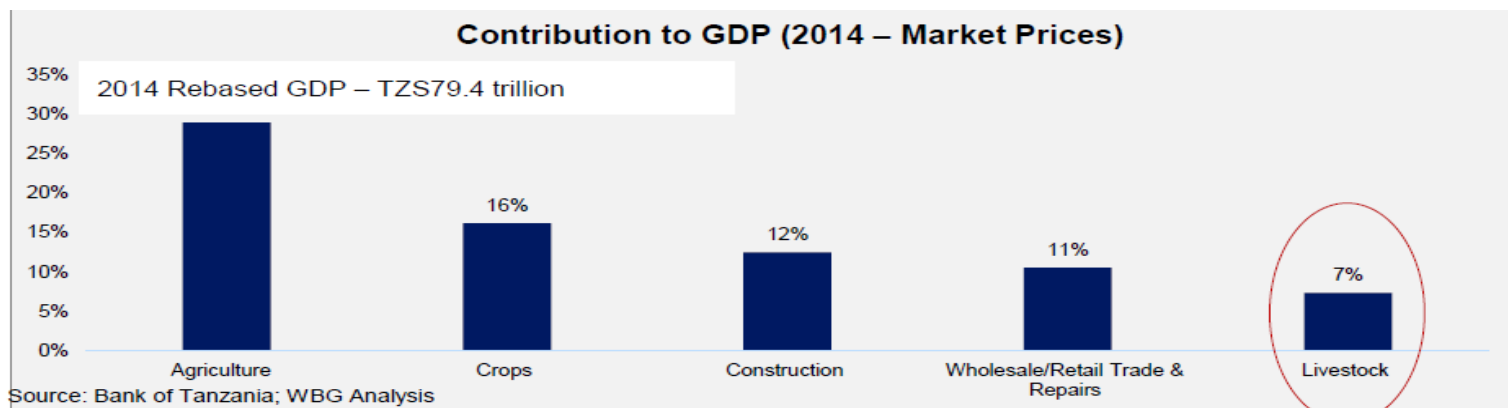
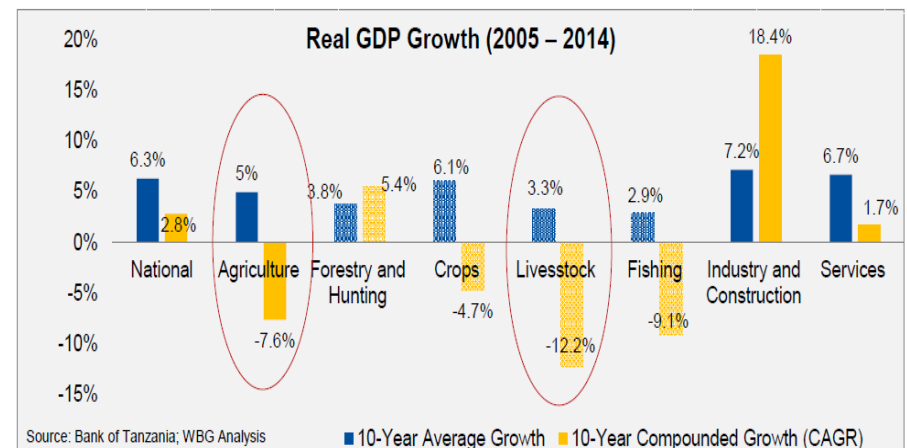
Amos Omore (ILRI) and Henry Njakoi (Heifer International)
Livestock Advocacy and Communications Convening
Addis Ababa, 10-12 Nov 2015

Livestock and development drivers

Trends and importance of the sector

- An important but underutilized resource:
 - Contributes 7% to GDP, ranking fourth after crops (12%)
 - Over 50% of rural hh earn income from livestock (22% of hh income)
 - Ownership: chickens (86%); cattle (35%); pigs (9%) others (10%)
 - Traditional breeds with low productivity dominate across species (98%)

Growth trend in the past ten years shows the livestock sector is underperforming



REALIZING 'TANZANIA VISION 2025' THROUGH LIVESTOCK

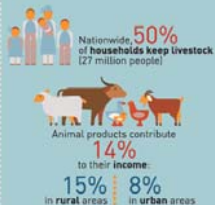
EVIDENCE FROM THE 2012/13 NATIONAL PANEL SURVEY



POLICIES AND INVESTMENTS IN LIVESTOCK ARE ESSENTIAL FOR "ACHIEVING A HIGH QUALITY LIVELIHOOD FOR PEOPLE ... AND DEVELOPING A STRONG AND COMPETITIVE ECONOMY"

"from low productivity ... to high productivity in agricultural production which generates high incomes and ensures food security and food self-sufficiency" www.nipango.go.tz

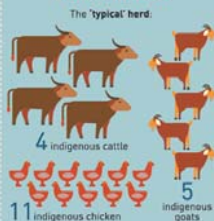
THE MAJORITY OF HOUSEHOLDS DEPEND ON LIVESTOCK FOR THEIR LIVELIHOODS



LIVESTOCK FARMERS ARE MOSTLY RURAL MANY ARE POOR



RURAL LIVESTOCK FARMERS HAVE FEW ANIMALS



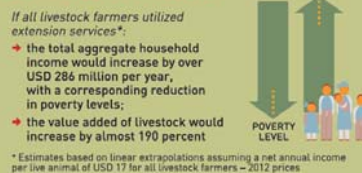
RURAL LIVESTOCK FARMERS USE BASIC HUSBANDRY PRACTICES AND MAKE LITTLE USE OF EXTENSION SERVICES



POLICIES AND INVESTMENTS THAT IMPROVE UTILIZATION OF LIVESTOCK EXTENSION SERVICES ENHANCE HOUSEHOLD LIVELIHOODS...



...AND CONTRIBUTE TO TANZANIA VISION 2025 ... TO "HIGH QUALITY LIVELIHOODS FOR PEOPLE"



In collaboration with:



Contacts:
ps@mifugouv.tz
dg@nbs.go.tz



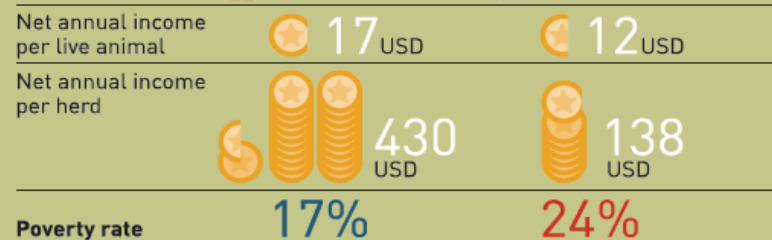
POLICIES AND INVESTMENTS THAT IMPROVE UTILIZATION OF LIVESTOCK EXTENSION SERVICES ENHANCE HOUSEHOLD LIVELIHOODS...



Rural livestock farmers that UTILIZE livestock extension services



Rural livestock farmers that DO NOT UTILIZE livestock extension services

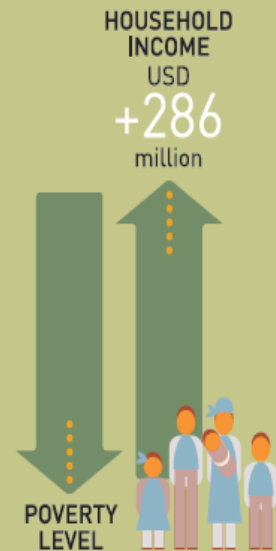


...AND CONTRIBUTE TO TANZANIA VISION 2025 ... TO "HIGH QUALITY LIVELIHOODS FOR PEOPLE"

If all livestock farmers utilized extension services*:

- the total aggregate household income would increase by over USD 286 million per year, with a corresponding reduction in poverty levels;
- the value added of livestock would increase by almost 190 percent

* Estimates based on linear extrapolations assuming a net annual income per live animal of USD 17 for all livestock farmers – 2012 prices



Improved access & use of inputs and services allows smaller more productive herds!

Policy opportunities and challenges for livestock development

Any important policy developments?

- Opportunities
 - Renewed interest by public investors; donors
 - TLMI
 - BMGF: EADD2; ACGG; ADGG; LMP; L-MIRA
 - MAZIWA ZAIDI/L&F
 - AMDT
 - IFAD
 - Others?
 - ASDP2
 - CG Site Integration (forth coming)
- Challenges
 - Weak private sector

Ongoing policy debates on livestock development

What issues are policy makers discussing?

- Land conflicts between pastoralist and sedentary crop farmers
- Rangeland conservation and management: establishment of village rangeland reserves
- Strategies for improving the quality and performance of existing herds and flocks:
 - sustainable breeds improvement (dairy, backyard poultry)
 - Branding campaign to drive quality beef production

Ongoing public conversations on livestock development

What issues are individuals and civil society discussing?

- ✓ *Inclusivity*
- ✓ *Gender*
- ✓ *Climate change*
- ✓ *Hubs*
- ✓ *Reforming extension*
- ✓ *Overtaxing regulations of the livestock sectors*
- ✓ *Conflicting policies*

Livestock (in development) advocacy and communications opportunities and challenges for livestock

What's currently being done to inform and engage and influence livestock development public and policy debates – initiatives, opportunities, gaps, challenges

- (TLMI) Tanzania Livestock Modernization Initiative
- (DDF) Dairy Development Forum
- Project platforms: Maziwa Zaidi, BMGF-funded projects, IFAD,

Main unanswered questions

- **Priority challenges:** feeds, productivity, genetics, diseases, uptake of techs
- **Priority opportunity:** Uptake of technologies
- How can policy be influenced so that
 - *dairy and (local) poultry sector investments are deployed to better target the poor and marginalized?*
 - *Pastoralist and agro-pastoralists co-exist with protected areas and game parks while sustainable using the natural resources*