

Climate smart cocoa value chains



RESEARCH PROGRAM ON
Climate Change,
Agriculture and
Food Security



Adapting the cocoa sector to climate change

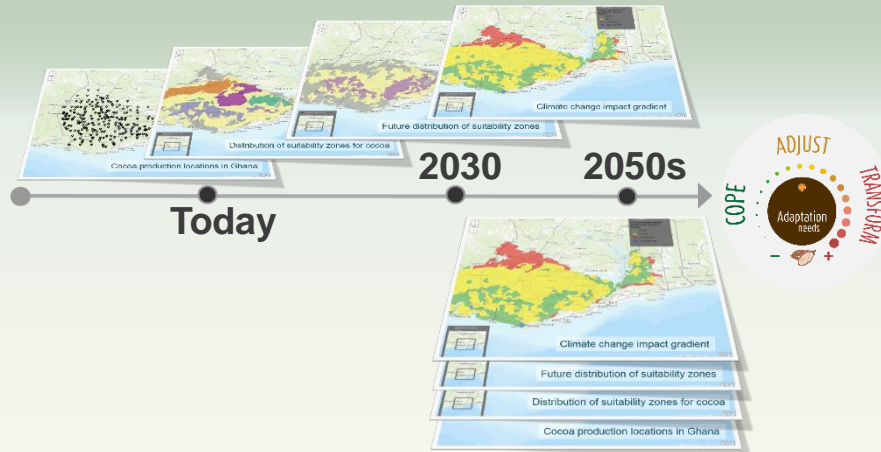


Climate change impacts



Mainstreaming Climate-Smart Cocoa

1 Map the **impact gradient** to understand the risk of climate change over time



2 Convene value chain actors along the exposure gradient



Areas that transition from one suitability type to another but remain suitable

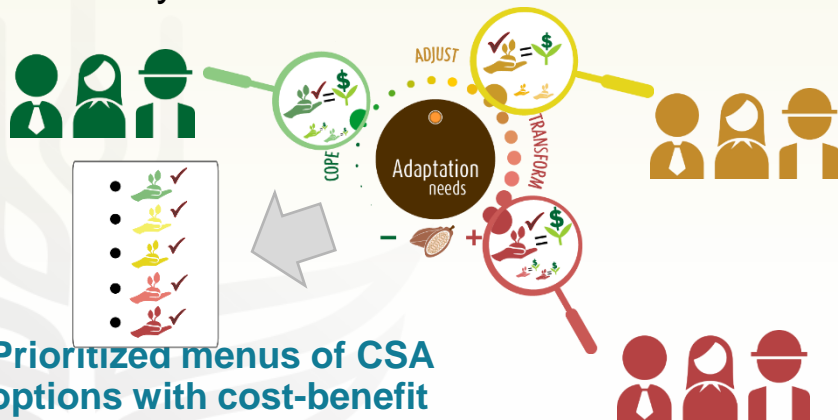


Locations where climate characteristics will not fundamentally change



Production in these zones will likely become unviable and other crops should be considered

3 Identify and prioritize **relevant CSA practices** by exposure gradient and analyze **costs and benefits**.

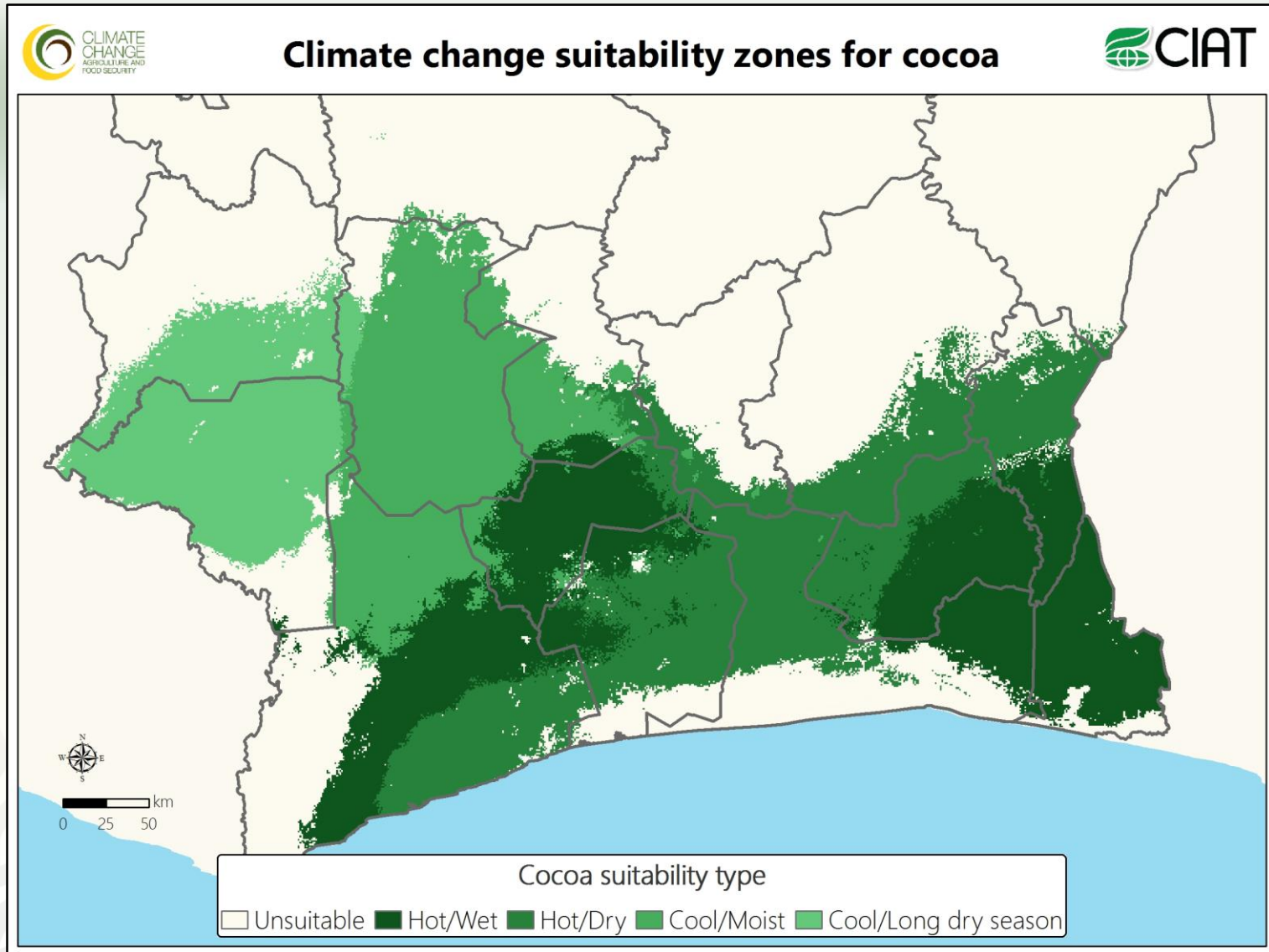


4 Construct exposure **specific portfolios** of priority CSA practices for **different investors**

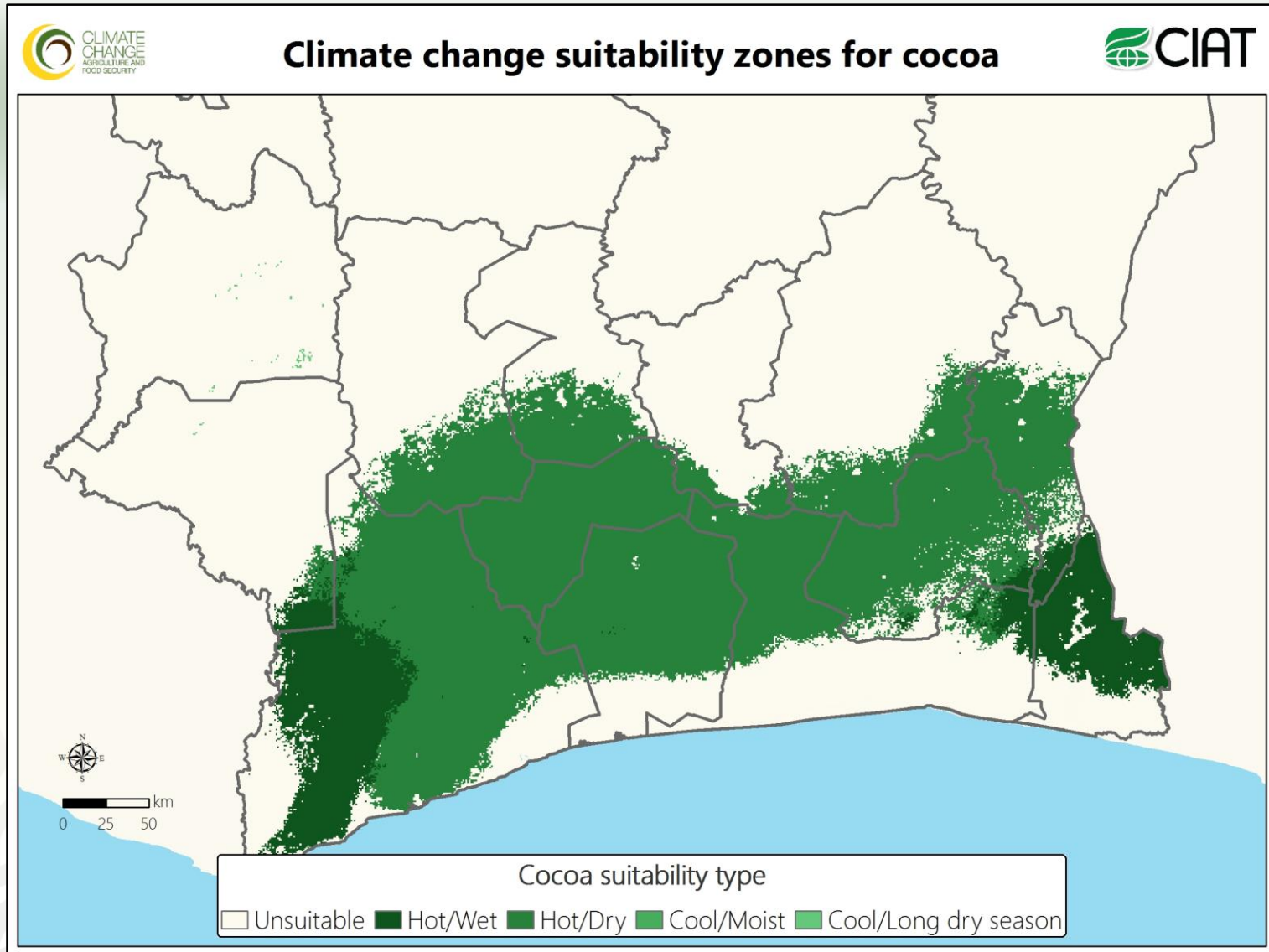


Tailored CSA investment plans

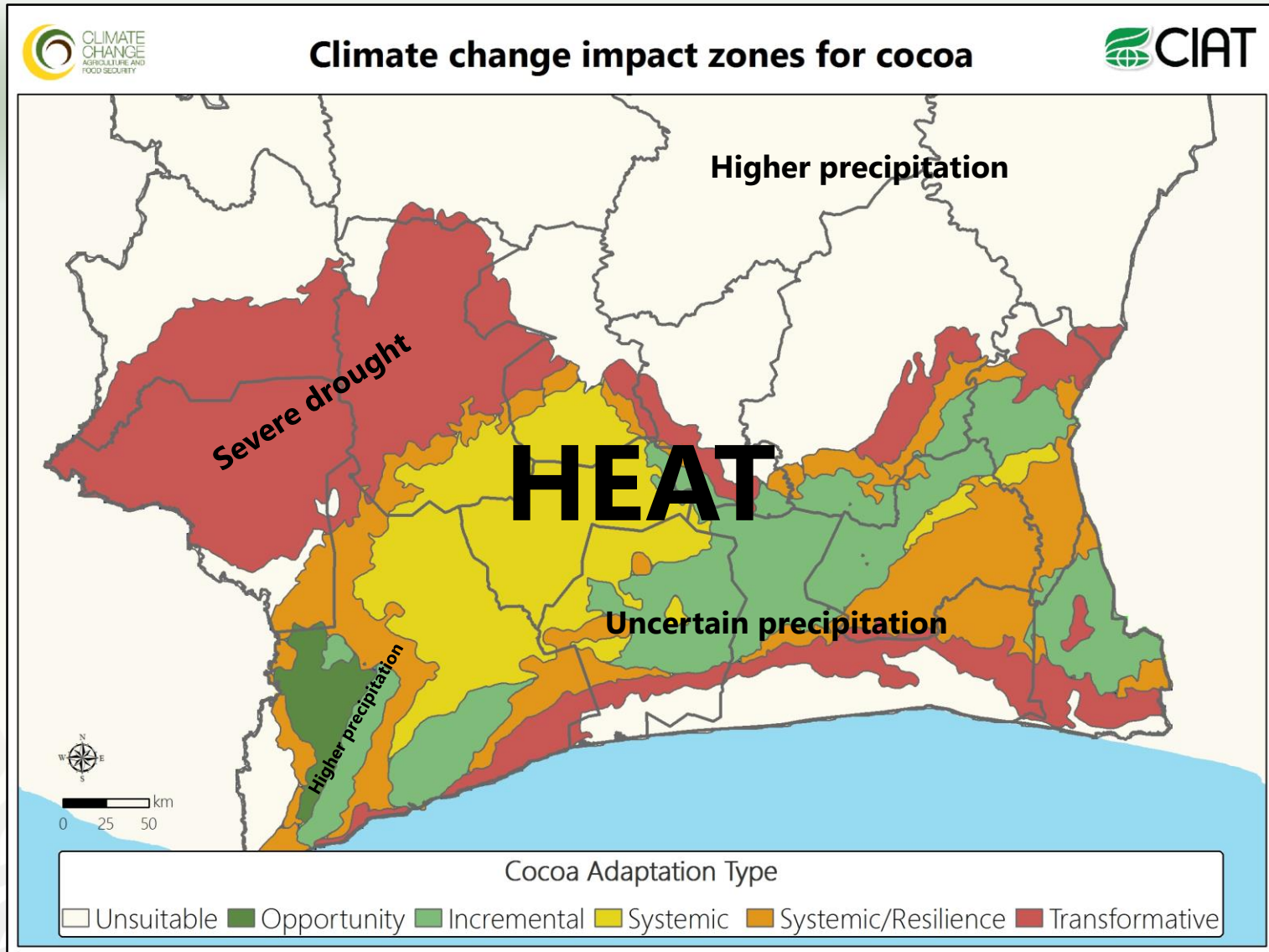
Impact zones in Ivory Coast



Impact zones in Ivory Coast



Impact zones in Ivory Coast



Thank you!



RESEARCH PROGRAM ON
**Climate Change,
Agriculture and
Food Security**



6th European Cocoa Forum, 15&16 September 2016, Croatia
C. Bunn, Mark Lundy, Fabio Castro et al.

