

# African Chicken Genetic Gains and Agriculture to Nutrition collaborative project



## Key messages

- Agricultural interventions can be designed to improve nutritional outcomes within smallholder farm families
- Potential interventions along the livestock food value chain, in different contexts, will impact on the nutrition status of women and young children
- Key entry points along the livestock value chain will have the greatest potential impact for empowering women of child-bearing age and improving children's nutrition
- Tailored nutrition-sensitive interventions are designed, implemented and evaluated
- Agriculture projects generate nutritional outcomes that benefit smallholder farm families, particularly women of child-bearing age and children in the first 1,000 days

## Livestock-based solutions

- Chicken and chicken products can be utilized to deliver positive nutritional outcomes to smallholder farm families through the generation of robust evidence
- Chicken and chicken products improve nutritional outcomes among rural poor households, in particular among women of child-bearing age and young children in the first 1000 days of life

## Results and evidence

- Robust evidence influencing decision making at household, project/practice and policy levels (i.e. advanced knowledge and tools of how to maximize the impact of agricultural investments on nutritional outcomes)
- Increased agricultural productivity (e.g. chicken) and improved nutritional status contributing to breaking the vicious cycle of malnutrition at family and societal levels
- Empowered women with the capacity to influence behavioural change and nutritional outcomes
- Gender being recognized as a higher investment priority in agriculture research and development activities among government, multilateral institutions, and civil society
- Increased knowledge among farmers on the importance of livestock products for improving nutritional outcomes at household level
- Field testimonies
- Improved knowledge levels of farmers
- Adoption of new promoted behaviours among farmers

## Multiplier effects

- Ministry of Agriculture and health working together with implementing partners in improving farmers nutritional status
- Working in existing government structures improves the implementation of project activities at grassroots level
- Agriculture and health are well linked, speaking the same language

## Contacts

Tadelle Dessie  
ILRI, Ethiopia  
[t.dessie@cgiar.org](mailto:t.dessie@cgiar.org)



This document is licensed for use under the Creative Commons Attribution 4.0 International Licence. May 2017

We thank all donors and organizations which globally support its work through their contributions to the [CGIAR system](http://www.cgiar.org)

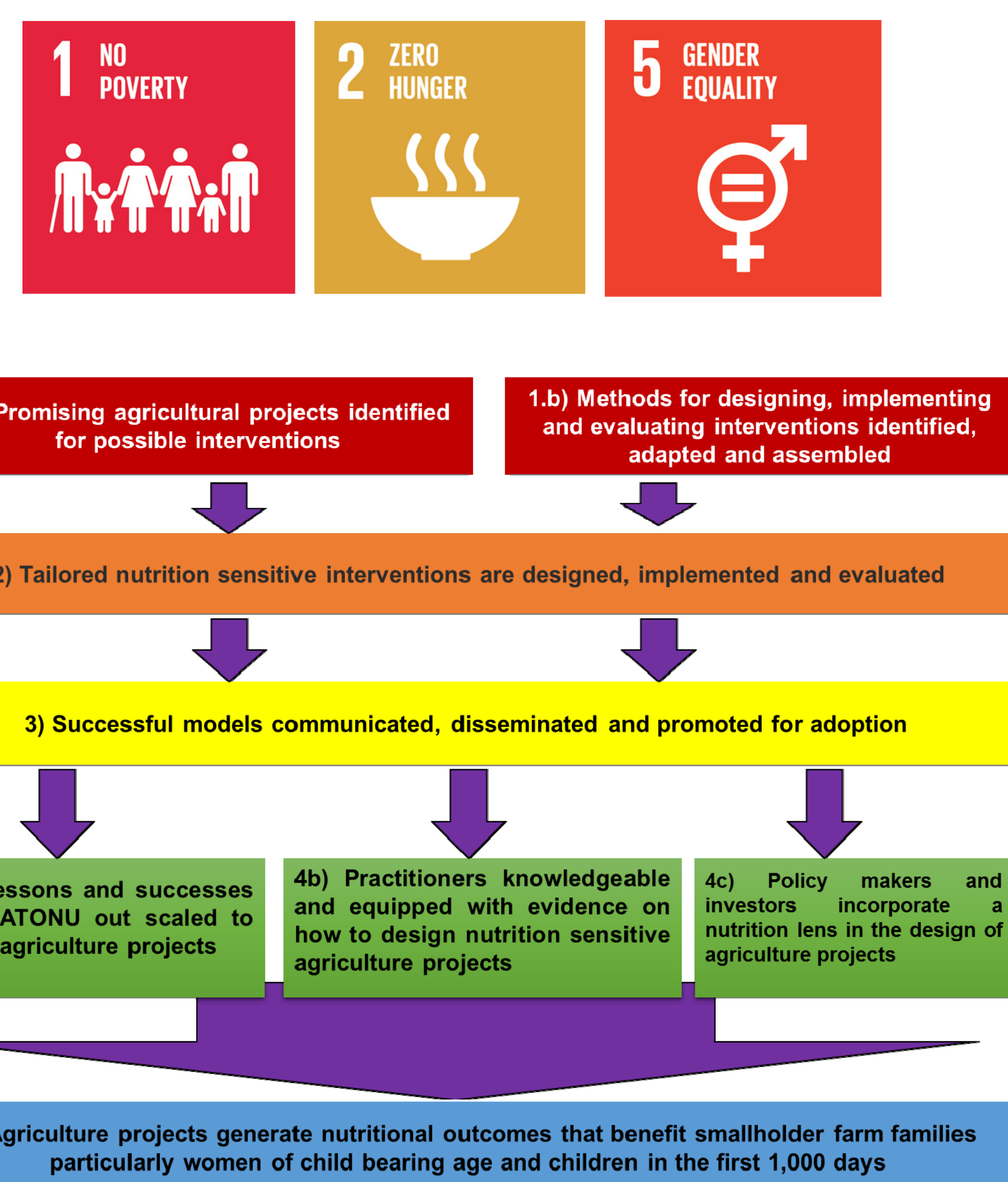


Fig 1: ATONU theory of Change

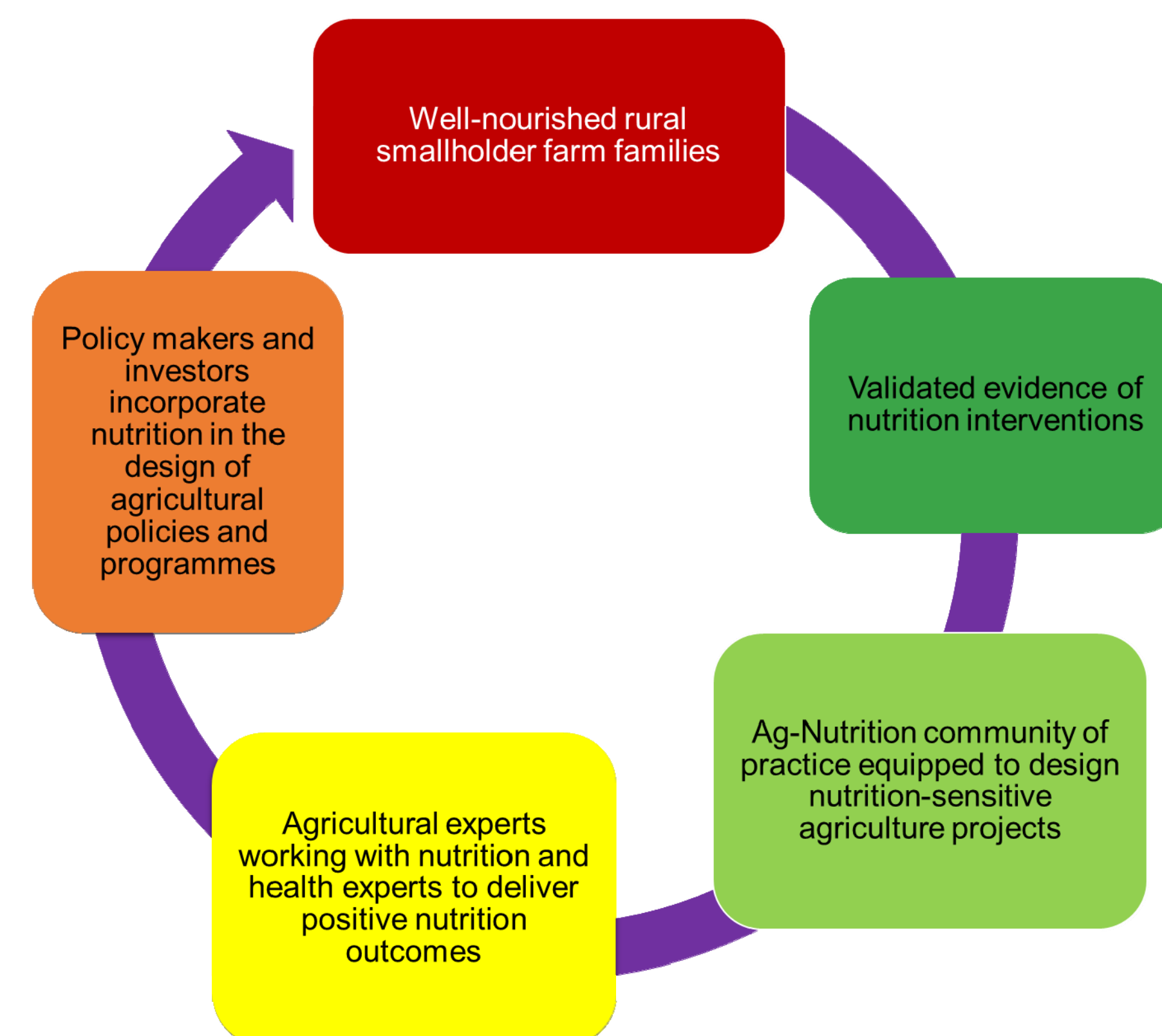


Fig 2: What will success look like

## Partners



## 7<sup>th</sup> Multi-Stakeholder Partnership Meeting

Achieving multiple benefits through livestock-based solutions, Addis Ababa, 8-12 May 2017

