



# IFPRI'S STRATEGY AT A GLANCE

## TOWARD FOOD AND NUTRITION SECURITY

The strategy for the International Food Policy Research Institute (IFPRI) for the next decade outlines how we strive to make our vision come true and how we go about fulfilling our mission.

### Setting Our Priorities

IFPRI's research and outreach agenda includes four sets of criteria that determine our priorities:

- 1 Our work program must conform to our mission to provide *sustainable solutions for ending hunger and poverty*.
- 2 Our research and outreach should address emerging issues that most directly affect food security, nutrition, and poverty.
- 3 We produce international public goods: our research, capacity-strengthening, and communications activities should be based on our comparative advantage and produce results applicable to many countries.
- 4 We consult with our stakeholders and partners to identify food policy research that will support policies that effectively and efficiently reduce hunger and poverty.

### Key Features of IFPRI

IFPRI desires to be a trusted global research center that

- provides the knowledge needed for food and nutrition policy serving poor people;
- boldly and independently communicates findings based on sound analysis, even when they are controversial;
- serves as a source of in-depth understanding of the linkages between research and policy change;
- responds quickly to changing conditions and opportunities for designing improved food policy serving low-income countries; and
- serves as a valued strategic partner within the CGIAR system and within an enlarged community of partners and stakeholders, with a strong presence in developing countries through partnerships, networks, and decentralized operations.

### Research and Outreach

We divide our work into 15 themes, which entail research (Themes 1–13), policy communications (Theme 14), and capacity strengthening (Theme 15), with research as the main driving force. Based on the priority-setting criteria, we group the 13 research and outreach themes under three overarching research priorities. Most of the research themes are interlinked; as such they are pursued not in isolation but as components of an integrated research program.

# IFPRI's Strategy

## Priority on Global Food System Functioning

Policies to address constraints to achieving food and nutrition security and support more efficient functioning of the global food, nutrition, and agriculture system; such policies enhance inclusion of low-income countries, improve the food and nutrition security of poor people, and aid in the sustainable management of natural resources.

- Theme 1:* Global food situation and scenarios of policy risks and opportunities
- Theme 2:* Globalization, retail food industries, and trade negotiations related to food and agriculture
- Theme 3:* Managing natural resources of particular importance to food, nutrition, and agriculture
- Theme 4:* Food systems in disaster prevention and relief, and rebuilding after crises

## Priority on Global and National Food System Governance

Policies to improve global and national governance, political participation, and institutions for pro-poor food, agriculture, and natural resource management systems.

- Theme 5:* Governance structures and policy processes in food and agriculture: the role of the state, the private sector, and civil society
- Theme 6:* Food and water safety policies
- Theme 7:* Policies addressing hidden hunger, enhanced food and diet quality for poor people, and the nutrition transition in developing countries
- Theme 8:* Policies and interventions for sustainable poverty reduction and nutrition improvement
- Theme 9:* Cross-cutting research on country and regional food, nutrition, and agricultural strategies

## Priority on Food System Innovations

Policies to foster scientific and institutional innovation and technology use for the benefit of poor people in developing countries, and development of related comprehensive food and agriculture strategies.

- Theme 10:* Food- and nutrition-related science and technology policy serving poor people
- Theme 11:* The future of smallholder farming in efficient and equitable food systems
- Theme 12:* Urban-rural linkages and nonfarm rural development in efficient and equitable food systems
- Theme 13:* Knowledge systems and innovation

## Policy Communications

- Theme 14:* Cultivate two-way communications with key stakeholders in developing and developed countries and provide factual, timely, and competent information on all questions related to food and nutrition security and natural resource management.

## Capacity Strengthening for Policy and Research

- Theme 15:* Provide research-based knowledge to build the capacity of researchers, policymakers, trainers, practitioners, administrators, extension workers, students, community leaders, and others to address food-policy issues through research, analysis, communications, policy formulation, institutional change, and organizational management.

---

## IFPRI Divisions

Development Strategy and Governance Division • Environment and Production Technology Division • Food Consumption and Nutrition Division • International Service for National Agricultural Research Division • Markets, Trade, and Institutions Division • Communications Division

[www.ifpri.org](http://www.ifpri.org)

Visit IFPRI's website for the full text of IFPRI's strategy.

## INTERNATIONAL FOOD POLICY RESEARCH INSTITUTE

### IFPRI HEADQUARTERS

2033 K Street, NW  
Washington, DC 20006-1002 USA  
T. +1.202.862.5600  
F. +1.202.467.4439  
E. [ifpri@cgiar.org](mailto:ifpri@cgiar.org)

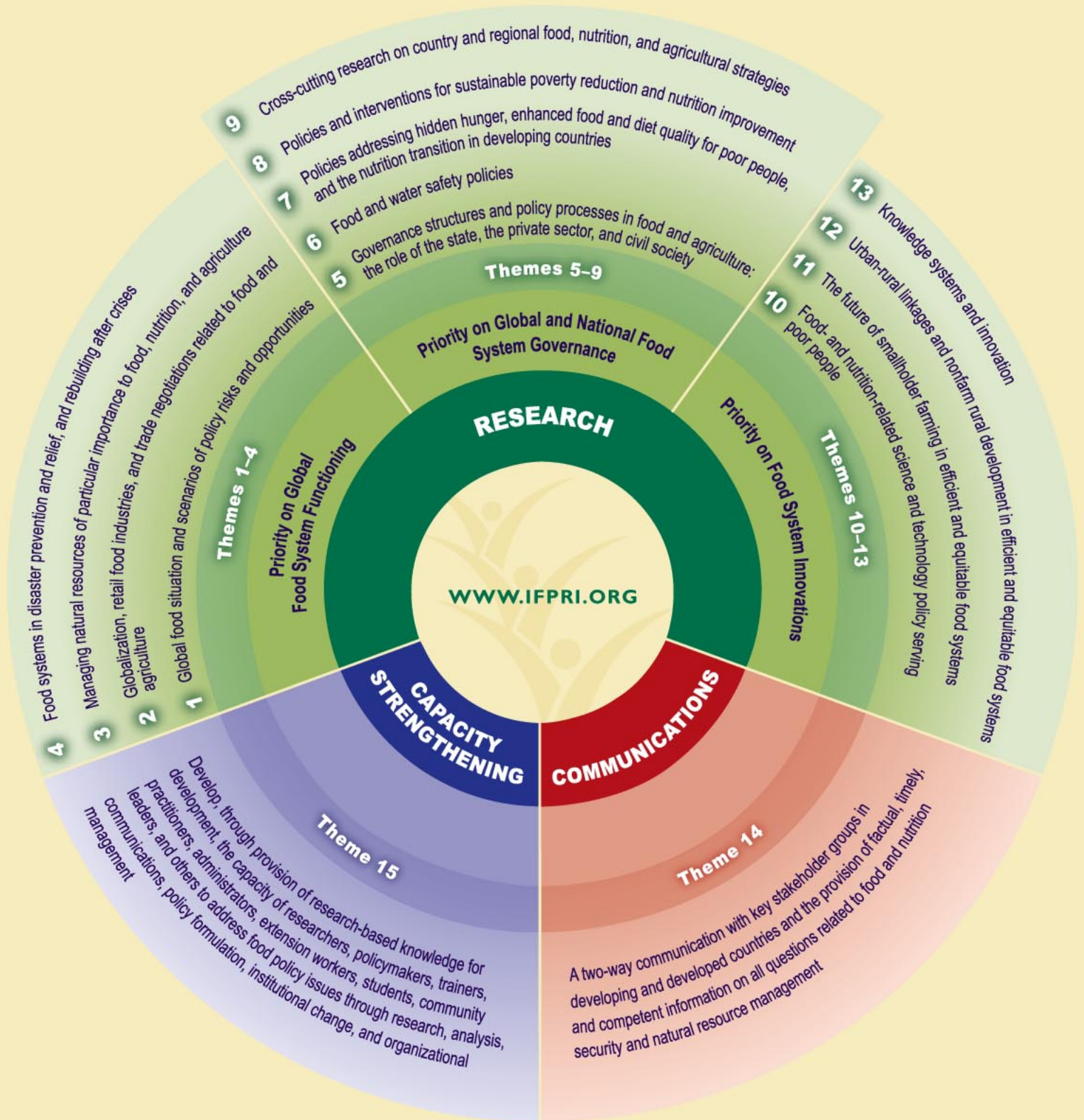
### IFPRI ADDIS ABABA

P. O. Box 5689  
Addis Ababa, Ethiopia  
T. +251.1.463.215  
F. +251.1.461.252  
E. [ifpri-addisababa@cgiar.org](mailto:ifpri-addisababa@cgiar.org)

### IFPRI NEW DELHI

CG Block, NASC Complex, PUSA  
New Delhi 110 012 India  
T. +91 11 55170178  
F. +91 11 25848008 / 25846572  
E. [ifpri-newdelhi@cgiar.org](mailto:ifpri-newdelhi@cgiar.org)

# IFPRI's STRATEGY AT A GLANCE



**TOWARD FOOD AND NUTRITION SECURITY**