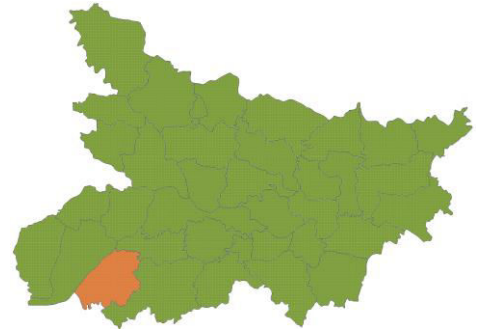


## DISTRICT NUTRITION PROFILE

### Aurangabad, Bihar

#### DISTRICT DEMOGRAPHIC PROFILE<sup>1</sup>

Total Population **2,540,073**



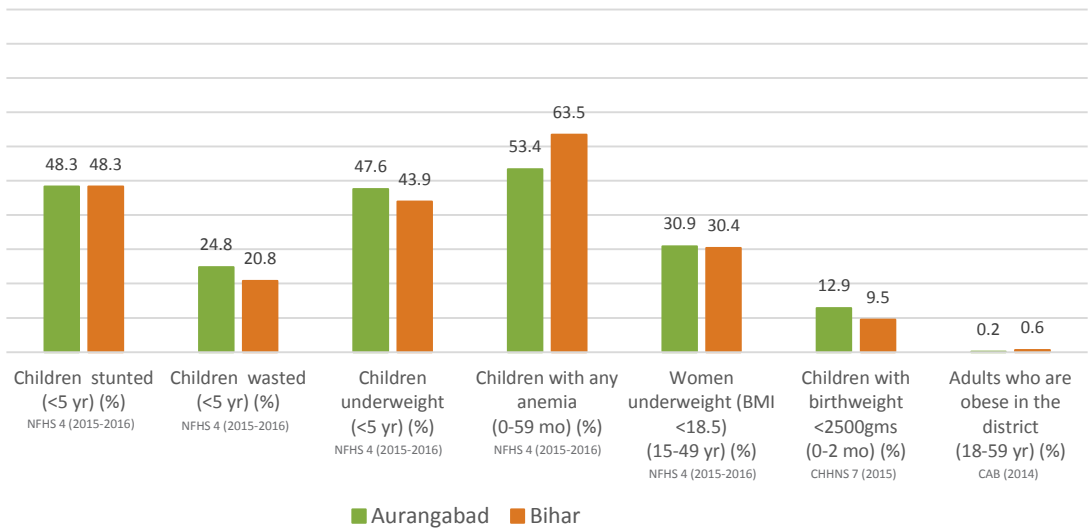
**Aurangabad ranks 557<sup>th</sup> among 599 districts in India<sup>2</sup>**  
DISTRICT DEVELOPMENT INDEX (2015)

#### THE STATE OF NUTRITION IN AURANGABAD<sup>3,4,5</sup>

**48.3%**  
CHILDREN STUNTED

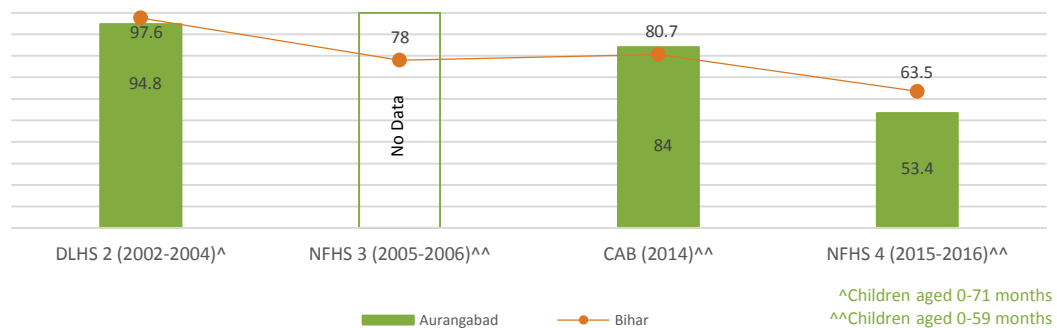
**24.8%**  
CHILDREN WASTED

**47.6%**  
CHILDREN UNDERWEIGHT



#### CHANGES OVER TIME IN ANEMIA<sup>3,5,6,7</sup>

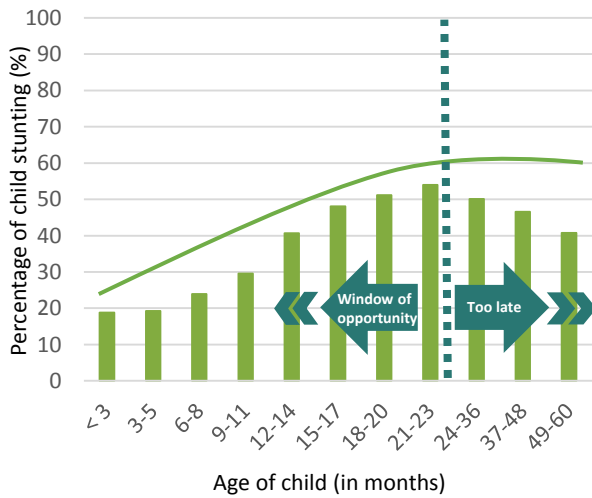
PREVALENCE OF ANEMIA AMONGST CHILDREN UNDER-SIX DECREASED IN THE DISTRICT BETWEEN 2002 AND 2016



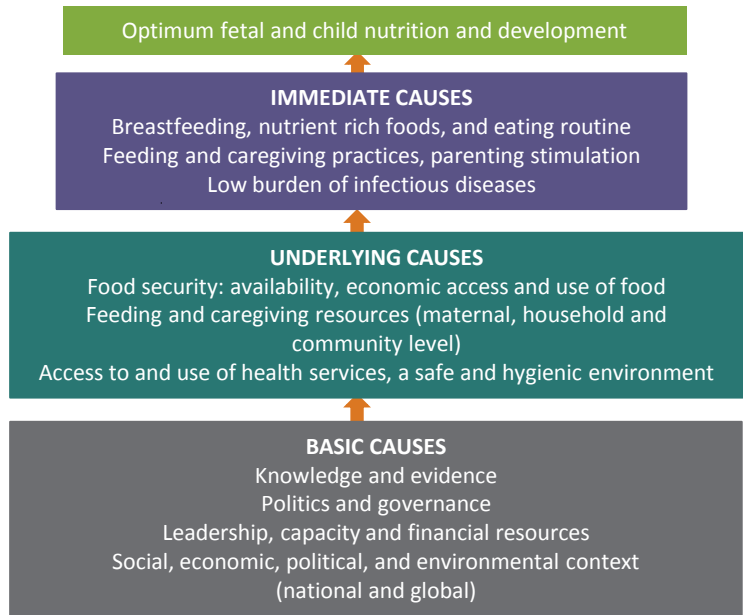
<sup>^</sup>Children aged 0-71 months  
<sup>^^</sup>Children aged 0-59 months

## HOW CAN NUTRITION IMPROVE?

The most crucial period for child nutrition is from pre-pregnancy to the second year of life<sup>2</sup>



## WHAT FACTORS CAUSE UNDERNUTRITION?<sup>9</sup>



Child undernutrition is caused by inadequacies in **food, health and care** for infants and young children, especially in the first two years of life (**immediate causes**). Inadequate food, health and care arise from food insecurity, unsanitary living conditions, low status of women, and poor health care (**underlying causes**). These are, in turn, caused by social inequity, economic challenges, poor political will and leadership to address these causes (**basic causes**). Interventions to address undernutrition must address these multiple causes of undernutrition and do so in an equitable manner.

## IMMEDIATE CAUSES OF UNDERNUTRITION



### Areas for action:

- Poor state of infant and young child feeding, poor levels of diet diversity
- Only 15.8% of children who have diarrhoea receive ORS
- Alarming levels of anaemia among adolescent girls
- Less than half of women in the district, report having received ANC in the first trimester

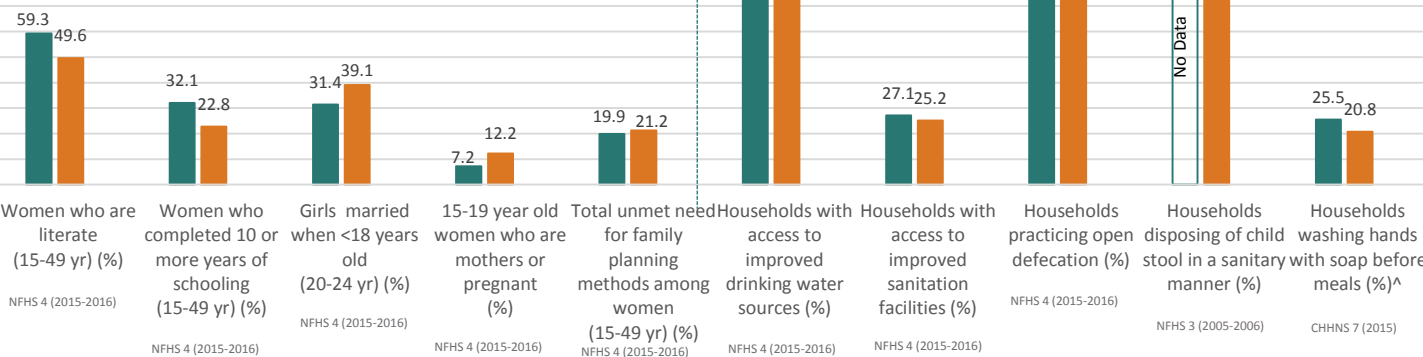
### Data challenges:

- Where data are available, indicator definitions are non-standardized and often differ from World Health Organisation recommendations

# UNDERLYING CAUSES OF UNDERNUTRITION

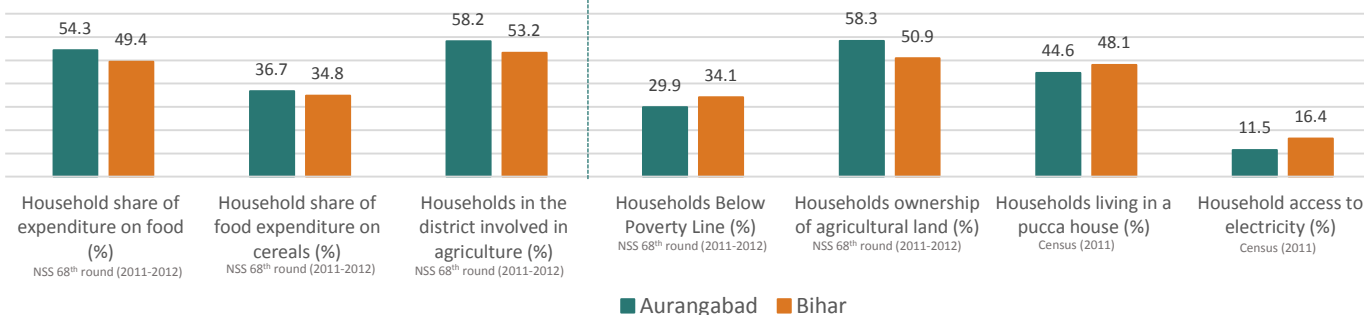
## WOMEN'S STATUS<sup>3</sup>

## WATER, SANITATION AND HYGIENE<sup>1,4,7</sup>



## FOOD SECURITY<sup>9</sup>

## SOCIO ECONOMIC CONDITIONS<sup>1,9</sup>



■ Aurangabad ■ Bihar

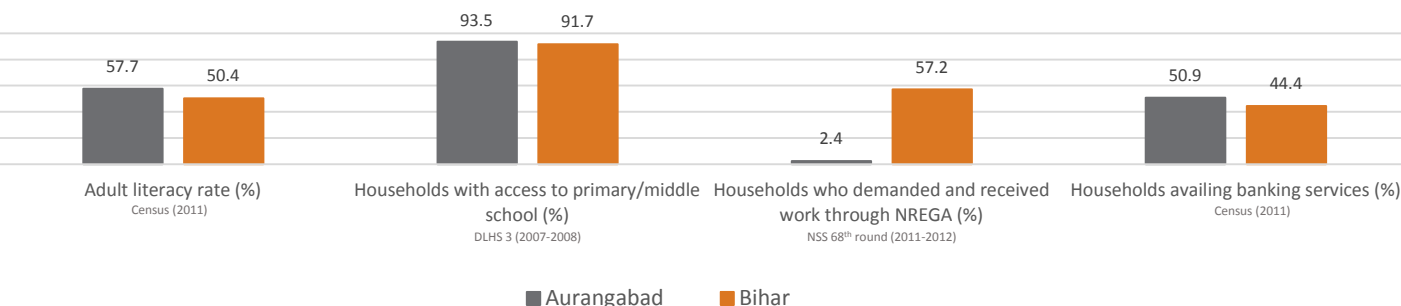
### Areas for immediate action:

- Very high rates of open defecation; critical need to increase awareness about washing hands with soap and ensuring access to using improved sanitation facilities
- Early marriage of girls less than 18 years is highly prevalent
- Less than half of women in the district are literate
- Food insecurity, especially diet quality, is a challenge that can hold back improvements in nutrition
- Very few households live in a 'pucca' house and have access to electricity

### Data challenges:

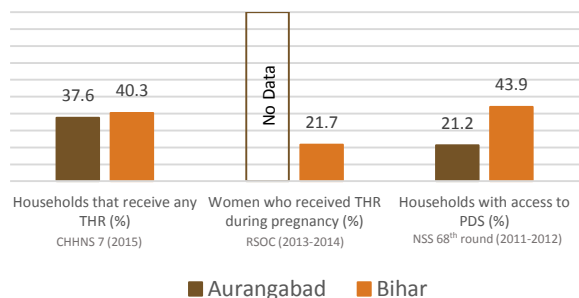
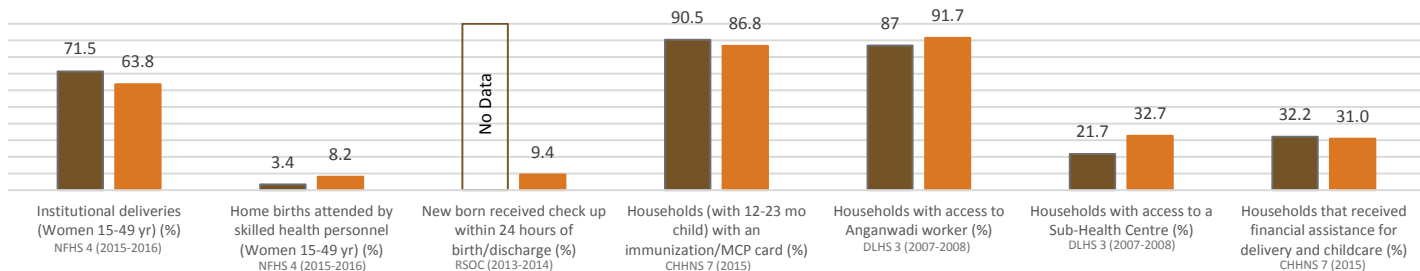
- Outdated data on open defecation
- No district-level data on child stool disposal

# BASIC CAUSES OF UNDERNUTRITION<sup>1,8,9</sup>



■ Aurangabad ■ Bihar

- Per capita gross district domestic product of Aurangabad ranked **18<sup>th</sup>** amongst 38 districts of Bihar in 2011-12<sup>15</sup>
- Bihar's per capita income ranked **last** amongst 32 major States/UTs in India in 2011-12<sup>16</sup>
- Action needs to be taken to improve adult literacy which is low
- No data available on indicators of governance and political will to address nutrition



## Areas for immediate action:

- Access to skilled health personnel and Sub-Health Centres is very limited
- Less than half of eligible households receive any take home ration
- Poor access to financial assistance for delivery and child care
- Majority of households do not have PDS access

## Data challenges:

- Lack of data on assessing the implementation of government schemes

## FLW visits<sup>4</sup>

	Last Trimester <sup>^</sup>			Within 1 week of delivery <sup>*</sup>			Within 24 hours of delivery
	Less than recommended	Equal to recommended	More than recommended	Less than recommended	Equal to recommended	More than recommended	
Bihar	4.1%	6.7%	22.5%	26.4%	5.7%	5.4%	34.1%
Aurangabad	8.8%	3.6%	13.9%	22.7%	2.6%	3.6%	24.0%

<sup>^</sup>2 recommended visits; <sup>\*</sup>3 recommended visits



### Data sources

1. Census of India. 2011. *Primary Census Abstract*. Accessed June 6, 2015, [www.censusindia.gov.in/pca/default.aspx](http://www.censusindia.gov.in/pca/default.aspx)
2. Census of India. 2011. *Housing and Housing Census Data*. Accessed March 18, 2015, [www.censusindia.gov.in/2011census/hlo/HLO\\_Tables.html](http://www.censusindia.gov.in/2011census/hlo/HLO_Tables.html)
3. Us-India Policy Institute. 2015. *District Development and Diversity Index*. Accessed July 2, 2015, <http://www.usindiapolicy.org/updates/general-news/2255-district-development-and-diversity-index-report>
4. *National Family Health Survey (NFHS-4), 2015-16, India*. Mumbai: International Institute for Population Studies.
5. Concurrent Household Health and Nutrition Survey (Round-7), Concurrent Monitoring and Learning Unit, CARE India – Bihar
6. Census of India. 2014. *Clinical, Anthropometric & Bio-chemical (CAB) survey*. <http://www.censusindia.gov.in/2011census/hh-series/HH-2/Bihar%20CAB%20Sample%20Characteristics%202014.pdf>
7. Author's estimates based on *District Level Household Survey on Reproductive and Child Health (DLHS-2), 2002-04, India*.
8. International Institute for Population Studies. (IIPS). 2006. *District Level Household Survey on Reproductive and Child Health (DLHS-2), 2002-04, India: Nutritional Status of Children and Prevalence of Anemia among Children, Adolescent Girls and Pregnant Women*. Mumbai: IIPS. March 18, 2015, [www.rchiips.org/pdf/rch2/National\\_Nutrition\\_Report\\_RCH-II.pdf](http://www.rchiips.org/pdf/rch2/National_Nutrition_Report_RCH-II.pdf)
9. Author's estimates based on *National Family Health Survey (NFHS-3), 2005-06, India*. Mumbai: International Institute for Population Studies.
10. International Institute for Population Studies (IIPS). 2010. *District Level Household Survey and Facility Survey (DLHS-3), 2007-08, India, Bihar*. Mumbai: IIPS. Accessed June 28, 2015, <http://rchiips.org/pdf/rch3/report/BH.pdf>
11. Author's estimates based on *Household Consumption Expenditure, National Sample Survey Office (NSSO) 68th Round, 2011-12*. Ministry of Statistics and Program Implementation. Government of India
12. Author's estimates based on *Employment and Unemployment, National Sample Survey Office (NSSO) 68th Round, 2011-12*. Ministry of Statistics and Program Implementation. Government of India
13. Finance Department, Government of Bihar. *Economic Survey Report 2011-12: Gross District Domestic Product at Constant Prices (2005-06)*. Accessed March 18, 2015, <http://finance.bih.nic.in/Documents/Reports/Economic-Survey-2012-EN.pdf>
14. Government of India. 2014. *State-wise Per Capita Income and Gross Domestic Product at current prices*. Accessed July 2, 2015, <http://pib.nic.in/archieve/others/2014/aug/d2014070801.pdf>
15. UNICEF. 2013-2014. *Rapid Survey on Children (RSC)*. [http://wcd.nic.in/RSOC/21.RSOC\\_Bihar.pdf](http://wcd.nic.in/RSOC/21.RSOC_Bihar.pdf)
16. Robert E Black, Cesar G Victora, Susan P Walker, Zulfiqar A Bhutta, Parul Christian, Mercedes de Onis, Majid Ezzati, Sally Grantham-McGregor, Joanne Katz, Reynaldo Martorell, Ricardo Uauy, and the Maternal and Child Nutrition Study Group. 2013. *Maternal and Child Undernutrition and Overweight in Low-income and Middle-income Countries*. *The Lancet* 382 (9890), 427-451.
17. Planning Commission. 2013. *Press note on poverty estimates, 2011-12*. Government of India. Accessed March 18, 2015, [http://planningcommission.nic.in/news/pre\\_pov2307.pdf](http://planningcommission.nic.in/news/pre_pov2307.pdf)
18. Government of Bihar. 2015. *Economic Survey 2014-15*. Accessed July 2, 2015, <http://finance.bih.nic.in/Documents/Reports/Economic-Survey-2015-EN.pdf>
19. Government of India. 2014. *State-wise Per Capita Income and Gross Domestic Product at current prices*. Accessed July 2, 2015, <http://pib.nic.in/archieve/others/2014/aug/d2014070801.pdf>
20. Photo Credit: Stephan Rebernik. 2012. <https://www.flickr.com/photos/stephanrebernik/7316902886/in/photolist-c9z3j3-84jAhD-dBqB49-bvwZKN-r9S16m-7hbFtw-ww5wR-k32J4Y-9EU6Yp-aMYGUn-qRTqX-ecqS2g-gasndt-dgcPva-rir84x-e7rvKp-4W6FEL-b4cBSB-5Fobvq-gkNLN6-97MFur-52bDg-aE6CHE-5CWZqw-89D8Wg-C2Xyr-5JVCfB-8HyAVb-95JZl-96TGaG-89DAqni-hzXBgK-btaPQJ-d4x1D9-kF5uPq-97MTqk-89D9ia-p5sahb-3fr98n-47wCFN-5dVprx-zfuf1-d89ZrP-ww5c6-sq8LAW-8kUfXq-9yJbD-kqG1vB-aashki-17a41P1>