

December 6TH, 2017

2 PM – 3:30 PM (EST)

1201 Eye Street NW
12TH Floor Conference Center
Washington, DC 20005 United States

27TH Annual

Martin J. Forman

MEMORIAL LECTURE

Building New Foundations of Human Solidarity

KEYNOTE SPEAKER

JIM YONG KIM

PRESIDENT, THE WORLD BANK GROUP

CHAIR

SHENGGEN FAN

DIRECTOR GENERAL, IFPRI



IFPRI



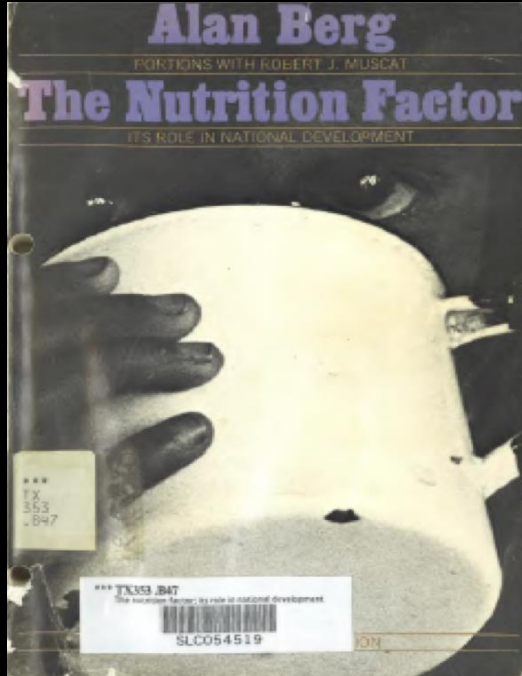
Martin J. Forman Memorial Lecture
Building New Foundations for

Human Solidarity

Jim Yong Kim
President, World Bank Group



The Nutrition Factor by Alan Berg



“The new interest in nutrition...is mixed with curiosity, and the attention devoted to it is often mixed with skepticism. Interest rarely has been translated at the operating level in to action....partly, this reflects the traditional view of malnutrition as a welfare rather than as a development problem”



WORLD DEVELOPMENT REPORT 1993

WORLD DEVELOPMENT REPORT 1993

WORLD DEVELOPMENT REPORT 1993

WORLD DEVELOPMENT REPORT 1993

WORLD DEVELOPMENT REPORT 1993

WORLD DEVELOPMENT REPORT 1993

WORLD DEVELOPMENT REPORT 1993

WORLD DEVELOPMENT REPORT 1993

WORLD DEVELOPMENT REPORT 1993

WORLD DEVELOPMENT REPORT 1993

WORLD DEVELOPMENT REPORT 1993

WORLD DEVELOPMENT REPORT 1993

WORLD DEVELOPMENT REPORT 1993

WORLD DEVELOPMENT REPORT 1993

WORLD DEVELOPMENT REPORT 1993

WORLD DEVELOPMENT REPORT 1993

WORLD DEVELOPMENT REPORT 1993

WORLD DEVELOPMENT REPORT 1993

WORLD DEVELOPMENT REPORT 1993

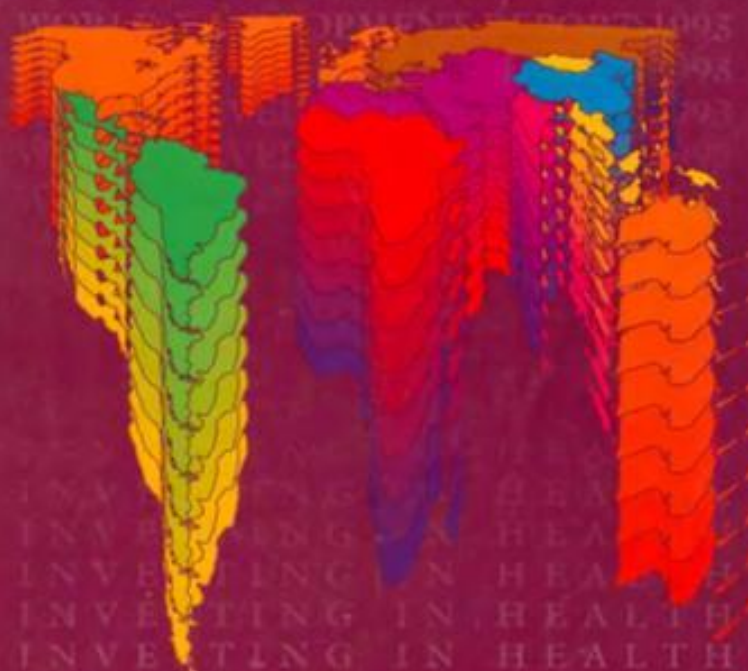
WORLD DEVELOPMENT REPORT 1993

WORLD DEVELOPMENT REPORT 1993

WORLD DEVELOPMENT REPORT 1993

WORLD DEVELOPMENT REPORT 1993

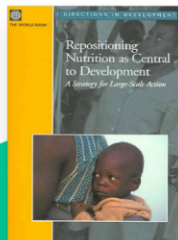
WORLD DEVELOPMENT REPORT 1993



INVESTING IN HEALTH

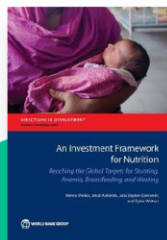
WORLD DEVELOPMENT INDICATORS

We Have Built On This Early Work In The Bank To Make Strong Economic And Human Capital Arguments



...In 2006 when we made the case for nutrition as central to development! And the nutrition star started to rise...

2006



....In 2016 The Bank developed the first ever Investment Framework for Nutrition... arguing that it was one of the best buys in development!

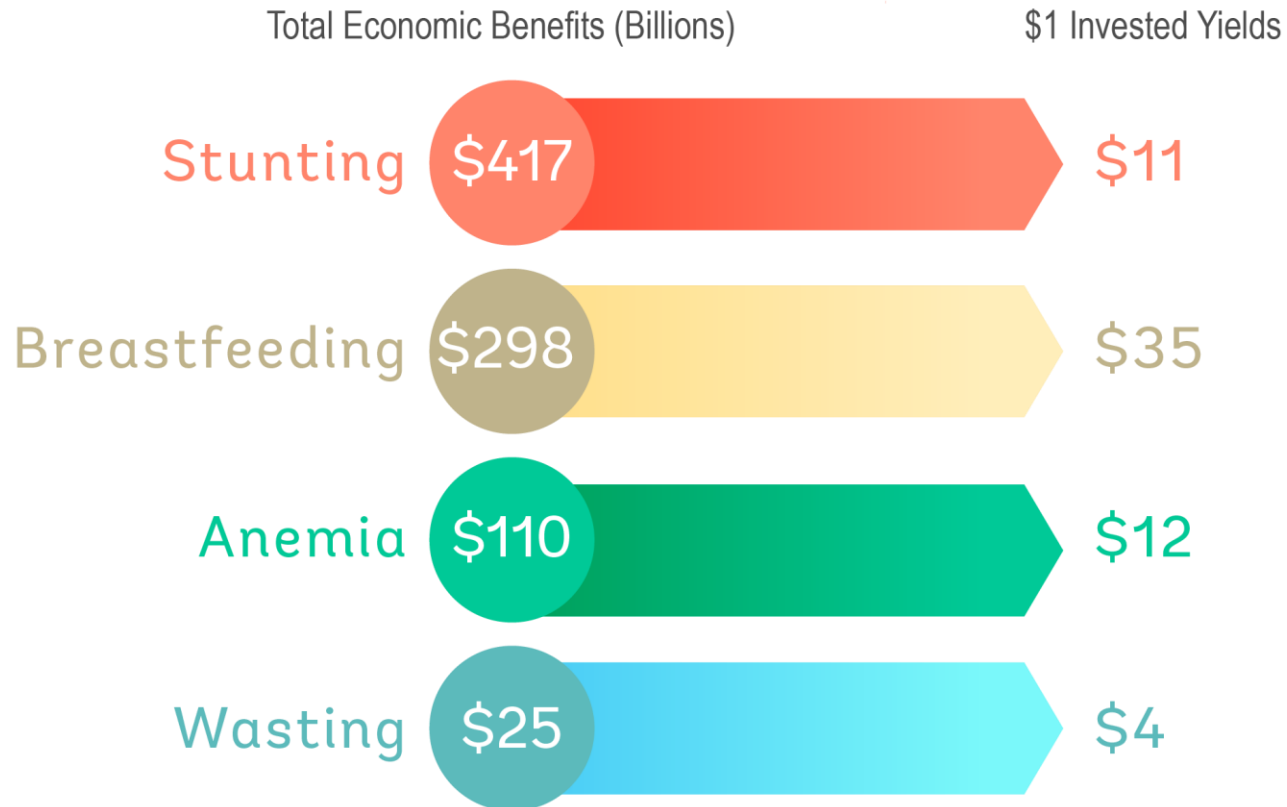
2016



In Oct 2017 World Bank "Human Capital Project" was launched

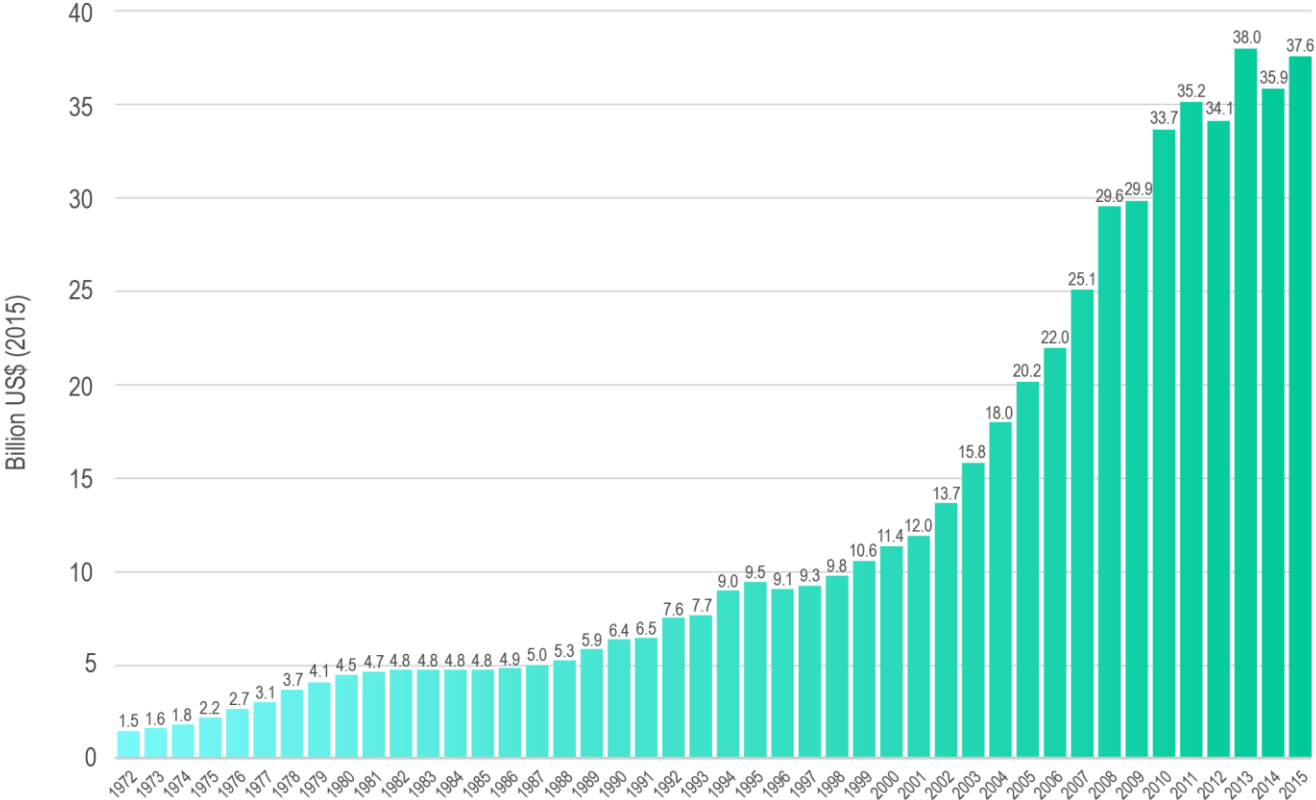
OCT
2017

These Investments Have Enormous Economic Returns



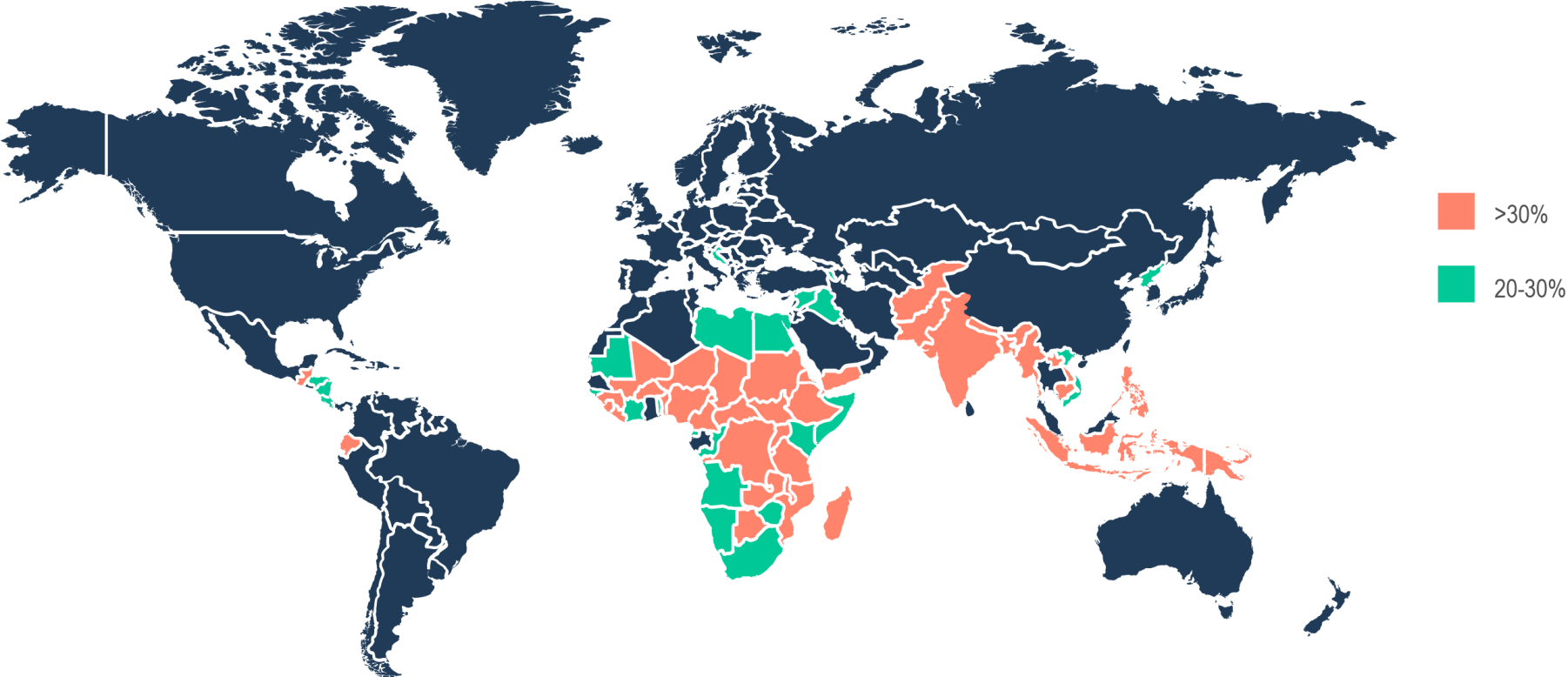
Source; Shekar, et al; *Investment Framework for Nutrition*; World Bank, 2016

Development Assistance For Health – 1972-2016

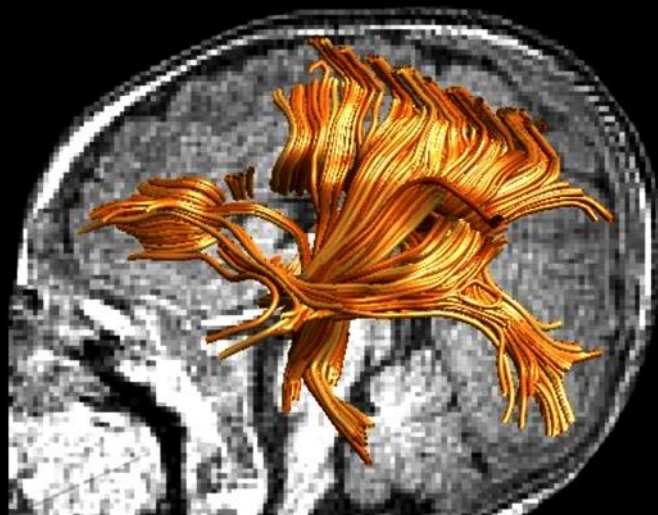




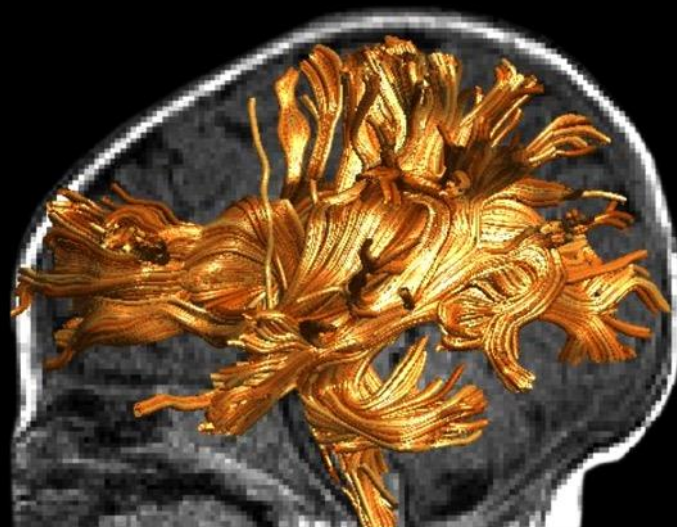
155 Million Children Under 5 Are Stunted Worldwide



THE FIRST 1,000 DAYS **LAY A LIFELONG FOUNDATION**

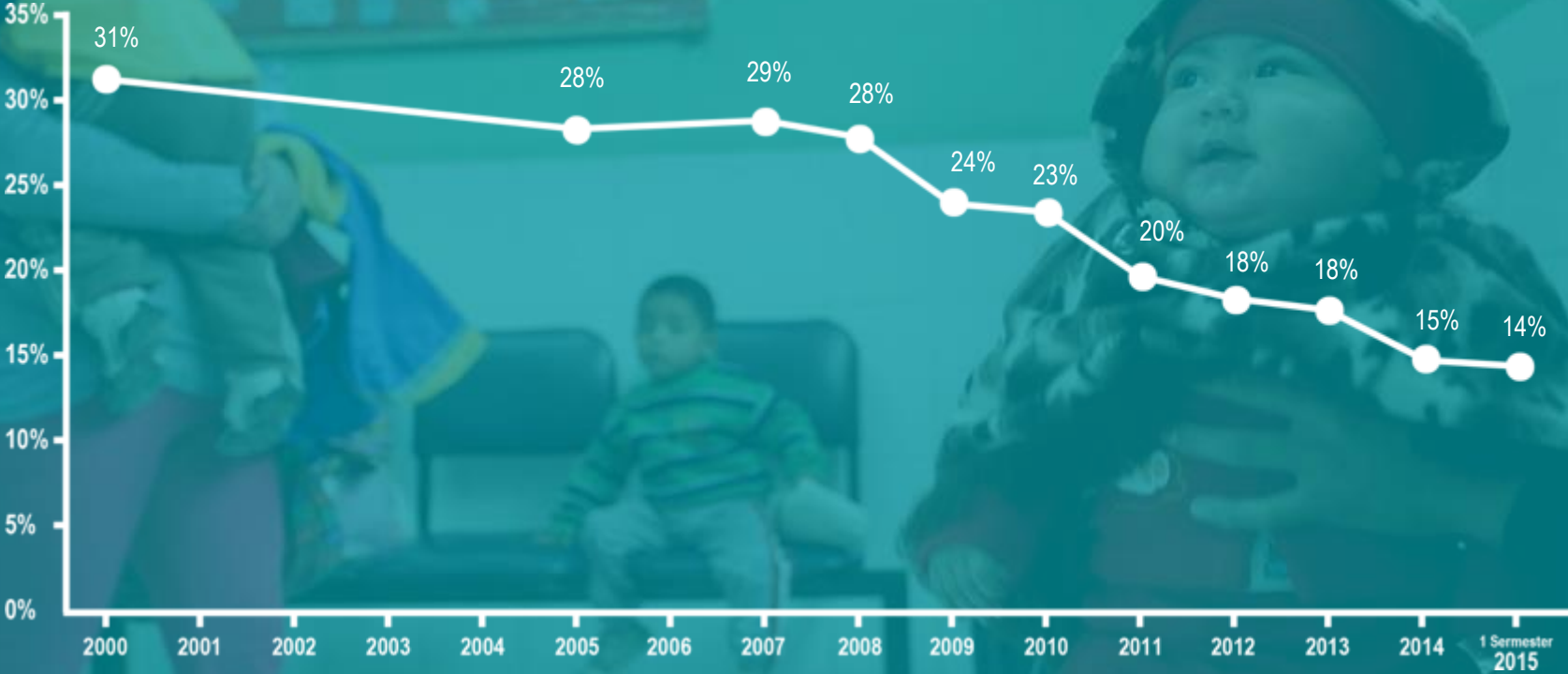


CHILD WITH STUNTED BRAIN DEVELOPMENT

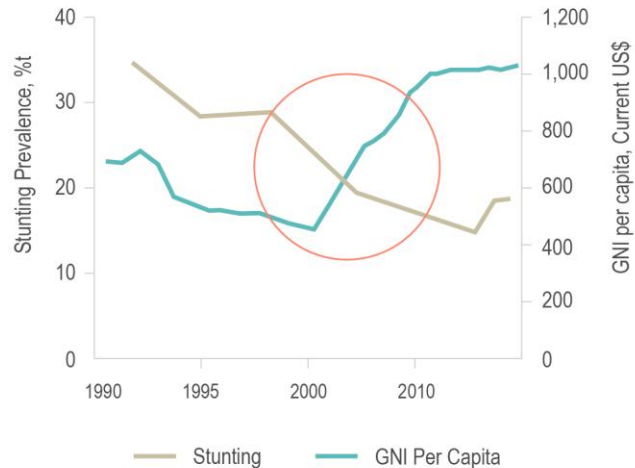


HEALTHY, CARED FOR CHILD

Peru Reduced Stunting 50% In Less Than A Decade



Senegal Dramatically Reduced Stunting And Now Has The Lowest Prevalence In Sub-Saharan Africa



Average Annual Rate of Reduction in Stunting

Pre-reform	Post reform
1992-2001	2000-2005
2.2%	7.7%

Strong Commitment

Creation of the “Unit for the Fight Against Malnutrition” (CLM) under Prime Minister

Multi-sectoral Strategy

Inclusive, **decentralized** management and **strong local government** support

Integrated, community-based service delivery of **evidence-based programming**

Innovative community mobilization (>10,000 volunteers)

Financing For Nutrition

Two rounds of IDA

1. \$14.5 million (2002-2007)

2. \$25 million (2007-2014)

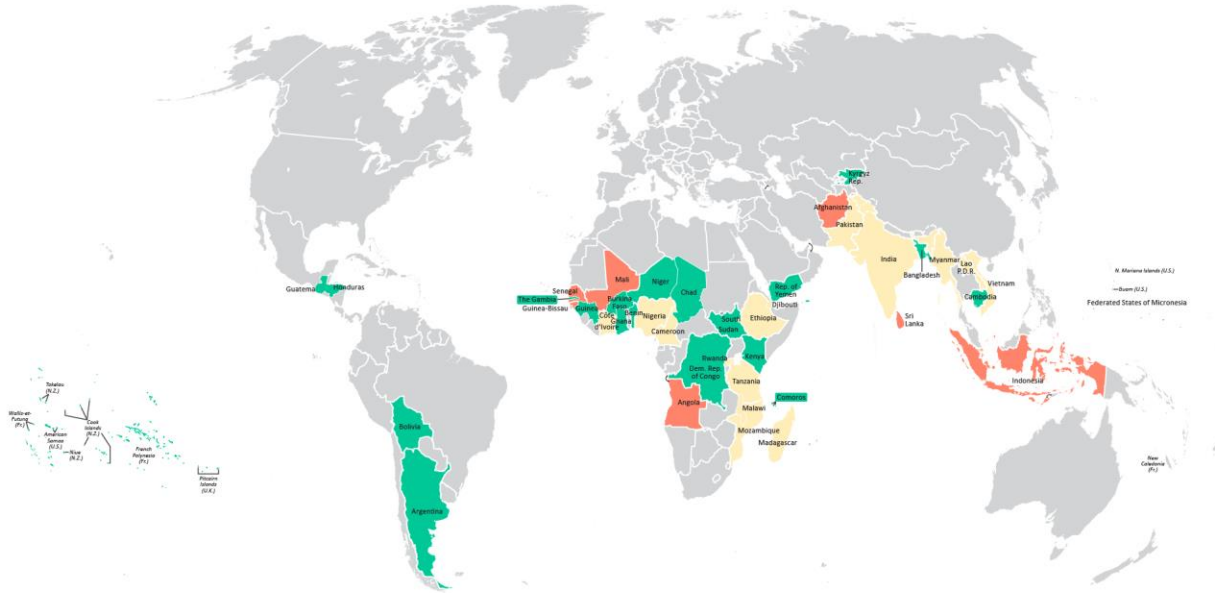
Phase 2, community-based service delivery scaled up to 14 regions, reaching ~70% of children under 5

Domestic and donor support for nutrition has continued beyond project completion

World Bank's Investments in Nutrition Are At An All-Time High

IDA17 = **\$1.9 Billion**
(2015-2017)

IDA18 = **\$1.8 Billion (and growing)**
(2018-2019)



- IDA17
 - IDA17 & IDA18
 - IDA18
- | | | |
|-----------------|---------------|---------------|
| Argentina | Cameroon | Afghanistan |
| Bangladesh | Cote d'Ivoire | Angola |
| Benin | Djibouti | Cambodia |
| Bolivia | Ethiopia | Guinea-Bissau |
| Burkina Faso | India | Indonesia |
| Cambodia | Lao PDR | Mali |
| Chad | Madagascar | Senegal |
| Comoros | Malawi | Sri Lanka |
| DRC | Mozambique | |
| Gambia | Myanmar | |
| Ghana | Nigeria | |
| Guinea | Pakistan | |
| Guatemala | Rwanda | |
| Honduras | Tanzania | |
| Kenya | Vietnam | |
| Kyrgyz Rep | | |
| Micronesia | | |
| Niger | | |
| Pacific Islands | | |
| South Sudan | | |
| Yemen | | |

And We Are Bringing New Innovative Financing Resources for Nutrition to Complement IDA

Brings together **multiple financing** sources in a **synergistic, country-led way** to close the funding gap for reproductive, maternal, newborn, child, and adolescent health and nutrition by 2030.



Factors beyond nutrition-specific interventions matter

**WOMEN'S
EDUCATION AND
EMPOWERMENT**



**QUALITY
REPRODUCTIVE AND
HEALTH SERVICES**



**QUALITY, DIVERSE
AND AFFORDABLE
FOOD**



**WATER AND
SANITATION**



**SAFETY NETS
AND RESPONSE
TO SHOCKS**



MOBILIZE THE FOOD SYSTEM TO FIGHT CHILD STUNTING

Boost incomes
Empower women
Provide diverse diets

POLICIES MATTER: AGRICULTURAL SUBSIDIES

50 COUNTRIES = \$500 BILLION ANNUALLY Mainly for
major cereals in many countries
Limits production of diverse foods

SOLUTIONS

Eliminate staple grain bias
Focus more on diverse diets
Invest in sustainable outcomes

BOOST CLIMATE-SMART AGRICULTURE, SECURE THE TRIPLE WIN

Increased productivity
Enhanced resilience
Reduced emissions



A woman with dark hair, wearing a white lab coat over a green top, is holding a clear glass jar with both hands. The jar contains green plant roots submerged in a yellowish liquid. She is looking at the jar with a focused expression. The background is a bright, slightly blurred laboratory or greenhouse environment with green plants and a window with a framed picture.

MORE AGRICULTURAL RESEARCH

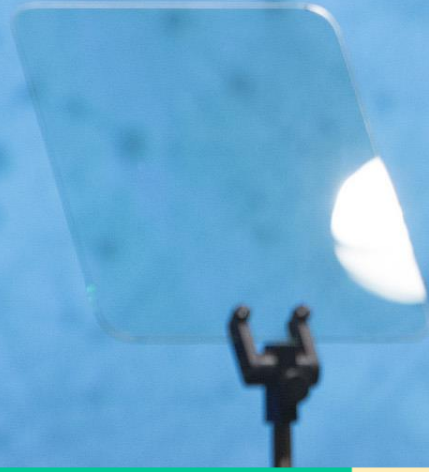
Increase yields & boost resilience

Raise micronutrient content

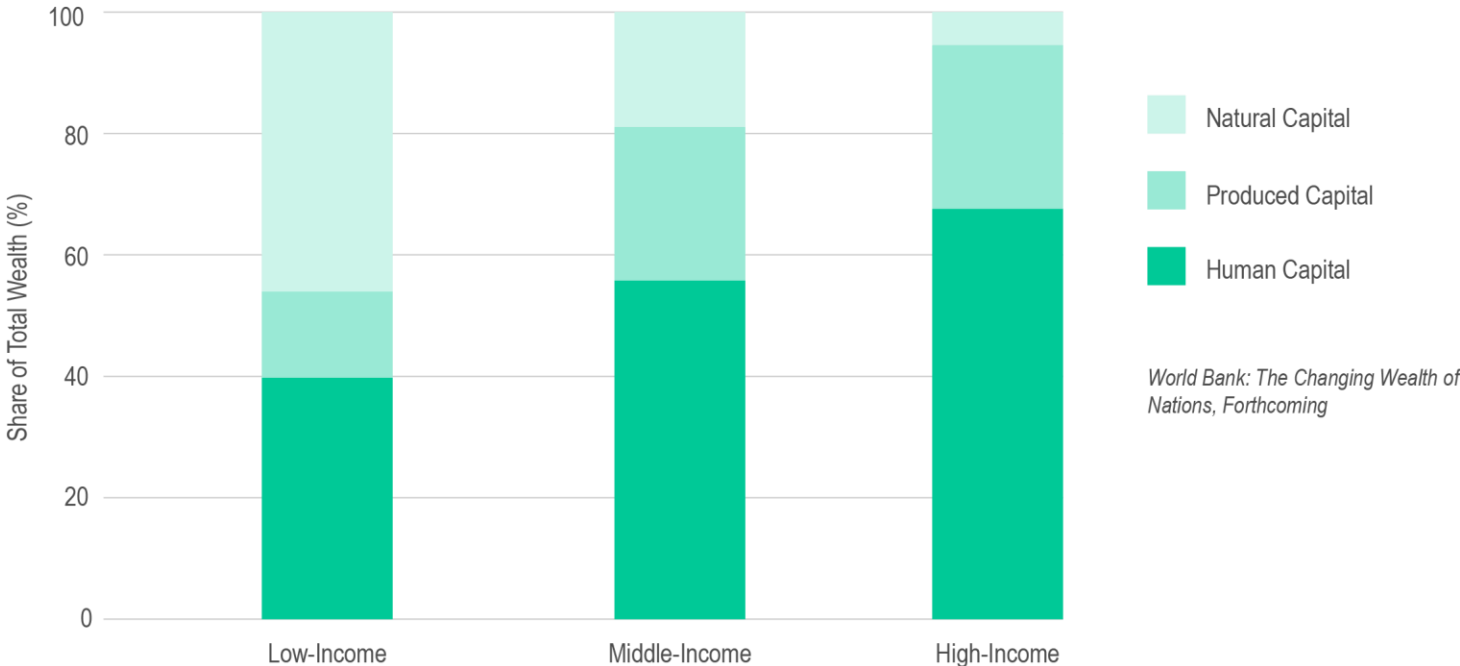
Reduce environmental footprint (biodiversity, climate, water)



A GLOBAL DEVELOPMENT

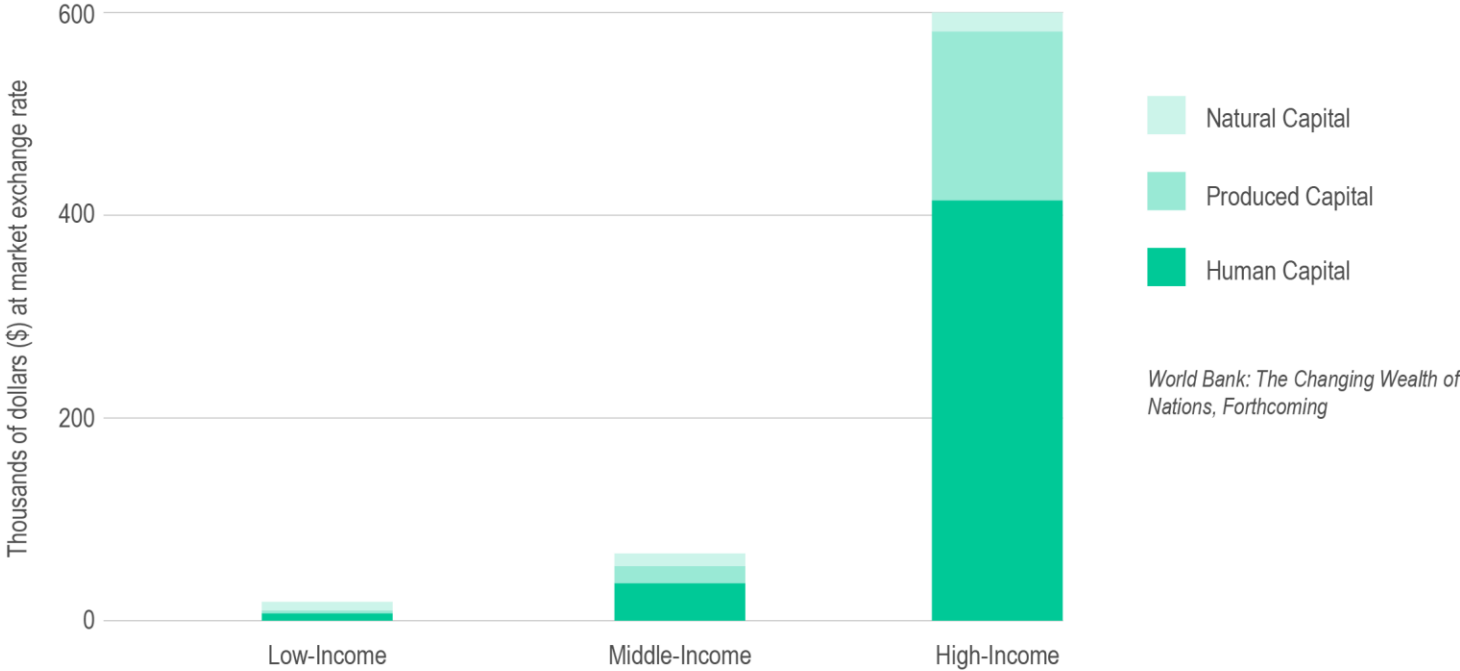


Bigger Increases in Human Capital Lead to Faster Economic Growth



Human Capital From Earnings Data

Wealth Per Capita, 2014

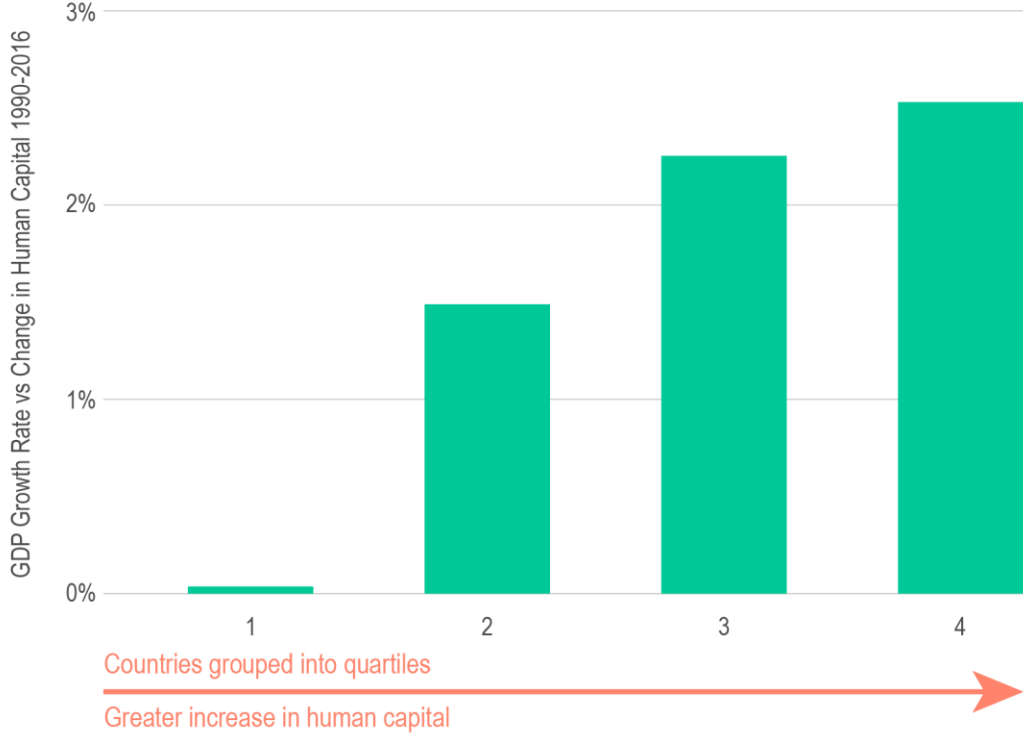


Measuring **Human Capital**



Human Capital From School and Health Data

Human Capital is Associated with Faster Growth in GDP- as much as 1.25% per year



**Dr. Julius
Richmond**

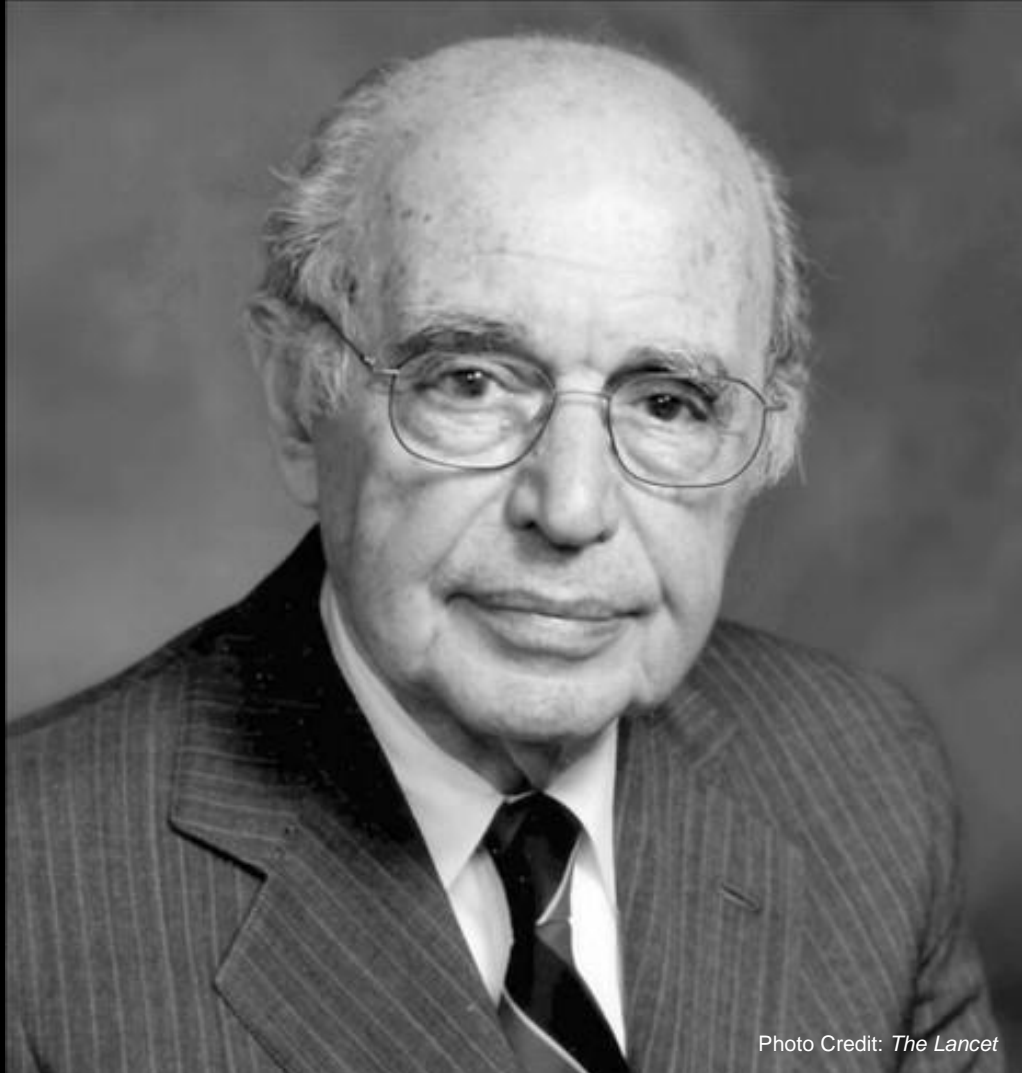
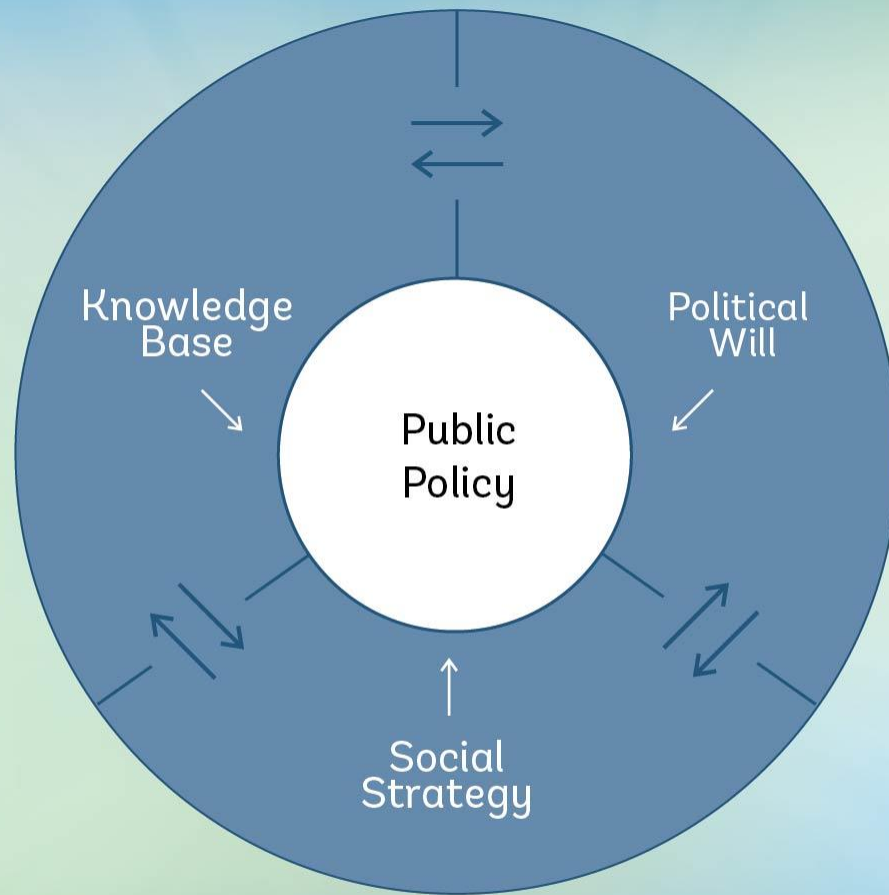


Photo Credit: *The Lancet*

**Dr. Julius
Richmond's
Model For
Social Change**





Equality of
Opportunity



Equality of
Opportunity

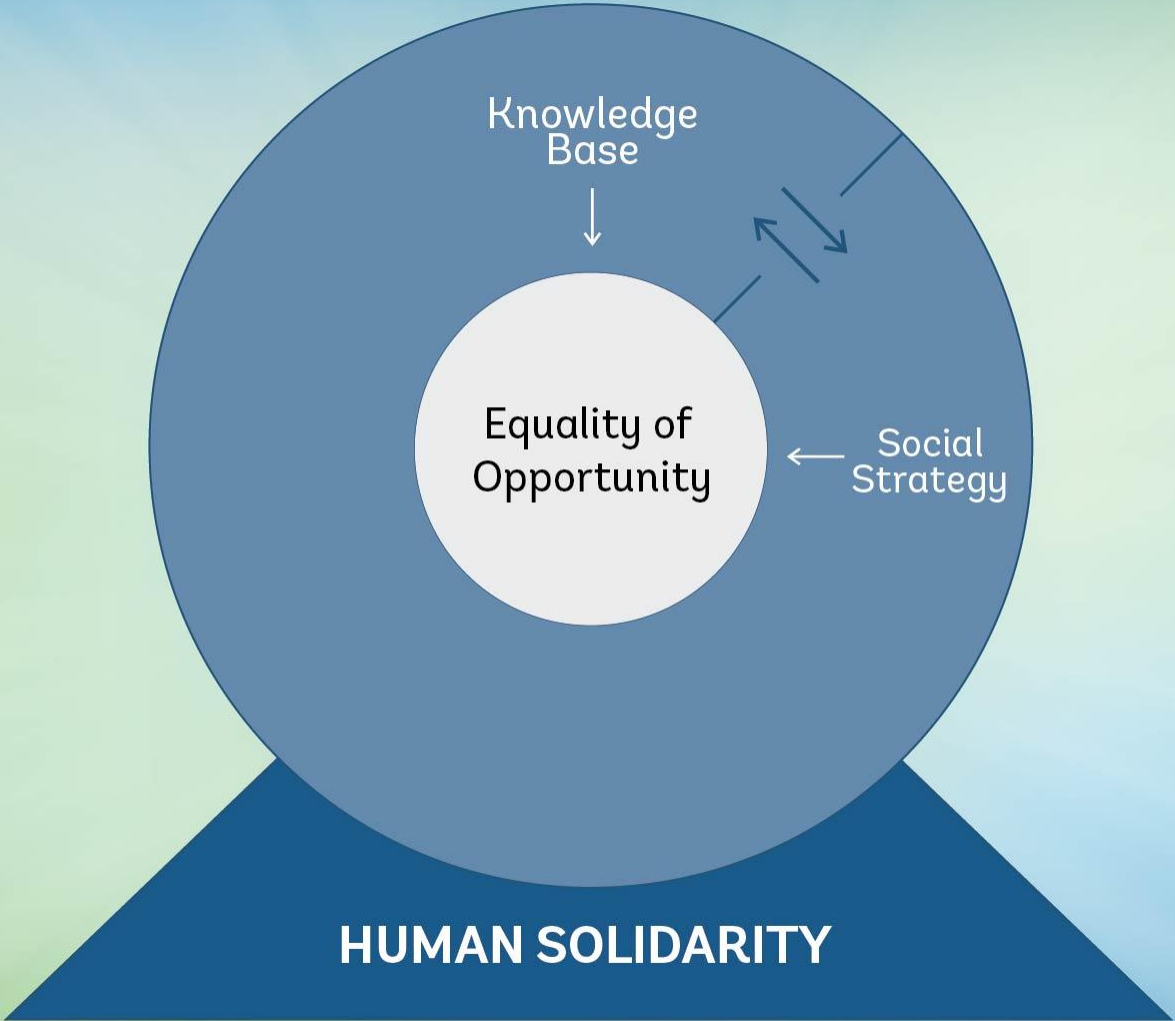
HUMAN SOLIDARITY

Knowledge
Base



Equality of
Opportunity

HUMAN SOLIDARITY



Knowledge
Base

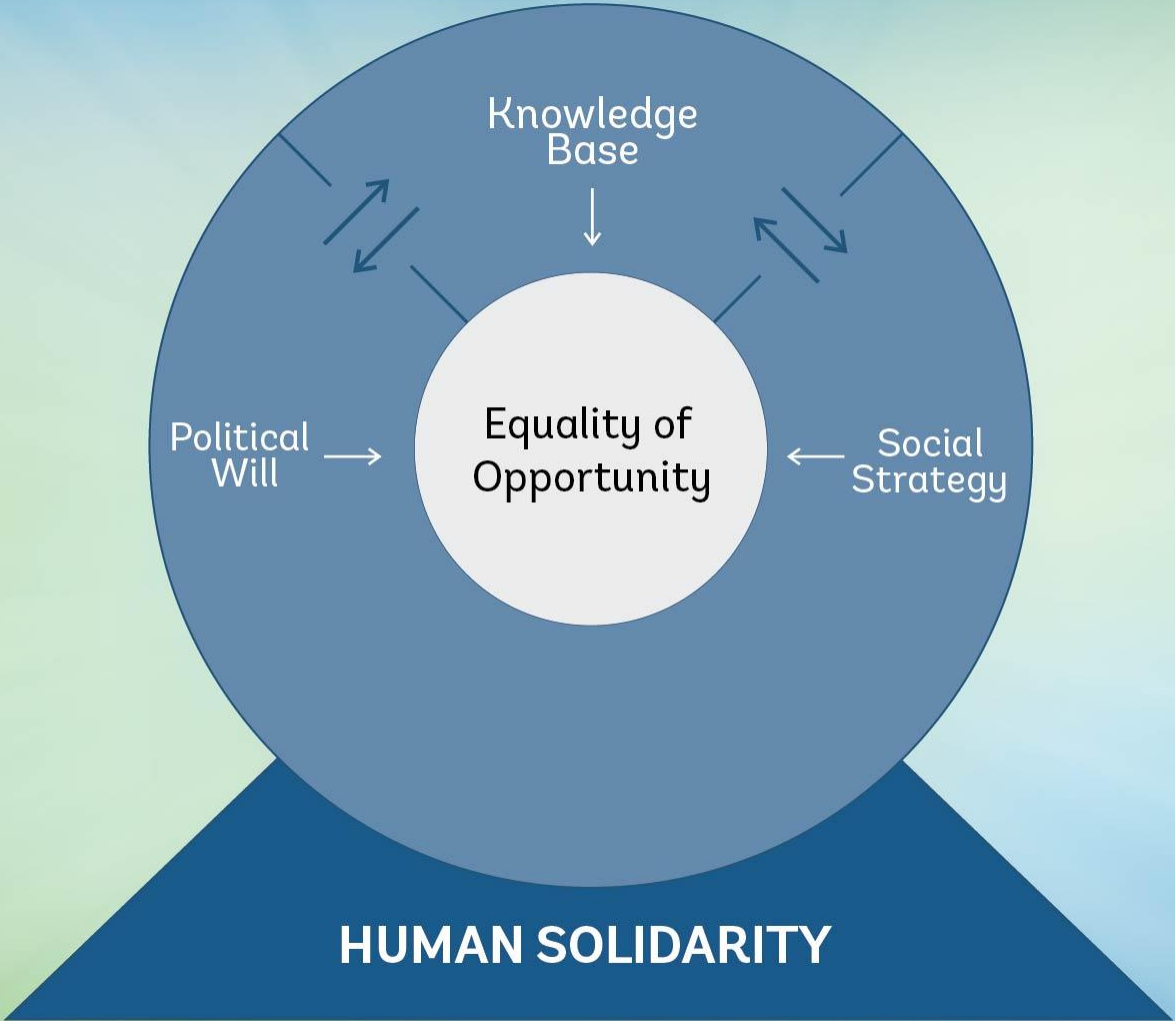


Equality of
Opportunity

Social
Strategy



HUMAN SOLIDARITY





The Human Capital Project



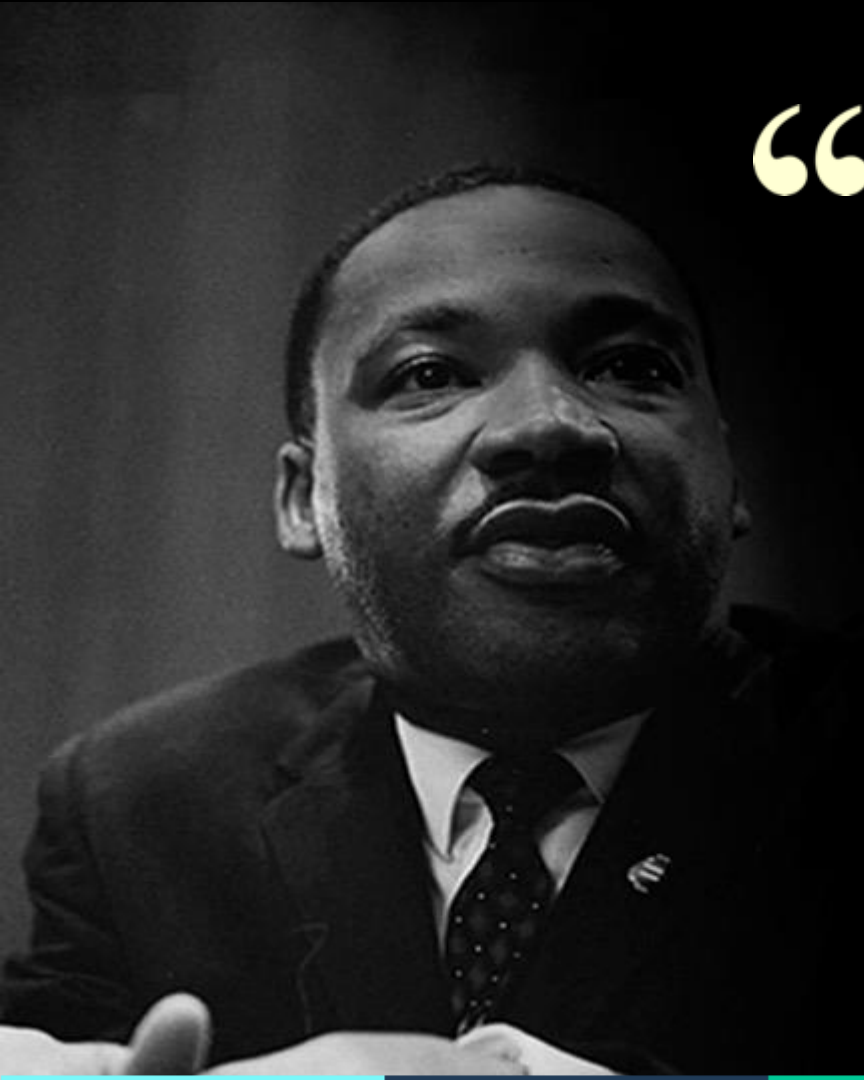




URGENCY

“All Christians know that the colored people will receive equal rights eventually—eventually—but it is possible that you are in too great a religious hurry. It has taken Christianity almost 2000 years to accomplish what it has. The teachings of Christ take time to come to Earth.”

LETTER FROM A “WHITE MODERATE” TO MARTIN LUTHER KING JR.



“

...such an attitude stems from a tragic misconception of time and a strangely irrational notion that there is something in the flow of time that will inevitably cure all ills.

Actually, time itself is neutral. It can be used destructively or constructively.

More and more I feel that the people of ill will have used time much more effectively than the people of good will.

We will have to repent in this generation not merely for the hateful words and the bad people, but for the appalling silence of the good people.

”

– MARTIN LUTHER KING JR.