

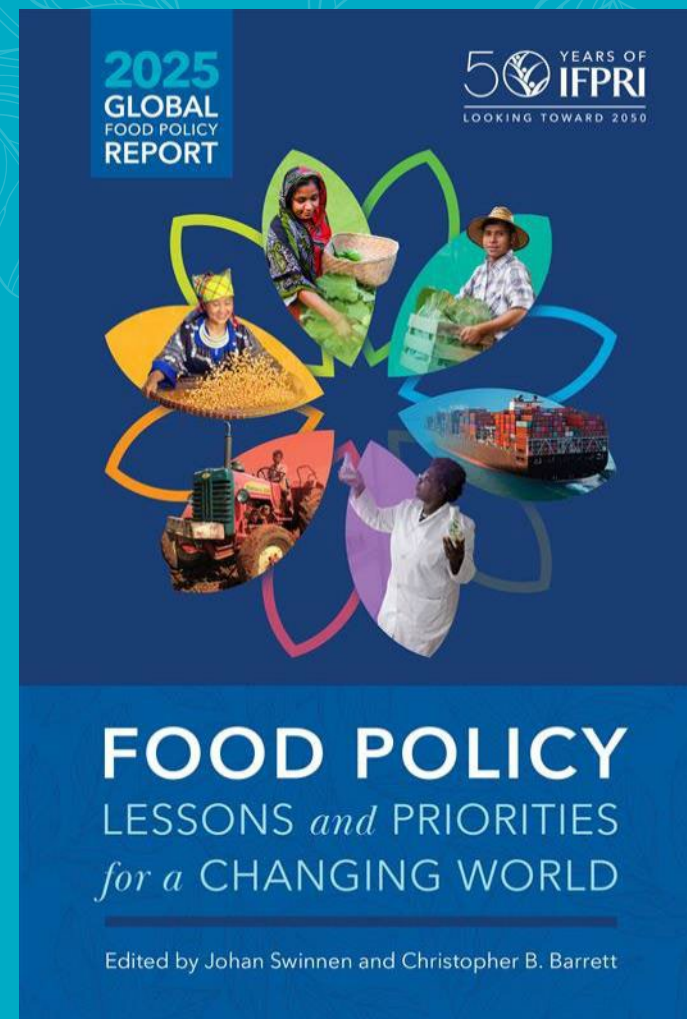
2025
GLOBAL
FOOD POLICY
REPORT

50 YEARS OF
IFPRI
LOOKING TOWARD 2050

FOOD POLICY

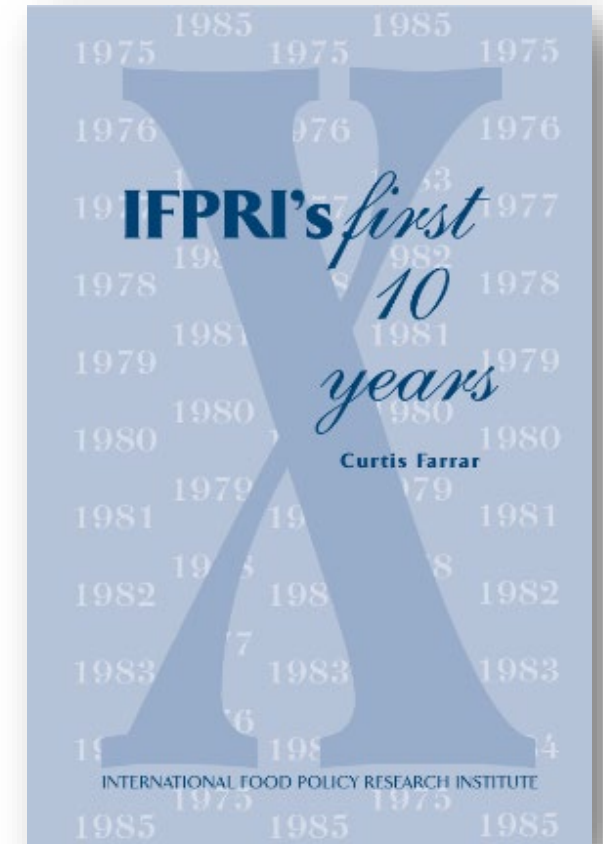
LESSONS *and* PRIORITIES
for a CHANGING WORLD

IFPRI 1975 - 2025



IFPRI 1975: Champions for food policy research

- National governments and international organizations wanted an independent institution to provide data and inform policy decisions related to developing countries.
- In 1975, IFPRI was established with the financial support of the Ford Foundation, the Rockefeller Foundation, and the International Development Research Centre (IDRC) of Canada. USAID became an early supporter.
- Focus on international public goods around four themes: (a) World Food Trends, (b) Agricultural Production, (c) Agricultural Growth Linkages, and (d) Food Subsidies.
- In 1979, IFPRI joined CGIAR.



IFPRI has evolved over time

1975

Staff: 40

IFPRI joined
CGIAR in
1979

2000s

Staff: 200



Launched
in 2003

2025

Staff: >500
Interdisciplinary
60% in country programs

Research focused on
international public goods

Greater focus on specific policy issues
at national, regional or global level

Continuous decentralization
and focus on capacity sharing

Greater specialization to
address fast emerging issues in
a rapidly changing world

Research Programs

- World food trends
- Agricultural production
- Agricultural growth linkages
- Food subsidies

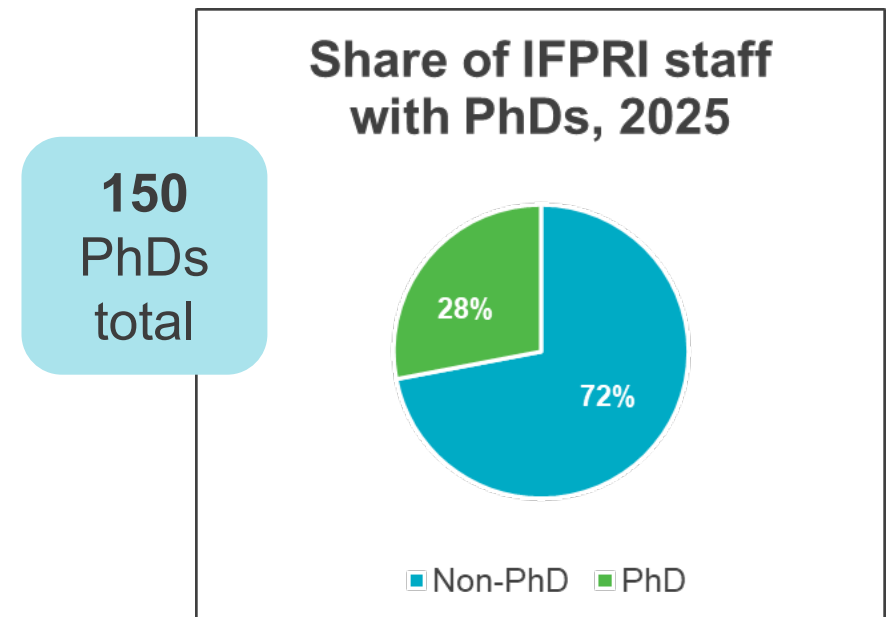
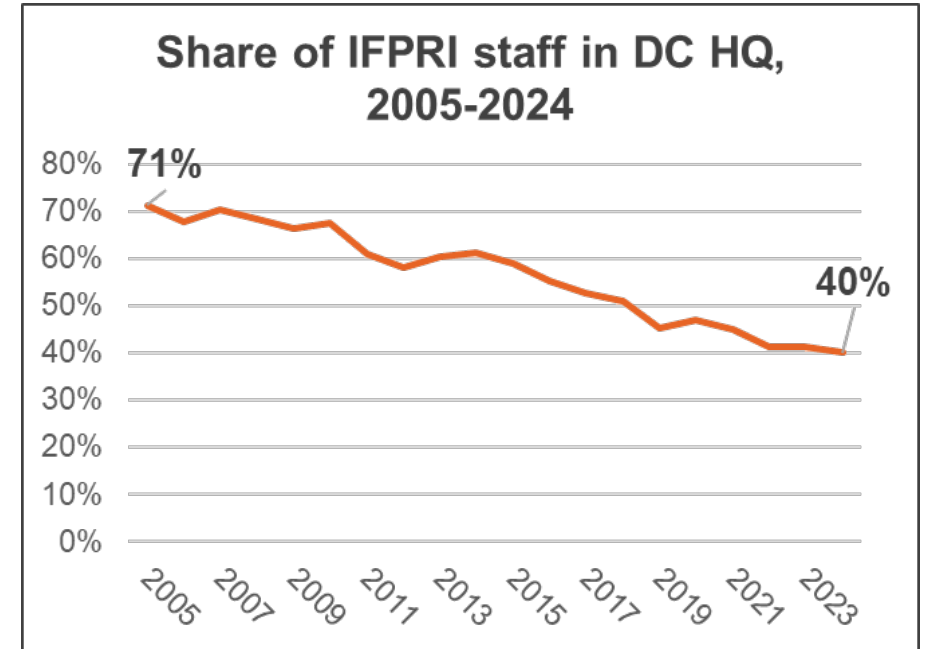
- Water resource allocation policies
- Diet quality & diet changes of the poor
- Property rights & collective action
- Pathways from poverty
- Urban challenges to food security
- HIV/AIDS & food & nutrition security
- Large scale interventions to enhance human capital
- Market development
- Genetic resources policy
- Policy processes in food security & nutrition
- WTO, regional trade, & globalization
- Priorities for public investment

...and several more

- Development Strategies & Governance
- Foresight & Policy Modeling
- Markets, Trade, & Institutions
- Innovation Policy & Scaling
- Natural Resources & Resilience
- Nutrition, Diets, & Health
- Poverty, Gender, & Inclusion

IFPRI: Who we are today

- 500-600 staff, 60% out of HQ
- Research staff are **interdisciplinary**
 - **70%** economists (evaluation, behavioral, ...)
 - **12%** nutrition and health
 - **5%** other social sciences
- **Gender experts** across disciplines
- Women make up **50%** of staff
 - **40%** of senior staff are female



IFPRI's strengths

- **Dedication to research quality**
- **Independence**
- **Reach**
 - Linking global to local
 - On the ground in fragile areas
- **Partners**
- **Focus on systemic solutions**
- **Communication**

#1 in agricultural economics

#2 in economics of Africa

#5 in development economics



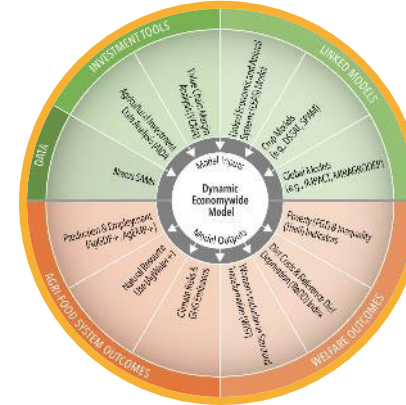
50 years of impact



Gender & development



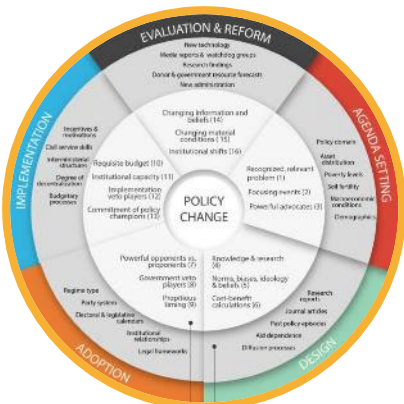
Trade liberalization



Modeling & foresight



Child & maternal nutrition



Political economy analyses



Informing public investments



Evaluating social protection



Capacity building

IFPRI@50: Impact measurement and reporting

- **Impact Assessment Report** covering 50 years of impact
- **IFPRI Making a Difference** brochure and blog series
- **GFPR Impact Chapter**
- **Where are they now?** Exercise: Tracking 1000+ alumni
- **Faces of IFPRI** and **50 Years of Innovation** social media campaigns
- **Testimonials** database



IFPRI's Strategic Approach

to impactful research and engagement
in a changing financial and knowledge landscape

Clarifying the
situation and
outlook



Testing, adapting,
and scaling diverse
solutions



Shaping enabling
environments



Strengthening
research methods
and building
capacity



A research plan for the future

- The **task** in the years ahead, as it was over the past five decades, for IFPRI and food policy researchers more generally, is to provide the evidence that supports effective policies to sustainably reduce poverty and end hunger and malnutrition.
- The **evolving knowledge and funding landscape** will require IFPRI to continuously evaluate and review its comparative advantage to efficiently provide the greatest positive impact in a changing world.
- The challenges that we face should be used as an **incentive and an opportunity** to question ourselves and our approach and to find ways to be more effective and impactful.
- But in 2025, after 50 years, **food policy research is central** to solving the world's food security and sustainability problems and **IFPRI's relevance** to these first-order global challenges has never been greater.



Download the book

