



INTERNATIONAL
FOOD POLICY
RESEARCH
INSTITUTE

2021 ANNUAL REPORT



Letter from the **BOARD CHAIR** and **DIRECTOR GENERAL**

2021 continued to pose great challenges for the world and for IFPRI, but in the face of these hurdles, the Institute and its partners continued undertaking and disseminating valuable research, and engaged with policymakers and stakeholders around the globe. In late 2020, IFPRI officially joined One CGIAR, the world's largest agricultural innovation network. Through One CGIAR, IFPRI is leading and partnering with others to implement large-scale global research initiatives and the agenda of the Systems Transformation science group, helping to address pressing problems – food insecurity, malnutrition, climate change, and poverty among the world's most vulnerable people.

As the COVID-19 pandemic continued, the Institute provided cutting-edge analysis of its health, social, and economic impacts. Researchers resumed field studies, employed novel computer and phone survey methods, advised organizations and governments, and widely communicated their results through events, publications that included an award-winning e-book, and media. IFPRI's virtual events were attended by a record-breaking 24,000 participants in 2021. The Institute also significantly contributed to major international events throughout the year, with a particularly sustained engagement in the run-up to the United Nations Food Systems Summit.

IFPRI has 526 staff members, representing 55 countries around the world. About half are based in the field, where they carry out research, communicate their results to key decision-makers, and build the capacity of individuals and local institutions to conduct pro-poor policy research. IFPRI's regional and country programs allow researchers to be at the forefront of national policy dialogues, with offices in Bangladesh, China, Egypt, Ethiopia, Ghana, India, Malawi, Myanmar, Nigeria, Pakistan, Rwanda, Senegal, and Uganda.

In 2021, IFPRI's researchers published 429 peer-reviewed publications, 11 books, and about 1,000 other publications. The Institute continues to hold the number one rank among all agricultural economics departments in the world, according to Research Papers in Economics (RePEc) rankings, and is also number two in African economics.

IFPRI remains financially sound. The Board of Trustees received another successful external audit of the Institute's finances and continues to provide strong governance oversight as well as approval of the Institute's long-range strategic plans.

We deeply thank retiring Board Chair Emorn Udomkesmalee for her dedicated leadership over the past years. In the coming year, IFPRI will continue the transition to One CGIAR, providing high-quality research not only on COVID-19 and the conflict in Ukraine, but also other long-term challenges on the horizon that threaten the food security, nutrition, livelihoods, and resilience of vulnerable people around the world, as well as the environment in which we all live. We look forward to advancing our research in new and innovative ways in 2022.

Derek Byerlee
Board Chair

Johan Swinnen
Director General

BOARD of **TRUSTEES**

Derek Byerlee,
IFPRI Board Chair, Australia

Djimé Adoum, Chad

Nancy Birdsall, USA

Phyllis Caldwell, USA

Marco Ferroni*, CGIAR System
Board Chair, Switzerland

Patrick Caron*, France

Shenggen Fan*, China

Neal Gutterson*, USA

Alyssa Jade McDonald-Baertl*,
Australia

Alice Ruhweza*, Uganda

Lindiwe Sibanda*, Zimbabwe

Hilary Wild*, United Kingdom/Ireland

**CGIAR System Board Members*

*All Board members serve on IFPRI's Strategy
and Program Council.*

Additional members of the Strategy and Program Council

Pascal Lamy, France

Anna Taylor, United Kingdom

IFPRI at Global Events

Food systems were in the global spotlight at the September 2021 UN Food Systems Summit, which brought worldwide attention to the critical role of food systems transformation in achieving multiple Sustainable Development Goals. IFPRI played a prominent role in the [Pre-Summit](#). IFPRI staff also led two of the [cross-cutting levers for change](#) – Finance and Gender – and served as participants for other levers; published a widely read [UNFSS blog series](#); organized many summit-related events; were commissioned to co-author seven [Scientific Group briefs](#) that helped to ensure that the Summit was grounded in the latest evidence; and spoke at the Summit on gender equity.

The Institute also participated in [events](#) held as part of the 2021 UN Climate Change Conference (COP26), including a heavily attended [panel](#) on the role of biotechnology and other agricultural innovations in transforming food systems. IFPRI staff were also deeply involved in the G20 Summit and associated activities, including the G20 Agricultural Ministers' meeting held in September. IFPRI researchers prepared several [Think20 \(T20\) papers](#) that address climate change and central banks, repurposing agricultural subsidies, financing food systems transformation, and reducing the vulnerability of women during short-term migration.

COVID-19 Response

As waves of the coronavirus continued to disrupt lives and food systems and roil economies around the world, IFPRI researchers worked to provide evidence, policy analyses, recommendations, and tools for researchers, policymakers, donors, and the public.

A [series of blog posts](#), co-edited by Director General Johan Swinnen and A4NH Director John McDermott, provided groundbreaking analyses of impacts on national and global food and nutrition security, poverty, and development. The series, initiated in 2020, has reached 59 blog posts, many gathered in a [new book](#), and cumulatively garnered over 300,000 views. IFPRI also continued to host a wide range of [virtual events](#) on COVID-19. [Web portals](#) developed to share up-to-date information on COVID-19 and on Food Security helped to inform policymakers. The [2021 Global Food Policy Report](#) focused on "Transforming Food Systems After COVID-19," reviewing lessons learned from the pandemic that can help address future shocks. This flagship report was launched in Washington, DC, in April 2021, and has since been promoted in nearly a dozen more locations around the world. A [special issue](#) of the *Journal of Agricultural Economics* on "COVID-19 Impacts on Global Food Systems and Household Welfare," co-edited by IFPRI leadership, featured key insights from IFPRI and other organizations on topics including poverty, food security, nutrition, food prices, and more, based on simulation models, value chain analyses, survey evidence, and other data from a host of new studies.



2021 Highlights from IFPRI's Strategic Research Areas

IFPRI's work is built around five strategic research areas, with cross-cutting attention to gender, that address the world's most critical food policy issues. To advance knowledge and practice across these strategic areas, IFPRI works in more than 70 countries and partners closely with public institutions, the private sector, nongovernmental organizations, governments, farmers' organizations, donor agencies, and research and academic institutions, as well as other CGIAR centers. In 2021, IFPRI not only continued with ongoing work but also began to transition to the One CGIAR, including the preparation of many innovative project and program proposals in collaboration other centers. The following are a few research highlights from 2021.

Fostering Climate-Resilient Sustainable Food Supply

Cost of offsetting climate-induced hunger. An [assessment](#) of the costs of climate change adaptation provided crucial insights for R&D investments. Climate change may push more than 70 million additional people into chronic hunger by 2050, but this could be avoided through increased investment in agriculture, water, and infrastructure.

Climate and child growth. A connection was shown between heat shocks, lower maize yields, and reduced child growth in Tanzania. This [empirical evidence](#) linking climate shocks with agricultural productivity and health has major implications for responding to climate threats.

Holistic approach. [Conservation agriculture](#) can improve cropping systems' adaptive capacity for climate stress. Using historical data on weather and yields from Malawi, researchers found that conservation agriculture reduced some of the negative yield impacts of heat stress in cropping systems.

Solar power and food security. Expanding irrigated agriculture could improve sub-Saharan Africa's food security, but groundwater-fed irrigation requires energy. A [comparison](#) of solar and diesel energy solutions provided useful insights into their cost-effectiveness for irrigation.

Adapting to crises. Climate change will decrease average agricultural yields in most countries. These yield declines will lead to market-mediated adjustments in production and trade, which will help reduce welfare losses globally, according to an [IFPRI-produced trade model](#).

Promoting Healthy Diets and Nutrition for All

Dietary diversity. About 70 percent of [India's rural poor could not afford a nutritious diet](#), per the most recently available household data. To improve nutrition, IFPRI researchers recommended that the full range of food groups, rather than just cereals, be made affordable for all.

Food supplementation. [Balanced energy-protein supplementation](#) is a promising strategy to cover nutritional requirements during pregnancy and improve birth outcomes. A study from rural Burkina Faso found that this type of supplementation increases energy and macro- and micronutrient intakes among pregnant women without displacing food intake.

Social assistance and health. A [review of the evidence](#) on whether social assistance programs can improve birth outcomes found some encouraging but low-certainty evidence. Potential pathways of impact include maternal diet, antenatal care utilization, and delivery in a health facility.

Women's time and nutrition. An [analysis of a nutrition-sensitive agriculture program](#) in Burkina Faso showed that the program increased the amount of time women spent on agriculture and improved maternal and child nutrition outcomes. The extra time spent by women had no negative effects on their own or their children's nutrition.

Building Inclusive and Efficient Markets, Trade Systems, and Food Industries

Nutritious diets out of reach. An analysis of [evidence from 177 countries](#) found that the cost of nutrient adequacy is 2.66 times the cost of subsistence daily energy, and longer rural travel times reduce the affordability of nutritious diets.

Food safety improvements. Training groundnut farmers in Ghana to prevent aflatoxin (a common food-safety hazard) significantly [improved postharvest practices](#), while other elements of the same intervention had more modest effects.

Social influence and risk-taking. A [study in rural Malawi](#) investigated the effect of social influence on risk-taking among farmers. Results showed that the decisions of peers are most influential, followed by formal leaders, followed by external leaders.

Domestic prices and foreign exchange. [Value chain research](#) found that coffee exporters in Ethiopia are willing to offer high prices for coffee locally, even if they incur losses, in order to access scarce foreign exchange. These high wholesale prices benefit coffee farmers.

Low-cost loans in India. The provision of low-cost loans through self-help groups in Bihar, India, reduced the use of informal credit and lowered interest rates, but the short-term impact on economic well-being is still modest, [IFPRI research](#) showed.

Strengthening Institutions and Governance

Factors in food security. An [investigation](#) of socio-economic drivers of food security in rural Nigeria used data from 250 smallholder maize farming households. It highlighted the need for greater government efforts to increase both land productivity and farmers' participation in new safety net programs to improve food security.

Trust in government. [Evidence from Africa](#) showed that mistrust in local and national governments is a major barrier to child vaccination progress. This evidence came at a crucial time as the continent, and much of the world, battles COVID-19.

Women's voices. A civil society organization (CSO) [mapping project in Mali](#) explored gender dynamics, finding that women have substantial coordinating capacity and social capital in many types of CSOs. Further efforts to translate women's participation into collective agency and political engagement that holds governments accountable were recommended.

Social connections and investment. Using records of business registrations in China, researchers found that the bureaucratic transfer of a local leader to another city was associated with a significant increase in interregional investment in the new location. These [findings](#) demonstrate the influence of personal connection between firms and bureaucrats.

Transforming Agricultural and Rural Economies

Rigorous monitoring. IFPRI researchers and more than 40 colleagues from around the world proposed a [framework](#) for rigorous, science-based monitoring to guide public and private decisions on food systems transformation. Monitoring the whole of food systems is essential to support the immediate course corrections required to meet the Sustainable Development Goals.

Off-farm employment. Rural Bangladesh has been undergoing a shift from predominantly agricultural employment to increased nonfarm employment according to an [IFPRI study](#). This is not due to rural-urban migration, but rather to a shift away from agriculture within rural areas.

Urban growth and migration. [Analyzing nighttime light intensities](#) and survey data, researchers found that urban growth encourages migration among young people in Nigeria.

Reasons to relocate. [Research in Mali](#) found that men tend to migrate for employment, whereas women move to rural areas for marriage and urban areas for employment. Cash transfers may encourage men to move beyond subsistence agriculture, but may also affect women's marriage-related migration.

Cross-Cutting Theme on Gender

Empowerment trade-offs. A [study in six countries](#) found that women's empowerment and gender equality are positively associated with children's height-for-age, but there are trade-offs between domains of empowerment and women's nutritional outcomes: a higher workload is associated with more diverse child diets but lower women's BMI.

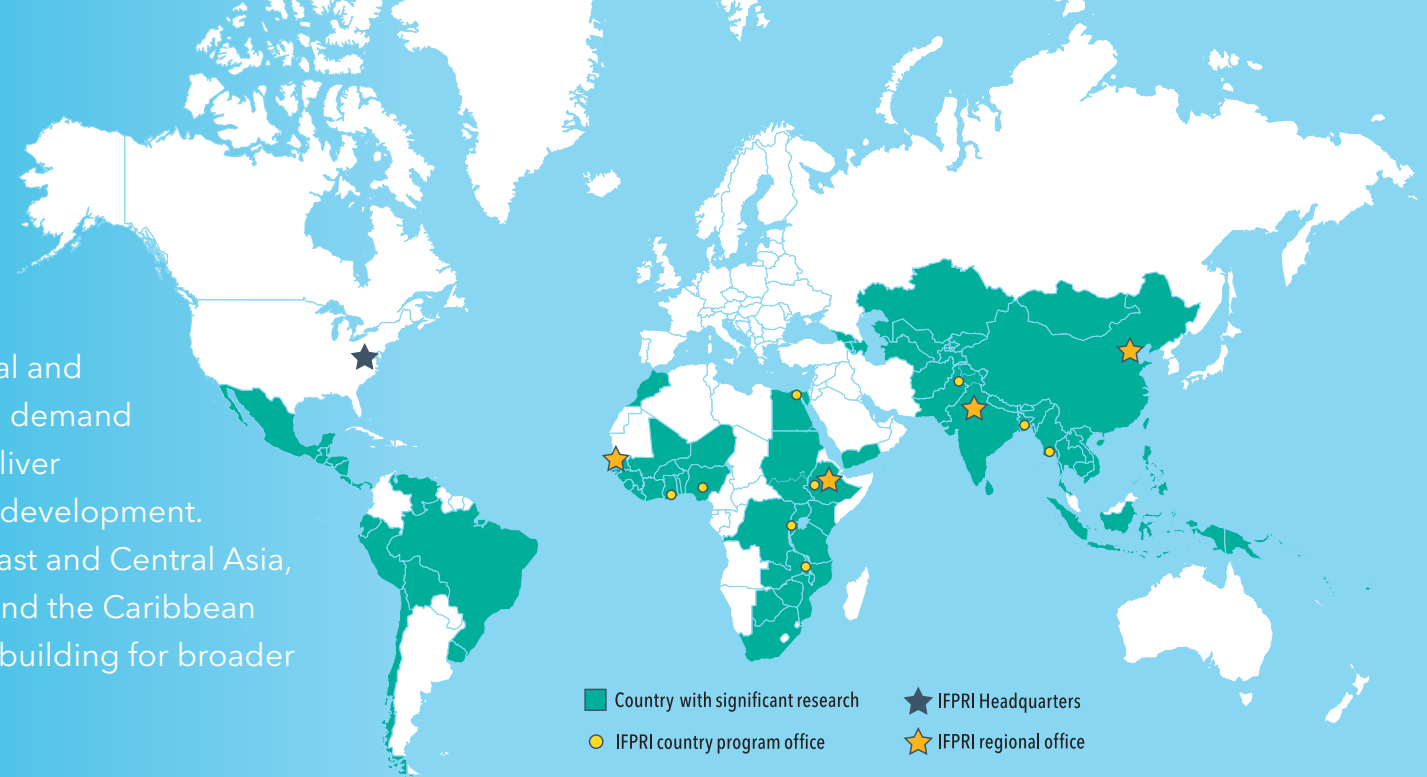
Gender equality and research. IFPRI and the CGIAR Research Program on Policies, Institutions, and Markets published [Advancing Gender Equality through Agricultural and Environmental Research](#). With a wide-ranging review of gender and agriculture, the book upends customary analyses to ask, How do agricultural and environmental research and development contribute to gender equality and women's empowerment?

Lockdown losses. [Phone surveys](#) during COVID-19 conducted in India and Nepal revealed a decline in women's already low formal access to extension and an increased reliance on informal sources for information. As a result, agricultural productivity for almost 50 percent of farmers decreased.

Learning from games. A [study using public-goods games](#) in Senegal showed that spouses who are more efficient in the games have smaller gender gaps in milk production (indicating higher efficiency), but report less collaborative decision-making. This suggests that collaborative decision-making is not necessary for efficiency.

Around the World

IFPRI maintains a strong regional and country presence to respond to demand for food policy research and deliver holistic support for country-led development. Regional programs for Africa, East and Central Asia, South Asia, and Latin America and the Caribbean provide evidence and capacity building for broader development efforts.



Bangladesh. [IFPRI analysis](#) of two decades of survey data in [Bangladesh](#) found that children born to adolescents had lower height and weight for age, as well as higher rates of stunting and underweight than those born to adults.

Burkina Faso. A [study of women's and children's micronutrient levels](#) in rural [Burkina Faso](#) found that urgent action is needed to improve micronutrient intakes among pregnant and breastfeeding women.

Burundi. A [food-assisted maternal and child health program](#) to reduce wasting in [Burundi](#) proved most successful for children between 6 and 12 months old from the most disadvantaged households.

Egypt. An [analysis of the impacts](#) likely from climate change in [Egypt](#) found that accelerated investment in adaptation measures is essential to avoid worst-case scenarios of falling food production.

Ethiopia. To understand impacts of the pandemic on value chains, researchers in [Ethiopia](#) assessed [changes in the farm and consumer prices](#) for major vegetables, finding large but heterogeneous price changes and overall resilience of the value chains.

Ghana. A [study of pond aquaculture](#) in [Ghana](#) shed light on how COVID-19 affected fish farmers, and made recommendations for accelerating aquaculture development and improving the sector's competitiveness and resilience.

India. The children of women who had participated in [India's](#) primary school Mid-Day Meal scheme were found to show improved linear growth – evidence of [intergenerational health benefits](#) of free school meals.

Kyrgyzstan. In [Kyrgyzstan](#), young and older children exposed to [reductions in predicted household income](#) showed declines in health and nutrition, while overweight and obesity decreased among adults.

Malawi. IFPRI researchers provided positive evidence of the effectiveness of a [payment-for-ecosystem-services program](#) to encourage soil conservation agriculture practices in [Malawi](#).

Myanmar. The [poultry sector](#) in [Myanmar](#) was severely disrupted by COVID-19, causing a drop in employment rates, but layer farms that combine chicken and fish production proved more resilient than those with just chickens.

Nigeria. Transforming food systems in [Nigeria](#) for healthier diets will require a paradigm shift that puts consumers and their diets at the center of policymaking, according to [IFPRI research](#).

Rwanda. [Food prices](#) did not change significantly in [Rwanda](#) during the COVID-19 pandemic, suggesting that households were not hit by the “double whammy” of decreased incomes and rising food prices, but still underlined the need to expand Rwanda’s social protection programs.

Viet Nam. Child linear growth during and beyond the first 1000 days of life is associated with better intellectual functioning and mental health in early school-age children, according to [research findings](#) in [Viet Nam](#).

Yemen. [Cash transfers](#) were shown to have long-term nutritional benefits in [Yemen](#)’s humanitarian crisis. The Cash for Nutrition intervention, which targeted households with young children, improved consumption patterns and dietary diversity, especially for the poorest households.

IFPRI and CGIAR

IFPRI researchers made substantial contributions to the ongoing One CGIAR transition in 2021, developing proposals for major new [research initiatives](#) that will take advantage of synergies and complementarities within and across the new CGIAR Science Groups. IFPRI staff are leading or co-leading 9 of 11 research initiatives housed under the Systems Transformation Science Group.

Two CGIAR Research Programs led by IFPRI were brought to a close in 2021: [Policies, Institutions, and Markets](#) (PIM) and [Agriculture for Nutrition and Health](#) (A4NH). IFPRI staff have worked to ensure that the major body of research results from these programs will be shared widely, and that critical research streams will continue under the One CGIAR.

Following on the work of PIM, IFPRI researchers are taking a leading role in ambitious [CGIAR initiatives](#) on transformation of food, land, and water systems, foresight and metrics, markets and value chains, and gender and inclusion. Research conducted under A4NH will carry on in the CGIAR’s new Nutrition, Health, and Food Security Action Area, as well as several initiatives on sustainable healthy diets. Additional Systems Transformation initiatives led and co-led by IFPRI staff will conduct policy research on digital transformation, national systems transformations strategies, and mitigation of climate change through agrifood systems.



IFPRI *in* 2021

MEDIA



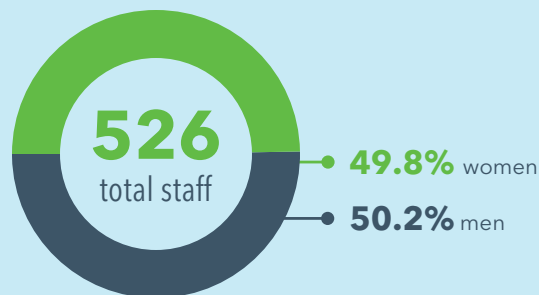
PROFESSIONAL RANKINGS

- #1 in Agricultural Economics Departments
- #1 in the field of Agricultural Economics
- #2 in the field of Africa
- #4 in the field of Development

PUBLICATIONS

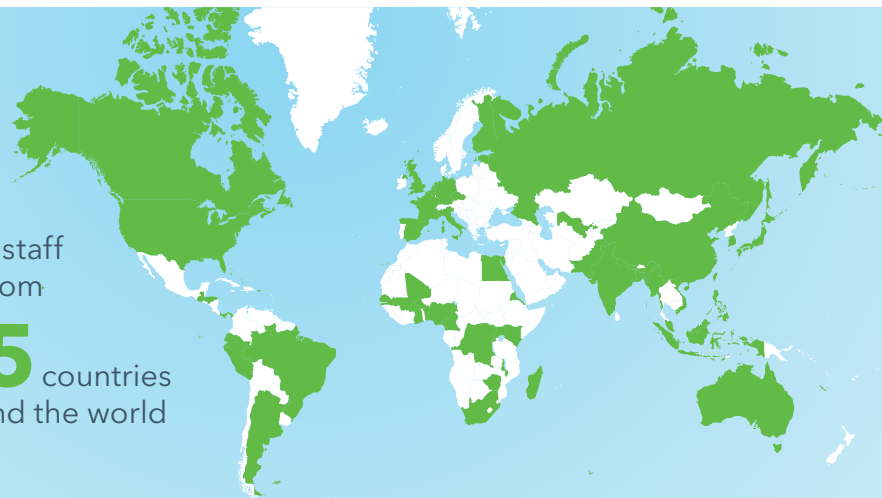


IFPRI STAFF



258 outposted staff, local hires, and telecommuters

IFPRI staff are from 55 countries around the world



2021 and 2020 FINANCIAL STATEMENTS

STATEMENTS OF FINANCIAL POSITION (in US\$ thousands)

	2021	2020
ASSETS		
Cash and cash equivalents	24,962	28,852
Investments	87,805	86,707
Advances, prepaids, and other assets, net	8,021	9,200
Accounts receivable, net	18,336	16,153
Total current assets	139,124	140,912
Property and equipment, net	5,904	6,961
Total assets	145,028	147,874
LIABILITIES AND NET ASSETS		
Accounts payable and accrued expenses	11,956	5,272
Accrued vacation	4,061	3,941
Advance payment of CGIAR grant funds	2,299	11,061
Unexpended project funds	44,977	44,719
Amount held for HarvestPlus program	31,505	30,506
Total current liabilities	94,798	95,499
Deferred rent	12,266	13,350
Accrued post-retirement benefits	5,646	5,918
Total liabilities	112,710	114,767
NET ASSETS WITHOUT DONOR RESTRICTIONS		
Board-designated	422	449
Undesignated	24,095	25,563
Other net assets	7,801	7,095
Total net assets without donor restrictions	32,318	33,107
Commitments and contingencies		
Total liabilities and net assets	145,028	147,874

STATEMENTS OF ACTIVITIES (in US\$ thousands)

	2021	2020
REVENUES AND GAINS		
Windows 1 & 2	42,553	35,927
Window 3	30,456	38,073
Bilateral	42,930	39,358
Total revenues and gains	115,939	113,358
EXPENSES AND LOSSES		
Research expenses	52,668	55,875
CGIAR collaborator expenses	22,104	19,790
Non-CGIAR collaborator expenses	28,737	25,310
General and administration expenses	14,319	14,030
Other expenses and losses	175	1,118
Total expenses and losses	118,003	116,123
Operating surplus (deficit)	(2,064)	(2,765)
FINANCIAL INCOME AND EXPENSES		
Financial income	966	1,202
Financial expenses	(397)	(482)
Surplus for the year	(1,495)	(2,045)
OTHER CHANGES IN NET ASSETS		
Unrealized gain (loss) on investment	444	2,251
Post-retirement related changes	262	271
Other changes in net assets	706	2,522
CHANGE IN NET ASSETS WITHOUT DONOR RESTRICTIONS	(789)	477

Note: The above is a summary of the financial information for the 2021 and 2020 calendar years. The full statements are available on the IFPRI website (IFPRI.org)

2021 FINANCIAL CONTRIBUTORS and PARTNERS

IFPRI greatly appreciates the donors who supported IFPRI's research through their contributions to the CGIAR Fund, <https://www.cgiar.org/funders/>, without which our work would not be possible. Other donors supporting IFPRI's work are listed below.



African Union	Bureau for Food and Agricultural Policy, South Africa	Economic and Social Research Council (ESRC), United Kingdom
Agence Française de Développement	Canada	European Commission
Agriculture and Climate Risk Enterprise Ltd. (ACRE)	CARE, Malawi	Felix Instruments - Applied Food Science, United States
AKADEMIYA2063 (A2063)	Centre for Agriculture and Bioscience International (CABI), United Kingdom	FHI 360, United States
Alliance for a Green Revolution in Africa (AGRA)	Centre for Economic and Policy Research (CEPR), United Kingdom	Fondation Botnar, Switzerland
American Seed Trade Association	CGIAR Fund	Food and Agriculture Organization of the United Nations (FAO)
Anonymous	China	George Mason University, United States
Asian Development Bank	Columbia University, United States	Georgia State University
Australian Centre for International Agricultural Research (ACIAR)	Context Global Development, United States	German Federal Ministry of Economic Cooperation and Development (BMZ)
Australian Department of Foreign Affairs and Trade (DFAT)	Cornell University, United States	German Society for International Cooperation (GIZ) GmbH
Australian National University	CPCS Transcom Limited, Canada	Global Alliance for Improved Nutrition (GAIN), Switzerland
Bangladesh	CropLife International, Belgium	Government of Flanders, Belgium
Bayer AG, Germany	Deutsche Welthungerhilfe, Germany	HereWeGrow, Germany
Belgium	Digital Green, United States	
Bill & Melinda Gates Foundation, United States	EAT Foundation, Norway	

India	Johns Hopkins University, United States	Population Council, United States	United States General Services Administration
Institute of Development Studies, United Kingdom	London School of Economics and Political Science (LSE), United Kingdom	Pulse Canada	University of California, United States
Inter-American Development Bank	Madagascar	Research Triangle Institute (RTI) International, United States	University of Connecticut, United States
Intergovernmental Authority on Development (IGAD)	Mahalanobis National Crop Forecast Centre (NCFC), India	The Rockefeller Foundation, United States	University of Florida, United States
International Center for Tropical Agriculture (CIAT)	Management Systems International, United States	Russian Federation	University of Georgia, United States
International Crops Research Institute for the Semi-Arid Tropics (ICRISAT)	Mathematica, United States	SAARC Agricultural Centre (SAC)	University of Ghent, Belgium
International Development Research Centre (IDRC)	Max und Ingeburg Herz Stiftung, Germany	Save the Children, United States	University of Manchester, United Kingdom
International Fund for Agricultural Development (IFAD)	Michigan State University, United States	South Africa	University of Maryland, United States
International Initiative for Impact Evaluation (3ie)	Millennium Challenge Corporation, United States	Stichting Coffee and Agronomy Training Foundation (CAT Foundation), Netherlands	University of Nottingham, United Kingdom
International Institute for Sustainable Development, Canada	Ministry of Agriculture and Irrigation, Peru	Sweden	University of Oxford, United Kingdom
International Institute of Tropical Agriculture (IITA)	Ministry of Agriculture, Democratic Republic of Congo	Switzerland	University of South Carolina, United States
International Livestock Research Institute (ILRI)	Netherlands Organisation for Scientific Research (NWO)	SYSTEMIQ, United Kingdom	University of Washington, United States
International Maize and Wheat Improvement Center (CIMMYT)	Nutrition International, Canada	Target Foundation, United States	Wageningen Centre for Development Innovation, Netherlands
International Potato Center (CIP)	Overseas Development Institute, United Kingdom	Tetra Tech, Inc., United States	Wageningen University, Netherlands
International Water Management Institute (IWMI)	Oxford Policy Management, United Kingdom	Texas A&M University (TAMU), United States	Walmart Foundation, United States
INVEST-Honduras/Inversión Estratégica de Honduras	Partnership for Economic Policy (PEP)	Texas State University, United States	World Bank
Iowa State University, United States	PATH, United States	Tufts University, United States	World Food Programme (WFP)
Ireland	Permanent Interstate Committee for Drought Control in the Sahel (CILSS)	U.S. Embassy, Ethiopia	World Vision, United States
Japan		UN Environment Programme (UNEP)	WorldFish Center
		UNICEF	
		United Kingdom	
		United Nations Economic Commission for Africa	
		United States Agency for International Development (USAID)	
		United States Department of Agriculture (USDA)	



INTERNATIONAL
FOOD POLICY
RESEARCH
INSTITUTE

IFPRI

INTERNATIONAL FOOD POLICY RESEARCH INSTITUTE

A world free of hunger and malnutrition

IFPRI is a CGIAR Research Center

IFPRI Headquarters

1201 Eye Street NW, 12th floor
Washington, DC 20005 USA
Phone: +1-202-862-5600
Fax: +1-202-862-5606
Email: ifpri@cgiar.org

IFPRI Africa

Almadies, Parcelles 22
Zone 10, Lot 227
Dakar, Senegal
Phone: +221-33-869-98-00
Email: ifpri-dakar@cgiar.org

IFPRI South Asia

Block C, NASC Complex, DPS Marg
Opposite Todapur, Pusa
New Delhi 110012
India
Phone: +91-11-66166565
Fax: +91-11-66781699
Email: ifpri-newdelhi@cgiar.org

Copyright 2022 International Food Policy Research Institute. All rights reserved. Contact ifpri-copyright@cgiar.org for permission to republish.

www.ifpri.org | www.ifpri.info

Photo credits: Sai Kyan Mine / Shutterstock | Moma_Production / Shutterstock | Tim Gainey / Alamy Stock Photo

DOI: <https://doi.org/10.2499/9780896294325>