

### Major achievements

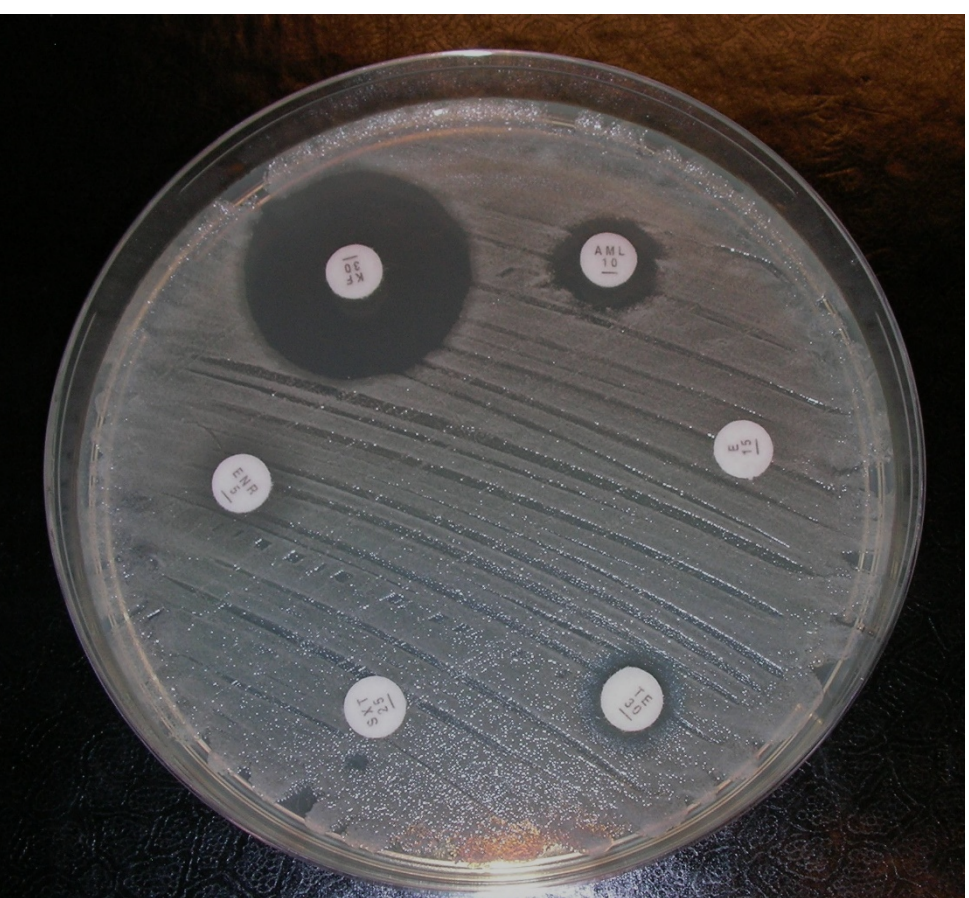
- Capacity needs assessment completed by VSFG
- Stakeholder mapping completed by VSFG
- Development of PhD concept notes

### Major challenges

- COVID-19
- Procurement difficulties
- Delayed recruitment



E.coli on a plate



Antibiotic suscep. test

### Cross component collaboration

Build AMR and VPH

- Sharing of laboratory protocols
- Potential for additional collaborations since bacteriologic analyses will be conducted in the same labs at NaLIRRI and NADEC

Funded by



# BUILD-AMR: Mitigating agriculture-associated antimicrobial resistance in poultry value chains in Uganda

B. Wieland<sup>1</sup>, A.Moodley<sup>1</sup>, I. Mbatidde<sup>1,2</sup>, D. Ndoboli<sup>1,2</sup>, B-A Tenhagen<sup>3</sup>, U.Roesler<sup>4</sup>, R. Erechu<sup>5</sup>, A. Litta-Mulondo<sup>6</sup>, S. Kakooza<sup>7</sup>, J. Waiswa<sup>7</sup> and C. Kankya<sup>2</sup>

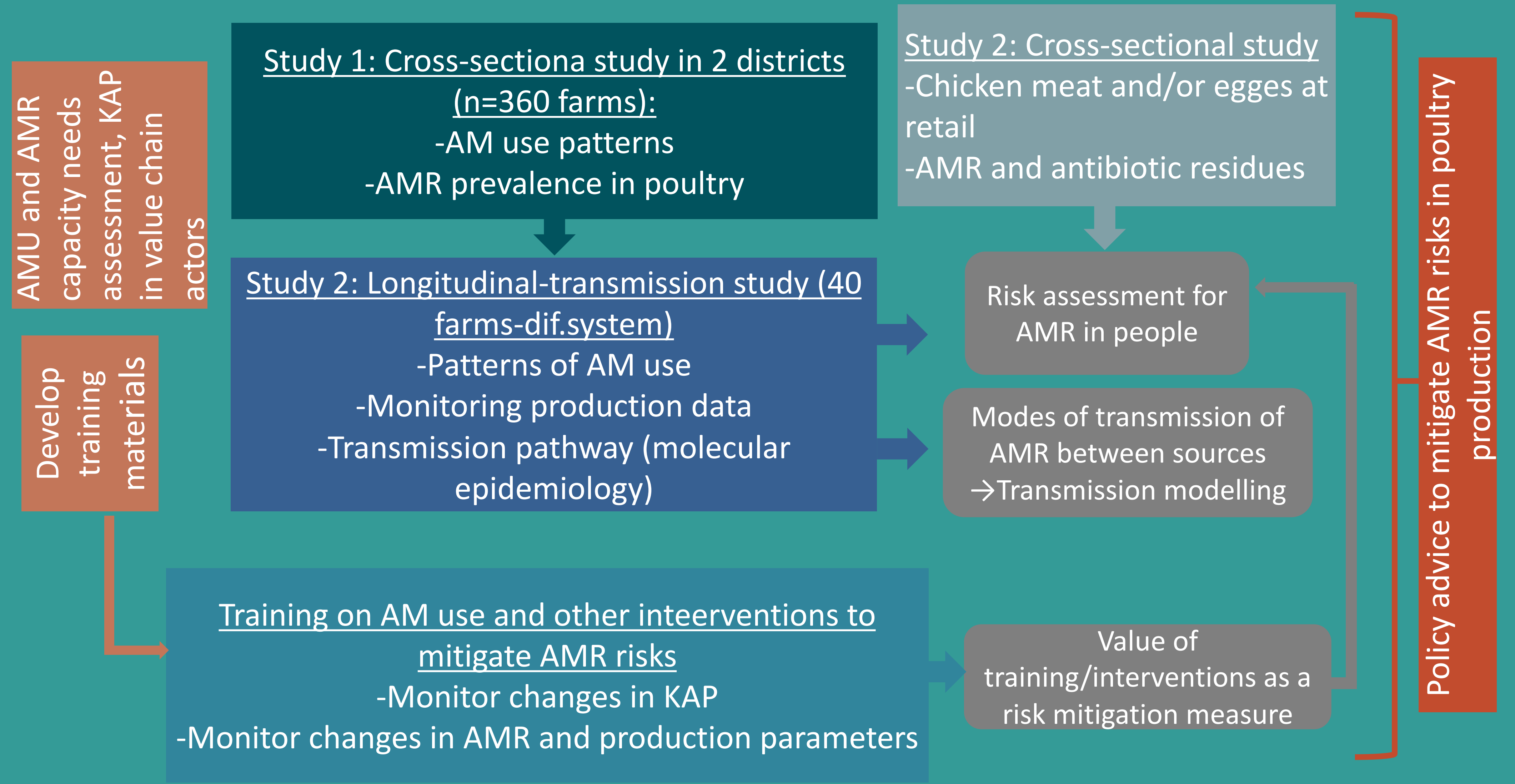
<sup>1</sup>International Livestock Research Institute; <sup>2</sup>Makerere University; <sup>3</sup>Federal Institute for Risk Assessment (Bfr); <sup>4</sup>Freie Universität Berlin; <sup>5</sup>National Animal Disease Diagnostic and Epidemiology Centre; <sup>6</sup>National Livestock Resources Research Institute; <sup>7</sup>VSF Germany

**Problem:** Antimicrobial resistance is a global One Health challenge, top ten human health threat by WHO (2019), disproportionate burden in low- and middle-income countries

**Challenge:** Limited national data AMU and AMR in LMICs  
 → difficult to evaluate livestock associated AMR risks and identifying risk pathways contributing to AMR in humans in LMICs.  
 → no baseline data to measure success of AMR mitigating interventions.

**Approach:**  
 → cross-sectional studies to identify AMR risks  
 longitudinal study to investigate temporal dynamics and transmission pathways  
 → risk assessment to evaluate risks  
 → identify interventions to reduce AMU

Graphical representation of the AMR studies, outputs and outcomes



Scan to find out more



### Activities completed since June 2019

- Recruitment of two PhD fellows and a Research Assistant



PhD Dickson Ndoboli



PhD Irene Mbatidde



Dreck Ayebare

- NaLiRRI's new lab is functional with new equipment to boost capacity for analyses
- VSFG recruited a staff for AMR component



S. Kakooza

### Outputs since June 2019

- Capacity needs assessment
- Stakeholder mapping
- PhD concept notes