

Climate change, trade and animal health

STDF Event on Linkages Between Climate Change and SPS Issues

STDF Secretariat in Collaboration with OIE And FAO

Climate Change and Animal Health

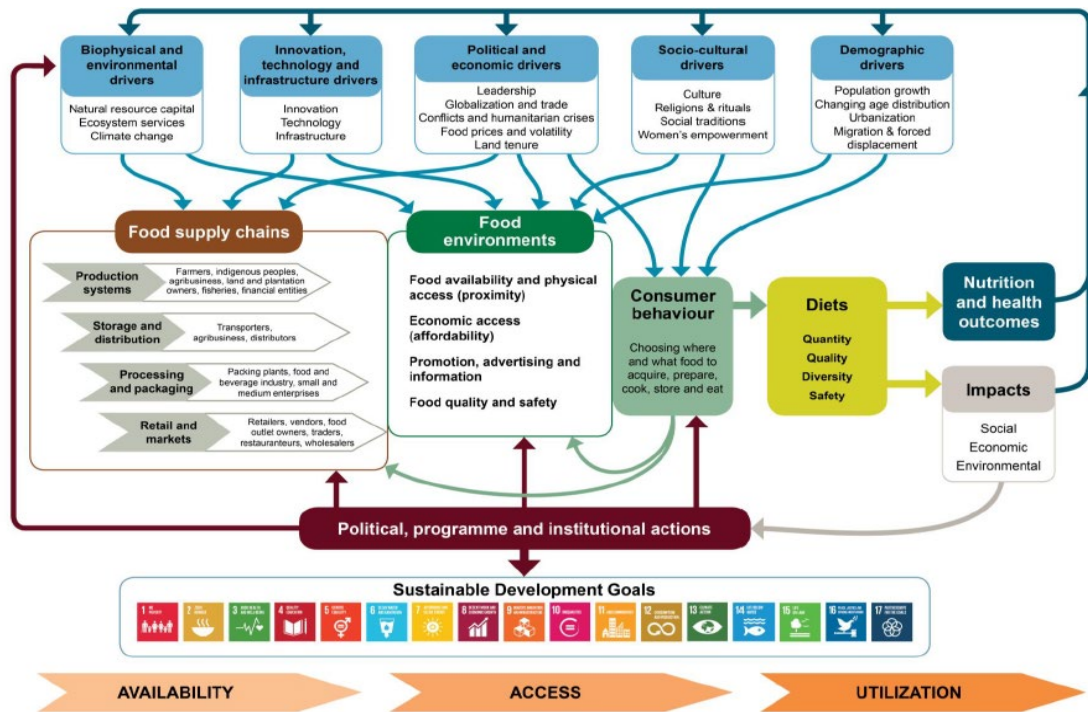
3 May 2022

Delia Grace

Professor Food Safety Systems, Natural Resources Institute, University of Greenwich, Central Avenue, Chatham Maritime, Kent ME4 4TB. UK
Joint appointed scientist, Animal and Human Health Program, International Livestock Research Institute, Box 30709, Nairobi, Kenya

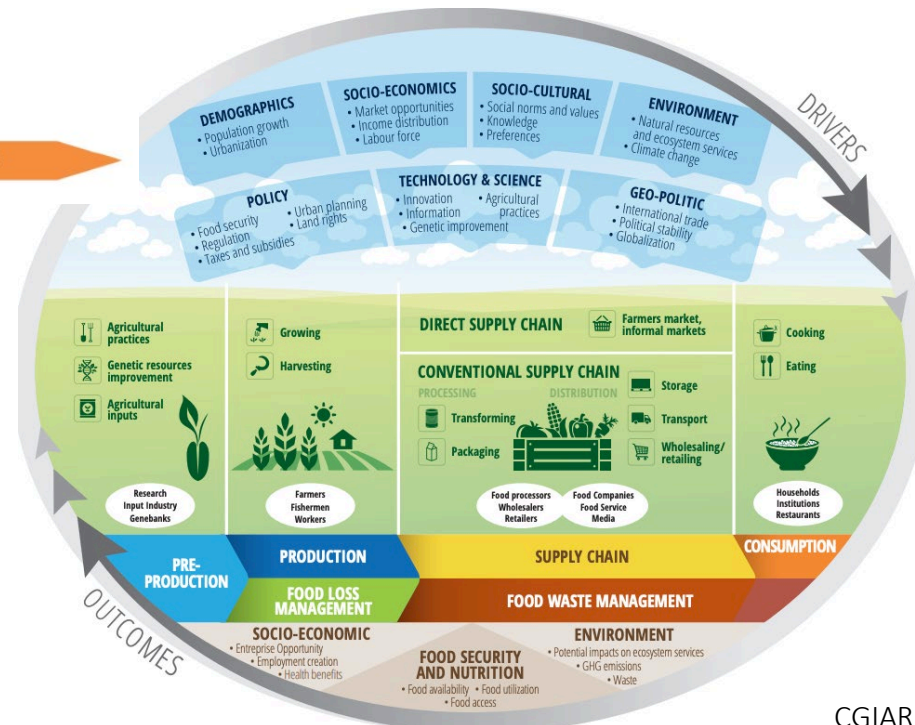


Food systems for health and nutrition



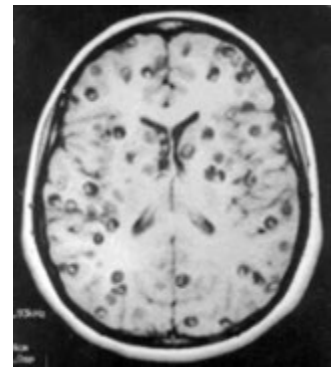
HLPE 2017 Food Systems and Nutrition Report

Triple burden



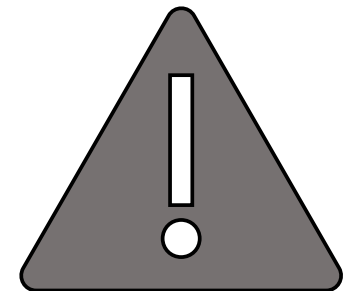
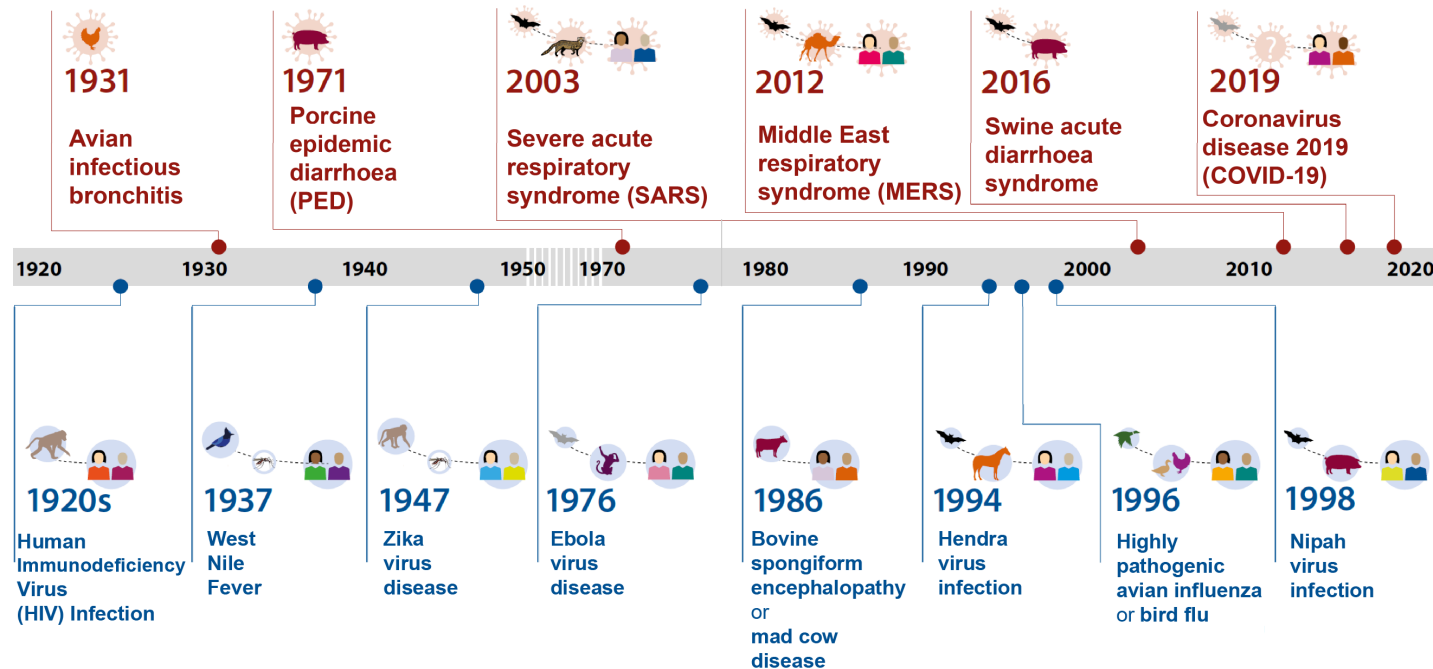
Zoonoses: neglected and emerging

- Neglected zoonoses: *brucellosis*, *bovine tuberculosis*, *leptospirosis*, *Rift Valley fever*
- Emerging zoonoses: *mad cow*, *bird flu*, *SARS*, *MERS*, *COVID-19*



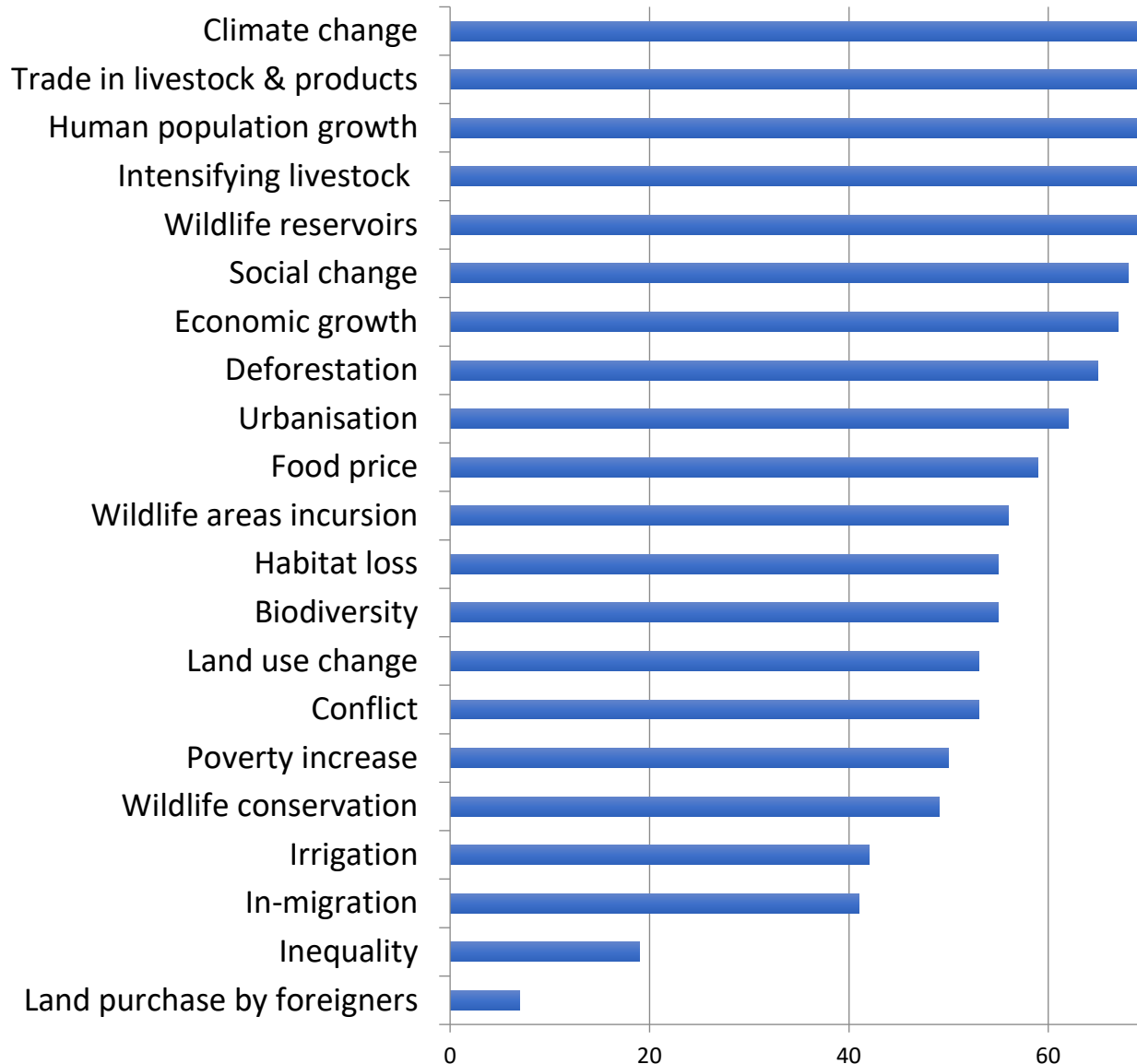
Warning! Increasing frequency of pandemics

Emergence of significant diseases caused by coronaviruses and other pathogens



Graphics: Annabel Slater, ILRI; adapted from United Nations Environment Programme and International Livestock Research Institute (2020). Preventing the Next Pandemic: Zoonotic diseases and how to break the chain of transmission. Nairobi, Kenya.

These trends have important drivers



PREVENTING THE NEXT PANDEMIC

Zoonotic diseases and how to break the chain of transmission

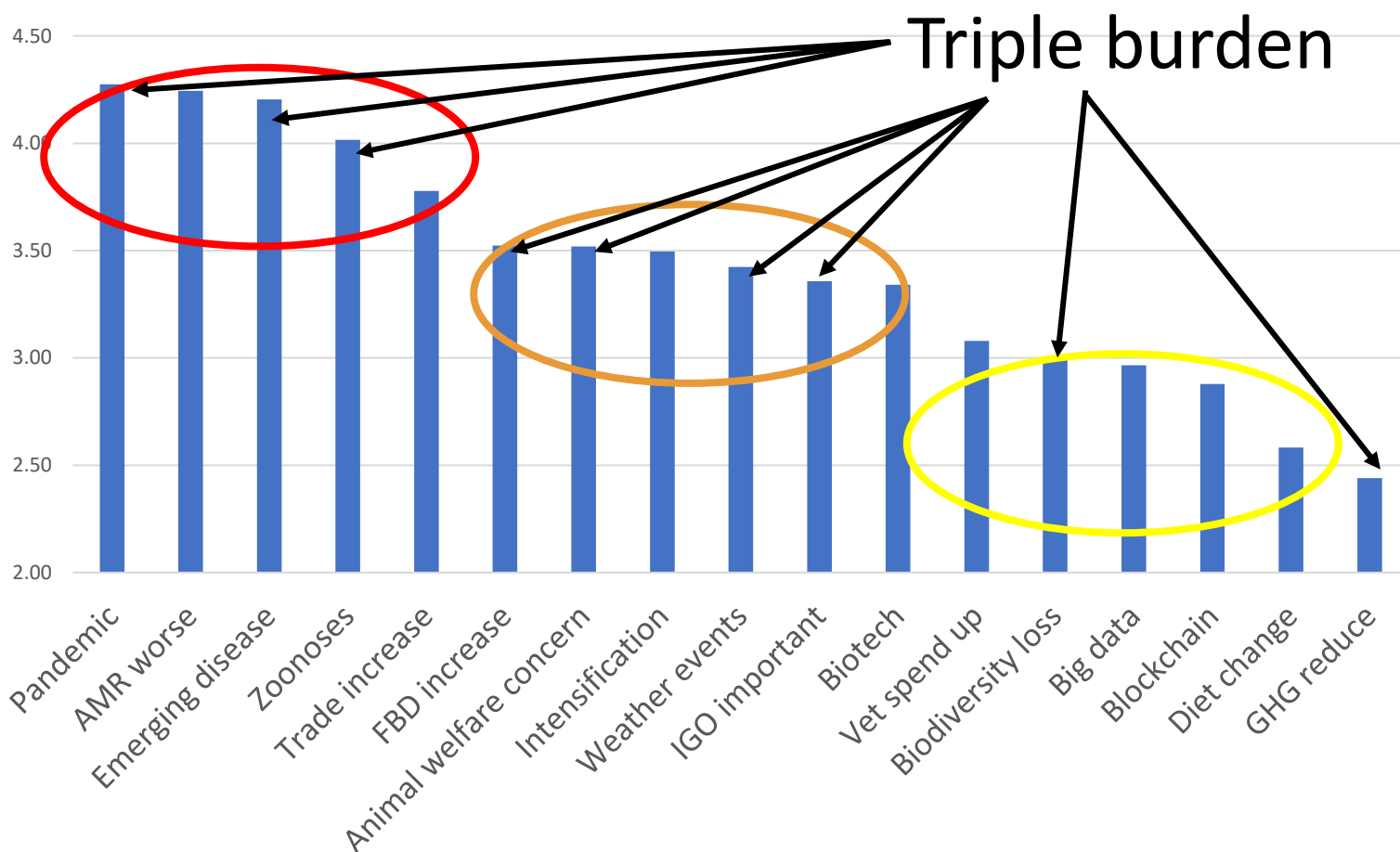


A Scientific Assessment with Key Messages for Policy-Makers
A Special Volume of UNEP's Frontiers Report Series

External Factors Important For Vet Services

Member
Country
perspective

*0 is no
importance
5 is maximum
importance*

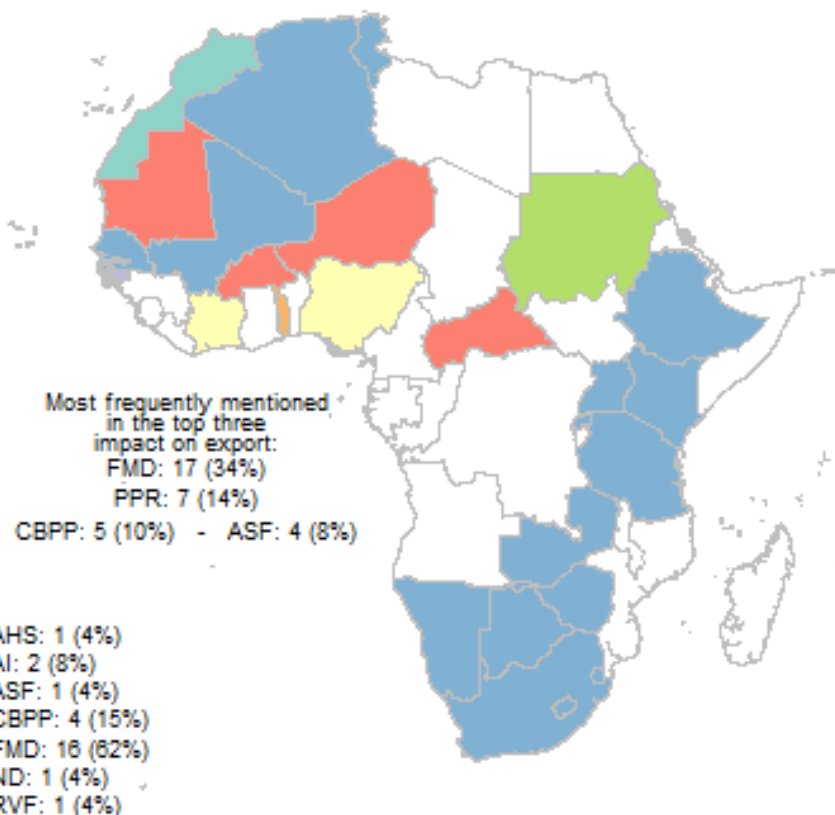


AH impacts on trade

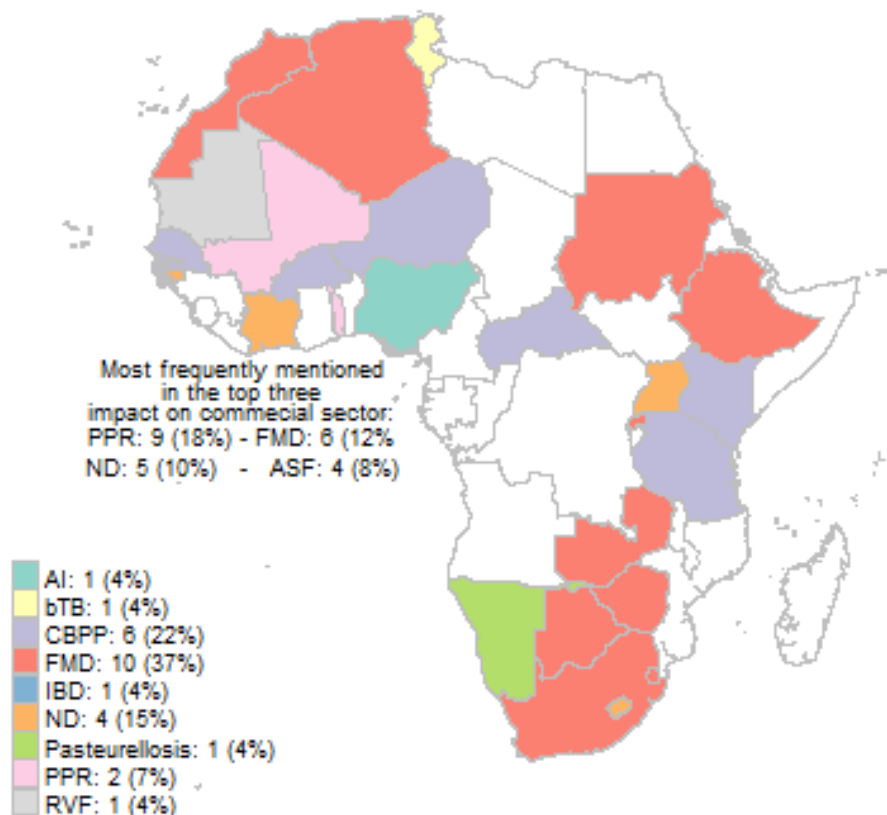
21st Conference of the OIE Regional commission for Africa,
16th-20th February, 2015, Rabat, Morocco

D Grace et al.

Greatest impact on export

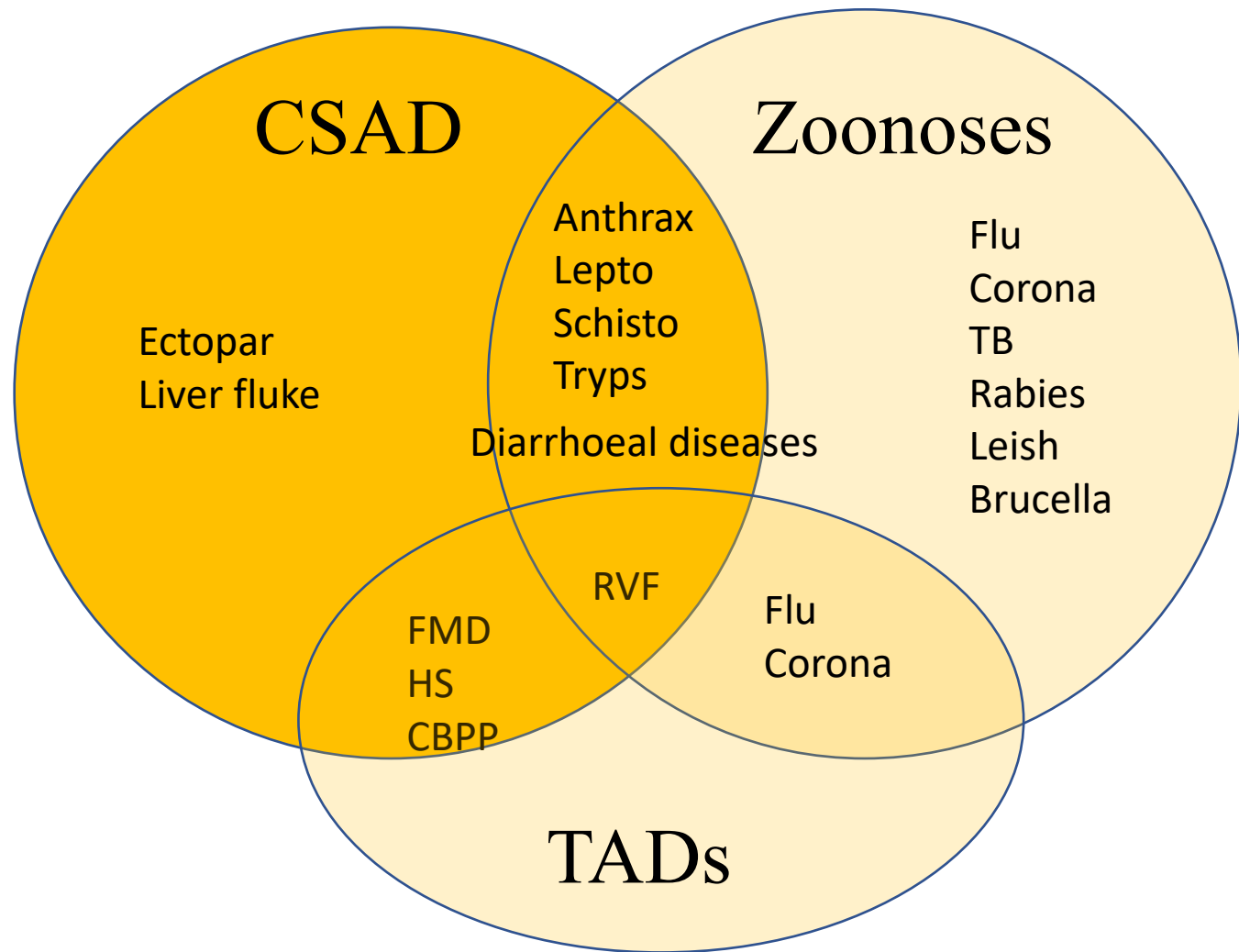


Greatest impact on internal trade



Trade, climate change and animal health

Triple
burden



Climate Sensitive Animal Disease – CCAFS/ILRI

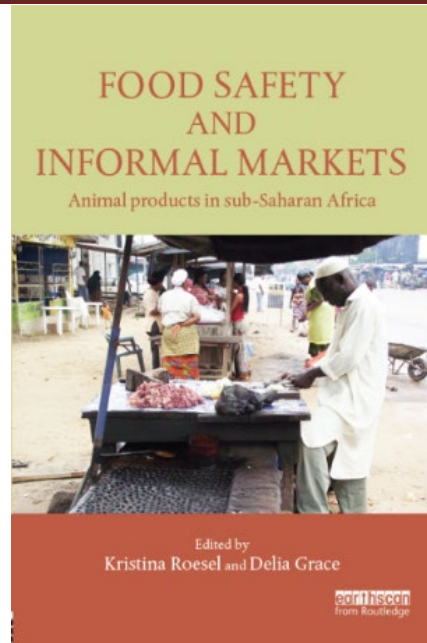
Top zoonoses – ILRI

Transboundary animal diseases – EMPRES, FAO

Initiatives related to AH, CC, trade

- 2020 GBADs launched
- 2020 OHRECA launched: zoonoses, FBD, AMR
- 2020 AU SPS Policy Framework and Animal Health Strategy for Africa endorsed
- 2021 AfCFTA - 55 member states – enacted
- 2022 COHESA – 11 countries - launched
- 2022 Animal Health Systems Facilitating Trade within the African Union launched

Acknowledgements and Further Reading



Climate and livestock disease: assessing the vulnerability of agricultural systems to livestock pests under climate change scenarios

Working Paper No. 116

CGIAR Research Program on Climate Change,
Agriculture and Food Security (CCAFS)

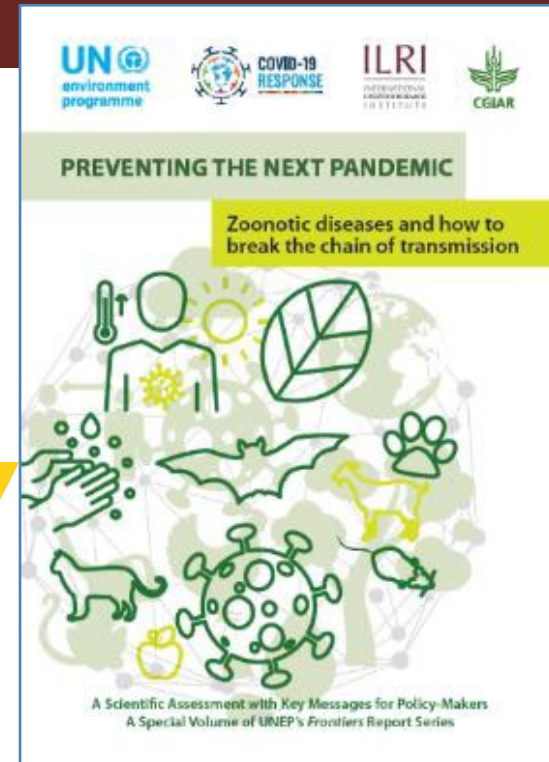
Delia Grace
Bernard Bett
Johanna Lindahl
Timothy Robinson



RESEARCH PROGRAM ON
Climate Change,
Agriculture and
Food Security




Working Paper





ILRI
INTERNATIONAL
LIVESTOCK RESEARCH
INSTITUTE



The International Livestock Research Institute (ILRI) is a non-profit institution helping people in low- and middle-income countries to improve their lives, livelihoods and lands through the animals that remain the backbone of small-scale agriculture and enterprise across the developing world. ILRI belongs to CGIAR, a global research-for-development partnership working for a food-secure future. ILRI's funders, through the [CGIAR Trust Fund](#), and its many partners make ILRI's work possible and its mission a reality. Australian animal scientist and Nobel Laureate Peter Doherty serves as ILRI's patron. You are free to use and share this material under the Creative Commons Attribution 4.0 International Licence .

*better lives
through
livestock*

ilri.org