



Delia Grace^{1,2}, Alexandre Caron^{3,4}, Margaret Karembu⁵, Bibiana Iraki⁵, H  l  ne De Nys⁴, Eric M. F  vre^{1,7},
Shauna Richards¹, Theo Knight-Jones¹

⁷Institute of Infection, Veterinary and Ecological Sciences, University of Liverpool, Liverpool UK



Inaugural Africa One Health Network (AfOHNet) workshop
3–7 October 2022
Accra, Ghana

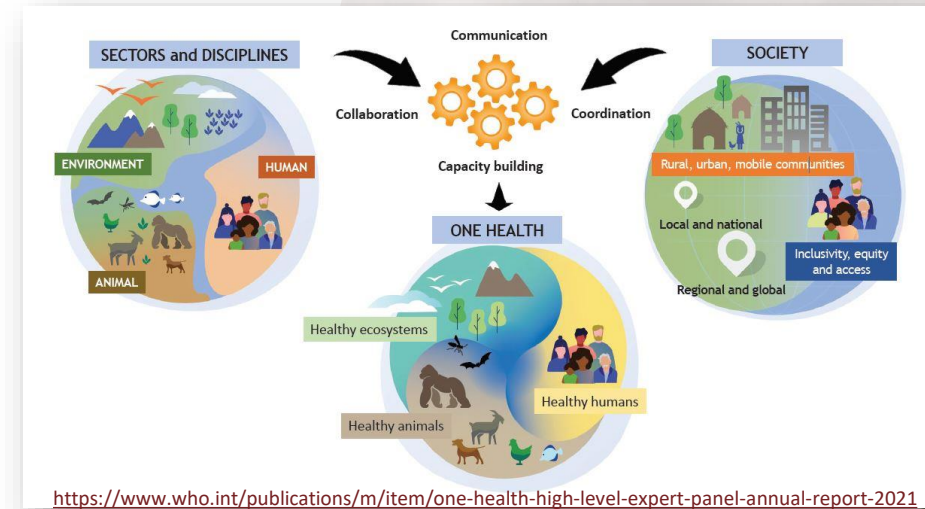
One Health

“ One Health is an integrated, unifying approach that aims to sustainably balance and optimize the health of people, animals and ecosystems.

It recognizes the health of humans, domestic and wild animals, plants, and the wider environment (including ecosystems) are closely linked and interdependent.”

OHHLEP, 2021

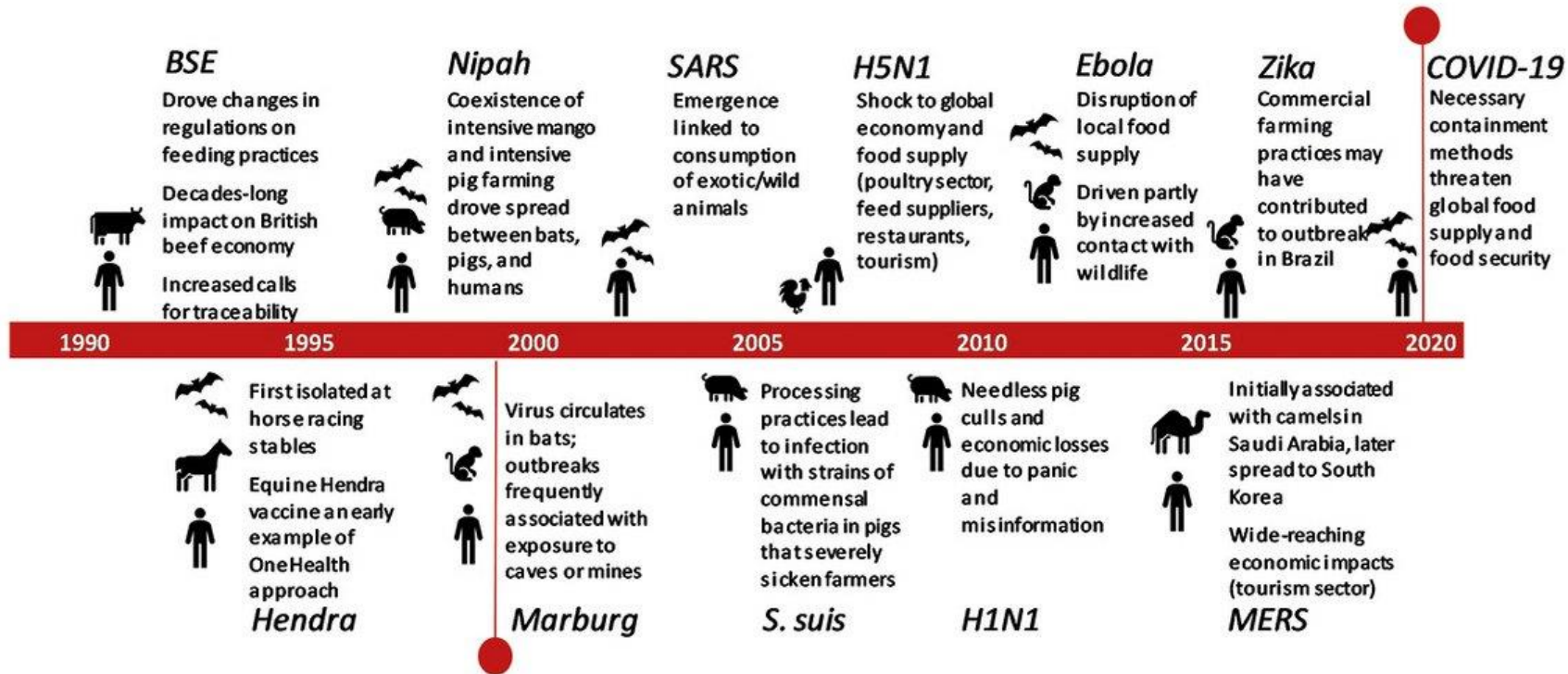
<https://www.who.int/publications/m/item/one-health-high-level-expert-panel-annual-report-2021>



<https://www.who.int/publications/m/item/one-health-high-level-expert-panel-annual-report-2021>



The Drive for One Health



Complex challenges

Needs collaborative approaches, systems thinking, multi-disciplinarity

Figure 1: Timeline of significant emerging zoonoses outbreaks over the past 30 years. Listed at year of emergence or highest impact with animals affected and/or reservoir animals. BSE = Bovine Spongiform Encephalitis, *S. suis* = *Streptococcus suis* (Thomas et al., 2020).

COHESA Overall Objective

The project aims to **generate an inclusive Research & Innovation ecosystem**, facilitating rapid **uptake, adaption and adoption of solutions to One Health (OH) issues**, with the **OH concept embedded across society** in Eastern and Southern Africa (ESA), working for **healthy humans, animals and environments** using a **systems approach** to learning.



COHESA Consortium and Countries

Duration 48 Months –
December 2021 – 2025

Countries

EA Ethiopia, Kenya,
Rwanda, *Tanzania*, Uganda

SA Botswana, Namibia,
Malawi, **Mozambique**,
Zambia, **Zimbabwe**

Bold Deep Dive, *Standard Italics*, rest are focussed

Consortium

ILRI – International Livestock
Research Institute

CIRAD – French Agricultural
Research Centre for
International Development

ISAAA AfriCentre –
International Service for the
Acquisition of Agri-biotech
Applications

University of Pretoria assist
as partner

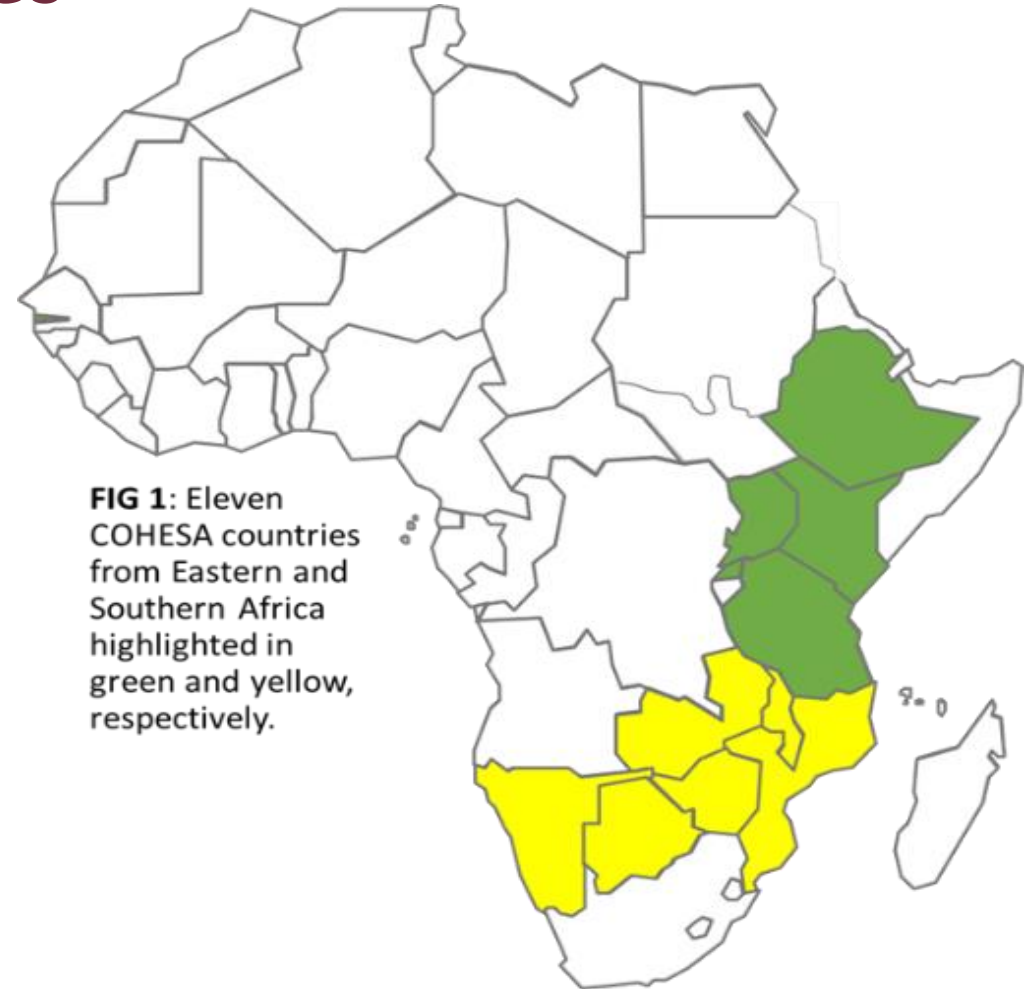
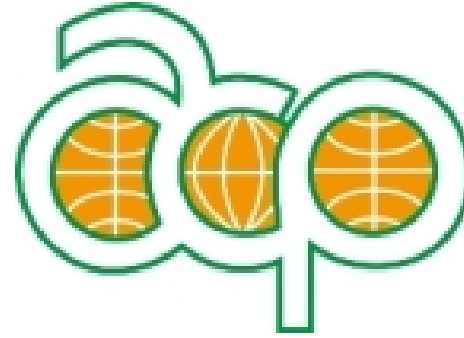


FIG 1: Eleven COHESA countries from Eastern and Southern Africa highlighted in green and yellow, respectively.

Donor



OACPS R&I



Funded by the
European Union

This project is supported by the European Commission OACPS Research and Innovation Programme: ACP-EU initiative, co-founded through ILRI and CIRAD

Objectives

- Increased **relevance of OH research and policies** in Eastern and Southern Africa (ESA)
- Enhanced national and subregional **cross-sectoral collaboration** between government entities with OH mandates and OH stakeholders across society
- Educational and research institutes equipped to train the **next generation workforce** in tackling OH issues
- Increased **capacity** of government and non-governmental stakeholders to **identify and deliver OH solutions** to final beneficiaries



Work Packages

WP1 - Understanding OH capacity, knowledge and information sharing

- All countries

WP2 - Promoting national and regional OH collaboration and governance

- All countries

WP3 - Building the future OH workforce

- Deep Dive, limited in Standard and Focussed programme

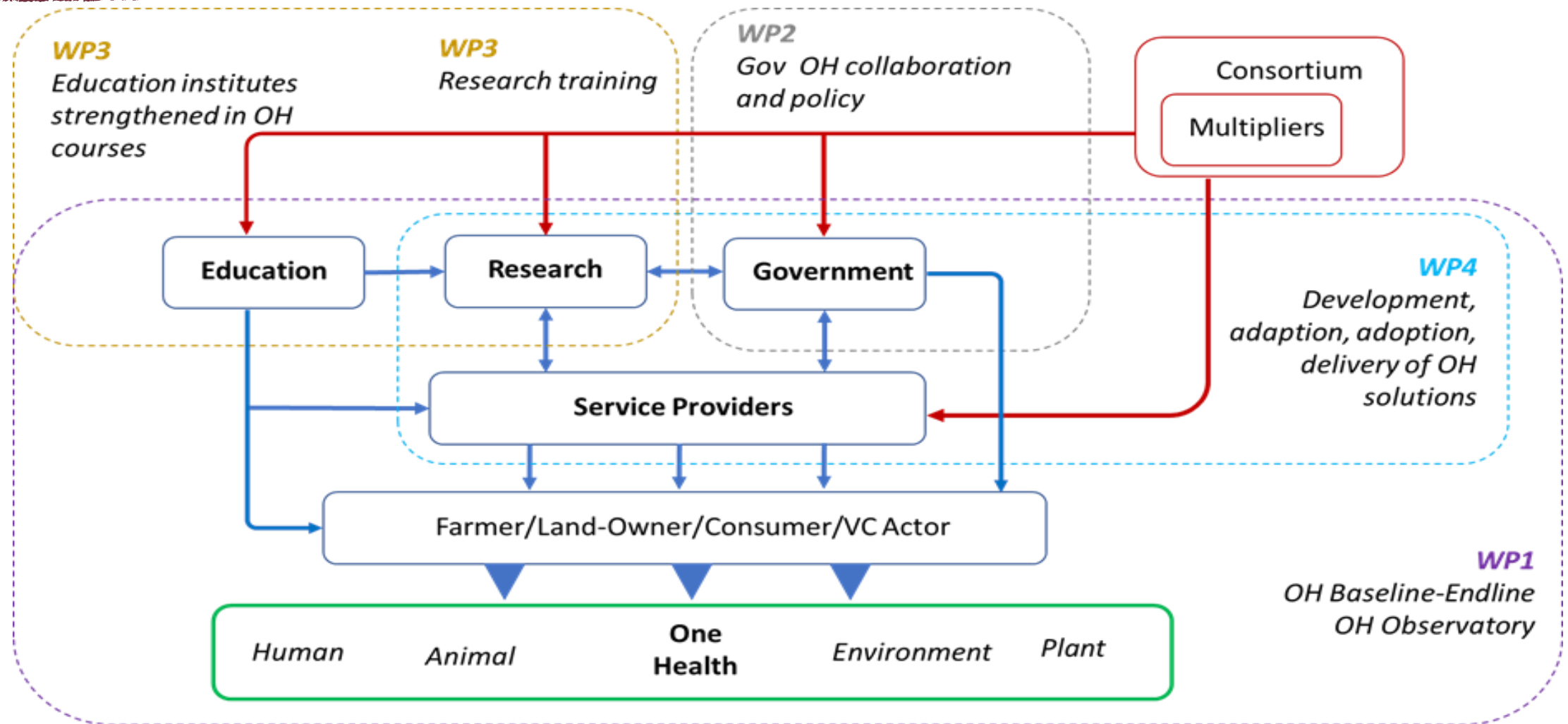
WP4 - Delivering OH solutions

Deep Dive, little in Standard and Focussed programme

WP5 – Project management

Consortium led by ILRI, CIRAD, ISAAA

Project Design – Led by Consortium & Delivered by Multipliers



Project Design – Led by Consortium & Delivered by Multipliers



Prof. Flora Pule-Meulenberg

BOTSWANA



Prof. Mirgissa Kaba

ETHIOPIA



University of Nairobi

Dr. Salome Atieno Bukachi

KENYA



Dr. Jose Fafetine

MOZAMBIQUE



Prof. Simon Angombe

NAMIBIA



UNIVERSITY OF
Global Health
EQUITY

Prof. Anselme Shyaka

RWANDA



Prof. Gabriel Shirima

TANZANIA



Dr. Chiku Mtegha

MALAWI



MAKERERE UNIVERSITY

Prof. Clovice Kankya

UGANDA



Prof. Musso Munyeme

ZAMBIA



UNIVERSITY OF ZIMBABWE

Prof. Gift Matope

ZIMBABWE



UNIVERSITEIT VAN PRETORIA
UNIVERSITY OF PRETORIA
YUNIBESITHI YA PRETORIA

Dr. John Becker

SOUTH AFRICA
(partner)

Work Package 1 – One Health Status

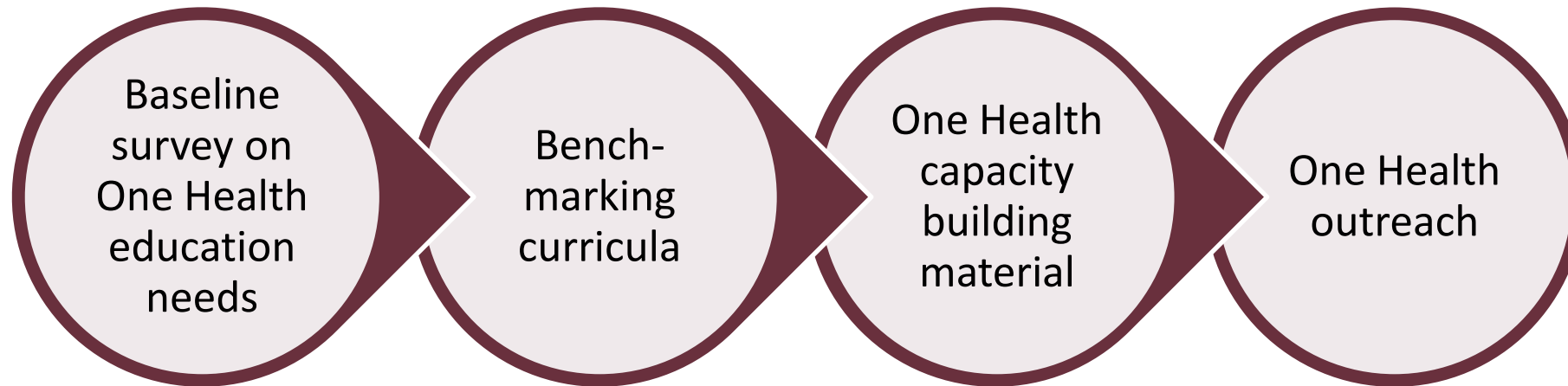
Baseline: To perform a baseline & endline assessments with key informants on One Health topics on the following:

1. **One Health national challenges, gaps, and capacities**
2. **Understand current One Health Research and Innovation landscape to identify strengths and weaknesses**
3. **Identify rapid approaches to identify key One Health issues**
4. **Assess sectoral performance in One Health, capacity, and bottlenecks**
5. **Avail baseline and endline data to evaluate performance and impact of COHESA project**

Online Observatory & Net-mapping



Work Package 3 – Future OH Workforce



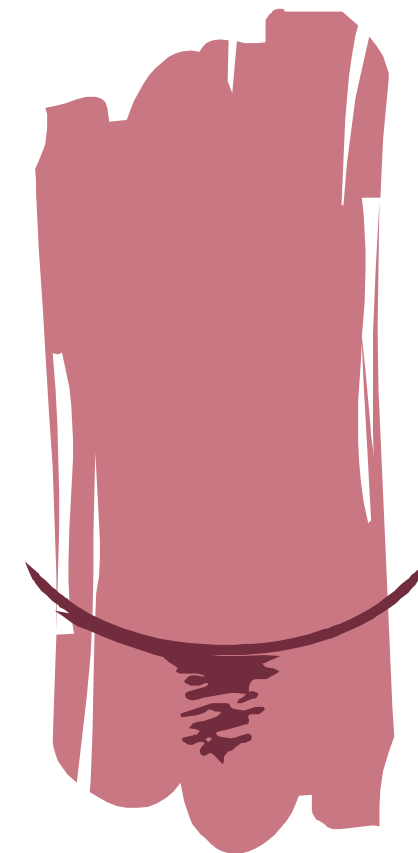


Summary

- One Health needed to face the major challenges of our time
- COHESA seeks to capacitate countries to face these challenges
- 11 countries in Eastern and Southern Africa - 4 years – 2022-25
- Consortium delivers project through in-country multipliers to national and local stakeholders
 - i.e. Government, Education, Research, Service providers
- Build on and collaborate with other One Health initiatives




Questions?





ILRI
INTERNATIONAL
LIVESTOCK RESEARCH
INSTITUTE



The International Livestock Research Institute (ILRI) is a non-profit institution helping people in low- and middle-income countries to improve their lives, livelihoods and lands through the animals that remain the backbone of small-scale agriculture and enterprise across the developing world. ILRI belongs to CGIAR, a global research-for-development partnership working for a food-secure future. ILRI's funders, through the [CGIAR Trust Fund](#), and its many partners make ILRI's work possible and its mission a reality. Australian animal scientist and Nobel Laureate Peter Doherty serves as ILRI's patron. You are free to use and share this material under the Creative Commons Attribution 4.0 International Licence .

*better lives
through
livestock*

ilri.org