

The Monthly Maize Market Report was developed by researchers at IFPRI Malawi with the goal of providing clear and accurate information on the variation of maize prices in selected markets throughout Malawi. The reports are intended as a resource for those interested in maize markets in Malawi, namely producers, traders, consumers, or other agricultural stakeholders.

Highlights

- Retail prices of maize increased by 26 percent since December 2022.
- No ADMARC purchases were reported in any of the markets monitored by IFPRI.
- ADMARC sales were reported in 13 out of the 26 markets monitored by IFPRI.
- Retail prices in Malawi were lower than elsewhere in eastern Africa.

Prices increased by 26 percent since December 2021

During January 2022, maize retail prices averaged at MWK191/kg. This is 26 percent higher than December 2021 and 7 percent lower than January 2021. From the first week of January, prices sharply increased up until second week of January 2022 where retail prices slightly declined and continued with a mixed trend (Figure 1). As we are in the lean season, stocks get depleted, putting pressure on prices to go up. Prices are likely to continue rising this year because of late rains, poor access to fertilizer, and the floods in the south.

Within the month, maize retail prices varied widely starting from as a low as MWK100/kg in Mzimba and as high as MWK250/kg in Bangula. In 20 out of 26 markets monitored by IFPRI, a maximum of equal to or greater than MWK200/kg was reported. All markets registered a price increase ranging from 1 percent in Mwanza to 42 percent in Jenda (Table 1).

Prices remain highest in the South

Maize continues to sell at highest retail prices in the South. In addition to geographical price variations, reports from our traders indicate that most of the maize that is being sold in the South is currently being sourced from the Center in the districts such as Dedza, Ntcheu, Lilongwe and Mchinji. Hence, traders in the south are adding a transport markup to the prices from the center.

Figure 1. Daily average maize retail prices since May 2020 and 2021

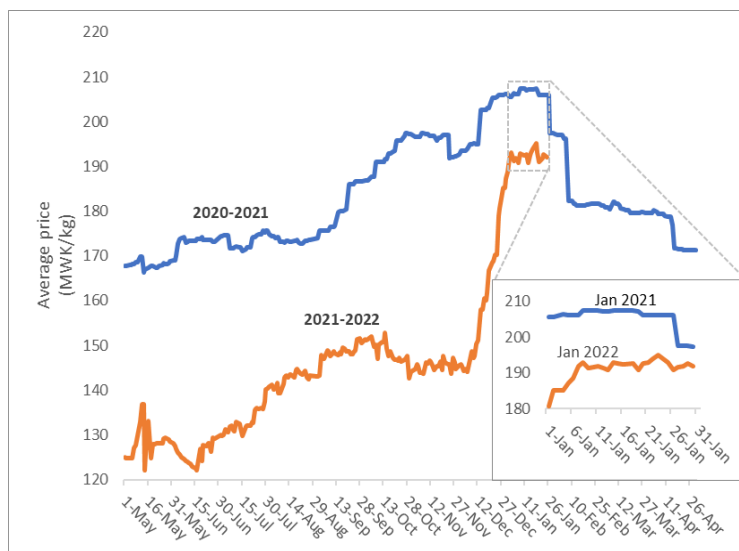
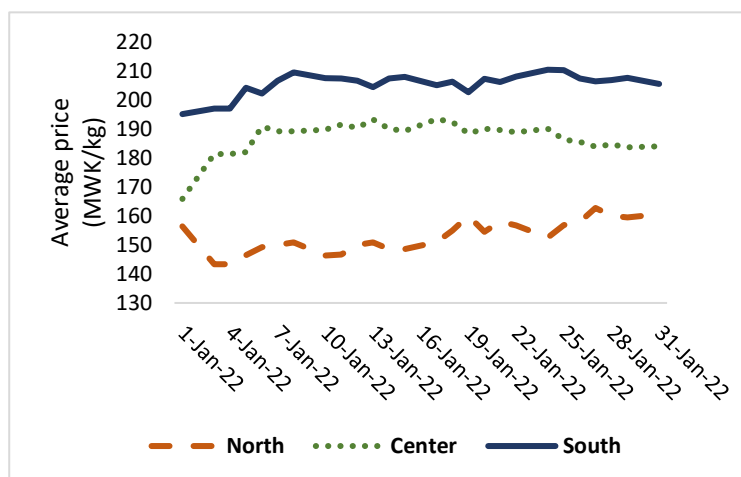


Figure 2. Daily average maize retail prices by region during January 2022



As at the end of the month, prices in the South averaged MWK 206/kg (22 percent higher than last month), in the Center averaged MWK 187/kg (29 percent higher than last month), while in the North prices averaged at MWK 153/kg (24 percent lower than last month).

Table 1. Maize retail prices (MWK/kg) by market

	Dec						Jan	Change
	Average	1-Jan-22	8-Jan-22	15-Jan-22	22-Jan-22	29-Jan-22	Average	
Chitipa	136	160	200	200	-	150	178	↑ 31%
Jenda	103	130	148	150	150	150	146	↑ 42%
Karonga	132	175	178	165	177	180	175	↑ 32%
Mzimba	110	105	120	120	140	140	125	↑ 14%
Mzuzu	133	125	150	150	-	175	150	↑ 13%
Rumphi	126	200	145	150	150	150	163	↑ 29%
Chimbiya	135	170	188	182	173	160	174	↑ 29%
Mchinji	140	170	193	200	190	195	191	↑ 36%
Mitundu	144	170	200	200	200	190	192	↑ 34%
Nsungwi	143	160	190	190	200	195	186	↑ 30%
Salima	159	160	173	175	187	180	175	↑ 10%
Balaka	140	175	190	190	190	180	185	↑ 32%
Bangula	180	204	226	216	216	214	216	↑ 20%
Chikwawa	200	200	200	200	210	220	208	↑ 4%
Chiringa	151	200	200	200	200	196	199	↑ 32%
Liwonde	154	200	220	200	220	220	210	↑ 37%
Luchenza	164	180	220	220	220	220	215	↑ 31%
Lunzu	167	200	220	220	220	220	215	↑ 29%
Mangochi	161	200	200	190	190	200	195	↑ 21%
M'baluku	164	200	210	210	215	223	212	↑ 29%
Mbayani	176	200	230	230	230	230	224	↑ 27%
Mpondabwino	156	160	193	193	184	193	189	↑ 21%
Mulanje	167	200	220	220	220	220	218	↑ 31%
Mwanza	181	185	183	183	183	185	183	↑ 1%
Ngabu	174	215	215	220	215	213	215	↑ 24%
Nsanje	170	215	220	230	230	240	226	↑ 33%
All markets	152	181	192	192	194	193	191	↑ 26%

Regional prices

As of the end of January, retail prices of maize in the Malawian markets were lower than in selected regional markets in eastern Africa and on SAFEX (the main grain futures market in South Africa). Prices in Lunzu were higher than on SAFEX and Zambia's national average of January 2022.

How data was collected

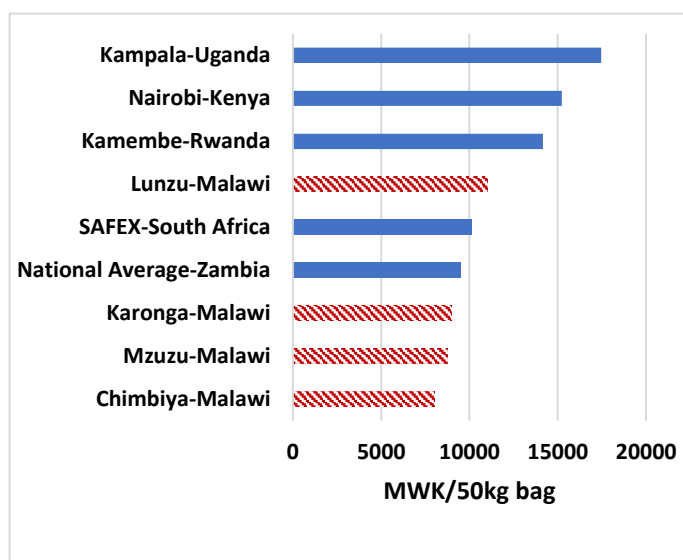
IFPRI Malawi has been monitoring retail maize prices and ADMARC activities in selected markets since January 2016. Currently, data is collected from 26 markets across the country, with monitoring occurring six days per week, excluding Sundays. At least three monitors report data from each of these markets. Data is collected by means of automated short message service (SMS) with follow-ups made by telephone if necessary. Regional prices reported in Figure 3 are sourced from Food and Agriculture Organization's Global Information and Early Warning System (FAO-GIEWS), IFPRI Malawi, the Johannesburg Stock Exchange (JSE), and the Zambia Statistics Agency.

ADMARC Activities

No ADMARC purchases were reported in any of the markets monitored by IFPRI.

ADMARC sales were reported in 13 out of the 26 markets monitored by IFPRI. ADMARC is selling maize at MWK 205/kg, 8 percent higher than average retail price in January 2022.

Figure 3. Retail maize prices in selected markets in eastern and southern Africa (as of January 2022)



Government of Flanders

For further information contact
Aubrey Jolex (A.Jolex@cgiar.org)
at IFPRI Malawi.

To learn more about our work, visit
www.massp.ifpri.info or
follow us on Twitter ([@IFPRIMalawi](https://twitter.com/IFPRIMalawi)).