



IFPRI

# WOMEN'S EMPOWERMENT IN AGRIFOOD GOVERNANCE (WEAGOV)

Training Video: Using WEAGov tools

Jordan Kyle and Catherine Ragasa  
International Food Policy Research Institute



CGIAR

# Use #1: Using the conceptual framework as an analytical lens

Your research question	How the framework guides your theory
<i>“I’m evaluating a new fertilizer subsidy program – what gender dimensions should I examine?”</i>	Map the program against the 3 policy stages. At design stage: were women’s cropping priorities considered? At implementation: are women represented among extension agents delivering the subsidy? At evaluation: is gender-disaggregated data being collected on uptake?
<i>“I’m doing a literature review on women’s participation in climate adaptation policy in West Africa”</i>	Use the 3 dimensions as organizing categories: what does the literature show about women being considered in design vs. included in implementation vs. leading evaluation processes? Gaps in the literature map directly to gaps in the evidence base.
<i>“I’m advising a government ministry on improving gender responsiveness of a nutrition policy”</i>	Walk the 9 cells as a rapid diagnostic — which cells does the ministry score well on based on available documents? Which cells have no available evidence? That gap map is your entry point for recommendations.

## Use 2: Policy content analysis - What to look for

<b>Overall objectives</b>	<ul style="list-style-type: none"><li>• Look at the key goals and targets in the policy document – prioritize specific, measurable commitments over aspirational language</li></ul>
<b>Gendered content</b>	<ul style="list-style-type: none"><li>• Search for keywords: women, girls, equity, inclusion, voice, agency, social justice</li><li>• Check for intersectionality – does the policy address the specific needs of marginalized subgroups of women, such as those defined by age, ethnicity, caste, or socioeconomic status?</li></ul>
<b>Gendered participation</b>	<ul style="list-style-type: none"><li>• Check drafting team composition and gender balance</li><li>• Note the proportion of women on advisory, supervisory, or review committees</li><li>• Check for evidence of any consultative processes undertaken during policy design</li></ul>

## Scoring on gender consideration in agrifood policies

Score	Definition
1	No or little mention of “gender” or “women” in the policy document
2	Limited gender analysis; some discussion of gender but lacks any specific gender-related goals or targets
3	Some gender analysis in the policy document with clear links to agrifood policies and has gender-related goals but lacks specific measurable targets and details of how to track them
4	Strong gender analysis; has gender-specific goals with specific measurable targets in the results framework and implementation plan; exemplary in its focus on gender equality and women’s empowerment.

# Desk review workflow

## Score policy document

- Search for gender keywords, assess quality of analysis, and check for specific, measurable targets
- Assign a score of 1-4

## Go beyond the document

- Find evidence of implementation in practice – are gender targets actually funded and tracked – not just stated?
- Look for budget reports, implementation reports, performance reviews

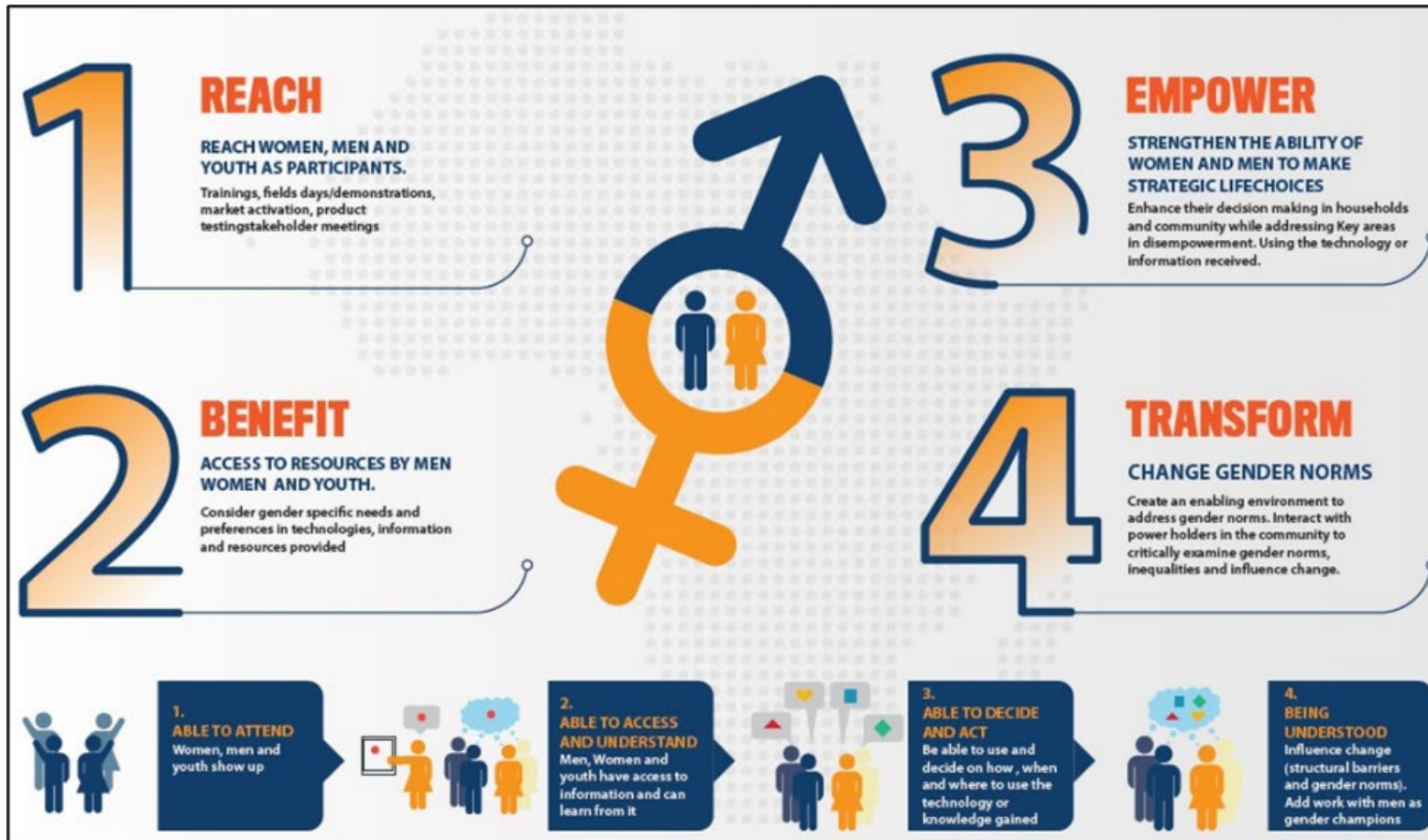
## Check for data

- Does the national statistical system collect gender-disaggregated data in this sector?  
Absence of data is itself a critical finding

## **OUTPUT: A GAP MAP**

The pattern across all three policy stages reveals where the policy system is working for women – and where the critical failures are. This gap map can become the basis for your policy papers and recommendations

# Complementary tool for a different level of analysis



WEAGov is for analyzing national-level policies

RBET (Reach, Benefit, Empower, Transform) useful for analyzing program design, delivery, and outcomes

## Use 3: Survey questions as KII / FGD probes – Selecting the right questions for your project

If your focus is...	Key questions to use	What you're measuring
Policy salience of gender	Q1. How often have high-level officials discussed women's needs in relation to [priority policy issue] in the past 12 months?	Whether gender features in elite policy discourse on key issue
Inclusion of women's inputs in policy process	Q2. To what extent to [citizens in general / women specifically ] have opportunities to provide input into agrifood policy formulation?	Whether formal channels exist and whether women can actually navigate them

## Use 3: Survey questions as KII / FGD probes – Selecting the right questions for your project

If your focus is...	Key questions to use	What you're measuring
Women's substantive influence	Q3. Were or are women leading or influencing the policy deliberations and development?	Whether presence translates to power
Implementation gaps	Q4. To what extent are the gender goals / actions in the policy being implemented in practice?	Gap between policy commitment and delivery
Tracking and monitoring	Q5. To what extent are the gender goals in the policy being monitored and tracked in reality?	Accountability gap – whether gender commitments are enforced or ignored in adoption

## Summary: Ways to use WEAGov

Version	Components	Best for...
Framework only	3 x 3 conceptual framework	Literature reviews, rapid diagnostics, advisory work, selecting research questions
Desk review + framework	Policy content analysis checklist, scoring rubric, objective desk review indicators	Projects with document access but limited field time
Desk review + expert survey	All of above + perception questions with key informants	Projects with some field time, generates both objective and perception data; allows opportunity to understand 'why' behind scoring
Full pilot	All 5 steps including organization survey + validation and policy workshops	National-level baselines, tracking over time

# Find out more!

- Check out our WEAGov website:  
<https://www.ifpri.org/project/womens-empowerment-agrifood-governance-weagov/>
- On this website, you can find:
  - A clickable infographic with information on measurement and scoring
  - A background paper on WEAGov conceptual framework
  - Results from pilot studies in Nigeria and India
  - Implementation guide for implementing your own pilot

