

# Essential Commodities Prices, Availability, and Market Actors' Perceptions

## October 2025

Tarig Rakhy, Hala Abushama, Shima Mohamed, Halefom Yigzaw Nigus, and Khalid Siddig

Summary .....	1
Cereals and Flour .....	2
Lentils, Rice and Pigeon Peas .....	3
Vegetables .....	5
Meat and Animal Products.....	7
Oilseeds, Cooking Oil, Sugar, and Fava Beans .....	8
Seeds (Improved and Local).....	10
Fertilizers .....	11
Diesel and Petrol .....	12
Exchange Rates .....	14
Market Actors' Perceptions .....	15

### Summary

Sudan's markets in October 2025 showed relative stability with several commodities experiencing improved availability and quality. Wheat and wheat flour prices declined, while sorghum, millet, vegetables, lentils, meat, oilseeds, and sugar showed mixed but generally stable trends. Fuel prices fell early in the month before stabilizing, and fertilizer prices remained steady with better availability.

Regional disparities persisted, with Darfur, Kordofan, and parts of Blue Nile continuing to record the highest prices for many goods due to conflict, transport disruptions, and liquidity constraints. Supply chain problems increased compared with September, driven by security concerns, high transport costs, exchange rate pressures, and limited cash access. Most merchants reported no major challenges related to storage, power, or hiring workers, although market safety concerns rose slightly, especially in North Darfur.

Tax compliance increased at the federal level but remained highest at state and locality levels. Despite ongoing challenges, merchants continued to show resilience: over half plan to maintain current trade levels, nearly one-third expect to expand, and only small shares intend to reduce trade, change commodities, or relocate, although uncertainty increased modestly.

## Cereals and Flour

Cereal prices remained generally stable in October, with notable decreases in wheat and wheat flour prices between September and October 2025. Wheat prices, which rose gradually through mid-August to September, declined sharply in early October before stabilizing at a lower level (Figure 1), reflecting improved supply conditions and availability as demonstrated by the increased share of traders reporting high availability (Figure 3). Sorghum and Millet prices remained relatively stable throughout the month with slight changes. Wheat flour prices remained high overall compared to other cereals, peaked in late September and declined noticeably in early October.

**Figure 1:** Local prices of cereals and wheat flour, weekly average, 1000 SDG/Kg, February - October 2025

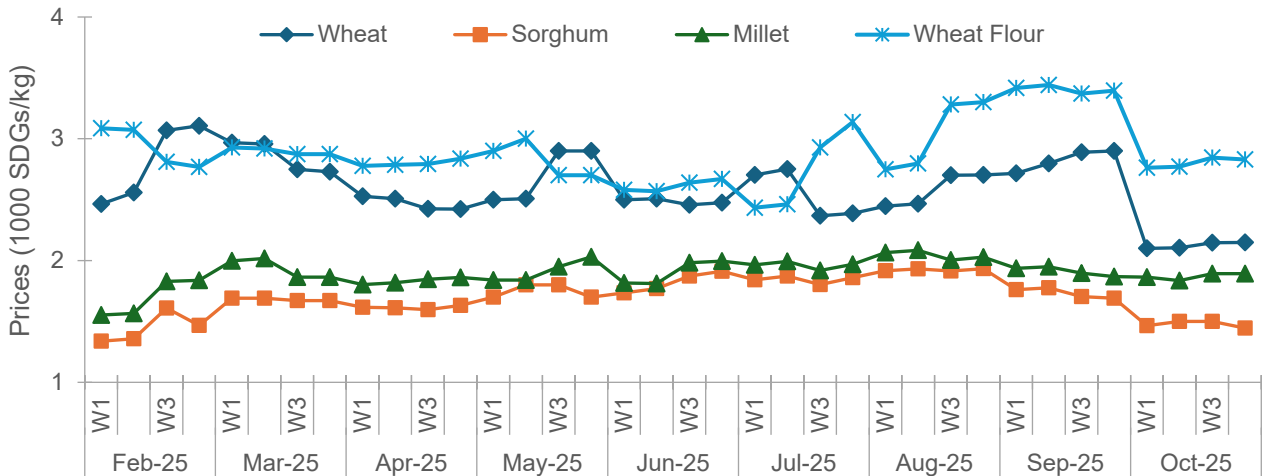


Figure 2 shows notable variation in cereal and wheat flour prices across Sudanese states between September and October 2025. Wheat prices declined slightly in most states, with the highest prices recorded in Blue Nile, Khartoum and Gedaref states. Sorghum and millet prices remained relatively low and more stable across states except for millet prices in Red Sea, Khartoum and West Kordofan where they were comparatively higher in October than in September. Wheat flour prices showed slight decreases in several states and modest increases in others, reflecting mixed trends across regions while remaining highest in most Darfur states, Red Sea and West Kordofan.

**Figure 2:** Local monthly average prices of cereals across states, 1000 SDG/Kg, September - October 2025

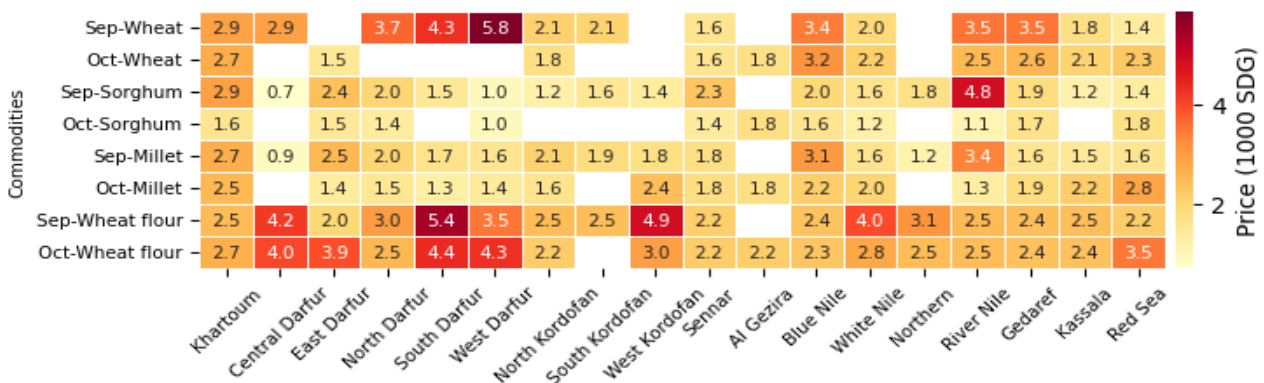


Figure 3 shows the perceived availability of cereals and wheat flour from February to October 2025. In October, the availability of cereals showed a mixed trend. Wheat and wheat flour saw the most notable improvements, with fewer traders reporting on low or scarce availability and the share of traders reporting high availability increased from 34 percent and 66 percent in September to 71 percent for both commodities, respectively in October. In contrast, Sorghum availability declined slightly, with the share of traders reporting high availability decreased from 61 percent in September

to 58 percent in October. Millet availability also decreased slightly, with high availability reporting dropping from 51 percent in September to 41 percent in October.

**Figure 3:** Cereals and wheat flour availability scores, February – October 2025

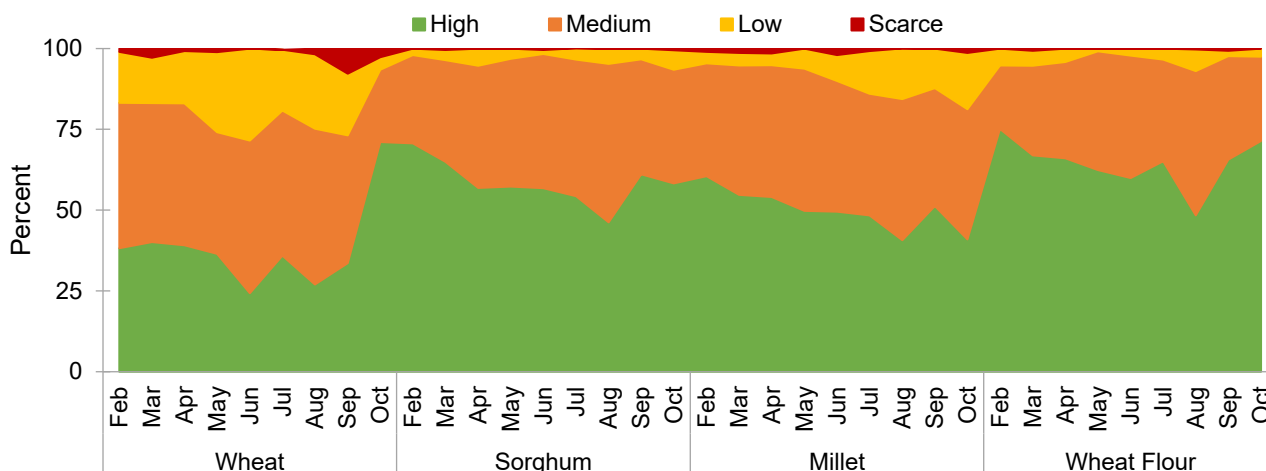
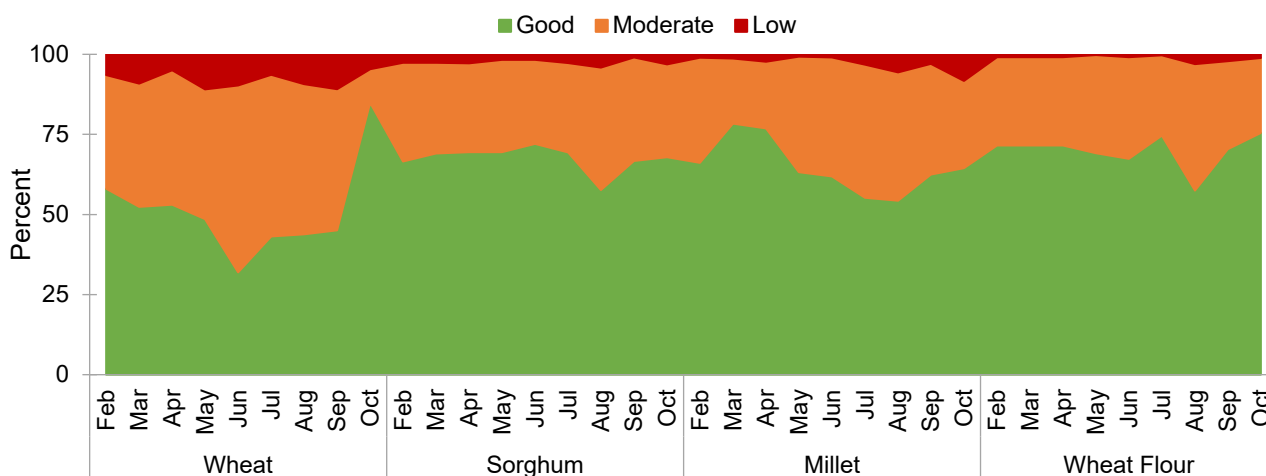


Figure 4 shows traders’ perceptions of cereal and wheat flour quality from February to October 2025. For all cereals, quality reporting improved in October compared to September, with the share of traders rating quality as good increased notably for wheat, rising from 45 percent September to 85 percent in October, while sorghum, millet, and wheat flour also recorded more modest increases in good quality reporting.

**Figure 4:** Cereal and wheat flour quality scores, February - October 2025



### Lentils, Rice and Pigeon Peas

Figure 5 shows the average weekly prices of lentils, rice, and pigeon peas during October 2025. Rice prices remained stable throughout the month, while lentil prices showed a slight increase. In contrast, pigeon peas prices dropped toward the end of October.

**Figure 5:** Local prices of lentils, rice and pigeon peas, weekly average, 1000 SDG/Kg, October 2025

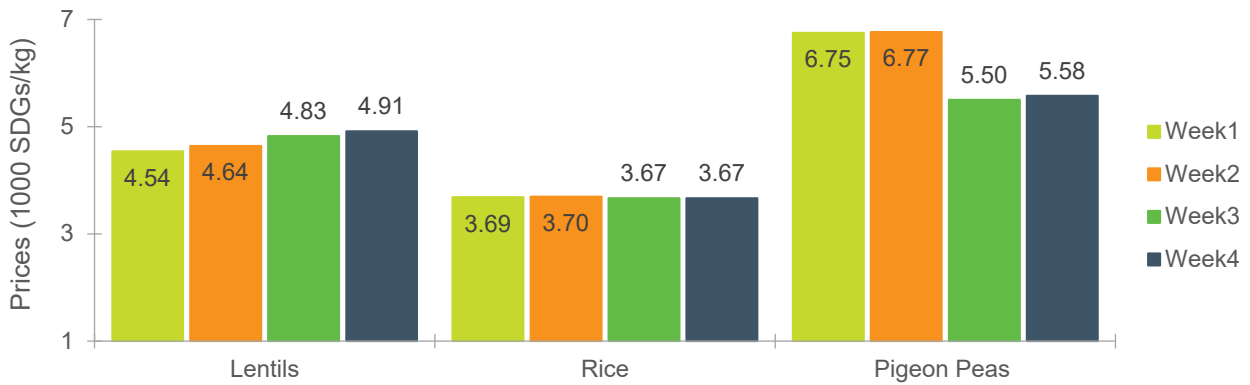


Figure 6 shows prices of lentils, rice, and pigeon peas across Sudan’s states during October 2025. It reveals that regional disparities are stark. Prices in South and Central Darfur were significantly higher than in Al Gezira and Sennar. Al Gezira recorded the lowest prices for both lentils and rice, while Sennar reported the lowest price for pigeon peas. Besides lentils, South Darfur recorded the highest prices for rice and pigeon peas. These gaps likely reflect the impact of ongoing conflict in the Darfur region, which contrasts with the relative stability in states such as Al Gezira and Sennar.

**Figure 6:** Local monthly average prices of lentils, rice and pigeon peas across states, 1000 SDG/Kg, October 2025

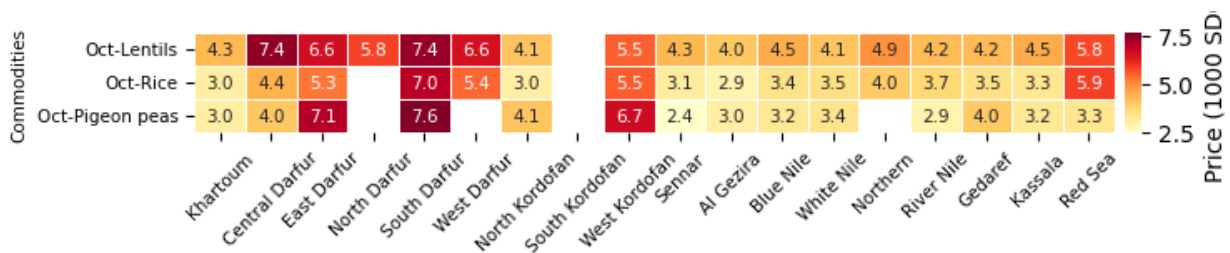
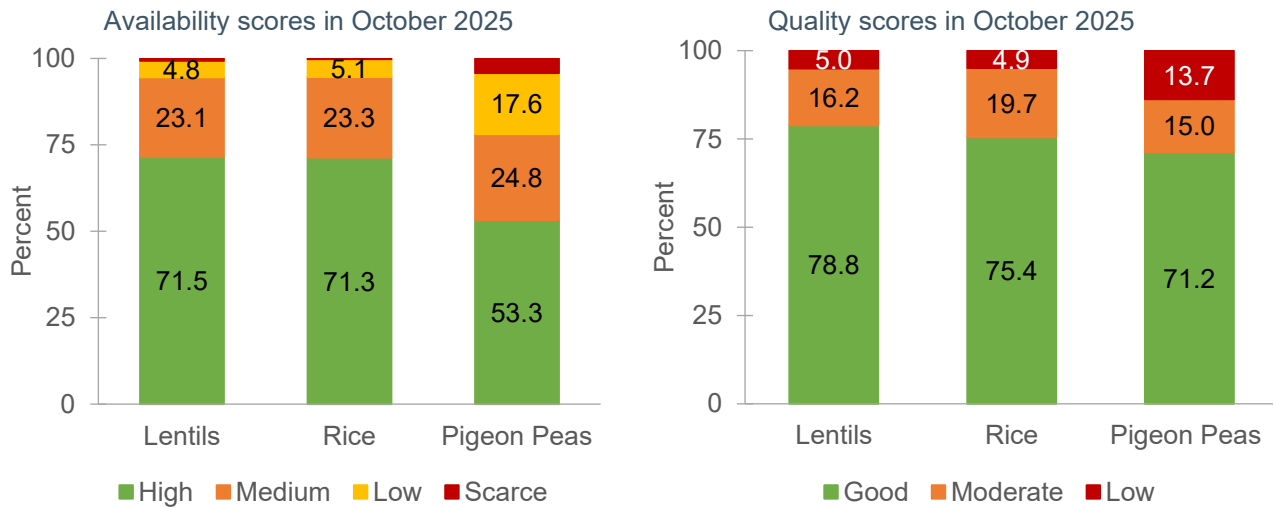


Figure 7 shows the perceived availability and quality of lentils, rice, and pigeon peas during October 2025. Availability was highest for lentils and rice, with 71 percent of traders reporting high availability for both commodities, while pigeon peas showed comparatively lower availability, with 53 percent reporting high and 18 percent reporting low availability. Quality perceptions followed a similar pattern, lentils and rice recorded the highest good-quality ratings at 79 and 75 percent respectively, and pigeon peas showed slightly lower quality scores, with 71 percent rated as good.

**Figure 7: Lentils, Rice, and Pigeon Peas availability and quality scores, October 2025**



## Vegetables

Figure 8 shows the vegetable prices from February to October 2025. In October, vegetable prices continued to show a mixed but generally stable trend. Tomato prices, after rising during September, declined gradually through October. Potato prices remained relatively stable throughout October, mirroring the perceived improvement in potatoes' availability shown in Figure 10, while onion prices increased slightly during October, reflecting decreased availability shown in Figure 10.

**Figure 8: Local prices of vegetables, weekly average, SDG/Kg, February - October 2025**

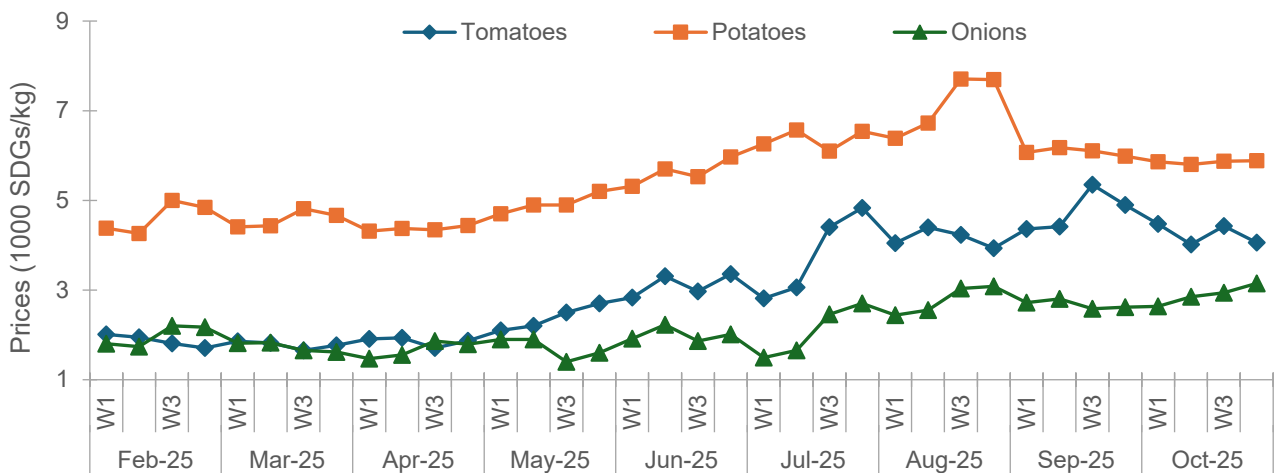


Figure 9 shows that regional disparities in vegetable prices persisted in October across Sudan markets. Tomato prices showed a mixed trend of increases and decreases across states, with the highest levels recorded in West Kordofan, Red Sea, Northern state and Darfur states except Central Darfur, while the lowest prices were recorded in Kassala and Khartoum. Potato prices also varied notably, with the highest prices recorded in West Kordofan, Sennar, and North Darfur. While onion prices showed moderate variation across states, with the highest prices recorded in North and South, Darfur, and West Kordofan states.

**Figure 9:** Local monthly average prices of vegetables across states, 1000 SDG/Kg, September - October 2025

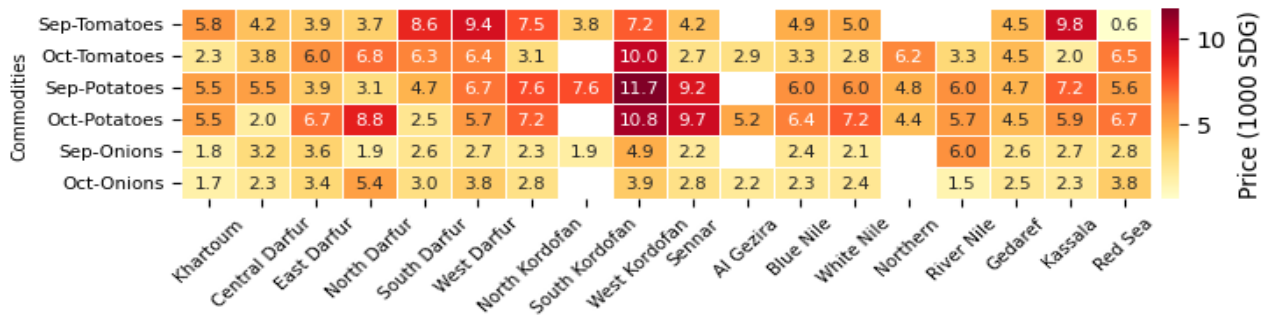


Figure 10 shows an improvement in the availability of tomatoes and potatoes in October compared to September. The share of traders reporting high availability of tomatoes and potatoes increased significantly from 29 percent, 32 percent in September to 59 percent and 65 percent respectively in October. In contrast, onion perceived availability decreased from 54 percent in September to 40 percent in October.

**Figure 10:** Vegetable availability scores, February - October 2025

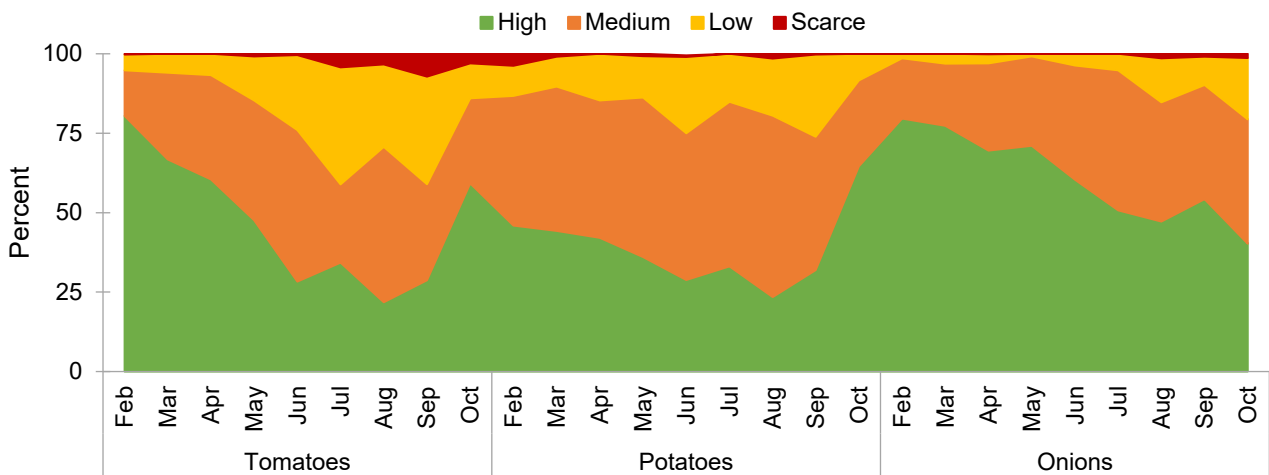
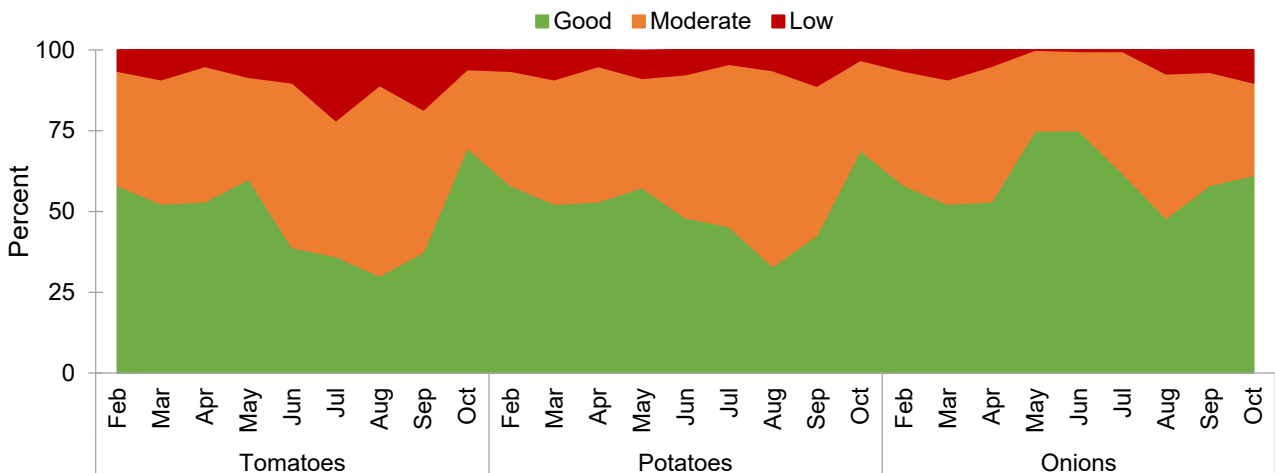


Figure 11 shows traders' perceptions of vegetable quality from February to October 2025, revealing a notable improvement across all commodities in October compared to September. Tomato, potatoes, and onions good quality reporting increased in October compared to September by 32 percent, 26 percent, and 3 percent, respectively, while moderate and low-quality ratings declined accordingly.

**Figure 11:** Vegetable quality scores, February - October 2025



## Meat and Animal Products

Figure 12 shows price trends for meat and animal products between February and October 2025. During this period, prices for lamb, beef, and chicken generally increased, with chicken prices spiked sharply in early October before easing toward the end of the month. Milk prices fell noticeably in September, while fish prices remained steady through September and October. In contrast, egg prices stayed relatively stable throughout the entire period.

**Figure 12:** Local prices in SDGs of meat and animal products, weekly average, February-October 2025

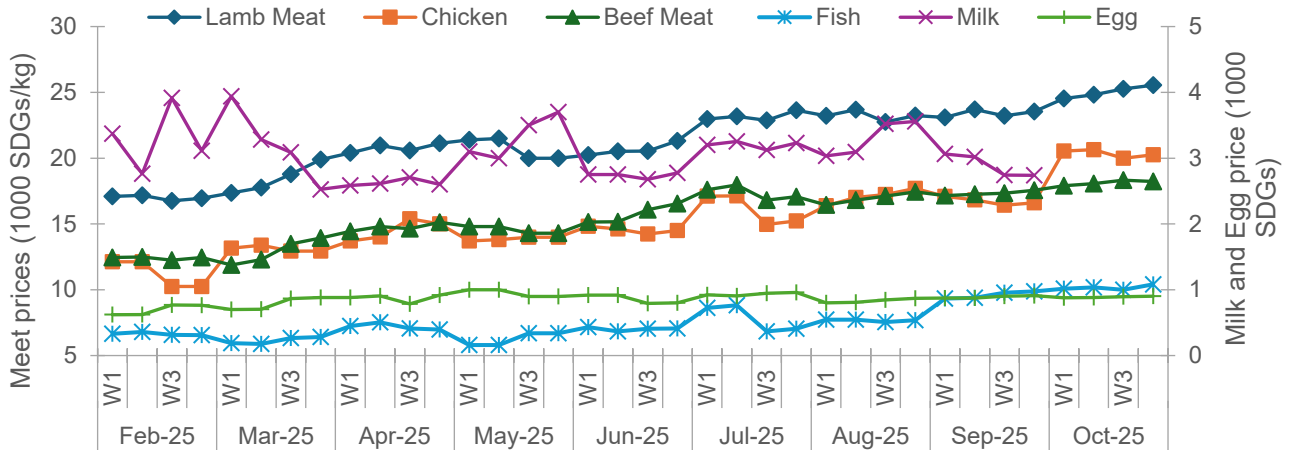


Figure 13 presents meat and animal product prices across Sudan's states for September and October 2025. Red Sea recorded the highest October prices for lamb and beef. Northern State had the highest October price for chicken, while South Darfur reported the lowest chicken price and the lowest October fish price. Red Sea state registered the largest increase in beef prices between September and October. River Nile recorded the highest October fish price, while South Darfur had the lowest. The largest fish price increase between September and October occurred in Sennar state. East Darfur reported the lowest October lamb price while West Darfur reported the highest increase in chicken prices between September and October. Notably, the highest October fish price was six times greater than the lowest, while beef and lamb prices varied by three times, and chicken prices by about two times across states.

**Figure 13:** Local prices of meat and animal products across states (1000 SDGs), September – October 2025.

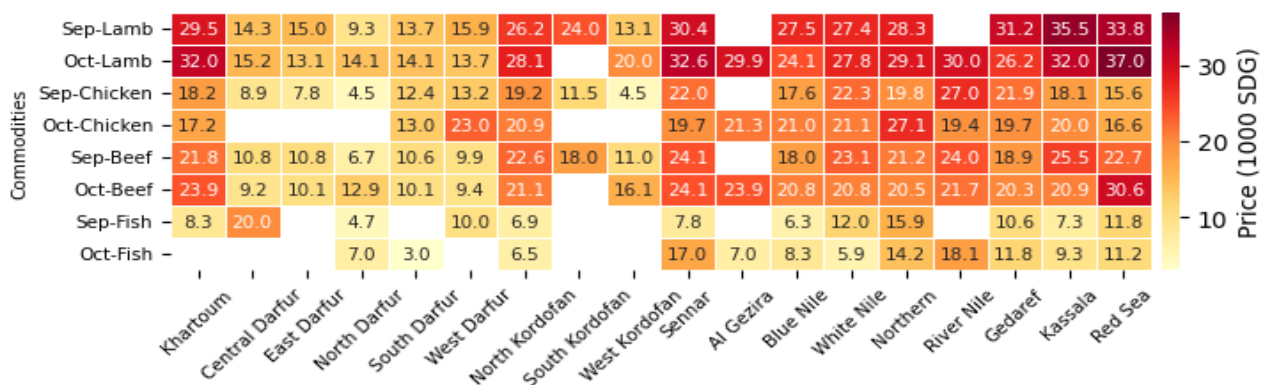


Figure 14 presents trends in the availability of meat and animal products as reported by traders between February and October 2025. Overall, availability improved across all commodities in this category in October. During the period, the share of traders reporting high availability of lamb and beef declined steadily before rebounding in September and October. Chicken and milk followed a similar pattern, fluctuating early on but increasing toward the end of the period. In contrast, fish

availability showed a consistent upward trend, with more traders reporting high availability over time. Egg availability rose sharply in October.

**Figure 14:** Meat and animal products availability scores, February - October 2025

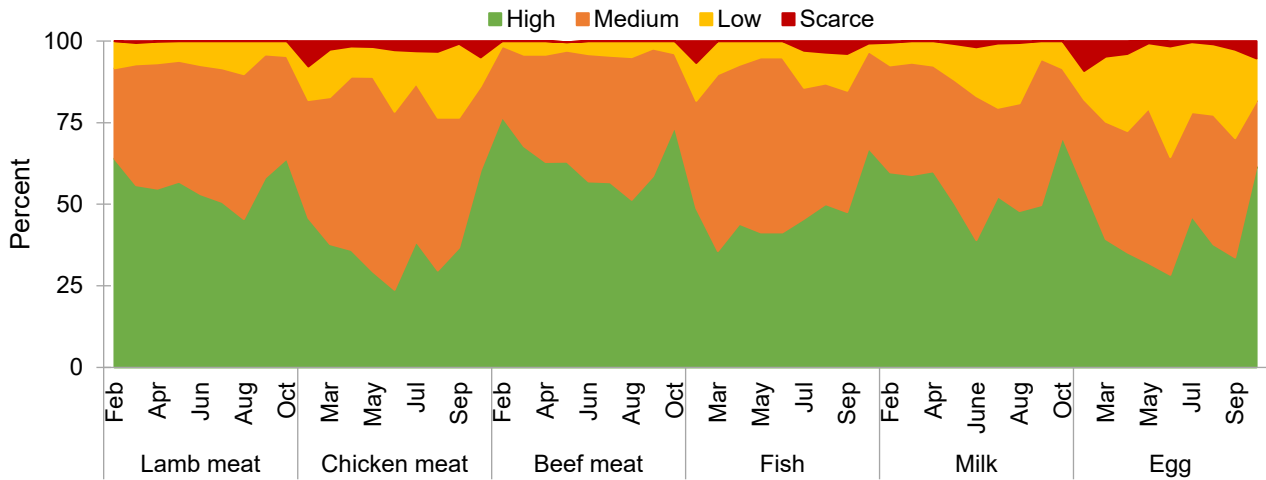
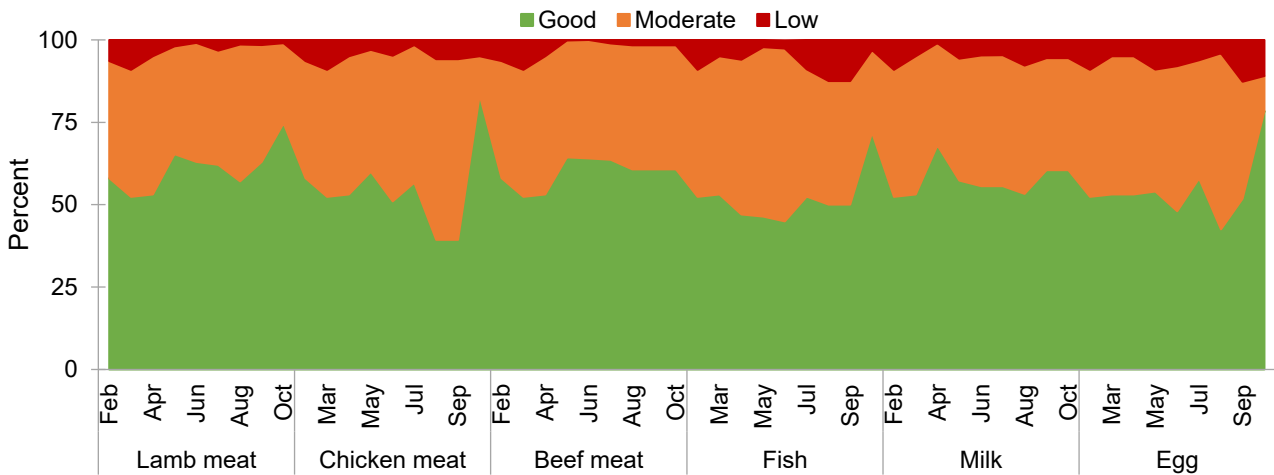


Figure 15 shows how the perceived quality of meat and animal products varied across commodities between February and October 2025. For lamb, reports of high perceived quality followed an upward trend and peaked in October. Chicken quality peaked in October after a sharp decline in August. Similarly, fish and eggs reached their highest perceived quality in October. In contrast, beef and milk maintained relatively stable levels of high perceived quality during September and October.

**Figure 15:** Meat and animal products quality scores, February - October 2025



## Oilseeds, Cooking Oil, Sugar, and Fava Beans

Figure 16 illustrates price trends for sesame, groundnuts, cooking oil, sugar, and fava beans between February and October 2025. Prices for fava beans, groundnuts, sugar, and sesame declined in October after rising in September. Cooking oil prices surged in early October before stabilizing later in the month.

**Figure 16:** Local prices (1000 SDGs) of oilseed (Kg), cooking oil (Liter), sugar (Kg), and fava beans (Kg), February – October 2025

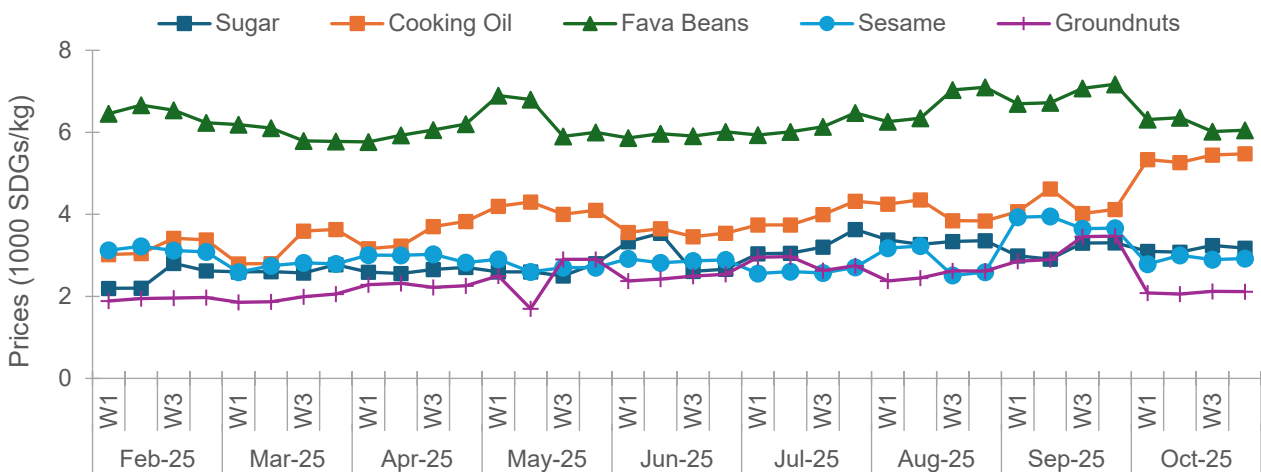


Figure 17 highlights notable shifts and regional disparities in the prices of sesame, groundnuts, cooking oil, sugar, and fava beans during September and October 2025. South Darfur and West Darfur recorded the highest October prices for fava beans and cooking oil, respectively. West Darfur also reported the largest increase in sugar prices between September and October. North Darfur experienced the highest price increases for sesame and fava beans, whereas South Darfur recorded the lowest October sesame price. Notably, for groundnuts and sugar, the highest prices were more than five times greater than the lowest prices; for cooking oil and sesame, more than three times; and for fava beans, more than double.

**Figure 17:** Oilseeds, cooking oil, sugar, and fava beans prices (1000 SDGs) across states, September - October 2025

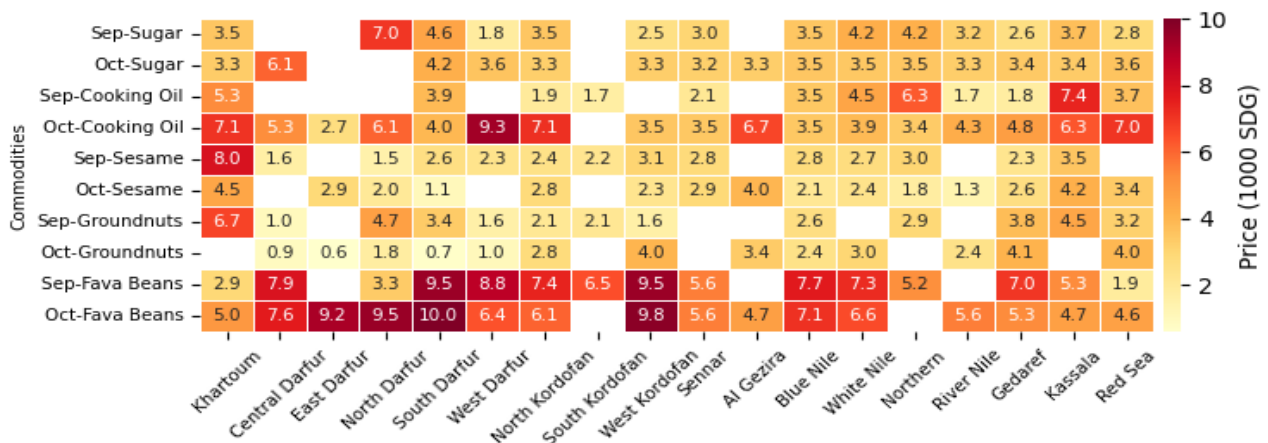


Figure 18 presents trader-reported availability trends for sesame, groundnut, cooking oil, sugar, and fava beans between February and October 2025. For all commodities except groundnuts, perceived high availability increased in October. A closer look shows that sesame and fava beans' high availability scores improved in October after a period of decline. Cooking oil availability stabilized between September and October, while sugar's high availability score continued to improve during these months.

**Figure 18:** Oilseeds, cooking oil, sugar, and fava beans availability scores, February - October 2025

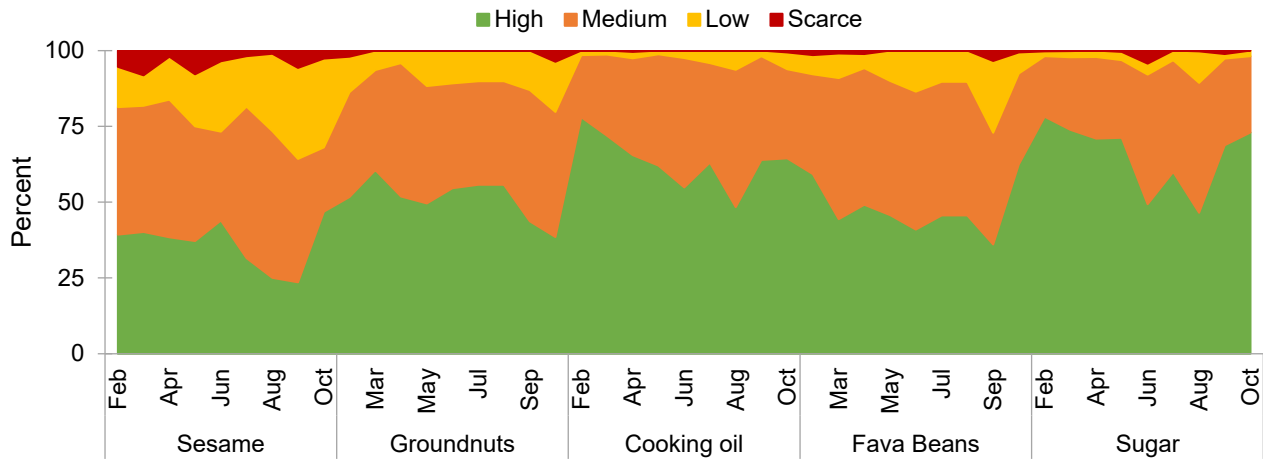
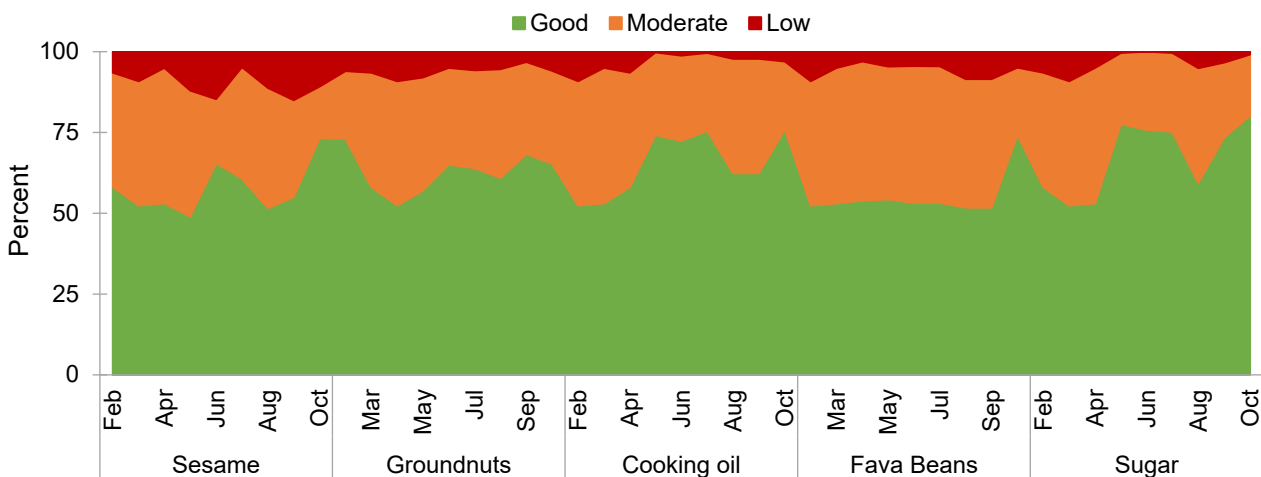


Figure 19 shows trends in the perceived quality of sesame, groundnuts, cooking oil, sugar, and fava beans between February and October 2025. For all commodities except groundnuts, reported high quality improved in October. A closer look reveals that sesame and sugar quality improved in the latest months. For fava beans and cooking oil, perceived quality increased after a period of stagnation.

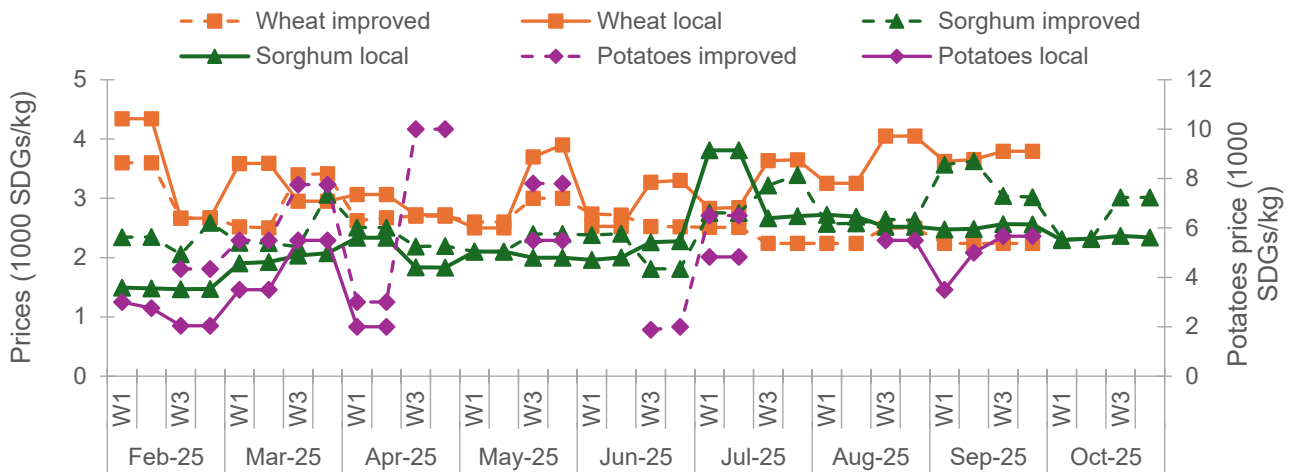
**Figure 19:** Oilseeds, cooking oil, sugar, and fava beans quality scores, February – October 2025



### Seeds (Improved and Local)

Improved and local seed prices remained relatively stable in October, with improved sorghum prices exhibiting some fluctuation, declining from late September before rising in the final two weeks of October (Figure 20).

**Figure 20:** Local seeds prices (1000 SDG/Kg), monthly average, February – October 2025



## Fertilizers

Figure 21 shows fertilizer prices from February/May to October 2025. In October, Urea and DAP prices remained consistent and stable throughout the month.

**Figure 21:** Fertilizer prices (1000 SDG/Kg), monthly average, February/May – October 2025

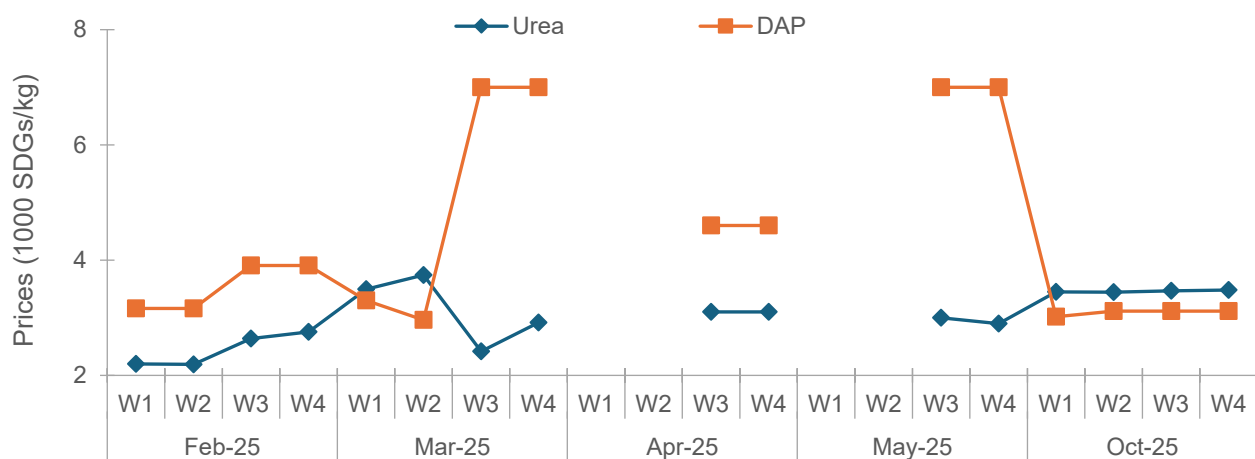


Figure 22 shows perceived availability of fertilizers from February/May to October 2025. In October, availability improved for both Urea and DAP compared to May. The share of traders reporting high availability of Urea and DAP increased from 20 percent and 17 percent in May to 45 percent and 46 percent respectively in October.

**Figure 22:** Fertilizers availability scores, February/May - October 2025

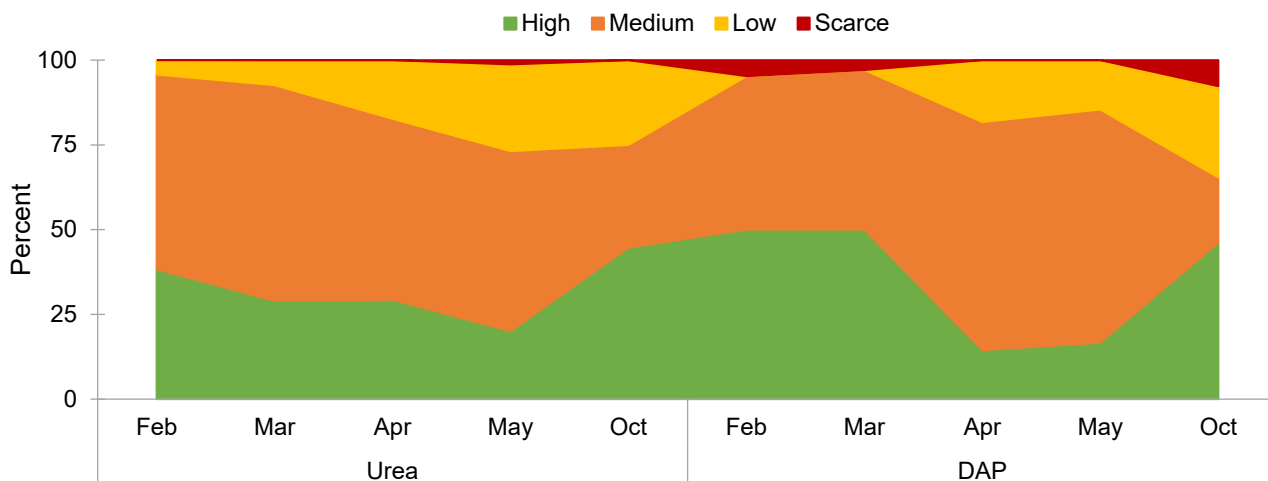
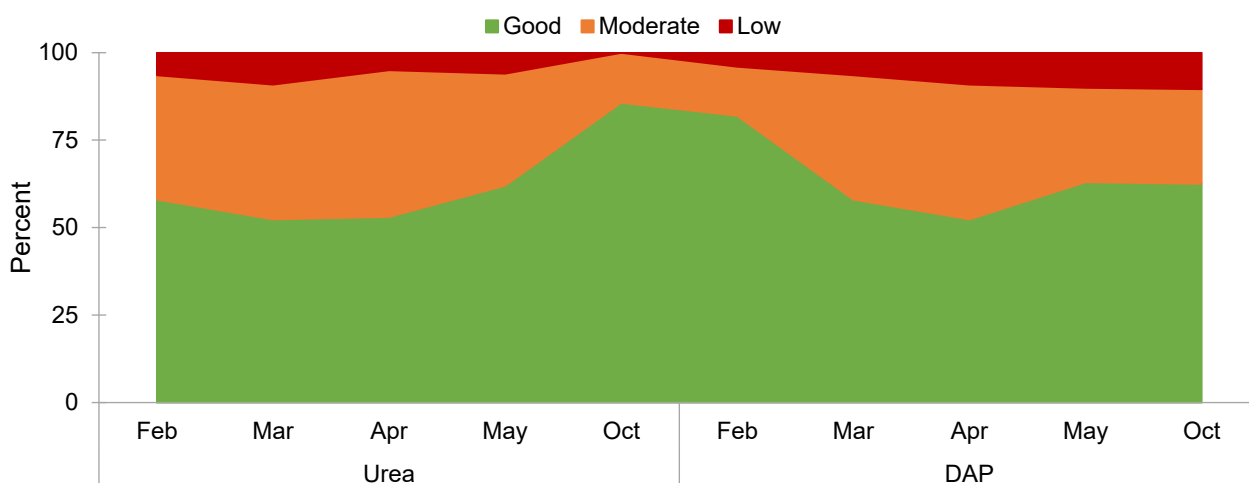


Figure 23 shows the perceived quality of fertilizers from February/May to October 2025. In October the share of traders rating Urea as a good quality increased from 62 percent in May to 86 percent in October, while the percentage of traders rating DAP as a good quality remained the same between May and October.

**Figure 23:** Fertilizers quality scores, February/May - October 2025



## Diesel and Petrol

Fuel prices showed a general decline across both regular and parallel markets in October. Petrol and diesel prices dropped noticeably in early October before stabilizing toward the end of the month. The parallel market prices for both fuels remained consistently higher than regular market prices. Overall, October marked a period of price stabilization following the sharp increases observed in August and early September (Figure 24).

**Figure 24:** Local fuel prices, SDGs/Liter, monthly average, February – October 2025

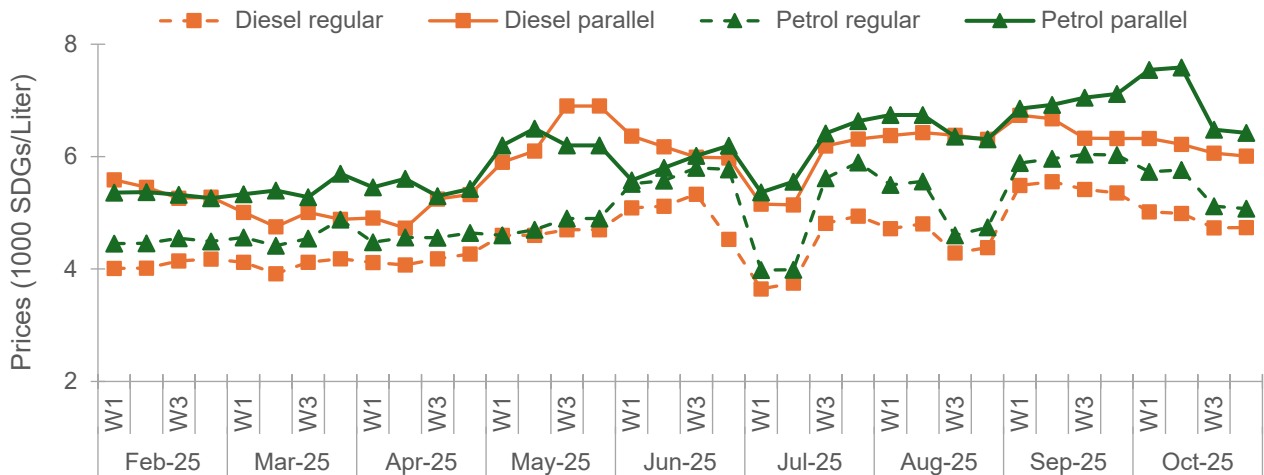
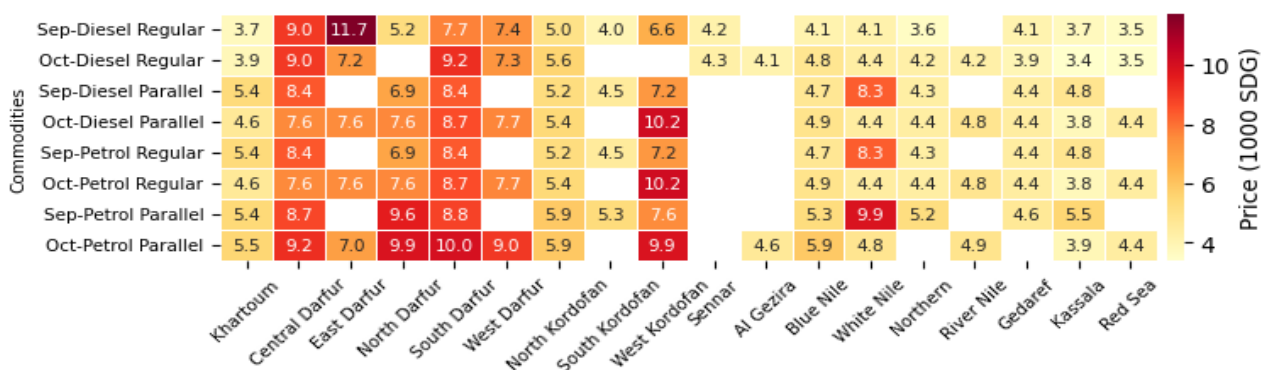


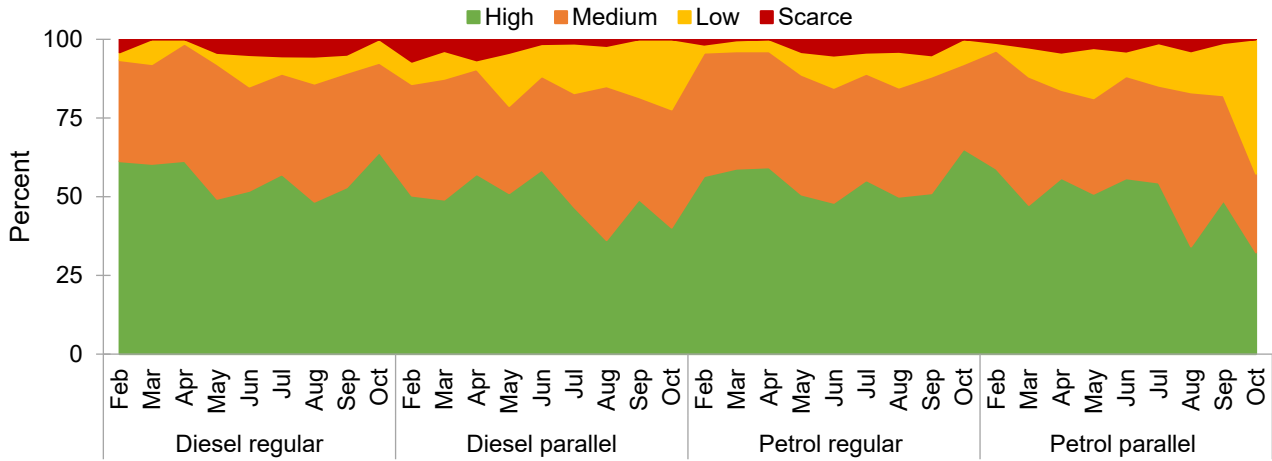
Figure 25 shows the spatial and temporal dynamics of fuel prices across states. Fuel prices remained substantially higher in the Darfur states and West Kordofan state compared to other regions. However, notable variation is observed within the Darfur region: for example, the regular market price of diesel in East Darfur declined sharply from about 12k SDG per liter to around 7k SDG per liter, while in South Darfur it increased from roughly 8k to 9k SDG per liter. Both diesel and petrol prices in the regular and parallel markets rose in West Kordofan. In contrast, White Nile experienced a pronounced decline in both regular and parallel market petrol prices in October, apart from diesel prices in the regular market, which did not follow the same downward trend.

**Figure 25:** Fuel prices across states, 1000 SDGs/Liter, September – October 2025



Between September and October, traders' perceptions of fuel availability improved in the regular market but declined sharply in the parallel market. For diesel in the regular market, the share reporting high availability increased from 53 percent in September to 64 percent in October. In contrast, in the diesel parallel market, high availability fell from 49 percent to 40 percent, accompanied by a rise in low-availability reports. A similar pattern is observed for petrol: regular petrol high availability increased from 51 percent to 65 percent, while parallel petrol high availability declined significantly from 49 percent to 32 percent, with a notable rise in low-availability perceptions (Figure 26).

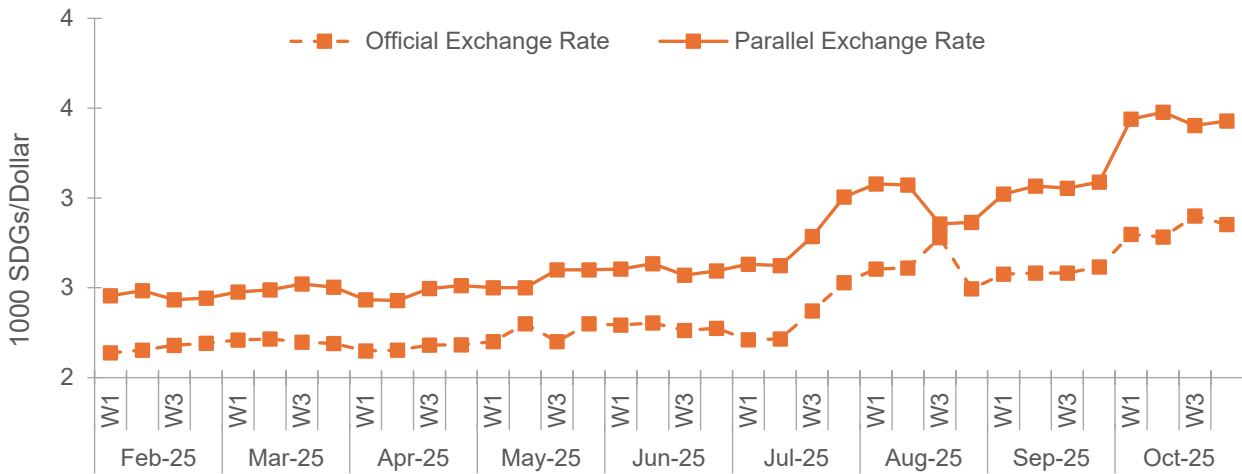
**Figure 26:** Fuel availability scores, February - October 2025



## Exchange Rates

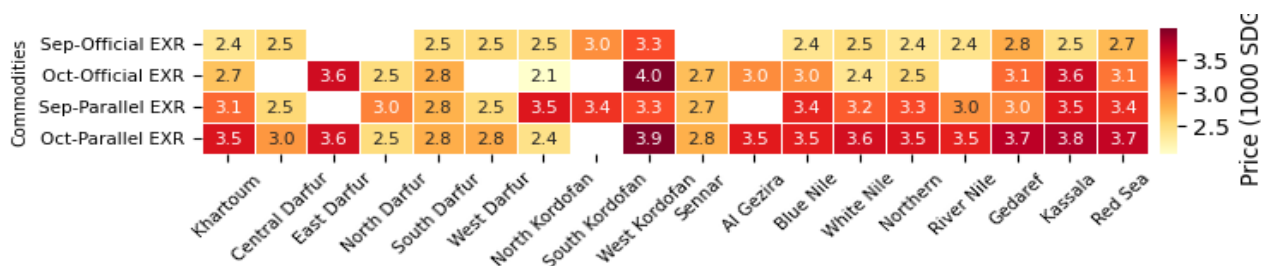
Between September and October, the parallel exchange rate continued to rise, indicating growing pressure in the informal market. After stabilizing around 3k SDG/USD in early September, the parallel rate increased steadily through the month and reached about 3.4–3.5k SDG/USD in October. In contrast, the official exchange rate remained relatively stable, fluctuating slightly and increased to around 2.8–2.9k SDG/USD in October from about 2.6k SDG/USD in September. The gap between the two markets, already large in September, widened further in October.

**Figure 27:** Exchange Rate, SDG/US Dollar, February –October 2025



The official exchange rate remained broadly stable in most states, fluctuating within the 2.4k–3.6k SDG/USD range, with modest increases observed in Khartoum, South Darfur, Blue Nile, Gedaref, Kassala, and the Red Sea between September and October 2025. In contrast, parallel market rates rose in many states, with the substantial increases recorded in West Kordofan, Kassala, White Nile, and the Red Sea, where rates reached 3.7k–3.9k SDG/USD. Spatially, eastern and northeastern states continued to exhibit the highest parallel exchange rates, whereas states such as North Darfur and North Kordofan maintained comparatively lower levels (Figure 28).

**Figure 28:** Units of 1000 SDGs to one US dollar exchange rates across states, September - October 2025



## Market Actors' Perceptions

In October 2025, 157 merchants across Sudan's 18 states were surveyed about market functionality and perceptions on trading activities. Out of the surveyed merchants, 47.1 percent were medium-scale traders, 9.6 percent large-scale traders, and 43.3 percent small-scale traders.<sup>1</sup>

Amid the escalation of conflict in parts of the country and the protracted challenges within market systems, the perceptions of merchants in October reflect challenges linked to supply chains, demand fluctuations, financial constraints and security concerns alongside uncertainty about storage facilities. Merchants also report changes in profits, tax and fees burdens, and uncertain future trading plans.

### Challenges Facing Merchants

#### Supply Chain and Logistics

The share of merchants reporting supply chain and logistical problems increased in October compared to the previous month, whereby 39.5 percent of the surveyed merchants reported supply chain and logistical challenges compared to 27 percent in September.

Figure 29 shows that these challenges were concentrated in North Darfur, Blue Nile, Central Darfur and South Kordofan states. The besiegement of El-Fasher in North Darfur and escalation of violence in the Darfur region and parts of Kordofan is the key driver behind the increased supply chain and logistical challenges. Specifically in South Kordofan, merchants report inadequate imports of commodities into the markets, leading to smaller supply of goods because of security concerns and high transportation costs.

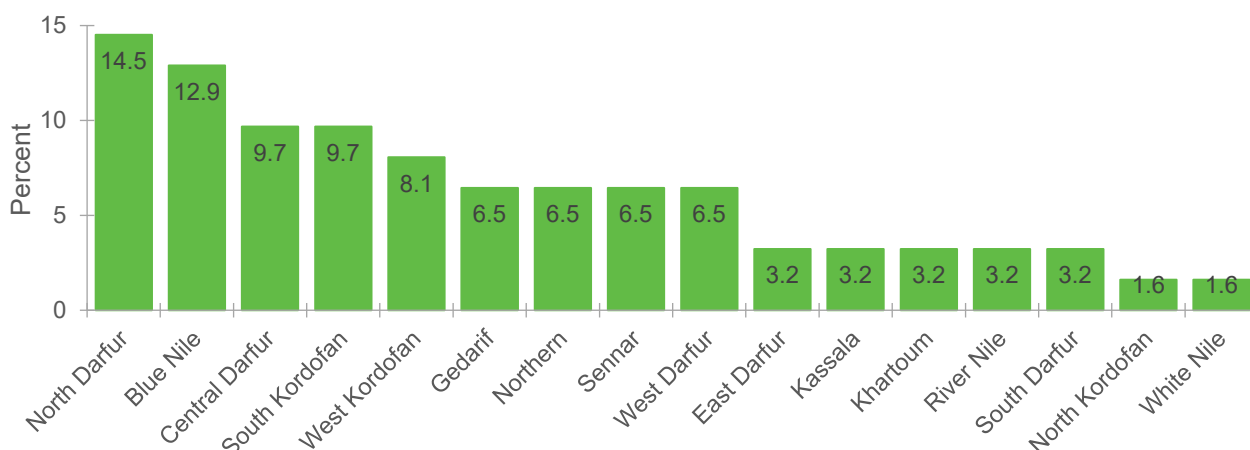
More broadly, merchants report that the lack of access to cash and exchange rate fluctuations, compounded by continued blockages of trade routes due to the rainy season, exacerbating the supply chain challenges both in terms of cost and transit time, particularly in the Darfur and Kordofan region, and the Blue Nile state. Merchants in River Nile, Khartoum, and Northern states report increased transportation costs, in Sennar report delays in import time alongside high transportation costs.

Overall, the surveyed merchants report continued supply chain challenges; namely high transportation costs, cash constraints and high transit and checkpoint fees, collectively pushing consumer prices upwards. In October, majority of merchants reported delays in transit time of commodities; especially in Sennar and Blue Nile states. In response, merchants have increased prices, reduced

<sup>1</sup> Traders were asked to self-identify the size of their business using five categories: largest in the market, large, medium, small, and smallest in the market. For reporting purposes, these were consolidated into three groups: large-scale, medium-scale, and small-scale traders.

imports and supply of goods, or in some states like West Kordofan and Blue Nile, collaborated with other merchants in sharing transportation costs.

**Figure 29:** Proportion (percentage) of merchants facing supply chain challenges, by state (N=62)



### Demand Conditions

In October, 51 percent of merchants reported changes in demand compared to 38 percent in the previous month. Changes in demand have been more pronounced in Blue Nile, North Darfur, and West Darfur states, while demand for commodities seemed relatively stable in Northern, Khartoum, Kassala and White Nile states.

Overall merchants in the Darfur region report declines in demand due to several factors: low purchasing power because of lowered income levels, the rainy season, and reduced cash availability in the market. In contrast, merchants in the Kordofan states except for North Kordofan report relative increases in demand because of increased local production of local crops and reduction of prices of certain commodities like potatoes and onions. In Red Sea and Gedaref merchants report reduced demand for commodities, while in Khartoum and Northern states some merchants reported increased demand for commodities because of influx of returnees.

### Financial and Liquidity Constraints

A higher proportion of merchants reported financial and liquidity constraints in October compared to September, whereby 35 percent of merchants reported financial constraints and restrictions compared to 29 percent in September. These results show a slight deterioration in access to cash, trade and transactions by merchants.

Regional disparities in terms of financial and liquidity constraints persist. Out of the surveyed merchants across 16 states, merchants in South Kordofan and Blue Nile states comprise the highest share of those reporting financial challenges (21.8 and 20 percent), followed by North Darfur (12.7 percent) and West Darfur (10.9 percent). In contrast, merchants in the Northern, Khartoum, Kassala, River Nile, and White Nile states report minimal financial and liquidity challenges, compared to other regions.

Overall, merchants across 15 of the 18 states reported financial challenges pertaining to cash and liquidity constraints. In South, Central, and West Darfur states, merchants reported that purchases and import prices are approximately 20 percent more expensive using mobile banking applications like Bankak, compared to cash purchases; thus, exerting higher cost of imports, transportation, and trade. Merchants in Gedaref, Northern and Kassala states similarly reported financial constraints, albeit, to a lower extent than merchants in Darfur and Kordofan regions, pertaining to limited cash-

caps from banks, poor electricity and network infrastructure impacting mobile banking platforms, and in Sennar, liquidity scarcity in the market as a result of large amounts of cash of money being invested in the harvesting season in the state.

Although liquidity and financial constraints impact daily labor hiring in markets, merchants report minimal challenges to hiring and paying labor and workers across Sudan's 18 states. Of the surveyed merchants, 37.6 percent do not hire any workers for their trade, 57.9 percent do not face challenges in hiring workers, while only 4.5 percent face challenges in hiring and paying daily workers; namely in Gedaref, Northern, River Nile, North Darfur, and South Darfur states.

### **Storage and Power Access**

Like September (92.7 percent), in October, 92.9 percent of merchants reported no storage or power challenges; showing stability in access to storage facilities and power. Northern and Blue Nile states report the highest proportion of merchants who do not face storage challenges (13.7 and 10.9 percent, respectively). Conversely, merchants in the Darfur region and Kordofan states report higher storage challenges compared to others, albeit minimally, because of reduced security and safety, with merchants in South Kordofan equally concerned about storage quality and pests.

### **Safety and Security**

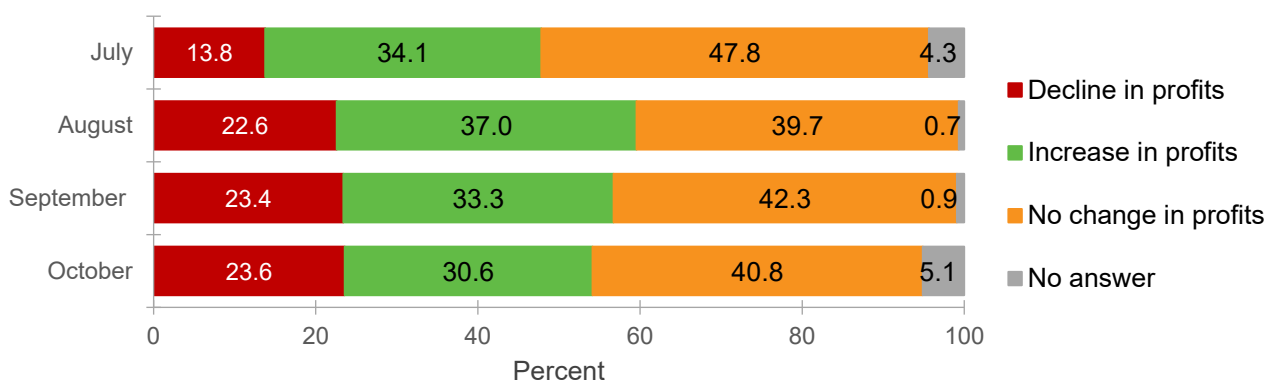
Market safety has marginally declined in October compared to September and August, whereby 5.1 percent of merchants report lack of safety and security in the markets (compared to 4.5 and 4.1, respectively). However, the safety and security concerns are not equally dispersed across the country, whereby the recent escalations of conflict in El-Fasher have led to 62.5 percent of merchants reporting security risks being from North Darfur. Armed combat and violence incidents have been mentioned as the key security concern by merchants in North Darfur. In Al-Jazirah and South Kordofan, merchants report incidental theft and looting within markets as a key threat to their trading activities.

### ***Profits and Profitability Trends***

Merchants across 18 states report constant or similar profit margins in October and September 2025. Figure 30 shows a smaller proportion of merchants report no change in profits in October (40.8 percent) compared to September (42.3 percent). The share of merchants reporting increases in profit margins slightly declined between September and October, dropping to 30.5 percent compared to 33.3 percent in September. Out of merchants reporting increases in profit margins, 17.8 percent report slight increases, while 12.7 report significant profit increases in October. Merchants reporting slight increase in profits are more concentrated in South Kordofan (17.8 percent), White Nile (10.7 percent), West Kordofan (10.7 percent) and Gedaref (10.7 percent), where merchants reporting significant increases in profits are concentrated in White Nile (35 percent), South Kordofan (25 percent) and West Kordofan (20 percent); signaling that merchants in these states recorded the highest increases in profits compared to other merchants.

The share of merchants reporting declines in profits has not changed between September and October, whereby approximately 23 percent of them report profit declines in both months. In October, out of those reporting declines, 13.4 percent report slight declines in profit margins, while 10.2 report significant profit decreases. Merchants in North Darfur and Blue Nile states comprise the largest shares of merchants reporting significant declines in profits (37.5 and 18.8 percent of merchants, respectively), while in West Darfur (28.5 percent), Blue Nile (19 percent) and Northern state (14.2 percent) report slight declines in profits. These results outline that merchants in these states witness the sharpest declines in profits compared to other states.

**Figure 30:** Percentage of merchants reporting changes in profits (July-October 2025)

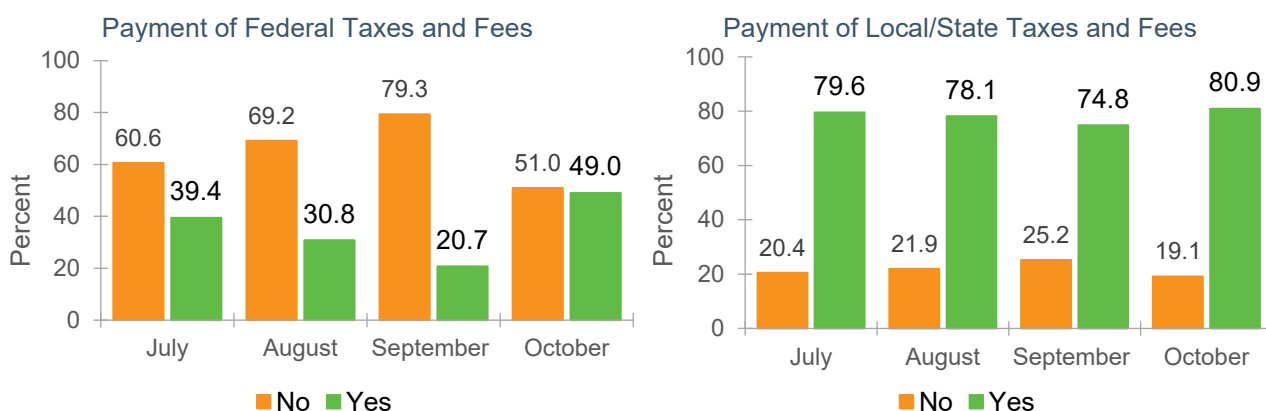


### Taxes and Fees

Merchants surveyed across 15 of Sudan's 18 states continued to report paying a mix of federal, state, and locality taxes and fees, with a larger share consistently paying state-level charges compared to federal ones. In October, 49 percent of merchants reported paying federal taxes and fees, while 51 percent did not. This represents a strong increase from September, when only 20.7 percent reported paying such fees. The most common federal payments include value-added tax on tradable goods, trade licenses, annual profit taxes, and customs duties (Figure 31).

At the state and local levels, compliance remained much higher. In October, 80.9 percent of merchants paid state or locality fees, compared to 74.8 percent in September. These payments typically relate to market organization and cleaning services, locality-level licensing, sanitation and health fees, and Zakat. In parts of Darfur and Kordofan, merchants also reported paying additional ad-hoc fees at irregular intervals, often linked to market safety and security.

**Figure 31:** Percentage of merchants reporting payments of taxes and government fees (July-October 2025)



State-level patterns continued to differ. Merchants in Northern state, Khartoum, and North Kordofan accounted for the largest shares of federal taxpayers, while those in Blue Nile, West Kordofan, South Kordofan, and North Darfur were more likely to report not paying federal taxes. Among those who paid federal taxes, 77.9 percent considered these payments beneficial for domestic trade, up from 73.9 percent in September, although many still noted that high taxation reduces profit margins and contributes to higher prices, ultimately weakening demand.

Similarly, for state and locality fees, merchants not paying in October were more concentrated in West Kordofan, South Kordofan, North Darfur, and Khartoum, while a large share of fee-paying merchants were in Northern state, Blue Nile, and White Nile.

## **Traders' Future Outlook**

Overall, 55.4 percent of the surveyed merchants plan to continue trading at current levels without any changes in volume or location. This represents a decline from 66.7 percent in September. At the same time, 28.7 percent plan to increase the volume of goods they trade, compared to 18 percent in September, with most of these merchants located in Blue Nile, Northern, and South Kordofan states.

Only 3.2 percent of merchants intend to change the type of goods they trade. These cases are mainly concentrated in West Darfur, Sennar, River Nile, and Blue Nile. A similarly small share, 2.6 percent, expect to reduce their trading volume in the coming one to three months, particularly in Gedaref, North Darfur, and West Darfur. In addition, 1.3 percent of merchants plan to move to different markets, and 6.4 percent remain uncertain about their plans over the next one to three months. This level of uncertainty has increased compared to 4.5 percent in September.

---

## **ABOUT THE AUTHORS**

**Tarig Rakhy** is a Research Analyst in IFPRI's Development Strategy and Governance (DSG) Unit, based in Doha, Qatar. **Hala Abushama** is a Research Analyst in IFPRI's DSG Unit, based in Cairo, Egypt. **Shima Mohamed** is a Research Analyst in IFPRI's DSG Unit, based in Cairo, Egypt. **Halefom Yigzaw Nigus** is a Research Collaborator in the DSG Unit of IFPRI, based in Addis Ababa, Ethiopia. **Khalid Siddig** is Senior Research Fellow in IFPRI's DSG Unit and the Leader of IFPRI's Sudan Strategy Support Program, based in Nairobi, Kenya and an Associate Professor at Khartoum University, Sudan.

---

## **ACKNOWLEDGMENTS**

This research was supported by the Netherlands Embassy for Sudan.



Ministry of Foreign Affairs

The Sudan Strategy Support Program (SSSP) is managed by the International Food Policy Research Institute (IFPRI). This publication has been prepared as an output of the SSSP and has not been independently peer reviewed. Any opinions expressed here belong to the author(s) and are not necessarily representative of or endorsed by IFPRI.

**INTERNATIONAL FOOD POLICY RESEARCH INSTITUTE**

*A world free of hunger and malnutrition*

**IFPRI is a CGIAR Research Center**

IFPRI Sudan, Arab Organization for Agricultural Development (AOAD), 7th Amarat Street | P.O. Box 474 – 11111 | Khartoum, Sudan

Email: [ifpri-sudan@cgiar.org](mailto:ifpri-sudan@cgiar.org) | <https://sudan.ifpri.info/>

© 2025, copyright remains with the author(s). All rights reserved.