



INTERNATIONAL
FOOD POLICY
RESEARCH
INSTITUTE

IFPRI

2018

ANNUAL REPORT





CONTENTS

Letter from the Board Chair and Director General	4
Strategic Research Areas.....	6
Fostering Climate-Resilient and Sustainable Food Supply.....	7
Promoting Healthy Diets and Nutrition for All.....	8
Building Inclusive and Efficient Markets, Trade Systems, and Food Industries.....	9
Strengthening Institutions and Governance.....	10
Transforming Agricultural and Rural Economies.....	11
<i>Feature: Supporting evidence-based policymaking at the country and regional level</i>	<i>12</i>
Cross-Cutting Theme on Gender	14
Engagement	15
IFPRI in 2018.....	16
2018 and 2017 Financial Statements.....	17
Financial Contributors and Partners.....	18

Letter from the **BOARD CHAIR** and **DIRECTOR GENERAL**

Progress toward achieving the Sustainable Development Goal of ending hunger and malnutrition was slowed in 2018 by continuing conflicts, an escalation of trade disputes and isolationist politics, and increasing impacts of climate change. This is a somber reminder that greater global effort is needed. With its continued commitment to meeting critical global goals, IFPRI is more dedicated than ever to accelerating progress toward reducing poverty and ending hunger and malnutrition sustainably.

Throughout 2018, IFPRI researchers worked to generate high-quality evidence and research to help decisionmakers tackle difficult challenges. IFPRI's work with partners helped to develop and tailor knowledge to local contexts, build human and institutional capacity, and support development strategies in Bangladesh, China, Ethiopia, Ghana, India, Malawi, Nepal, Nigeria, Pakistan, Senegal, Uganda, and many other countries that are working to turn the tide on poverty and malnutrition. This report highlights examples of how IFPRI is making a difference around the world.

Our global event on Accelerating the End of Hunger and Malnutrition, convened by IFPRI with FAO in Bangkok, Thailand, was a highlight of 2018. Attended by more than 600 global leaders, experts, stakeholders, and high-level decisionmakers from around the world, this three-day conference created a forum for exploring new ideas and innovations, identifying opportunities to scale up successful actions, and catalyzing cooperation and cross-sectoral learning around critical lessons to end hunger and malnutrition.

IFPRI's staff members, more than 40 percent of whom are based "on the ground" in developing countries, collaborate across disciplines and conduct research in more than 50 countries. IFPRI's researchers published 357 peer-reviewed publications in 2018, and the Institute remains number one among agricultural economics departments in Research Papers in Economics (RePEc) rankings.

IFPRI remains financially sound. The Board of Trustees received another successful external audit of the Institute's finances and continues to provide strong governance oversight.

In the coming year, IFPRI will continue providing research and evidence for sound policymaking, building partnerships, and strengthening the capacity needed to accelerate progress to achieve the Sustainable Development Goals.

Mari Pangestu
Chair, Board of Trustees

Shenggen Fan
Director General

BOARD of **TRUSTEES**

Mari Pangestu*, Chairperson, Indonesia

Nancy Birdsall*, United States

Derek Byerlee, Australia

Dacian Julien Cioleş, Romania

S. Mahendra Dev*, India

Ismahane Elouafi, Morocco / Canada

Shenggen Fan, Director General, Ex Officio, China

Marcos Sawaya Jank, Brazil

Brave Rona Ndisale, Malawi

Anna Taylor, United Kingdom

Emorn Udomkesmalee, Thailand

**Executive Committee Members*



NEW RESEARCH AREAS

IFPRI launched three cutting-edge research initiatives in cross-disciplinary areas that will contribute to critical advances in strategic research areas.

With the growing impact of climate change, IFPRI's **Knowledge Lab on Climate-Resilient Food Systems** will identify and deploy innovative approaches to achieving resilient food systems. The Knowledge Lab will bring experts, stakeholders, and decisionmakers together to build expertise, conduct collaborative research, and develop partnerships for impact in achieving the SDGs.

As the world rapidly becomes more urban, IFPRI's new research program on **Urban Food Systems for Better Diets, Nutrition, and Health** will guide policymakers and other key actors in designing and implementing effective food system policies to support healthier diets and optimal nutrition and health for the urban poor. Research will include in-depth case studies in cities of all sizes in low- and middle-income countries around the world.

Food Industries for People and Planet will expand traditional ways of thinking about the global food system and provide evidence-based policy assessments aimed at making agrifood industries and food systems healthier and more sustainable. A broad multistakeholder consortium will work toward making food systems a source of dynamic, inclusive job growth and more efficient in meeting global food and nutrition needs.

Strategic RESEARCH AREAS



IFPRI's work is built around a set of five strategic research areas that address the world's most critical food policy issues. To advance knowledge and practice across these strategic areas, IFPRI partners closely with public institutions, the private sector, nongovernmental organizations, governments, farmers' organizations, donor agencies, and research institutions and academia, as well as with other CGIAR centers. IFPRI pursues many of its core themes jointly with support of partners through the CGIAR Research Programs. Through its leadership of two CGIAR Research Programs—Policies, Institutions, and Markets (PIM) and Agriculture for Nutrition and Health (A4NH)—and contributions to several others (see box), IFPRI plays a key role in cross-center research and collaboration. IFPRI maintains a strong regional and country presence to respond to demand for food policy research and deliver holistic support for country-led development. The following are a few highlights from our work in 2018.

IFPRI AND CGIAR RESEARCH PROGRAMS

The CGIAR Research Programs promote cooperation and synergies across the CGIAR network. CGIAR collaboration affords the opportunity to combine IFPRI's strengths with the capacity of other CGIAR centers and their partners to enhance the impact of their work. IFPRI leads two CGIAR Research Programs: Policies, Institutions, and Markets (PIM) and Agriculture for Nutrition and Health (A4NH). PIM supports research for sound policies, robust institutions, and well-functioning markets that help poor farmers, both men and women, improve their lives; produce nutritious and affordable foods; and protect the soil, water, and biodiversity in rural landscapes. PIM houses the CGIAR Collaborative Platform for Gender Research, which aims to increase the visibility and impact of gender research. A4NH helps realize the potential of agricultural development to deliver gender-equitable health and nutritional benefits to the poor. The HarvestPlus program works to end "hidden hunger" (micronutrient deficiencies) through biofortification of staple crops. A new Platform for Big Data in Agriculture, co-led by IFPRI and the International Center for Tropical Agriculture (CIAT), aims to harness the capabilities of big data to accelerate and enhance the impact of international agricultural research. IFPRI also contributes to the CGIAR Research Programs on Climate Change, Agriculture and Food Security (CCAFS) and Water, Land and Ecosystems (WLE), as well as the Genebank Platform.

Fostering Climate-Resilient and Sustainable Food Supply

As growing resource scarcity, climate change, population growth, and changing diets impact our food systems, understanding the challenges and developing well-targeted policies and innovative technologies can help address food and nutrition security sustainably.

- The Global Futures and Strategic Foresight initiative models the impacts of climate change and other long-term drivers on agriculture, food security, health, and environment using the IMPACT system of modeling tools. 2018 analyses include “Options for Keeping the Food System within Environmental Limits,” which projects a 50-90 percent increase in the environmental impacts of food production by 2050, without mitigating measures; and “Risk of Increased Food Insecurity under Stringent Global Climate Change Mitigation Policy,” which finds that stringent mitigation measures could reduce food security.
- An influential paper on low-carbon development strategies for the Philippines looked at four alternative energy scenarios. Based on this evidence, Philippine policymakers called for a carbon tax to promote renewable energy sources.
- Major progress toward the development of science-based, functional biosafety systems in partner countries was supported by the Program for Biosafety Systems. Biosafety policy reforms were enacted in Tanzania and Ghana.
- ASTI (Agricultural Science and Technology Indicators), which provides open-access data and analysis on agricultural research investment and capacity in developing countries, completed data collection in Africa and South Asia and produced a set of fact sheets on African trends. ASTI also launched a new strategy focused on countries’ ownership of their data, analysis, and outreach.
- Air pollution was shown to lower human intelligence and worsen respiratory disease. In a first-of-its-kind study in China, continued exposure to air pollution was linked to declines in verbal and math scores, with implications for development potential. In India, crop residue burning was shown to increase the risk of acute respiratory infection threefold, with a cost of US\$153 billion over a 5-year period. Reducing air pollution could yield major health and economic benefits.
- A collaborative effort with the Indian Council of Agricultural Research completed surveys in all Indian states on variety adoption of major crops, including rice, wheat, and pulses. More than 30,000 farmers participated. Data collected are being used to examine the role of rice varieties in the groundwater crisis in Punjab, the success of basmati varieties in north India, and for an analysis of India’s pulse seed system.
- Climate Smart Investment Strategies and Action Plans for South Asia developed an analytical tool to help minimize salinity-induced income risks to the farm systems of coastal Bangladesh. The project team also worked to develop an investment plan for scaling up climate-smart interventions in India’s Telangana State.

Promoting Healthy Diets and Nutrition for All

Access to nutritious, affordable, and safe foods is essential for all individuals to meet their full potential. IFPRI's research on healthy food systems focuses on improving diet quality and nutrition outcomes for the poor—particularly women, adolescent girls, and children.

- Bangladesh committed to scaling up the pilot ANGeL (Agriculture, Nutrition, and Gender Linkages) project at the national level, based on positive results from the pilot study led by IFPRI. ANGeL tested the impacts of trainings for men and women designed to promote agricultural diversity, increase farm household incomes, improve nutrition, and empower women. The scale-up will incorporate the most effective model, which included a combination of trainings for men and women in farm households on improved agricultural production practices for high-nutritive-value crops, nutrition, and gender sensitization.
- An evaluation of a nutrition and agriculture intervention integrated into childcare centers showed benefits for the diets, nutrition, and development of young children in Malawi. This evidence informed the design of the government's country-wide scale-up of the nutrition-sensitive agriculture and early childhood development intervention.
- In Bangladesh, complementing cash transfers with nutrition behavior change communication (BCC) resulted in large reductions in child stunting (by about 7 percentage points), and the program boosted both maternal knowledge of iron deficiency and children's consumption of nutrient supplements. Based on these results, the government's new program for pregnant and lactating women, to be rolled out in 2019, will provide cash transfers and BCC.
- The ARENA (Advancing Research on Nutrition and Agriculture) project showed that reductions in child stunting are strongly associated with the consumption of animal-sourced foods, including dairy products. Other work from this project shows that least-cost diets vary with economic development, that dairy consumption is low in many poor countries, and that markets play a key role in delivering nutritious foods even for poor and remote communities.
- POSHAN (Partnerships and Opportunities to Strengthen and Harmonize Actions for Nutrition) in India supported NITI Aayog, the government's policy think tank, as well as district- and state-level discussions around nutrition data. Work on the national-level nutrition interventions in the Integrated Child Development Services scheme was shared with the National Nutrition Council to help rethink the basket of supplementary foods in that program.
- The Forum for the Transformation of Food Systems and the Reduction of Overweight and Obesity in Latin America and the Caribbean provides a space for exchange of knowledge on how food systems can help tackle overweight and obesity by ensuring that consumers have access to nutrient-rich foods, controlling the supply of low-priced energy-dense and nutrient-poor processed foods, and improving the food environment of vulnerable populations.
- The HarvestPlus program, which uses biofortification to breed higher levels of essential micronutrients into staple crops, published two key studies from India establishing the efficacy of iron and zinc biofortification to improve health and nutrition. Biofortified high-iron pearl millet significantly improved nutrition and cognitive performance of Indian adolescents who consumed this crop, indicating that it can stem the negative effects of iron deficiency, and potentially increase their success at school. And vulnerable young children who ate foods prepared with zinc-enriched wheat spent significantly fewer days sick with common infections.

Building Inclusive and Efficient Markets, Trade Systems, and Food Industries

Ending hunger and malnutrition requires efficient and equitable markets that are accessible to smallholders, meet consumer demand, and support environmental sustainability.

- The complex impacts of climate change on agricultural trade were examined using a new generation of quantitative models. Results highlight trade's role in mitigating the negative impacts of climate change on food security and reveal the shifting global pattern of comparative advantages in agriculture driven by trade and climate change.
- In Guatemala, research in support of a national program to prevent chronic malnutrition led to the adoption of new information technologies (text messaging) by local authorities to monitor key interventions. This work also helped to prioritize donor investment across Guatemala based on need and potential.
- CERES2030, a multi-organizational partnership led by IFPRI, was launched to review the evidence on possible pathways to SDG2 and is undertaking new research to estimate the cost of ending hunger sustainably.
- A new methodology for measuring food loss and waste at different stages of the value chain, including the processing, distribution, and retail sectors, was applied in Ecuador, Guatemala, Honduras, Peru, China, Ethiopia, and Malawi. Together with partners, IFPRI is making the methodology and toolkit publicly available on the Technical Platform on the Measurement and Reduction of Food Loss and Waste.
- IFPRI's research on agricultural insurance in India found potential for bundling climate-smart technologies with insurance, in this case conditioning payouts on not burning crop residues, to help farmers manage risk in India. Evaluation of India's heavily subsidized national agricultural insurance program showed that farmers put a high value on the insurance and would be willing to pay significantly higher premiums for policies that provide payments in a timely and guaranteed manner.
- IFPRI maintains the global Food Security Portal and portals for Africa south of the Sahara and India, which provide open-access food price and food security data. In 2018, the global portal's function as an early warning system for food crises was expanded to include a hub for easy access to all key early warning, early action systems.



Strengthening Institutions and Governance

Sound institutions, effective governance, and accountability are fundamental to achieving food security, growth, and rural transformation and to ensuring inclusion of poor and vulnerable populations.

- Devolution—a comprehensive form of government decentralization—has potential to reduce inequalities and improve service delivery. A study in Ghana found that devolution in the agricultural sector increased the engagement of local citizens in project design; but financial constraints hindered service delivery and proper staffing. This has important implications for other countries, such as Kenya and Zambia, that are implementing similar reforms.
- A survey and study of more than 800 informal traders in Lusaka, Zambia, revealed that willingness to pay taxes was higher among those who traded in markets where services (water, electricity, sanitation) were better. Findings from a vote-choice experiment found that even among a relatively poor segment of the population, paying taxes can affect an individual's demand for representation by policymakers.
- A study in Ethiopia found that larger expected land inheritances reduced the likelihood that rural youth will migrate permanently to faraway places or urban areas, and increase the likelihood of employment in agriculture, especially in relatively remote areas. The study suggests that improving youth access to land, for example, through rental markets, can be useful for constructive engagement in agriculture.
- An experiment in Uganda rewarded teachers for student performance in a Pay for Percentile incentive scheme, as a means to improve teacher performance and reduce school dropout and grade-repetition rates. School attendance increased, more boys took the primary leaving exam, and test scores improved for some students in schools with textbooks. Overall, teachers included in the program gave more effort. This work provides evidence that pay-for-performance policies can improve government service delivery.
- Behavioral games related to collective resources have been found to strengthen collective action through experiential learning. An influential article showed that groundwater games had a significant positive effect on communities adopting rules governing groundwater. The Foundation for Ecological Security, an Indian NGO, has now applied groundwater games in 200 villages and is training other interested NGOs and government departments as one of the key tools of the Promise of the Commons initiative.
- Researchers supported the development of a Global Food Security Strategy transition framework for USAID, helping to design indicators for monitoring country progress toward sustainable food security, including level of development, country capacity, and country commitment. IFPRI created an easy-to-use scorecard for capturing these indicators that has been adopted by USAID and includes a range of governance indicators recommended by IFPRI as most representative of country capacity.

Transforming Agricultural and Rural Economies

Development strategies and agricultural policies that promote inclusive rural growth can pave the way for the transition from low-income, subsistence farming to more productive and profitable rural economies.

- A new project to collect food security and nutrition data in Papua New Guinea for the first time surveyed over 1,000 rural households in four provinces. On average, diets are seriously deficient in calories and protein, and climate variations such as El Niño lead to serious shortfalls. Findings will help guide assistance programs in the country, and point to the need for a multisectoral approach to building food system resilience.
- In Tanzania, economic activity in rural areas is changing, with rapid employment growth in the informal sector. IFPRI researchers used the country's first nationally representative survey of micro, small, and medium enterprises to learn more about these businesses. They found a few highly productive small businesses that could help lead to rural transformation, and recommended targeting these firms for financial and other services.
- The Cereal Systems Initiative for South Asia (CSI-SA) launched a study in India's Odisha State to identify policies that will support the emergence and growth of a service economy for agricultural machines. Incentivizing machine use, rather than providing machine subsidies, appears to be a promising approach to increasing mechanization.
- A study on structural transformation for the Agricultural Transformation and Market Integration project in Southeast Asia found that labor is not exiting agriculture as fast as agriculture's share of value-added is declining in the region. Despite economic growth, rural-urban migration, and agricultural diversification, a disproportionate share of the labor force remains in agriculture. Greater investment in rural infrastructure, such as irrigation, and R&D is required to accelerate productivity growth.
- As China's role in international development grows, a new report examines the China-Africa partnership, exploring its history and scope and outlining policies to develop an integrated action plan to promote effective cooperation to modernize African agriculture.
- New studies on the potential of digital extension methods in Uganda and Ethiopia, such as use of videos, informed efforts in both countries to reform and modernize their public extension systems.
- The Bhoochetana program in the Indian state of Karnataka has been introducing innovations to improve yields and soil fertility. IFPRI researchers initiated an impact assessment to understand the extent and pattern of adoption of various program components and their effect on farmers' well-being.
- A project with the Indian Council of Agricultural Research focuses on estimating the rate of return on investment in India's farm science centers, along with the impact of the centers on farmers' economic welfare.





Supporting evidence-based policymaking at the country and regional levels

IFPRI's country strategy support programs and regional programs build evidence and capacity for agricultural transformation at the country level.

- ReSAKSS provided critical support to the Comprehensive Africa Agriculture Development Programme (CAADP), helping to deliver the inaugural CAADP Biennial Review Report and the African Agricultural Transformation Scorecard, which measures progress toward Malabo Declaration goals. The *ReSAKSS 2017-2018 Annual Trends and Outlook Report* highlights the critical role social protection can play in achieving Malabo goals. ReSAKSS also supported the formulation of next-generation national agriculture investment plans in 19 African countries and began providing support in 7 additional countries.
- The Bangladesh Policy Research and Strategy Support Program carried out an assessment of the potential of Bt brinjal (eggplant) to increase farmer incomes, reduce poverty, and improve the health and nutrition of farmers. Results show reduced pest infestation and pesticide use, greater production and yields, and higher revenues and net profits for farmers.
- Egypt's Takaful and Karama conditional cash transfer program was shown to have significant positive impacts on household consumption, dietary patterns, and poverty. Transfers were spent on children's education and higher-quality food, particularly fruit and meat. However, the transfers reduced women's control over decision-making. In response to the positive findings, the government adopted recommendations from the evaluation to improve targeting by increasing awareness about the program among the very poor and including the program as part of the national social protection policy.
- The Punjab Agricultural Policy developed by the Pakistan Strategy Support Program with partners was passed by the provincial government and is now Punjab's official agricultural policy. This policy was based on a review of similar policies in other countries and has generated substantial local interest and debate.
- In *The Economics of Teff: Exploring Ethiopia's Biggest Cash Crop*, IFPRI researchers highlight the enormous potential of this traditional crop. The book recommends ways to scale up production and markets to expand opportunities for Ethiopia's small farmers.
- The Project d'Appui aux Politiques Agricoles (PAPA) completed a thorough data collection effort in Senegal, providing detailed information on agricultural subsectors at all stages of the value chain, from input provision to food consumption, to support evidence-based policymaking. The project strengthened government and civil society capacity through a local analytical network, and supported development of a knowledge management system to improve access to agricultural information.
- *The Cocoa Coast: The Board-Managed Cocoa Sector in Ghana* looks at how the government's interest in maintaining high-quality cocoa exports has contributed to the sector's success.
- In Malawi, fluctuations in the price of maize—the country's most important staple crop—are critical to the country's overall food security. To support well-functioning markets, the Malawi Strategy Support Program produces a Monthly Maize Market Report, which provides clear and accurate daily maize price data for use by farmers, traders, consumers, humanitarian agencies, and other agricultural stakeholders.



- Since Nigeria launched its Agricultural Sector Food Security and Nutrition Strategy in 2017, with support from IFPRI's Nigeria Strategy Support Program (NSSP), NSSP has provided the government with guidance in preparing for the launch of a national food consumption and nutrition survey in 2019.
- The Malabo Montpellier Panel launched two reports—*Mechanized: Transforming Africa's Agriculture Value Chains* and *Water-Wise: Smart Irrigation Strategies for Africa*—that highlight the remarkable progress and potential of mechanization and irrigation for agricultural transformation in Africa.
- AGRODEP (the African Growth and Development Policy Modeling Consortium) launched a trade and regional integration expert group to provide policy analysis in support of the African Continental Free Trade Area. The group will also help to lead the production of a new annual report, the *Africa Agriculture Trade Monitor*.
- The Central Asia Program provided an annual training course in applied econometric analysis

to enhance the research and analytical capacity of researchers from Kazakhstan, Kyrgyzstan, Tajikistan, and Uzbekistan and continued collaboration with regional partners to promote knowledge exchange.

- The Technical Assistance and Research for Indian Nutrition and Agriculture (TARINA) project is exploring the effectiveness of deworming of goats for improving the health of the animals, and thus improving women farmers' incomes in Bihar, India.
- New research is examining the economic activity of people in and around Rohingya refugee camps in Bangladesh. Trade and service sectors predominate, with notable movement in and out of the camps by customers, hired workers, and businesses. A survey of community leaders found that the employment rate of Rohingya adult males in the camps is around 5 to 6 percent, and they are consistently paid less than locals. However, a high level of economic interaction and trust between the two populations suggests that there is scope for improving welfare.



Cross-Cutting Theme on Gender

Women, working together with men, play a critical role in agricultural growth, food security, and nutrition. IFPRI's work considers the role of gender relations in achieving many development outcomes, with a focus on the potential of women's empowerment to drive change.

- The Women's Empowerment in Agriculture Index (WEAI) has been used to measure women's empowerment in agriculture among maize farmers in western Kenya and to explore correlates of women's empowerment to dietary quality across the life course in Bangladesh. The index is being used to monitor women's empowerment in 52 countries and by 86 organizations, including the Inter-American Development Bank, which plans to mainstream the index into land titling projects.
- The Gender, Agriculture, and Assets project (GAAP2) is working with 13 agricultural development projects to develop and validate a project-level WEAI (or pro-WEAI), a measure of women's empowerment suitable for diagnosing key areas of women's and men's disempowerment, designing appropriate strategies to address deficiencies, and monitoring project outcomes related to women's empowerment.
- To better understand the impacts of cash transfers on intimate partner violence in settings where polygamy is prevalent, IFPRI researchers used quantitative analysis and in-depth interviews to study Mali's Jigisémèjiri program of cash transfers (targeted primarily to men) accompanied by trainings. In polygamous households, the program decreased physical violence by 7 percentage points and also reduced emotional violence and controlling behaviors, but impacts in monogamous households were limited.
- Gender matters not just for technology adoption but also for how the benefits of technology adoption are distributed among household members beyond the actual uptake of the technology. New research on gendered aspects of small-scale irrigation technologies in Ethiopia, Ghana, and Tanzania offers a framework for examining what happens after technology adoption, highlighting the importance of women's control over the products and income resulting from new technologies.



Engagement

Building partnerships, communicating research, strengthening partners' capacity, and leveraging data are critical to achieving impact through IFPRI's strategic research areas.

CAPACITY STRENGTHENING

IFPRI implements its capacity strengthening strategy through its research, country, regional, and global programs and in collaboration with other CGIAR centers, CGIAR Research Programs, and international institutions. IFPRI's investments to strengthen the capacity of individuals, institutions, and policy systems add value by ensuring research results have impact and through a multiplier effect on local research capacity. Activities in 2018 included evaluation of policy processes; institutional reviews of food, agricultural innovation, and statistical systems; assessments of agricultural research and extension reforms; promotion of cross-country learning for agricultural and rural transformation; improvement of data policies; institute-wide tracking of capacity development progress; and development of recommendations on best practices. At the country level, support included policy analysis training programs, agricultural strategy development, and capacity needs assessments.



2018 GLOBAL FOOD POLICY REPORT

The *2018 Global Food Policy Report* takes a timely look at the impacts of greater global integration—including the movement of goods, investment, people, and knowledge—and the threat of current antiglobalization pressures. Drawing on recent work, IFPRI researchers and other distinguished food policy experts consider how trade, investment, migration, open data, developed country policies, and governance can be harnessed to benefit our global food system. The report highlights the potential of the global food system to deliver food security and nutrition for all.



COMPACT2025

Compact2025, an IFPRI-led initiative to accelerate progress toward ending hunger and malnutrition, continued to engage at global and country levels in 2018. Along with co-hosting the global event on Accelerating the End of Hunger and Malnutrition in Bangkok, Thailand, Compact2025 supported knowledge sharing through the bi-weekly News in Brief newsletter and Knowledge and Innovation Hub resources page. Compact2025 also provided technical support and capacity strengthening for using data to inform policy for Ethiopia's National Information Platform for Nutrition and Bangladesh's Governance Innovation Unit.

IFPRI *in* 2018

MEDIA

 **85,000** Twitter followers

 **182,093** Facebook likes

209,138
blog views

PROFESSIONAL RANKINGS

#1 among Agricultural Economics departments (source: RePEc)

#2 in the field of Agricultural Economics (source: RePEc)

PUBLICATIONS

357

peer-reviewed publications

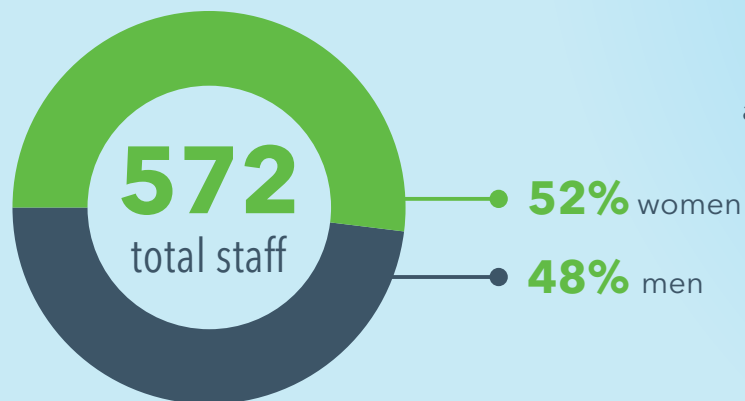
2,921,690

publication views (source: Google)

253,645

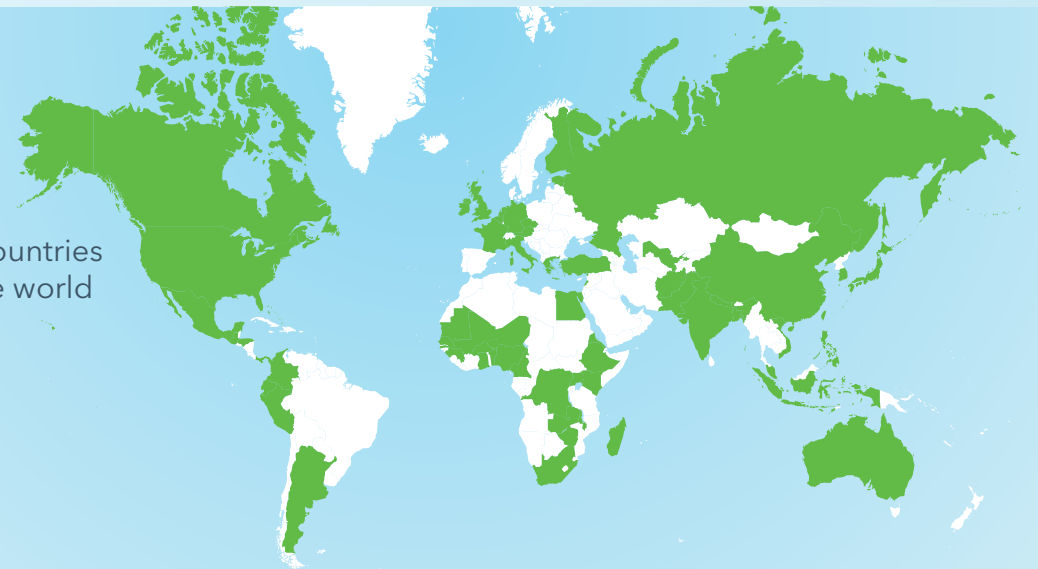
dataset downloads

IFPRI STAFF



IFPRI staff are from

63 countries around the world



2018 and 2017 FINANCIAL STATEMENTS

STATEMENTS OF FINANCIAL POSITION (in US\$ thousands)

	2018	2017
ASSETS		
Cash and cash equivalents	19,385	17,518
Investments	19,594	6,730
Advances, prepaids and other assets, net	8,762	12,945
Accounts receivable, net	19,525	25,701
Total current assets	67,266	62,894
Investments	69,383	71,167
Property and equipment, net	9,207	6,324
Total assets	145,856	140,385
LIABILITIES AND NET ASSETS		
Accounts payable and accrued expenses	6,347	7,264
Accrued vacation	3,915	3,583
Advance payment of CGIAR grant funds	14,094	16,142
Unexpended project funds	41,379	36,715
Amount held for HarvestPlus program	32,931	35,943
Total current liabilities	98,666	99,647
Deferred rent	12,635	5,786
Accrued postretirement benefits	5,743	5,615
Total liabilities	117,044	111,048
NET ASSETS WITHOUT DONOR RESTRICTIONS		
Board designated	748	778
Undesignated	26,574	25,816
Other net assets	1,490	2,743
Total net assets without donor restrictions	28,812	29,337
Commitments and contingencies		
Total liabilities and net assets	145,856	140,385

STATEMENTS OF ACTIVITIES (in US\$ thousands)

	2018	2017
REVENUES AND GAINS		
Window 1 & 2	39,382	34,128
Window 3	46,668	60,927
Bilateral	57,952	44,980
Total revenues and gains	144,002	140,035
EXPENSES AND LOSSES		
Research expenses	66,182	64,962
CGIAR collaborator expenses	28,562	31,995
Non-CGIAR collaborator expenses	34,306	29,292
General and administration expenses	15,179	14,453
Other expenses and losses	67	80
Total expenses and losses	144,296	140,782
Operating surplus (deficit)	(294)	(747)
FINANCIAL INCOME AND EXPENSES		
Financial income	1,312	1,353
Financial expenses	(290)	(277)
Surplus for the year	728	329
OTHER CHANGES IN NET ASSETS		
Unrealized gain (loss) on investment	(1,719)	476
Postretirement related changes	466	(205)
Other changes in net assets	(1,253)	271
CHANGE IN NET ASSETS WITHOUT DONOR RESTRICTIONS	(525)	600

Note: The above is a summary of the financial information for the 2018 and 2017 calendar years. The full statements are available on the IFPRI website (IFPRI.org).



2018 *Financial* CONTRIBUTORS *and* PARTNERS

IFPRI greatly appreciates the donors who supported IFPRI's research through their contributions to the CGIAR Fund, <https://cgiar.org/funders/>, without which our work would not be possible. Other donors supporting IFPRI's work are listed below.

AECOM, United States

African Center for Economic Transformation,
Ghana

African Development Bank (AfDB)

Agricultural Research Council of Nigeria

Amsterdam Institute for Global Health
and Development, Netherlands

Anonymous

Asian Development Bank

Associated Consulting Engineers, Pakistan

Association of Public and Land-grant
Universities (APLU)

Australian Centre for International
Agricultural Research

Australian Department of Foreign Affairs
and Trade (DFAT)

Bangladesh

Battelle Memorial Institute, United States

Belgium

Benckiser Stiftung Zukunft, Germany

Bill & Melinda Gates Foundation, United States

Bureau for Food and Agricultural Policy, South Africa
Canada

Center for Chinese Agricultural Policy, China

Centre Technique de Cooperation Agricole et Rurale
(CTA), Netherlands

CGIAR Fund

CGIAR Research Program on Agriculture for Nutrition
and Health (A4NH), led by IFPRI

CGIAR Research Program on Policies, Institutions,
and Markets (PIM), led by IFPRI

China

Cornell University, United States

CropLife International, Belgium

Development Alternatives, Inc. (DAI), United States

Digital Green, United States

Economic and Social Research Council, United
Kingdom

European Commission
 FHI 360, United States
 Food and Agriculture Organization of the United Nations (FAO)
 Ford Foundation, United States
 George Mason University, United States
 German Federal Ministry of Economic Cooperation and Development (BMZ)
 German Society for International Cooperation (GIZ) GmbH
 Government of Flanders, Belgium
 GRM International, United Kingdom
 HarvestPlus
 Helen Keller International (HKI), United States
 Imperial College, United Kingdom
 India
 Innovations for Poverty Action, United States
 Institute for Human & Machine Cognition, United States
 Institute of Development Studies, United Kingdom
 Inter-American Development Bank
 International Center for Tropical Agriculture (CIAT)
 International Crops Research Institute for the Semi-Arid Tropics (ICRISAT)
 International Fund for Agricultural Development (IFAD)
 International Growth Centre, United Kingdom
 International Initiative for Impact Evaluation (3ie)
 International Institute for Sustainable Development, Canada
 International Institute of Tropical Agriculture (IITA)
 International Livestock Research Institute (ILRI)
 International Maize and Wheat Improvement Center (CIMMYT)
 International Water Management Institute (IWMI)
 INVEST-Honduras/Inversión Estratégica de Honduras
 Ireland
 Islamic Development Bank
 Italy
 Japan
 Johns Hopkins University, United States
 Korea Development Institute
 KPMG East Africa Ltd., Kenya
 London School of Economics, United Kingdom
 London School of Hygiene & Tropical Medicine, United Kingdom
 MacArthur Foundation, United States
 Mali
 Management Systems International, United States
 Massachusetts Institute of Technology, United States
 Mathematica Policy Research, United States
 Mayer Brown LLP, United States
 McDonald's Corporation, United States
 Mercy Corps, United States
 Michigan State University, United States
 Millennium Challenge Corporation, United States
 M. S. Swaminathan Research Foundation, India
 National Fadama Coordination Office, Nigeria
 National Science Foundation, United States
 Natural Resources Institute, United Kingdom
 The Nature Conservancy, United States
 The Netherlands
 Netherlands Organisation for Scientific Research (NWO)
 New Venture Fund, United States
 New York University, United States
 Norway
 OCP Foundation, Morocco
 Oxfam America
 Peru, Ministry of Agriculture
 QED Group, LLC, United States
 Regional Universities Forum for Capacity Building in Agriculture (RUFORUM), Uganda
 Research Triangle Institute, United States
 Russian Federation
 SNV Netherlands Development Organisation
 South Africa
 Switzerland
 Syngenta Foundation, Switzerland
 TechnoServe, United States
 Texas A&M University, United States
 Tufts University, United States
 UNICEF
 UNIQUE Forestry and Land Use GmbH, Germany
 United Kingdom
 United Nations Development Programme (UNDP)
 United Nations Economic Commission for Africa (UNECA)
 United States Agency for International Development (USAID)
 United States Department of Agriculture (USDA)
 University of Bonn, Germany
 University of California, United States
 University of Connecticut, United States
 University of Florida, United States
 University of Ghent, Belgium
 University of Manchester, United Kingdom
 University of Maryland, United States
 University of Oxford, United Kingdom
 University of South Carolina, United States
 University of Washington, United States
 Weber State University, United States
 West African Economic and Monetary Union (UEMOA)
 World Bank
 World Food Programme
 World Vision, Canada
 World Vision, United States



INTERNATIONAL
FOOD POLICY
RESEARCH
INSTITUTE

IFPRI

INTERNATIONAL FOOD POLICY RESEARCH INSTITUTE

A world free of hunger and malnutrition

IFPRI Headquarters

1201 Eye Street NW, 12th floor
Washington, DC 20005 USA
Phone: +1-202-862-5600
Fax: +1-202-862-5606
Email: ifpri@cgiar.org

IFPRI Africa

Titre 3396, Lot #2
BP 24063
Dakar - Almadies, Senegal
Phone: +221-33-869-9800
Email: ifpri-dakar@cgiar.org

IFPRI South Asia

NASC, DPS Road
Opp Todapur, Pusa, New Delhi 110012
India
Phone: +91-11-66166565
Fax: +91-11-66781699
Email: ifpri-newdelhi@cgiar.org

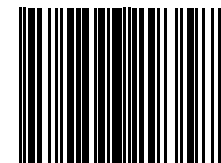
Copyright 2019 International Food Policy Research Institute. All rights reserved. Contact ifpri-copyright@cgiar.org for permission to republish.

www.ifpri.org | www.ifpri.info

Photo credits: Sarine Arslanian / Shutterstock.com, Emre Topdemir / Shutterstock.com, Jake Lyell / Alamy Stock Photo, freepik.com, G.M.B. Akash / Panos

DOI: <https://doi.org/10.2499/9780896293588>

ISBN 978-0-89629-358-8



9 780896 293588