

The Monthly Maize Market Report was developed by researchers at IFPRI Malawi with the goal of providing clear and accurate information on the variation of daily maize prices in selected markets throughout Malawi. The reports are intended as a resource for those interested in maize markets in Malawi, namely producers, traders, consumers, or other agricultural stakeholders.

### Highlights

- The average retail maize price decreased by 13 percent during April 2019 to MWK169/kg.
- The average retail maize price of MWK169 was 13 percent higher than the minimum farmgate price of MWK150/kg announced by MoAIWD in mid-April 2019, and MWK 62 higher than in April 2018.
- ADMARC sold maize in 14 of 16 markets monitored.
- Maize prices in Malawi during April were lower than in most eastern and southern Africa markets.

### Prices decreased in April 2019

The average retail maize price during the month of April was MWK169/kg. The overall average maize price decreased by 13 percent from March, with prices falling in all markets except Nsanje (Table 1). The declining prices are due to the onset of the main maize harvest in central Malawi.

This year's maize harvest is expected to increase by 24 percent compared to 2017/18 harvest according to the second round of 2018/2019 Agricultural Production Estimates (APES) released by the Ministry of Agriculture, Irrigation, and Water Development (MoAIWD) in April 2019.

By the end of April, retail prices in all markets except Chitipa, Karonga, Rumphu, Mzuzu, and Mitundu were higher than the minimum farmgate price of MWK150/kg announced by MoAIWD in mid-April 2019.

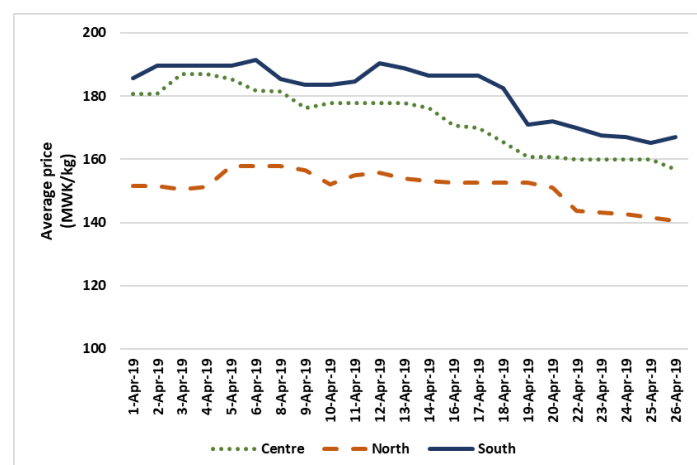
### Prices remain highest in the South

Maize prices were highest in the South, as is usually the case. The average price in the southern region was MWK21/kg higher than in the Centre. Similarly, prices in the central region were MWK9/kg higher than in the northern region by the end of April. Prices in all regions slightly increased during the first-half of April but gradually declined during the second-half of the month.

Table 1. Maize retail prices (MWK/kg) by market

Market	6-Apr-19	13-Apr-19	20-Apr-19	27-Apr-19	Change
Chitipa	160	140	140	140	↓ -13%
Karonga	148	148	140	131	↓ -11%
Rumphu	162	152	147	138	↓ -14%
Mzuzu	168	178	178	147	↓ -13%
Mzimba	155	163	163	150	↓ -3%
Salima	200	193	170	170	↓ -15%
Mchinji	165	163	158	155	↓ -6%
Mitundu	173	173	143	143	↓ -17%
Chimbiya	200	187	173	160	↓ -20%
Lunzu	200	200	180	177	↓ -12%
Mwanza	193	193	167	167	↓ -14%
Liwonde	220	210	177	177	↓ -20%
Luchenza	200	200	150	150	↓ -25%
Mulanje	160	157	160	157	↓ -2%
Chikwawa	210	210	210	180	↓ -14%
Nsanje	150	167	170	153	↑ 2%
<b>All markets</b>	<b>179</b>	<b>177</b>	<b>164</b>	<b>156</b>	<b>↓ -13%</b>

Figure 1. Daily average maize retail prices during April 2019



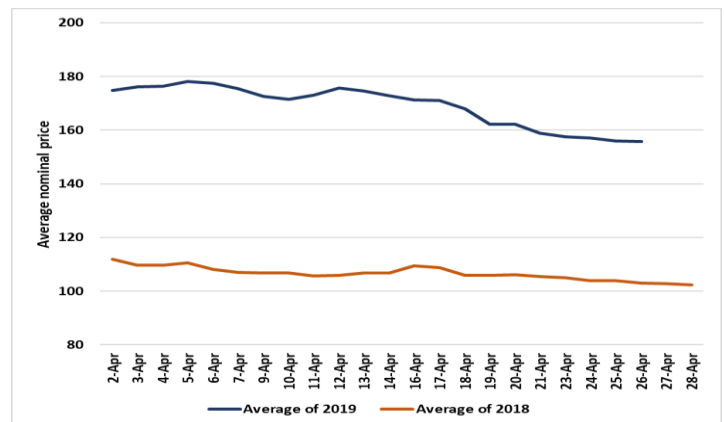
## ADMARC activities

Out of 16 markets IFPRI monitors, ADMARC sales were reported in 14 markets: only Lunzu and Liwonde markets did not report ADMARC sales during April. In the remaining markets, ADMARC was selling maize at MWK150/kg. No ADMARC purchases were reported in any of the 16 markets monitored.

### Price movements - April 2018 and 2019

Figure 2 compares the average nominal maize retail price in April 2018 and April 2019. On average, prices in 2019 were MWK62/kg higher than prices in 2018. Maize retail prices were also more stable during April 2018 than in 2019, as the end of April price decline in 2019 was sharper than in 2018.

Figure 2. Price movements in April 2018 and April 2019

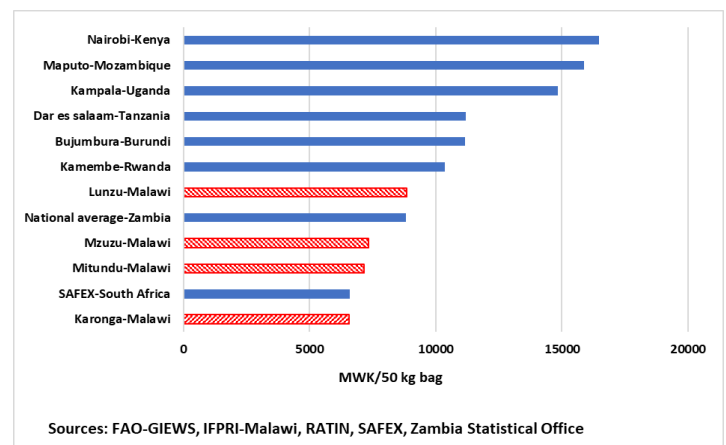


### Regional prices in April 2019

Figure 3 shows retail maize prices per 50kg bag in selected markets in Malawi and in eight other regional countries in late April. The highest price was reported in Nairobi, Kenya, followed by Maputo, Mozambique and Kampala, Uganda. Karonga, Malawi, recorded the lowest retail price during the month of April.

While maize prices in Malawi remain lower than in most eastern and southern Africa markets, retail prices in Malawi's Lunzu market were higher than the average price in Zambia. Prices in Mzuzu and Mitundu were also higher than on SAFEX, the main grain futures markets in South Africa.

Figure 3. Retail maize prices in selected markets in eastern and southern Africa (as of end April 2019)



### How data was collected

IFPRI has been monitoring retail maize prices and ADMARC activities in selected markets since November 2016. Currently, the data is collected from 16 markets across the country, with monitoring occurring six days per week, excluding Sundays. At least three monitors report data from each of the markets. Data is collected by means of automated short message service (SMS) with follow-ups made by telephone if necessary. The regional prices reported in Figure 3 are sourced from Food and Agriculture Organization's Global Information and Early Warning System (FAO-GIEWS), IFPRI-Malawi, the Regional Agricultural Trade Intelligence Network (RATIN), IFPRI Malawi, the Johannesburg Stock Exchange (JSE), and the Zambia Central Statistical Office.



For further information contact: Dennis Ochieng (D.Ochieng@cgiar.org) or Rosemary Botha (R.Botha@cgiar.org) at IFPRI Malawi.

To learn more about IFPRI Malawi's work, please visit:

<http://massp.ifpri.info> or follow us on <http://twitter.com/@IFPRIMalawi>