



Standing
Panel on
Impact
Assessment

SPIA Viet Nam Report 2024: *Global Ambitions, Sustainable Pathways*

Frederic Kosmowski, Thanh Binh Le, Simon Chavez, Ha Thu Nguyen, Phuong Nguyen, Davis Gimode, Monica Biradavolu, Johanne Pelletier, James Stevenson, Sujata Visaria

Feb 26th, Hanoi

Overview of the Report

The report presents:

- A synthesis of 78 agricultural innovations and 30 policy contributions in Viet Nam (2003–2023)
 - Estimates of the reach for 19 CGIAR-related innovations
 - Analysis of the geography of adoption
 - Socio-economic characteristics of adopters
-
- This report focuses on adoption, seen as a necessary, but insufficient conditions for impact.
 - The work of the CGIAR is built on partnerships
 - Two definitions:
 - An **innovation** is broadly defined as an approach or technology that incorporates CGIAR-related research or activities as inputs and is novel to its users
 - A **policy contribution** refers to CGIAR-related research or activities that can plausibly claim to have contributed to the development or improvement of policies, regulations, or institutions

Stocktaking Process

Synthesis document to identify innovations for inclusion into nationally representative surveys

This synthesis of 78 innovations is in the public domain

(A) Innovation	(B) CGIAR-related efforts for development and/or dissemination	(C) Description	(D) Observable feature	(E) Scale and location of activities	(F) Evidence of adoption	(G) Notes on known dissemination strategies/pathways
Genetically Improved Farmed Tilapia (GIFT) derived strains	1 - GIFT dissemination in 1994, 1996 and 1997 to RIA1 (Hanoi) 2 - GIFT dissemination in 1996 and 2006 to RIA2 (HCM) 3 - Enhancing community resilience to climate change by promoting smart aquaculture management practices along the coastal areas of North Central	GIFT are originally pure-bred lines of male tilapia that have two Y chromosomes, thus producing only male progeny. GIFT is a faster-growing strain of Nile tilapia (<i>Oreochromis niloticus</i>) improved through selective breeding and made available by Worldfish since 1988. The innovation is suitable for both small-scale and commercial aquaculture. By applying state of the art	Household has farmed hatchery-produced GIFT-derived tilapias. Identification using fish seed source (potential reach) or DNA	1 - TBD 2 - ~4000 breed broodstock released per year to hatcheries for commercial purposes 3 - Commune of Hoang	- Adoption was estimated at 17% of total tilapia seed production in Vietnam in 2001 (ADB, 2005) - RIA1 estimates GIFT-derived strains constitutes 40-50% of market - There are over 250 facilities involved in	- RIA1 and RIA2 provide broodstocks to provinces and local factory that produce fingerlings sold to farmers (~80%) and private companies (20%). Strains released are not necessarily given a name and can just be from be generation X.
Nutritious-system pond farming	Nutritious-system pond farming (NOW and FAFS CRP, 2014-19)	Sustainable, low-cost approach to feeding in pond aquaculture. By optimizing the carbon-to-nitrogen ratio, the mineralization of waste is accelerated and produce natural food for shrimps. Farmed shrimps thus ingest naturally occurring food alongside feed. Research on semi-intensive white leg shrimp systems has shown that more than 85% of N can be retained by optimizing	Farmers managing semi-intensive (50-80 PL/m ²) pacific white shrimp (<i>P. vannamei</i>) farms are monitoring the pond C:N ratio and reduce feed load	Several on-station and on-farm experiments (Hoa De cooperative; My Xuyen district, Soc trang province)		- The National Action Plan to develop Vietnam's shrimp industry Decision 2020-25 (79/QD-TTg) aims at a 36% increase in white leg shrimp (<i>P. Vannamei</i>) farming area and a 46% increase in harvest output A multi-stakeholder innovation platform (IP)
Livestock-based interventions for system transformation (5)	Livestock-led interventions toward equitable livelihoods and improved environment in the North-West Highlands of Vietnam (Li-chan, Livestock CRP, 2019-2021)	Site-specific intervention strategies related to improved forage varieties, access to seeds/planting materials, feed management practices, knowledge and skills in animal husbandry	Location-based	Chiang Ching and Chiang Luong communes, Mai Son district, Son La province.	Baseline and endline surveys have been collected using RHOMIS. Results TBD	
Salt-tolerant rice varieties (STRVs)	1 - Consortium for Unfavorable Rice Environments (CURE, IFAD, 2010-2018) 2 - Climate Change Affecting Land Use in the Mekong Delta: Adaptation of Rice-based Cropping Systems (CLUES) (2011-2013) -IRRI and Cuu Long Rice Research institute CLRRI	These varieties contain the <i>salto</i> gene. Out of 58 STRVs released since 2000, 21 are IRRI-related. 1- CURE has evaluated varietal performance in multilocational trials and on farmers' fields and introduced promising varieties into the countries' seed multiplication system. FL478 (IR66946-3R-178-1-1) was used as breeding material	Household has grown a STRV derived from a CGIAR-related germplasm on at least one plot. Identification using DNA fingerprinting	Adapted zone is the MRD	1- In an IA carried out in the 7 coastal provinces in MRD, 6 (14%) were identified as salt-tolerant rice varieties by experts (Paik et al., 2019).	Objective of 75% certified seeds used in the MKD by 2030 (Decree 1898/QD-BNN-TT).
Off-field rice straw management practices (3)	1 - Closing Rice Yield Gaps in Asia with Reduced Environmental Footprints (CORIGAP, SDC, 2013-16 and 2017-20) 2 - Scalable straw management options for improved livelihoods, sustainability, and low environmental footprint in rice-based production systems (BMZ, 2016-	Off-field straw management technologies including: i) Rice straw-based composting; ii) Rice-Straw Mushroom (RSM); iii) Rice straw silage for cattle feed i) First demo of rice straw collection in 2013, continued dissemination ii) Value chain documented in the MRD for domestic market and	i) Straw have been used for composting ii) Farmer cultivate the paddy straw mushroom, <i>Volvariella volvacea</i> (incubation period of 14	1/2 - Tien Giang, Can Tho, Dong Thap, Soc Trang provinces	- 50% of rice straw in dry season is now collected (Hung, 2017)	Decree 19/2019/TT-BNNPTNT facilitate the development of straw baler and mushroom production

Stocktaking Results

CGIAR research in Vietnam (2003-2023)



- 40+ interviews with CGIAR scientists and national partners
- Review of project documents, published and grey literature, communications, official statistics, government decrees



78 innovations identified in the stocktake + 30 policy contributions



19 with information suggesting they may be adopted at scale

- Aquaculture and capture fisheries
- Breeding innovations
- Climate change adaptation options
- Digital tools
- Environmental Conservation
- Livestock and human health
- Mechanisation
- Sustainable Intensification practices



Collaboration with the General Statistics Office (GSO)

The Vietnam Household Living Standards Survey (VHLSS) is relevant to measure adoption

- Representative at the province-level
- Collects data on agricultural economic activities in the last 12 months
- Focuses on Vietnamese households' characteristics
- Collected annually, with a panel component – 50% of EAs are revisited the following year
- Collected on CAPI since 2021

Data integrations in the VHLSS 2022, 2023 and 2024



Photo: CGIAR in South East Asia

Core domain (section)	Innovation
Aquaculture and Capture Fisheries (Section Five)	Genetically Improved Farmed Tilapia (GIFT)-derived strains
Breeding Innovations (Section Six)	CGIAR-related Cassava varieties
	Cassava Mosaic Disease (CMD)-resistant Cassava Varieties
	CGIAR-related Rice Varieties
	Salt-tolerant Rice Varieties (STRVs)
	Submergence-tolerant Rice Varieties
Climate Change Adaptation Options (Section Seven)	CGIAR-related Potato varieties *
	Agro-Climatic Bulletins (ACBs) *
Environmental Conservation (Section Eight)	Climate-Smart Mapping and Adaptation Planning (CS-MAP)
	Payments for Forest Environmental Services (PFES)
Mechanization (Section Nine)	Laser Land Leveling (LLL)
	Combine Harvester (CBH)
	Mini-Combine Harvester (MCBH)
	Rice Straw Baler (RSB)
Sustainable Intensification Practices (Section Ten)	'Three Reductions, Three Gains' (3R3G) and 'One Must Do, Five Reductions' (1M5R)
	Alternate Wetting and Drying (AWD)
	Drum Seeder
	Off-field Straw Management Practices
	Sustainable Water Use for Coffee Production

Note: * Results on CGIAR-related potatoes are not presented in this report due to limited sample size (n=32). Additionally, results for ACBs are preliminary, and no adoption estimates are provided.

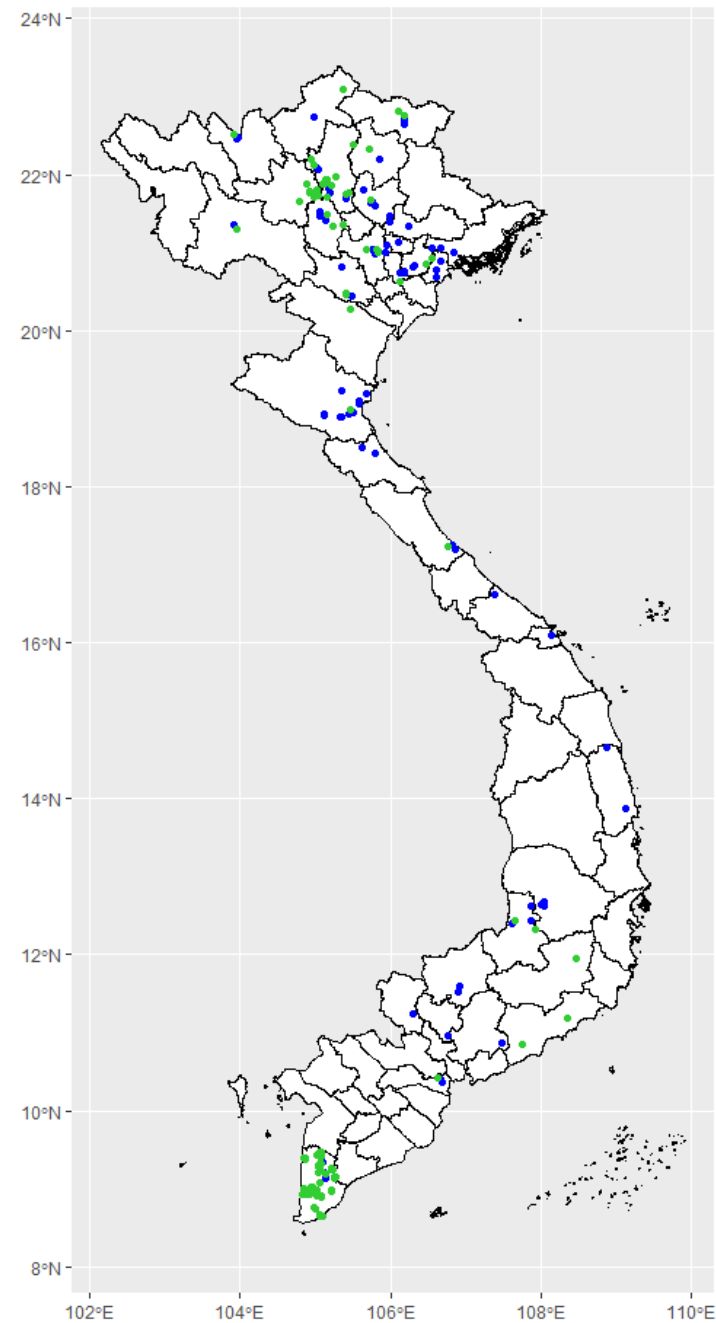
Aquaculture and Capture Fisheries

- A total of 8 innovations were identified
- Indications that the Genetically Improved Farm Tilapia (GIFT) may be at scale
 - GIFT is a faster-growing strain of Nile tilapia (*Oreochromis niloticus*)
 - Disseminated globally in at least 14 countries, including Viet Nam (1994–2006)
- In 2018, the country was as the 7th largest tilapia producing country in the world, with 260,000 tons produced (FAO, 2020).

Data collection occurred in two steps:

- In the VHLSS 2023, using a visual aid to identify tilapia-growing households in 2023 (n=254)
- Follow-up survey on n=204 households and n=87 hatcheries

Location of sampled households (n=204) and hatcheries (n=87)



Sampled Locations

- Hatcheries
- Households

GIFT-derived strains adoption

Tab 1. Characteristics of tilapia farming households in Vietnam (n=204)

	Obs	Mean	s.d	Conditions applied
Production scale				
Size of land under aquaculture (in ha)	148	1.33	1.41	-
Number of ponds	204	1.14	0.47	-
Experience of tilapia farming (in years)	181	14.8	8.1	-
Diversification				
Tilapia monoculture production (in %)	204	6.9		-
Monosex tilapia production (in %)	62	48.3		HH purchased fingerlings in the last 3 years
Household consumes tilapia (in %)	204	74.5		-
Household sells tilapia (in %)	204	34.8		-

- Only 1/3 of households purchased fingerlings in last 3 years
- Vietnamese households practice small-scale tilapia farming on low-intensity systems

GIFT-derived strains adoption

Tab 2. Percentage assignment of hatcheries and households tilapia samples to modal core populations, according to DAPC-assignment to Hamilton et al. (2020) core populations completed by Vietnamese core populations (RIA1 lineage and GenoMar GAIN).

Strain	Group	Country	Breeder/maintainer	Species	Hatcheries		Households	
					All	Purchased fingerlings	All	
GIFT-WF	GIFT	Malaysia	WorldFish	<i>O. niloticus</i>	-	-	-	
GIFTFF	GIFT	Philippines	BFAR NFFTC ^a	<i>O. niloticus</i>	-	-	-	
BEST	GIFT-derived	Philippines	BFAR NFFTC ^a	<i>Hybrid</i>	1.1	3.8	2.0	
GET-ExCEL	GIFT-derived	Philippines	BFAR NFFTC ^a	<i>O. niloticus</i>	-	-	-	
Molobicus	GIFT-derived	Philippines	BFAR NIFTDC ^b	<i>Hybrid</i>	1.1	1.9	0.5	
Nile × Moss	GIFT-derived	Philippines	BFAR NIFTDC ^b	<i>Hybrid</i>	-	-	-	
Abbassa	GIFT-derived	Egypt	WorldFish	<i>O. niloticus</i>	-	-	-	
RIA1 lineage	GIFT-derived	Viet Nam	RIA1	<i>O. niloticus</i>	94.3	71.2	25.0	
GenoMar GAIN	GIFT-derived	Viet Nam	GenoMar	<i>O. niloticus</i>	2.3	-	-	
Chitralada	Non-GIFT	Thailand	AIT ^c	<i>O. niloticus</i>	-	-	-	
FaST	Non-GIFT	Philippines	FAC CLSU ^d	<i>O. niloticus</i>	-	-	-	
<i>O. mossambicus</i>	Non-GIFT	Philippines	BFAR NIFTDC ^b	<i>O. mossambicus</i>	-	23.1	71.1	
Unassigned					1.1	-	1.5	
Obs.					87	52	204	

Note: RIA1 lineage includes a group of closely related strains (GIFT 13th, Philippines, ProGIFT China, Taiwan, NOVIT4 12th, Phu Nem) that have a shared provenance and formed a distinct genetic cluster. GenoMar GAIN samples were obtained from a hatchery supplied by GenoMar at reception. AIT = Asian Institute of Technology; BFAR NIFTDC = National Integrated Fisheries Technology Development Center; BFAR NFFTC = Bureau of Fisheries and Aquatic Resources, National Freshwater Fisheries Technology Center; FAC CLSU = Freshwater Aquaculture Center, Central Luzon State University; RIA1 = Research Institute for Aquaculture No 1.

Breeding Innovations

A total of 17 innovations were found. Including rice, cassava, maize, potato, sweetpotato, groundnut, banana, and forage. Three innovations were included in the VHLSS:

Rice

- Vietnam was the 5th producer in the world and the 3rd exporter in 2023
- Ninety percent of Vietnam's rice exports originate from the MRD.

Cassava

- Production increased from 1.9 m tonnes in 2000 to 11 m tonnes in 2015
- Increasingly became a cash crop for industrial processing of starch

Potato and sweetpotatoes

- Several improved varieties released in Viet Nam were bred with CIP germplasms

CGIAR-Related Cassava Varieties



Variety	Number of samples	% samples	Age (years)	CGIAR-related	Dry matter content QTL (in %)	CMD-resistant QTL (in %)
Improved						
KM94	179	27.5	28	Yes	97	1
KM98-5	114	15.3	18	Yes	39	37
KM57	66	7.7		No	100	100
KM140	56	7.4	13	Yes	98	0
KM419	14	2.1	7	No	93	0
KM297	7	1.3	21	Yes	0	0
KM7	5	1.1	7	Yes	100	0
HL-S11	4	0.9	8	Yes	100	0
KM98-1	4	0.4	18	Yes	100	0
SC9	3	0.1		No	0	0
KM60	2	0.7	28	Yes	0	0
HN2	1	0.4		No	100	100
KM95	1	0.1	28	Yes	100	100
Pirun2	1	0.1		No	100	100
RI/TAII	1	0.3		No	0	0
VNM1	1	0.6		No	0	0
Landraces						
Cao San	78	10.4		No	74	19
Địa phương	65	7.6		No	55	15
Sắn tre	35	3.0		No	94	43
Ba Trắng	7	0.8		No	86	100
Other landraces	102	11.9		No	90	87

Overview of rice varietal adoption in Viet Nam, 2022

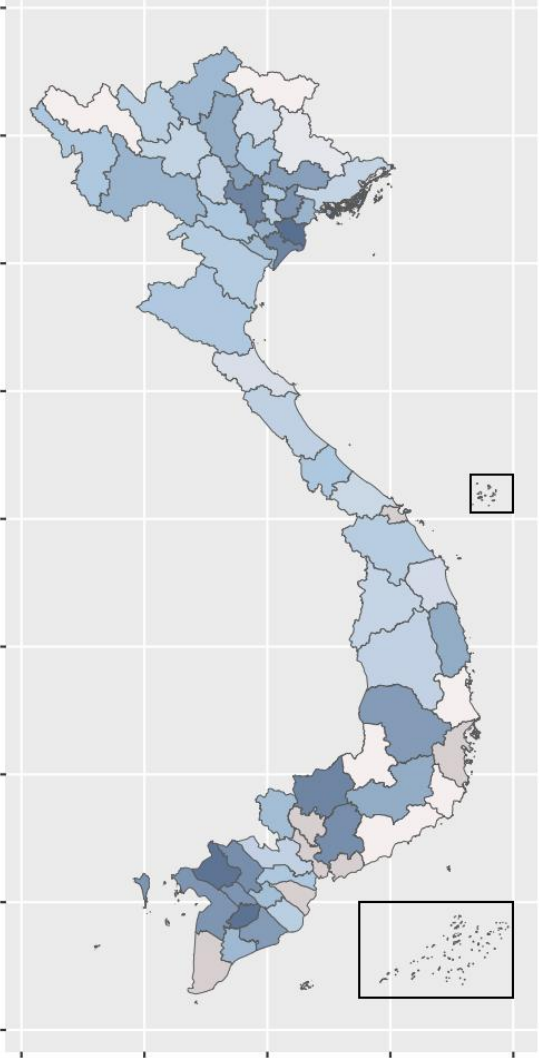
Variety	Number of rice samples	% rice samples	Age (years)	Pedigree	Origin
Unidentified	376	47.1	NA	NA	NA
OM4900	59	7.0	13	IRRI-related (P)	CLRRI and Vinaseed Co.
Dai Thom 8	48	5.9	15	IRRI-related (P2)	Vinaseed Co.
BT7	36	7.7	25	Chinese purebred variety	Thai Binh Seed Co.
KD18	33	3.6	23	Chinese purebred variety	Quang Ninh Seed Co. / Vinaseed Co. / Thai Binh Seed Co.
TBR225	30	5.3	7	Parents pedigree unknown	Thai Binh Seed Co.
Thien Uu 8	30	3.7	7	Parents pedigree unknown	Vinaseed Co.
OM5451	25	3.4	11	IRRI-related (P)	CLRRI and Vinaseed Co.
Thai Xuyen 111	17	2.1	12	Parents pedigree unknown	Thai Binh Seed Co. and SAUC
BC15	16	2.0	14	IRRI-related (P)	Thai Binh Seed Co.
IR50404	14	1.6	30	IRRI-related line	IRRI
N98	13	2.0	9	IRRI-related (P)	FCRI
VNR20	11	1.1	2	IRRI-related (P2)	Vinaseed Co.
Huong thom 1	9	1.0	18	Chinese purebred variety	Thai Binh Seed Co.
HUONG UU 98	9	0.9	6	Chinese purebred variety	Vinaseed Co.
J02	7	1.0	3	Japanese purebred variety	AGI
IR17494	5	0.5	34	IRRI-related line	IRRI
N97	5	0.9	18	Parents pedigree unknown	Thai Binh Seed Co. and ASI
ST24	5	0.3	3	Parents pedigree unknown	Ho Quang Tri Co.
Q5	4	0.8	0	Chinese purebred variety	Thai Binh Seed Co.
Jasmine 85	2	0.4	18	Imported from IRRI Genebank	IRRI
LH12	2	0.4	5	IRRI-related line	VAAS
LTH31	2	0.1	3	Parent likely imported from IRRI Genebank	FCRI
RVT	2	0.4	6	Not IRRI-related	Vinaseed Co.
VNR10	2	0.3	2	IRRI-related (P2)	Vinaseed Co.
OM576	1	0.1	32	IRRI-related (P)	CLRRI
OM6162	1	0.1	12	IRRI-related (P2)	CLRRI
OM7347	1	0.1	11	Parent likely imported from IRRI Genebank	CLRRI
SH14	1	0.1	14	IRRI-related (P)	FCRI

Note: Varieties pedigree are from official decisions from the MARD. IRRI-related (P) = At least one of the original parent plants used in the breeding process is IRRI-related; IRRI-related (P2) = Parents of the parent's plant contain at least one IRRI-related material, used as Parental Generation 2 (P2).



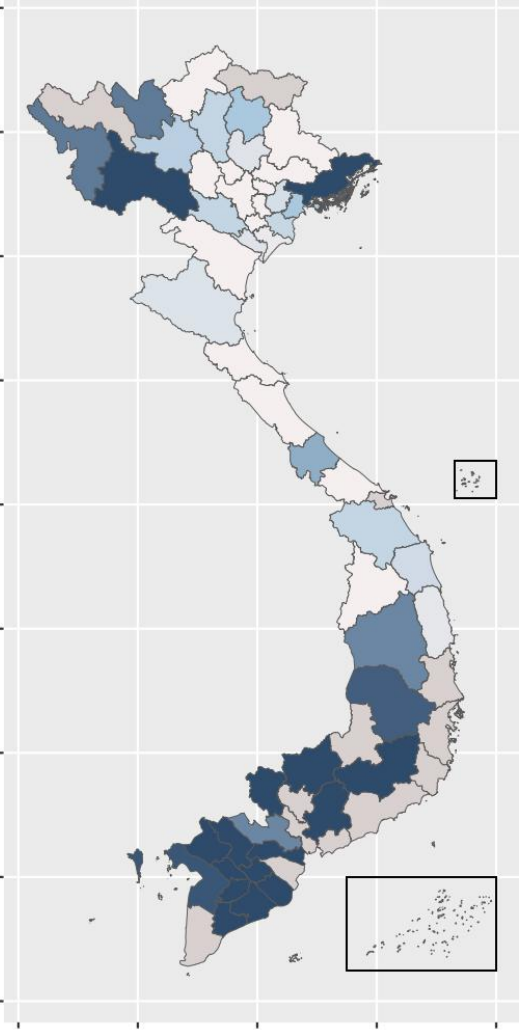
Rice varietal identification: spatial analysis

Improved



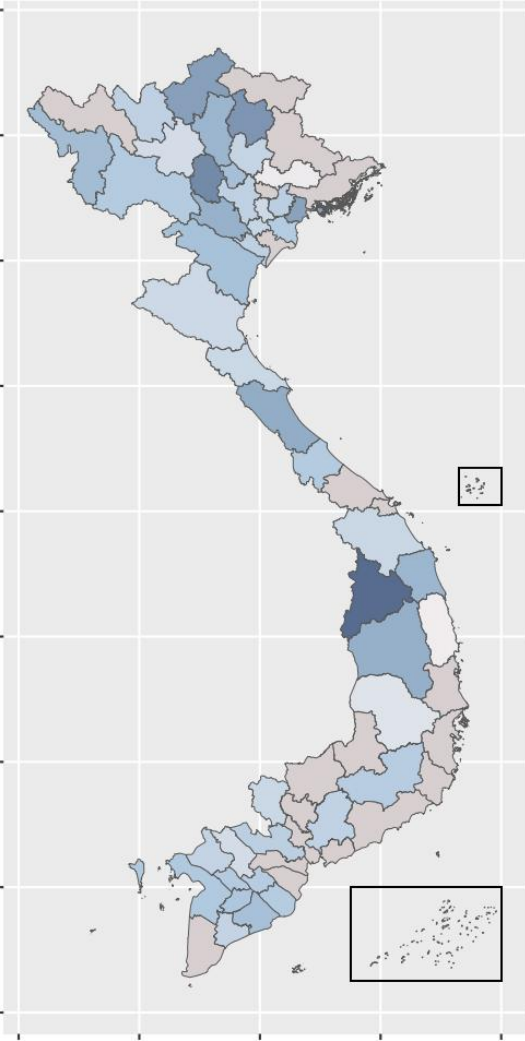
In %
100
75
50
25
0

IRRI-related



In %
100
75
50
25
0

Mean Age of Improved Cultivars

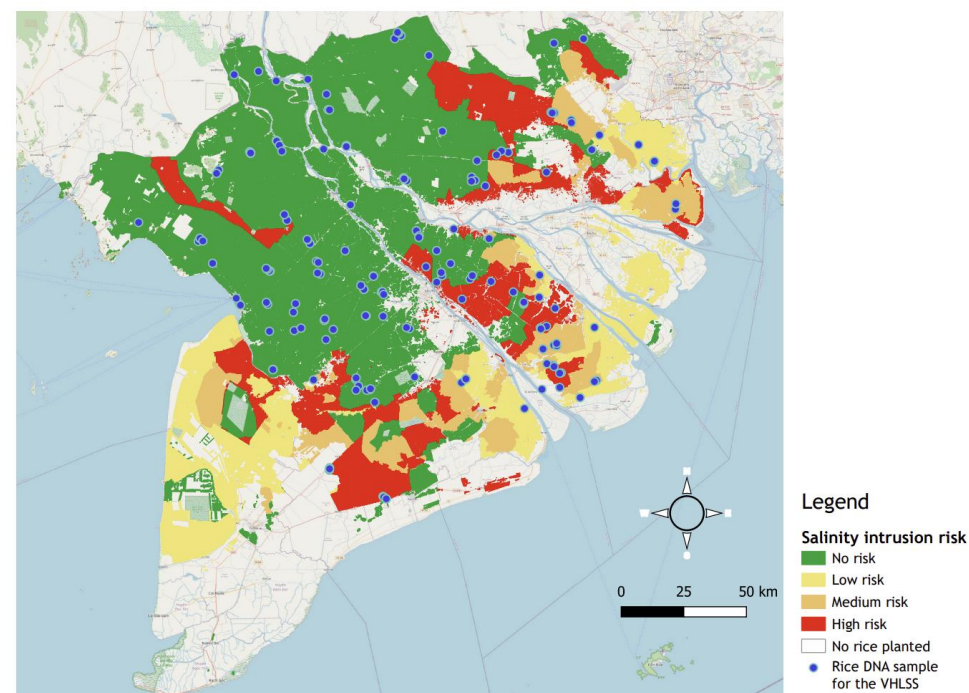


In Years
20
15
10
5
0

Salt-tolerance Rice Varieties (Saltol gene)

- The Saltol gene confers salinity tolerance at the seedling stage
- Approximately 15% of Viet Nam's rice area is at risk of salinity intrusion
- 34% of household grew a variety with the Saltol gene
- Present in 72% of improved rice seeds, and 28% of unidentified (likely landraces)

Fig 1. Map of the Mekong River Delta displaying salinity risk levels and rice-growing households surveyed in VHLSS 2022.



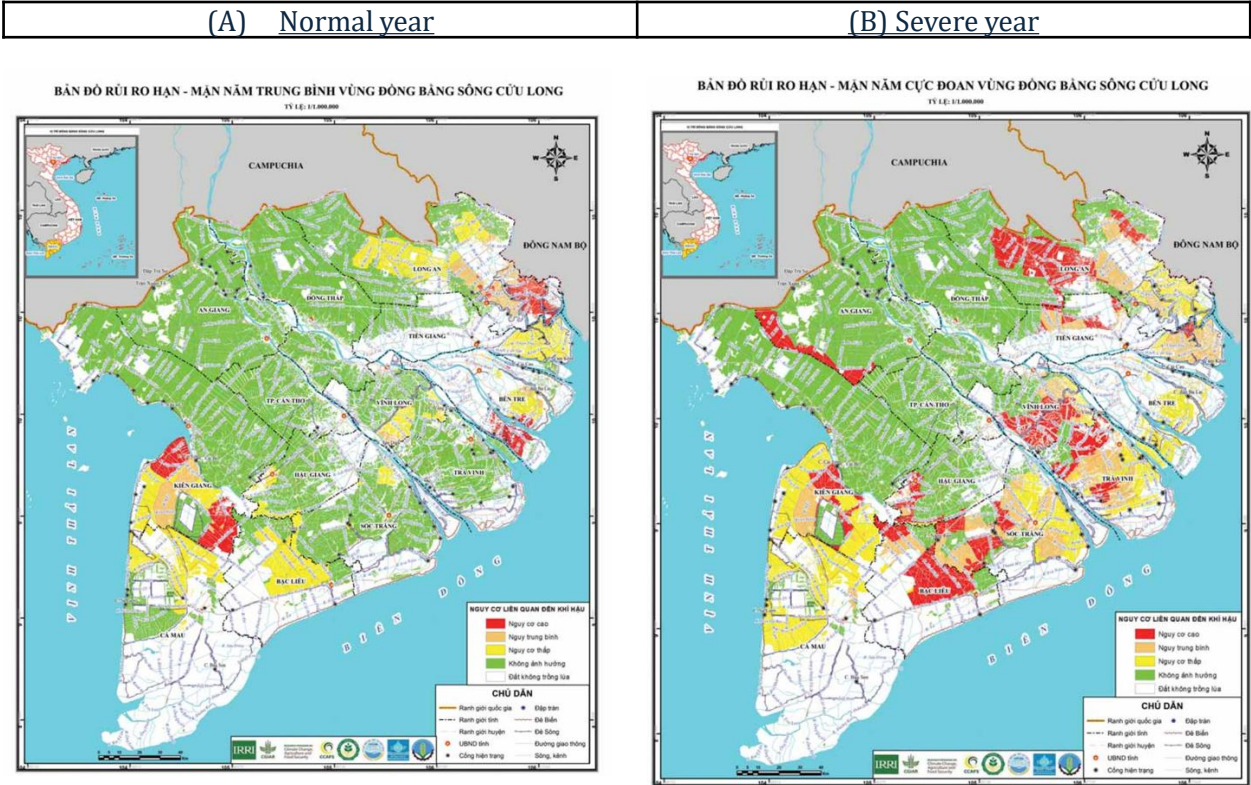
→ Households living in high salinity risk are more likely to grow a variety with the saltol gene ($p = .1$)

Livestock and Human Health

- A total of eight innovations and two policy contributions were found
- These innovations target public health authorities, breeders, were not implemented on a large scale, or were still at the research stage.
- Policy contributions on Livestock and Human Health:
 - Subsidies for improvements in farmer household animal husbandry in 2015 – 2020 period (2014)
 - Viet Nam Government Embraces a Risk-based Approach to Food Safety management (2017)
- Policy contributions on Nutrition and Health:
 - Contributions to the Zero Hunger National Action Program (NAP, 2018-25) framework and monitoring
 - Agriculture, Nutrition and Health (ANH) Academy

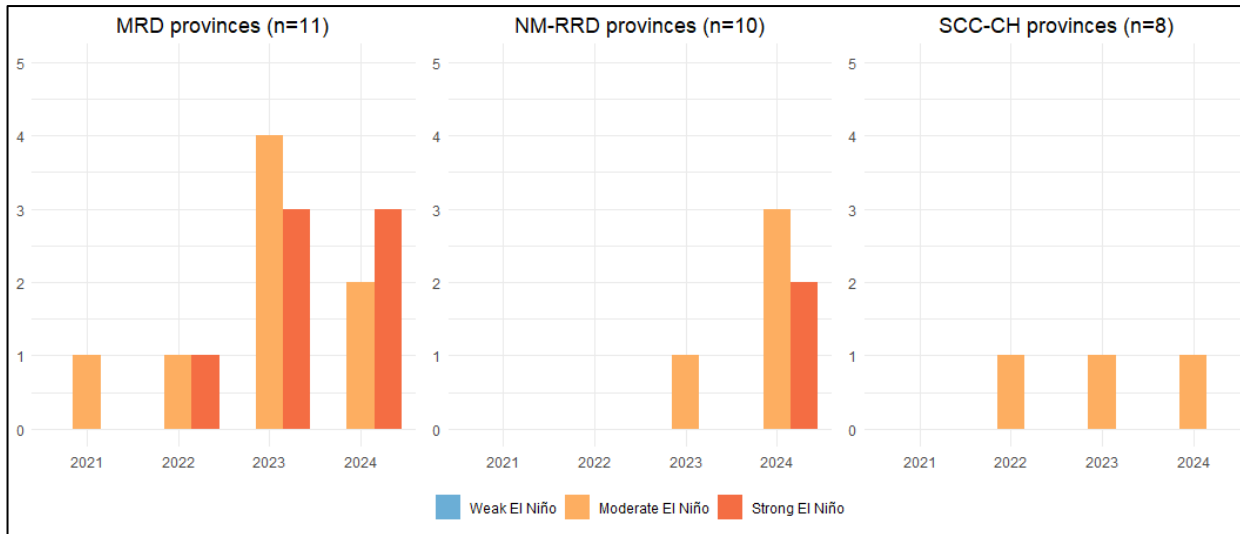
Climate Change Adaptation Options

- A total of 4 innovations were found
- Agro-Climatic Bulletins (ACB)
- Climate-Smart Mapping and Adaptation Planning (CS-MAP)



Climate-Smart Mapping and Adaptation Planning (CS-MAP)

- Search for mentions of “El-Nino” in agricultural planning (n=217 plans from 2021 to 2024)



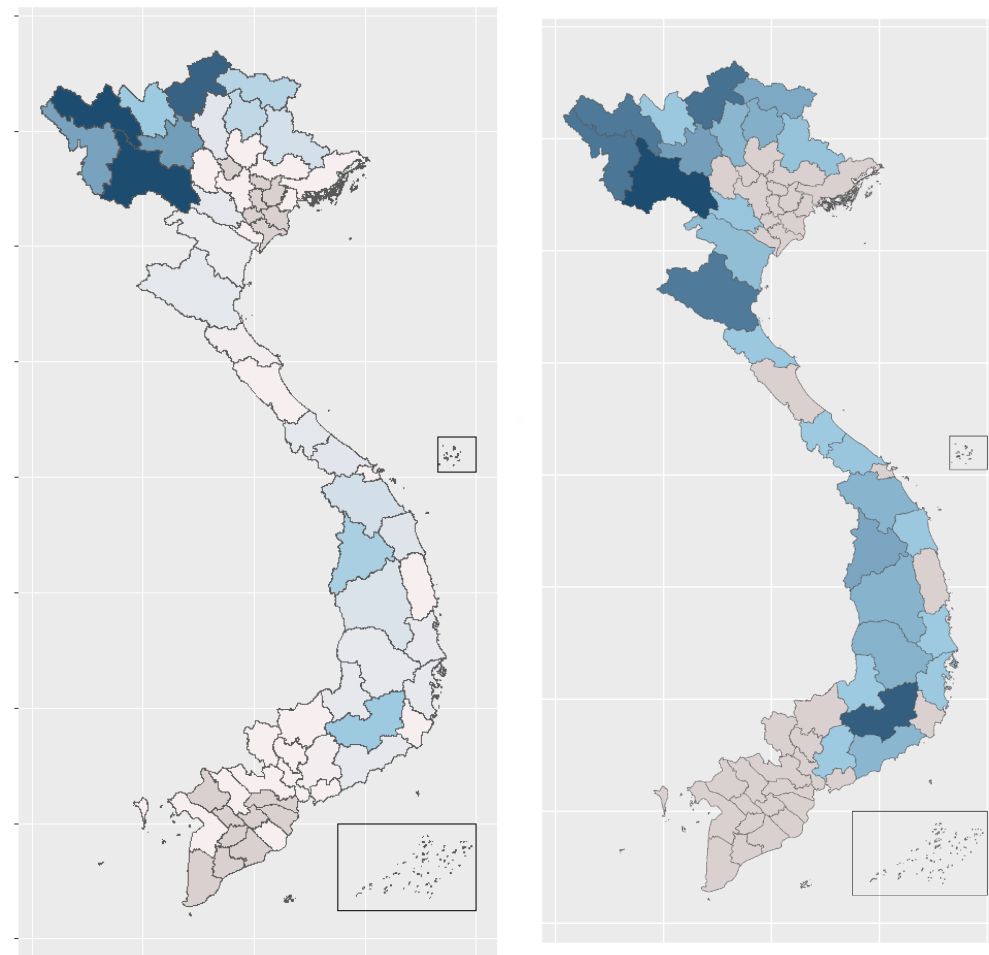
-> Regional differences in climate resilience planning

- The VHLSS dataset was merged at the district level with the georeferenced CS-MAPs from MRD
 - 3,264 household-level observations from two years (2022 and 2023), in 13 MRD provinces.
 - An OLS model was run to test the association

Payment for Forest Environmental Services (PFES)

- Payments for Forest Environmental Services (PFES) is a payment mechanism that provides incentives for the sustainable management of natural resources, introduced in 2008.
- The reach of PFES was measured at the commune level in the VHLSS 2024
- 12% of commune surveyed were participating in the PFES at the end of 2023.
- The share of participating communes was the highest in the Northern provinces

Fig 3. Percentage of communes per province with (a) operational Payments for Forest Environmental Services areas and (b) total forest area under PFES in 2023



Mechanization

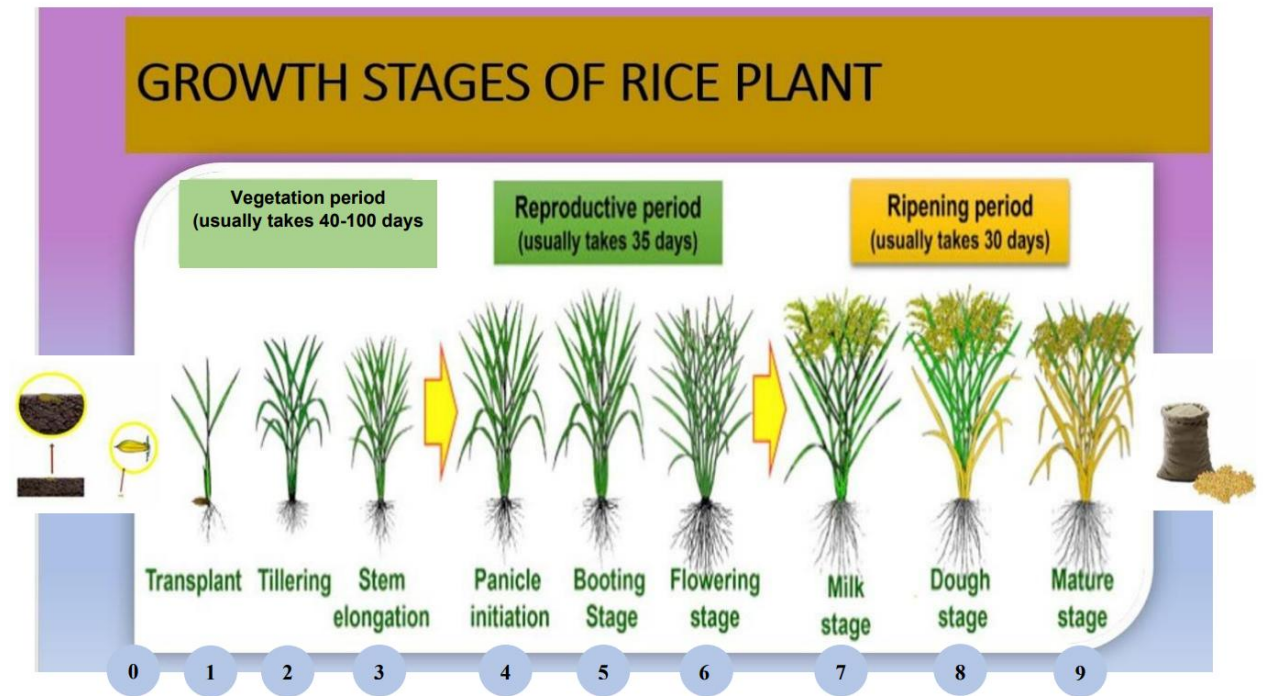
- A total of 8 innovations were found
- Data was collected using survey modules and visual-aids

Innovation	2022			2023		
	%EA	%HH	Estimated number of hh	%EA	%HH	Estimated number of hh
Laser Land Levelling (LLL)	/	/	/	13.9	5.4	409,359
Combine Harvester (CHB)	75.8	65.4	5,091,704	81.7	74	5,621,020
Mini-Combine Harvester (MCHB)	26.9	10.3	800,280	/	/	/
Rice Straw Baler	8.3	2.7	207,567	12.8	4	303,644

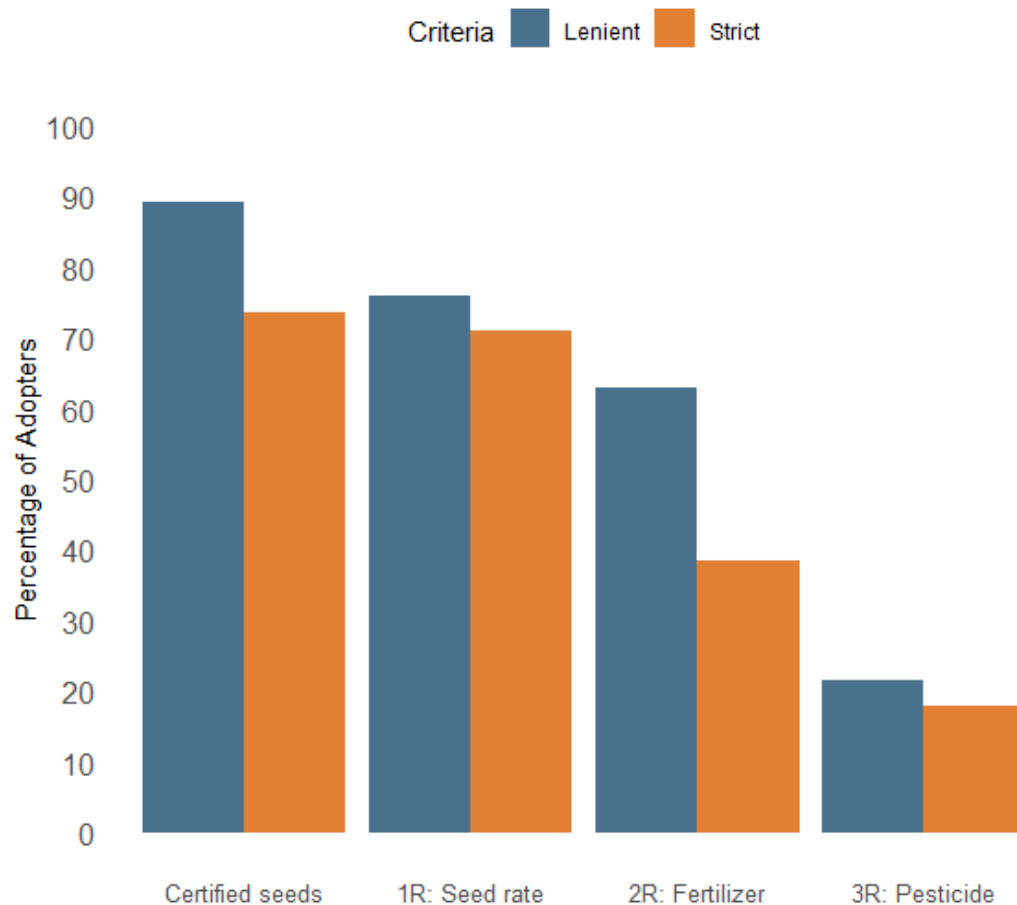
Sustainable Intensification Practices

- A total of 21 innovations were found
- Information suggesting 1M5R, Alternate Wetting and Drying, Drum seeder, Off-field straw management practices and Sustainable Water Use for Coffee Production may be at scale

Fig 4. Visual-aid to collect the timing of agronomic practices (pesticide application and water irrigation)



3 Reductions 3 Gains (3R3G) and 1 Must do, 5 Reductions (1M5R)



- Pesticide application in the 40 days after sowing is a limiting factor for adoption
- Overall, 10.6% or 787,000 households adopting the 3 reduction principles

Note: Certified seed data based on farmer's elicitation. Results are thus different from the DNA-based varietal identification

Alternate Wetting and Drying (AWD), by measurement method

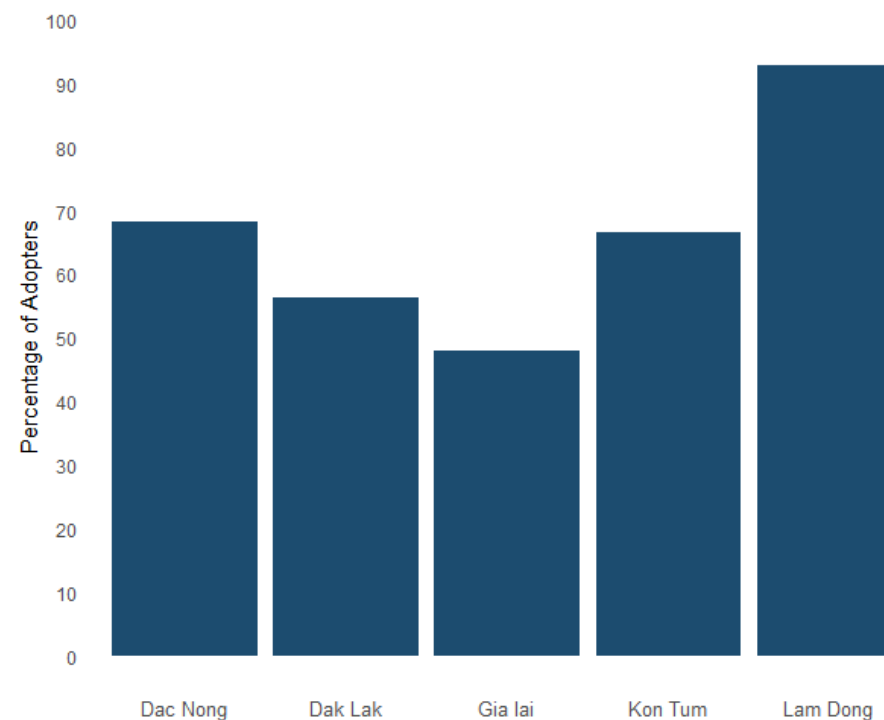
	VHLSS 2022		VHLSS 2023	
	EAs	Households	EAs	Households
Measurement A				
Self-reported data by name	13.7	5.4	24.7	10.7
Measurement B – Survey questions				
Self-reported data – 1 drydown of 5 days minimum	32.1	12.9	NA	NA
Self-reported data – At least 2 drydowns of 5 days minimum	57.2	30.7	NA	NA
Measurement C – Improved module with visual aid				
Self-reported data – 1 drydown of 5 days minimum	NA	NA	12.6	5.4
Self-reported data – At least 2 drydowns of 5 days minimum	NA	NA	10.5	3.3

Note: Measurements B and C relate to the rice growth period between transplanting and flowering.
NA = Not Available. Data source: VHLSS 2022 and 2023.

Sustainable Water Use for Coffee Production

- Water quantity of 400 L per plant/irrigation round is sufficient to sustain coffee yields
- Recommendation developed by the Hanns Neumann Stiftung, IWMI and Nestle, based on coffee water footprint calculations.
- Disseminated by extension services in the Central Highlands
- We found 63% of household declared respecting this threshold, equivalent to 491,000 households

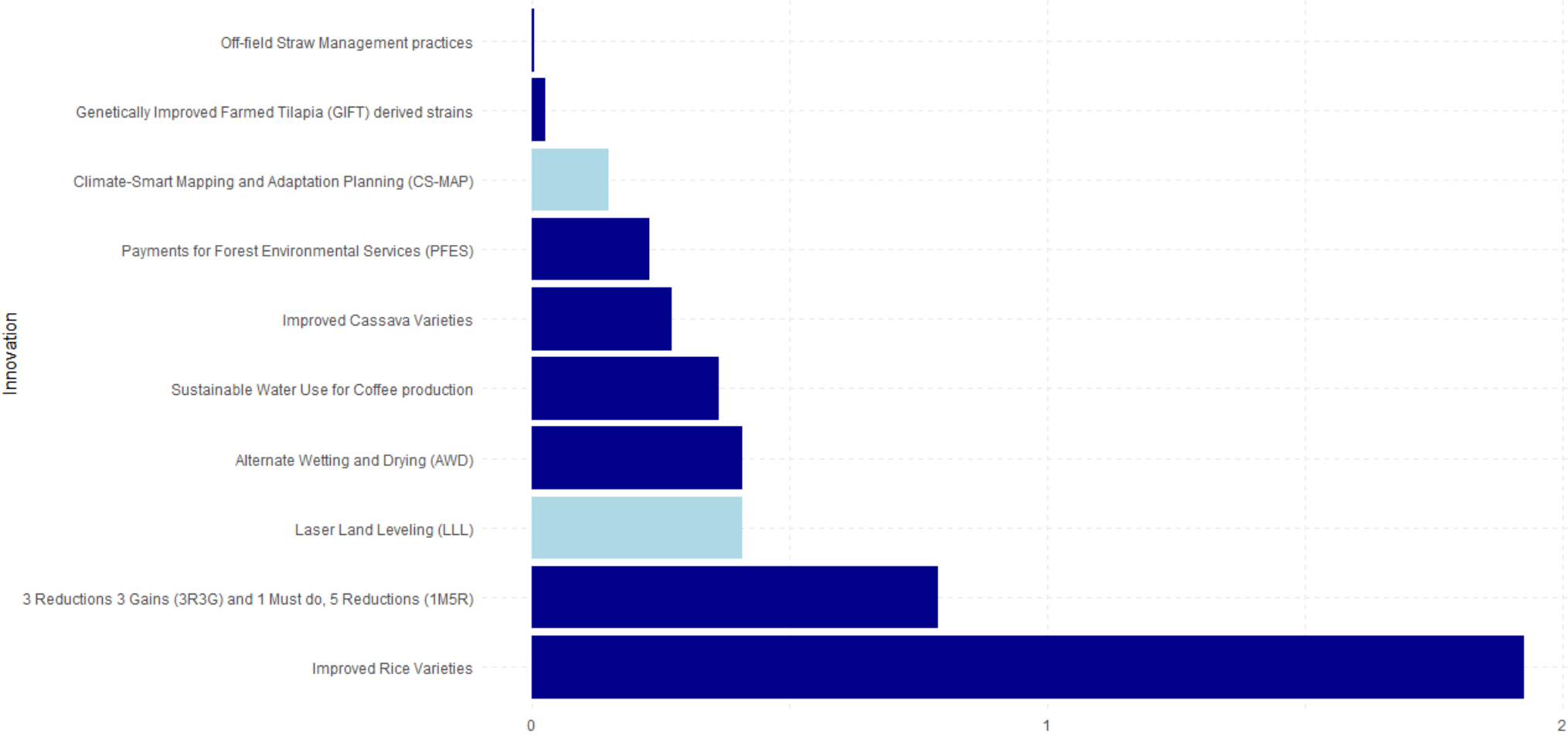
Fig 5. Adoption of water-saving practices for coffee production in the Central Highlands provinces



Socioeconomic characteristics of adopters

Innovation	Age of HH head (std)	Annual income (std)	HH head from an ethnic minority	Highest completed grade (std)	HH head is female	Household has internet	Household size (std)	Main road is asphalt	Total agricultural land (in ha)
Aquaculture and capture fisheries									
GIFT-derived Tilapia Strains	0.01	0.03	0.53 ***	0.12 **	-0.06	-0.01	-0.01	NA	0.00
Breeding innovations									
CGIAR-related Cassava Varieties	-0.06 *	-0.08	-0.06	-0.04	-0.18 **	0.15 **	0.04	NA	0.00
Cassava Mosaic Disease (CMD)-resistant Cassava Varieties	0.11 **	-0.01	0.07	0.04	0.13 *	-0.06	0.02		-0.01
CGIAR-related Rice Varieties	0.00	0.34	-0.09	-0.05 **	0.05	0.05	-0.02	-0.16 **	0.07 ***
Salt-tolerant Rice Varieties~	0.00	-0.14	-0.06	-0.04	-0.06	0.10 *	0.00	-0.14 **	0.04 **
Climate Change Adaptation Options									
CS-MAP	0.00	0.02	0.01	-0.01	-0.05	0.02	0.05 *	NA	-0.01
Mechanization									
Laser Land Leveling	-0.01 *	0.01 *	-0.04 ***	0.00	-0.01	0.00	0.00	NA	-0.01 **
Combine Harvester	0.03 ***	0.05 ***	-0.54 ***	0.00	0.02	0.02 **	-0.02 **	NA	-0.03 ***
Rice Straw Baler	0.00	0.00	-0.02 *	0.00	-0.01	0.00	0.00	NA	0.00
Sustainable Intensification Practices									
Components of 'One Must-Do, Five Reductions'									
1R: Seed Rate	0.03 ***	0.02 **	0.13 ***	0.08 ***	0.02	0.03 **	-0.02 ***	NA	-0.08 ***
2R: Fertilizer Use	0.01	0.02 **	-0.07 **	0.01	0.02	-0.02	0	NA	0
3R: Pesticide Use	-0.01 **	-0.01	0.1 ***	0.01	0.02	-0.04 **	0.01 **	NA	0
'Three Reductions, Three Gains'	0.00	0	0.04 **	0.01 **	0.01	-0.02	0	NA	-0.01 *
Alternate Wetting and Drying	0.01 **	0.01	0.02 **	0.01 **	-0.01	0.01	-0.01 **	NA	0
Drum Seeder	0	0	-0.03 ***	-0.01 **	0	0	0	NA	0.01 ***
Sustainable Water for Coffee Production									
Production	-0.04	0.09	0.2 **	0.05	0.19 **	-0.13	-0.05	NA	-0.01

Number of households adopting each CGIAR-related innovation in 2023, in millions





SPIA Viet Nam Report: Global Ambitions, Sustainable Pathways

Frederic Kosmowski, Thanh Binh Le, Simon Chavez, Ha Thu Nguyen, Phuong Nguyen, Davis Gimode, Monica Biradavolu, Johanne Pelletier, James Stevenson, Sujata Visaria

January 2025

SPIA Country Study: Vietnam, 2nd Report

- Evidence of adoption of CGIAR-related innovations
- Large adoption in 3 key sectors: rice, cassava and tilapia commercial farms
- Potential contribution to Vietnam's agricultural transformation and integration into global markets
- Questionnaire modules, datasets and scripts are in the public domain:
<https://www.openicpsr.org/openicpsr/project/212901>
- This report lays the groundwork for monitoring adoption and assessing the impact these innovations



Standing
Panel on
Impact
Assessment

Thank you



www.linkedin.com/company/iaes-cgiar/



[@cgiarspia](https://twitter.com/cgiarspia)



www.iaes.cgiar.org/spia



Independent Advisory
and Evaluation Service