

GLOBAL RANGELANDS DATA PLATFORM

A global platform for multiple users including the UN and other development agencies for sourcing, consolidating, and sharing information on rangelands status, change, influencing forces, and restoration opportunities.

2024
1st Edition

Sheep and goats in Afar, Ethiopia being moved to new pastures. (Photo: Wolfgang Bayer).

The global rangelands data platform is being established in response to a gap in rangelands data identified by the UN Environment Assembly through Resolution L17 Innovations in Sustainable Rangelands and Pastoralism 2019 and the complimentary report: A Case of Benign Neglect. Knowledge Gaps About Sustainability in Pastoralism and Rangelands. With funding from the CGIAR Big Data Platform and through a consultative process the outline of the platform was conceptualised. A global rangelands atlas was launched as a first step. It is anticipated that the global rangelands data platform will be launched in 2023. It will bring together big data on rangelands, source data including exploring crowd-sourcing and be an interactive platform for producing reports and trends for multiple users including UN Agencies monitoring rangeland and development agencies and actors developing interventions for rangelands, researchers and academics, and ultimately pastoralists themselves.

INITIATIVES, PARTNERS AND ESTIMATED USD INVESTMENT

LEAD INITIATIVE

INIT34: **Livestock and Climate** - Livestock, Climate and System Resilience **\$30K**

CONTRIBUTING CENTRES

- ILRI – International Livestock Research Institute
- Alliance of Bioversity and CIAT – Headquarter (Bioversity International)
- Alliance of Bioversity and CIAT – Regional Hub (International Center for Tropical Agriculture / Centro Internacional de Agricultura Tropical)
- ICARDA – International Center for Agricultural Research in the Dry Areas
- World Agroforestry Centre

BILATERAL PROJECTS

GEF - Global Environment Facility (United States of America)

PARTNERS INVOLVED

GMV – Innovation partner **\$10K**



THIS INNOVATION IS CHARACTERIZED AS

Radical Innovation

Innovations that are new and replace existing products, systems, services and/or policies but do not cause or require major reconfiguration of farming, market and/or policy/business models.



THE NATURE OF THIS INNOVATION IS

Capacity Development Innovation

Innovations that strengthen capacity, including farmer, extension or investor decision-support services; accelerator/incubator programs; manuals, training programs and curricula; online courses.

IMPACT AREAS

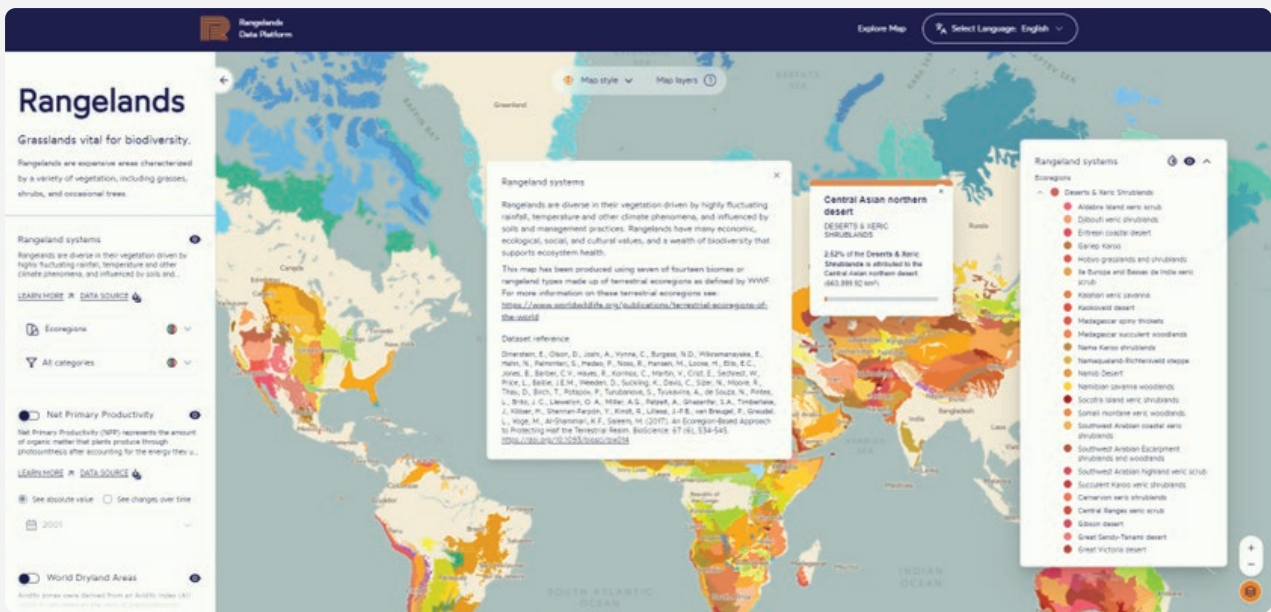
Nutrition tag
0 - Not Targeted

Poverty tag
0 - Not Targeted

Gender tag
0 - Not Targeted

Climate tag
1 - Significant

Environment tag
1 - Significant



General view of the rangelands' ecoregions in the MVP's geospatial platform



Cattle on migration from the spring meadows to the high pastures for the summer period, in Chatel, France, part of the Haute-Savoie area in the French/Swiss Alps. (Photo: Veronique Magnin/ ILC Rangelands Initiative)



Local women collecting herbal/medicinal plants in the Hima, Jordan, to be later processed and packed in the workshop for extra income. (Photo: Mahfouz Abu Zanat/IUCN/ILC Rangelands Initiative)



ANTICIPATED INNOVATION USER(S)

ORGANIZATIONAL CLIENTS



Researchers

♀ Non-youth ♂ Non-youth



Policy actors (public or private)

♀ Non-youth ♂ Non-youth



Farmers / (agro)pastoralist / herders / fishers

♀ Non-youth ♂ Non-youth

OTHER QUANTITATIVE MEASURES OF INNOVATION USE

- # of platforms

RESPONSIBLE INNOVATION

PROMOTE GENDER EQUALITY AND SOCIAL INCLUSIVITY

○ No actions taken yet

LIMIT UNINTENDED CONSEQUENCES

- Engaging diverse innovation use groups in innovation development
- Used tools to anticipate unexpected negative impacts

INNOVATION TEAM DIVERSITY

- Gender diversity
- Diversity in years of experience
- Diversity in expertise
- Disciplinary diversity
- Regional diversity



THIS INNOVATION IS EXPECTED TO CONTRIBUTE TO THE FOLLOWING IMPACTS



CGIAR IMPACT AREAS & COLLECTIVE GLOBAL TARGETS

1 NUTRITION, HEALTH & FOOD SECURITY 1.1	2 POVERTY REDUCTION, LIVELIHOODS & JOBS 2.2	3 GENDER EQUALITY, YOUTH & SOCIAL INCLUSION 3.1
4 CLIMATE ADAPTATION & GREENHOUSE GAS REDUCTION 4.1	5 ENVIRONMENTAL HEALTH & BIODIVERSITY 5.1	

SDGs AND SDG TARGETS

1 NO POVERTY 1.1	2 ZERO HUNGER 2.1	5 GENDER EQUALITY 5.1
8 DECENT WORK AND ECONOMIC GROWTH 8.1	12 RESPONSIBLE CONSUMPTION AND PRODUCTION 12.1	13 CLIMATE ACTION 13.1

DEVELOPED, TESTED AND/OR SCALED GLOBALLY





Delta-level land use planning in Hanraku, Tana Delta, Kenya. (Photo: Dominic Mumbu)



ACKNOWLEDGEMENTS

We would like to thank all Funders who support this innovation through their contributions to the **CGIAR Trust Fund** (www.cgiar.org/funders). Additional bilateral investment for this innovation has been provided by the GEF and IUCN.




MORE INFORMATION

WEBSITES AND DOCUMENTATION

- <https://hdl.handle.net/10568/128013>
- <https://hdl.handle.net/10568/128184>
- <https://hdl.handle.net/10568/116192>
- <https://hdl.handle.net/10568/110321>

CONTACT PERSON

For more information on this innovation please contact **Fiona Flintan** (f.flintan@cgiar.org) 

 © 2024 CGIAR System Organization. Some rights reserved. This work is licensed under a [CC BY-NC 4.0 license](https://creativecommons.org/licenses/by-nc/4.0/).

CITATION

Flintan, F., Getahun, Garcia, C. 2024. *Global rangelands data platform: IPSR Innovation Profile. First edition, September 2024. Montpellier: CGIAR System Organization.* <https://hdl.handle.net/--->



CURRENT INNOVATION READINESS

9

PROVEN INNOVATION

The innovation is validated for its ability to achieve a specific impact under uncontrolled conditions

8

UNCONTROLLED TESTING

The innovation is being tested for its ability to achieve a specific impact under uncontrolled conditions

7

PROTOTYPE

The innovation is validated for its ability to achieve a specific impact under semi-controlled conditions

6

SEMI-CONTROLLED TESTING

The innovation is being tested for its ability to achieve a specific impact under semi-controlled conditions

5

MODEL/EARLY PROTOTYPE

The innovation is validated for its ability to achieve a specific impact under fully-controlled conditions

4

CONTROLLED TESTING

The innovation is being tested for its ability to achieve a specific impact under fully-controlled conditions

3

PROOF OF CONCEPT

The innovation's key concepts have been validated for their ability to achieve a specific impact

2

FORMULATION

The innovation's key concepts are being formulated or designed

1

BASIC RESEARCH

The innovation's basic principles are being researched for their ability to achieve a specific impact

0

IDEA

The innovation is at idea stage

INNOVATION READINESS JUSTIFICATION

The outline/structure of the rangelands data platform has been developed through a consultative process including a survey involving potential users. Funds received from GEF through IUCN to fully develop platform. It is anticipated that it will be launched in 2024.

EVIDENCE

shorturl.at/uw6ql

shorturl.at/agR4V

shorturl.at/2nmxl