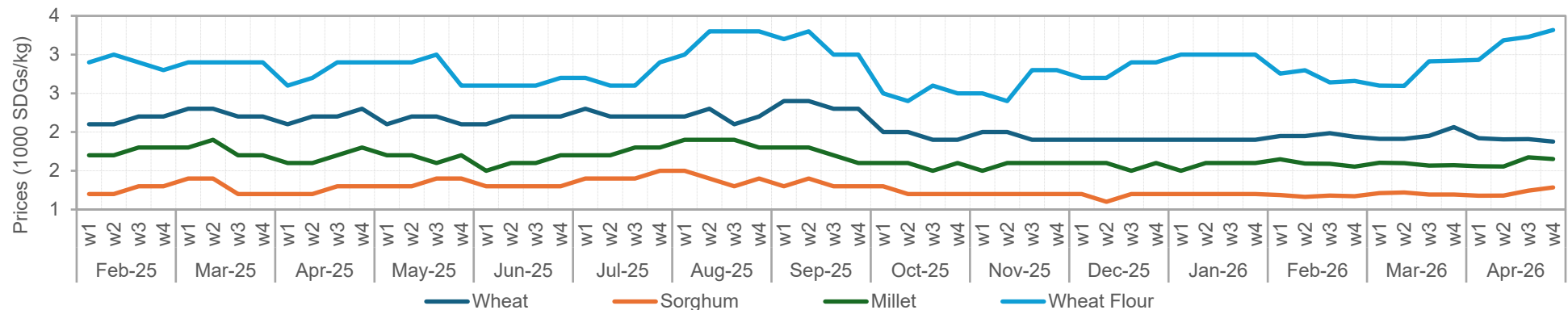


MARKET PRICES AND AVAILABILITY REPORT 15 April 2026

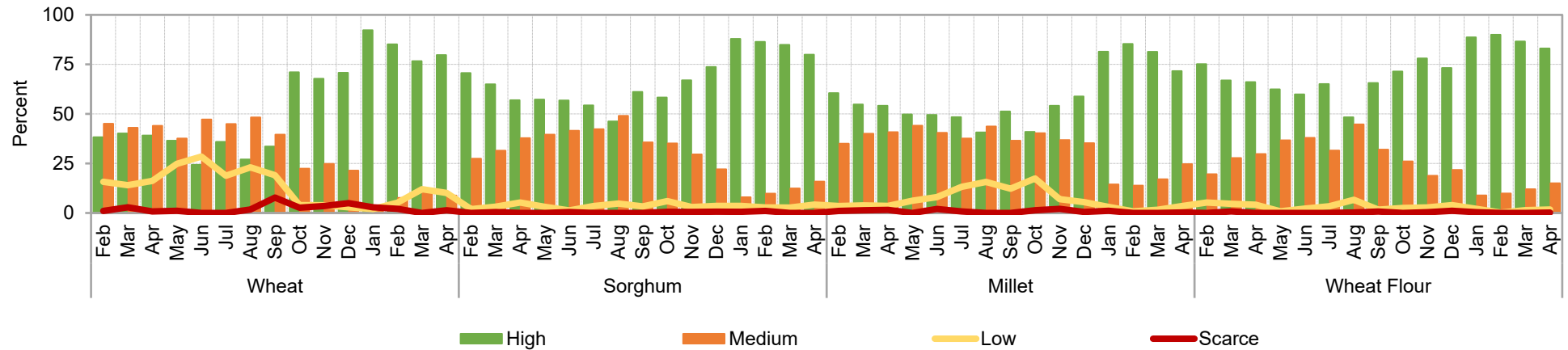
Essential Commodities Prices, Availability, and Market Actors' Perceptions

Cereals and Flour

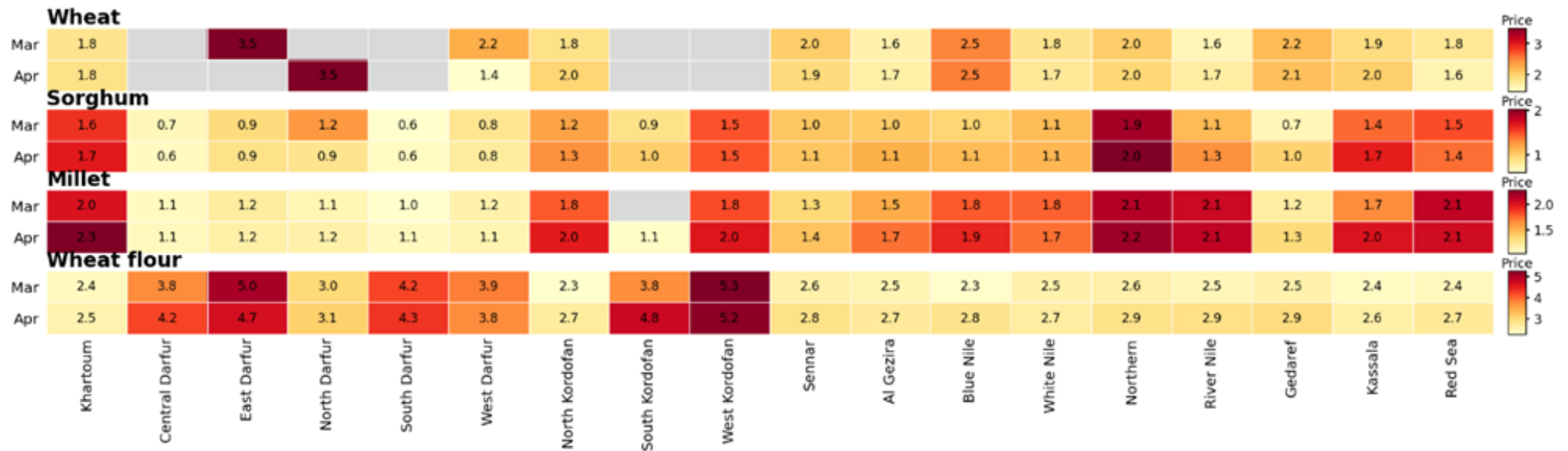
The following figure presents weekly average local prices of cereals and wheat flour (SDG/kg) from February 2025 to April 2026. Sorghum and millet prices remained relatively stable throughout February – April 2026, with slight increases towards the end of April. Wheat prices declined marginally in April compared to the final week of March. In contrast, wheat flour prices recorded a moderate increase over the same period.



The availability scores for cereals and wheat flour from February 2025 to March 2026 are shown in the figure below indicating a slight decline in perceived high availability of sorghum, millet, and wheat flour in April 2026 compared to March and a marginal increase in that of wheat over the same period.

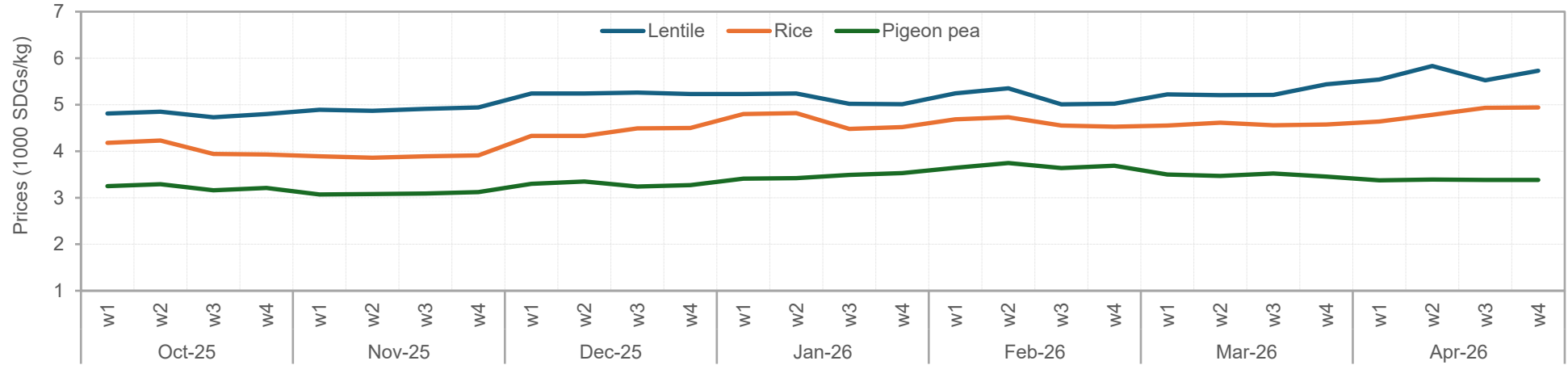


In April 2026, wheat prices were highest in North Darfur and Blue Nile, and lowest in West Darfur. Sorghum prices were highest in Northern state and lowest in Central Darfur. Millet recorded the highest prices in Khartoum. Wheat flour remained relatively stable across states, with the highest prices recorded in West Kordofan state (heatmap).



Lentils, Rice, and Pigeon Peas

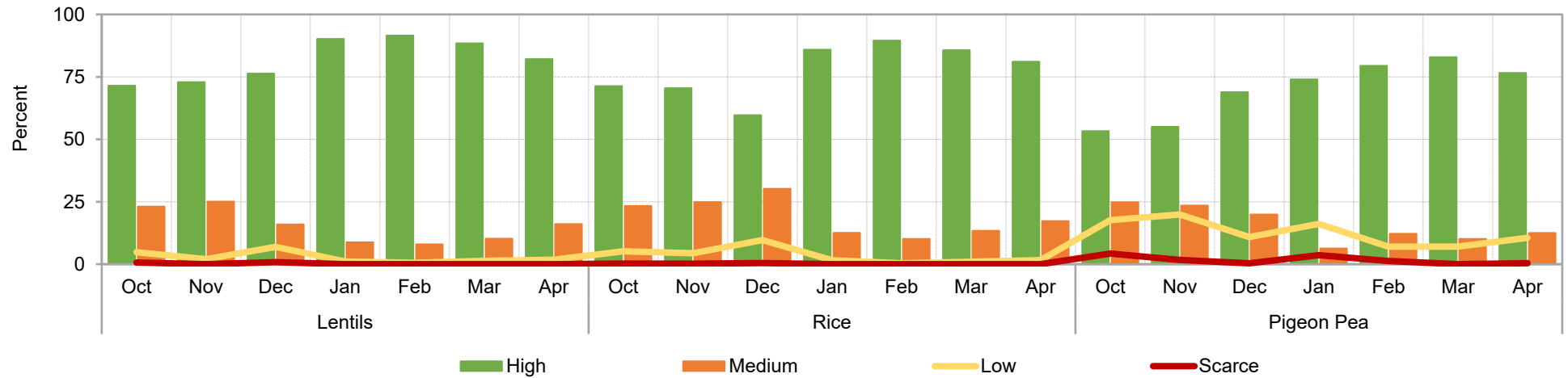
Local prices of lentils, rice, and pigeon peas (weekly averages, 1,000 SDG/kg, October 2025–April 2026), shown the figure below, remained stable during April 2026 with lentil prices increasing toward the end of the month.



The heatmap below of monthly average prices of lentils, rice, and pigeon peas across states (1,000 SDG/kg) for March–April 2026, indicates similar to February–March 2026 round, that Darfur and West and South Kordofan states, recorded the highest prices for the commodities in Sudan.

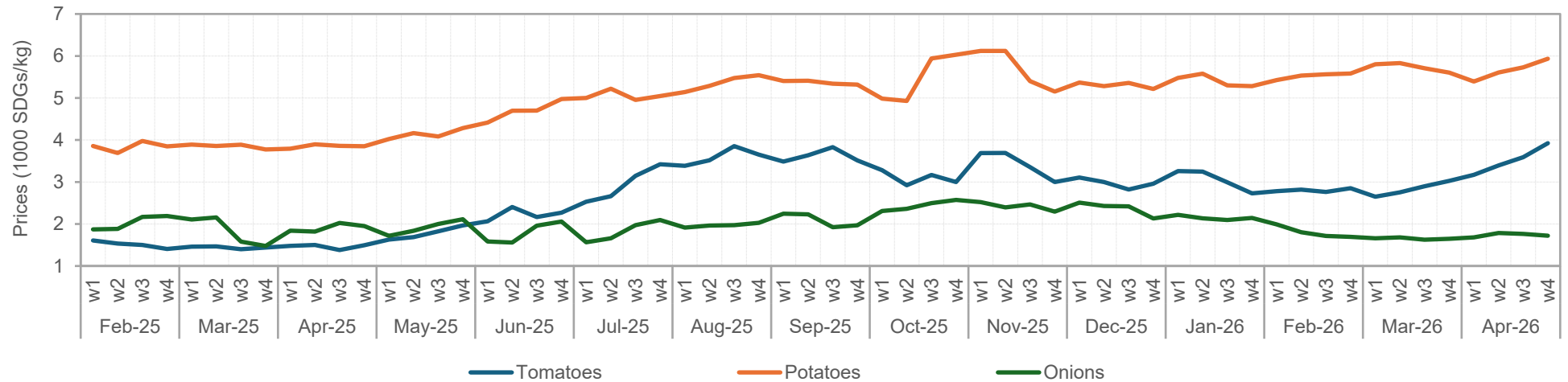


The availability scores for lentils, rice, and pigeon peas (October 2025–April 2026), shows that in March 2026 the share of traders reporting “high” availability declined for the three commodities.



Vegetables

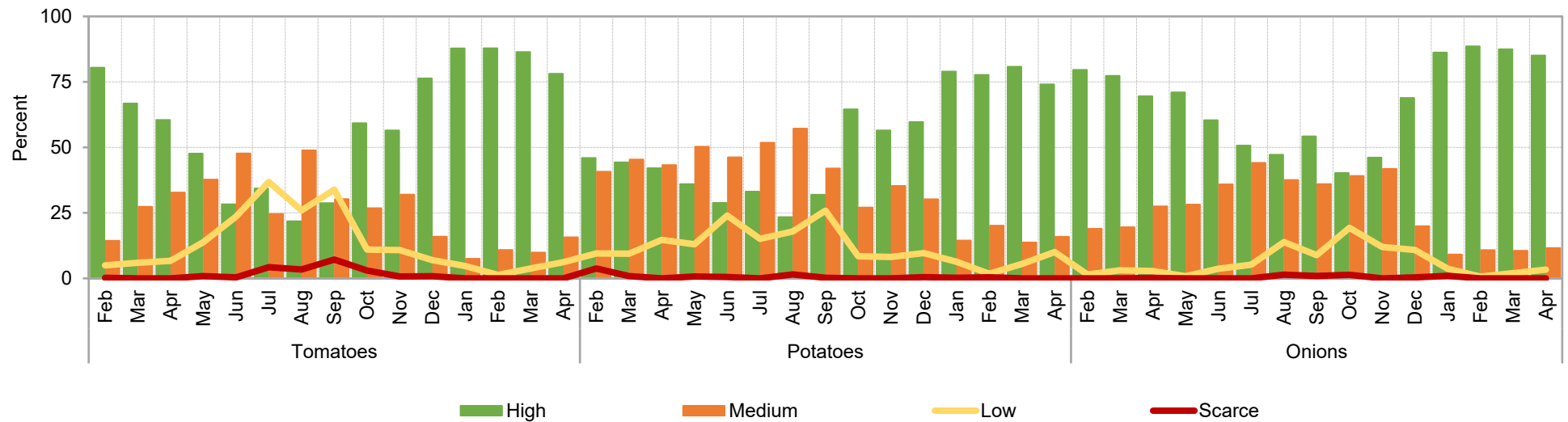
Potato and tomato prices (weekly averages, SDG/kg, February 2025 – April 2026) increased slightly in April 2026 compared with February and March, while onion prices declined slightly in February and remained relatively stable throughout March and April.



The heatmap of monthly average prices of vegetables across states (1,000 SDG/kg, March - April 2026), shows that the highest tomatoes and potatoes prices in April were recorded in West Kordofan and for onions in south Kordofan states. The lowest prices for tomatoes and potatoes were in Khartoum and those of onions were in Kassala and Blue Nile states. With the exception of south Kordofan, onion prices remain relatively low and stable across states.

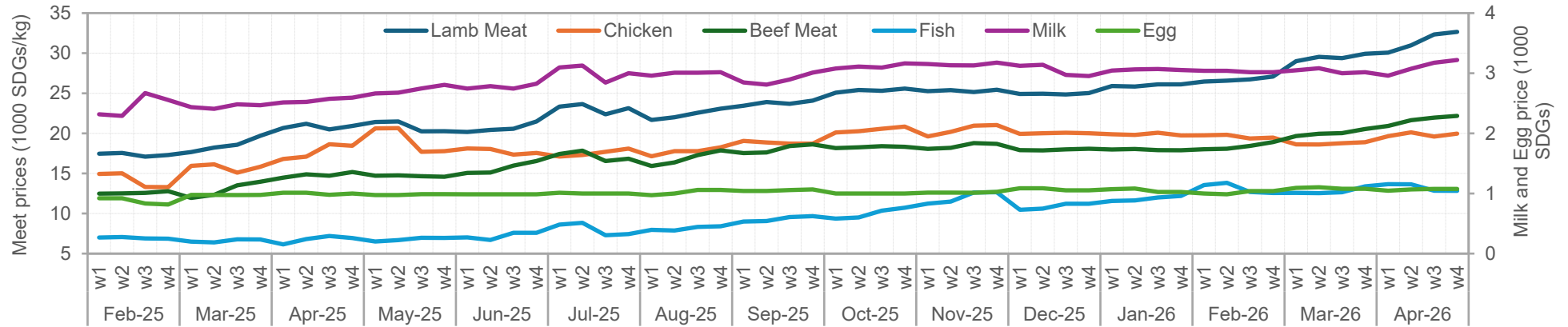


Availability scores (February 2025–April 2026), indicates a slight decline in the share of traders reporting high availability of tomatoes, potatoes and onions.



Meat and Animal Products

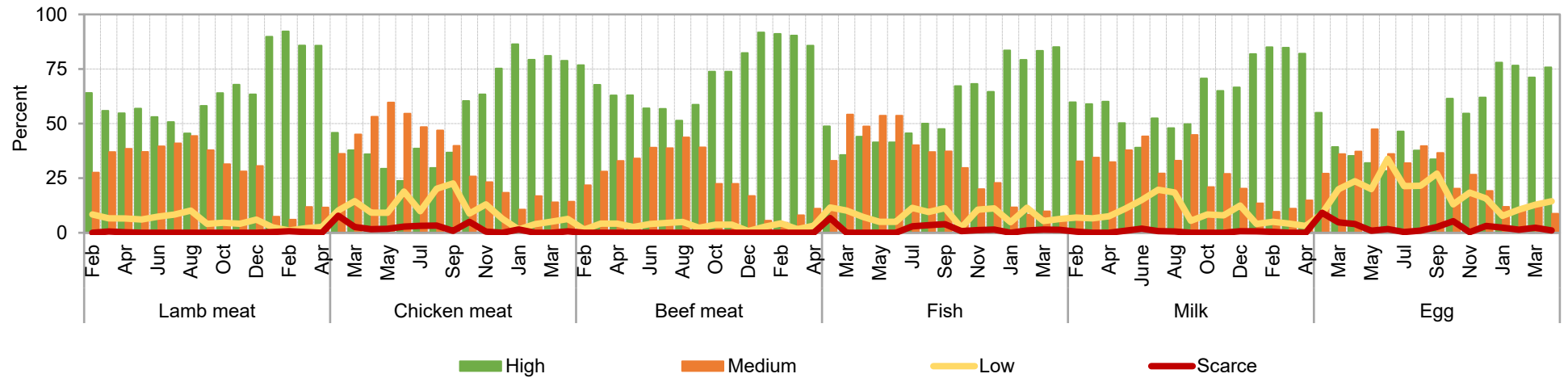
Retails prices of meat and animal products (weekly averages, SDG/kg, February 2025–April 2026) increased for all in April 2026 except for eggs (remained stable) and fish (slightly decreased in the second week).



The heatmap of retail prices of meat and animal products across states (1,000 SDG/kg) for March-April 2026, indicates that in April 2026, Darfur and Kordofan regions recorded lower prices than other regions except for chicken and fish in West Darfur and lamb, chicken and beef in North Kordofan.

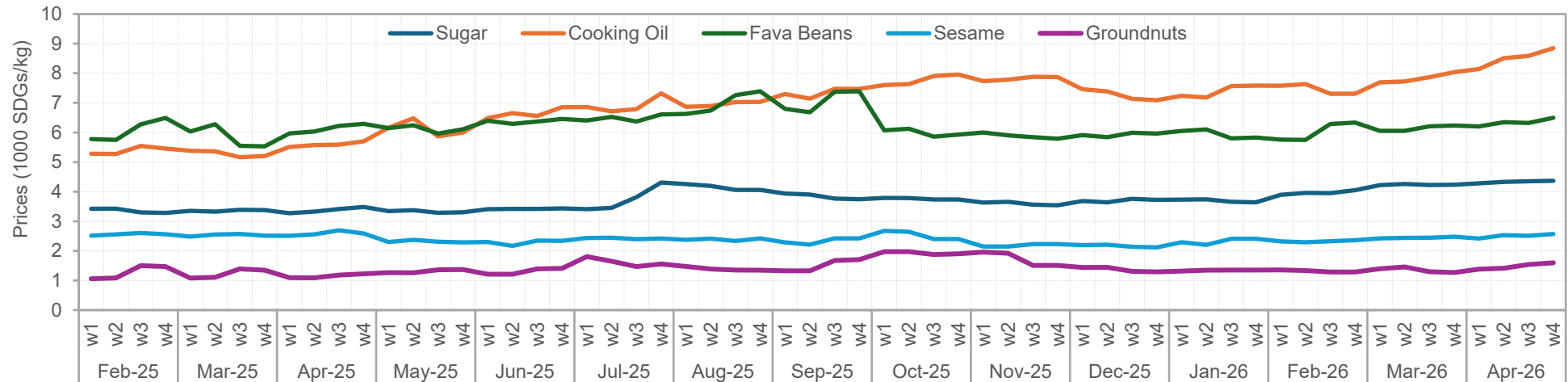


Perceived high availability scores for meat and animal products (February 2025–April 2026) declined for chicken, beef, and milk, increased for fish and eggs, while it remained stable for lamb in April 2026.



Oilseeds, Cooking Oil, Sugar, and Fava Beans

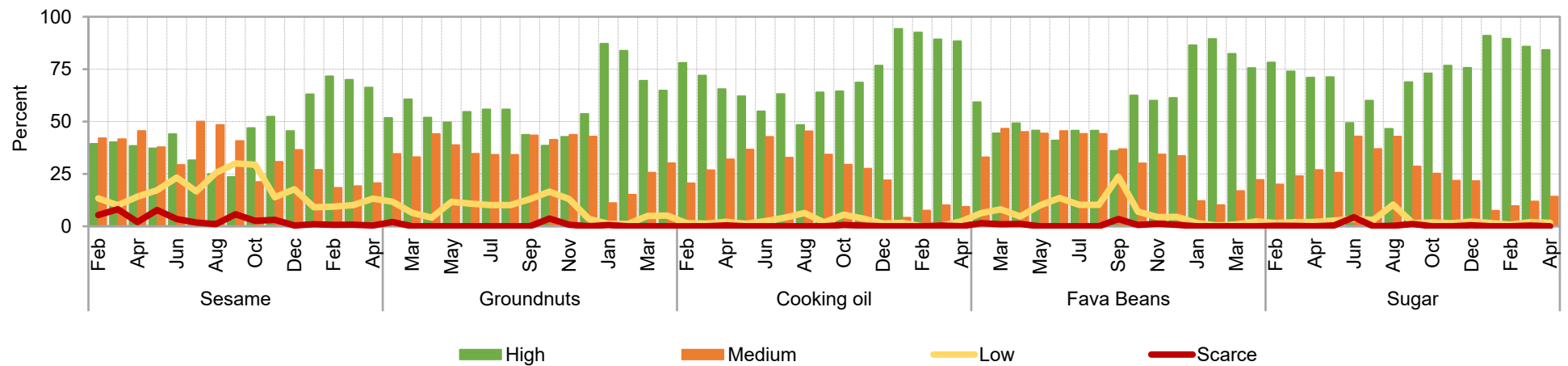
Retail prices of oilseeds (kg), cooking oil (liter), sugar (kg), and fava beans (kg) (1,000 SDG) from February 2025 to April 2026 increased for fava beans, cooking oil and groundnuts, while remaining relatively sugar and sesame in April 2026.



The prices heatmap of oilseeds, cooking oil, sugar, and fava beans across states (1,000 SDG) for February–April 2026, indicates that the Darfur states recorded lower prices for cooking oil, sesame, and groundnuts, while Kordofan and Khartoum states reported relatively higher prices.

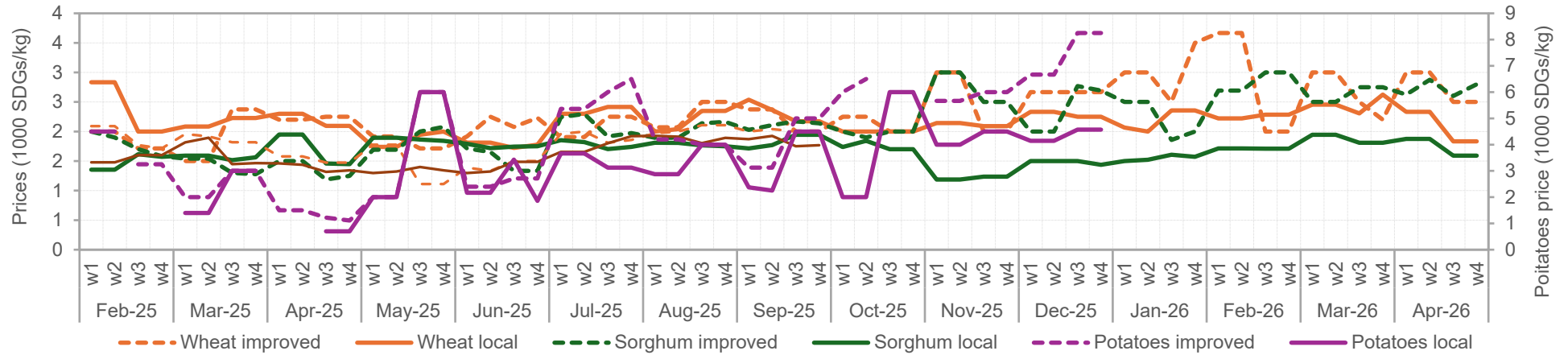


Perceived high availability scores for oilseeds, cooking oil, sugar, and fava beans (February 2025–April 2026) declined for all commodities in April 2026.



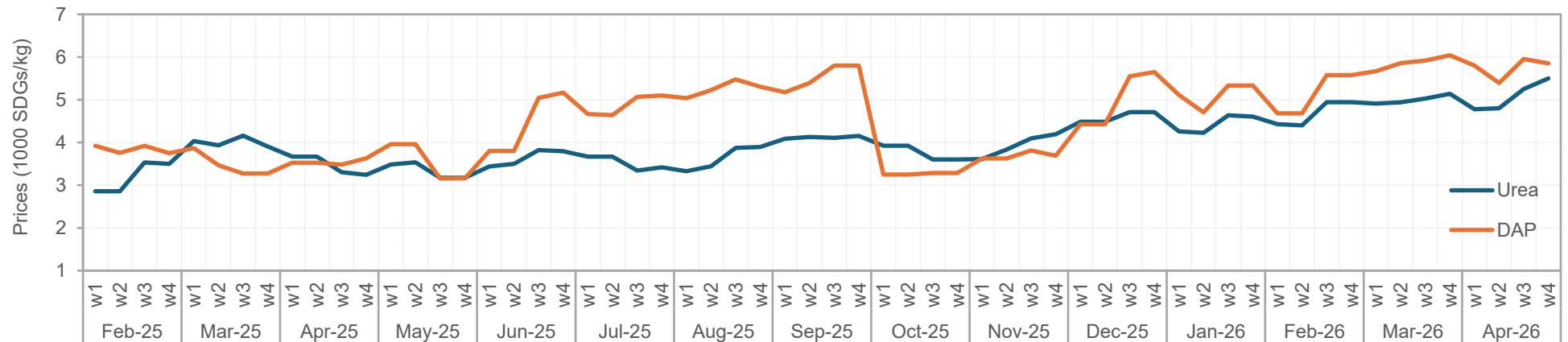
Seeds (Improved and Local)

Retail seed prices (1,000 SDG/kg, monthly averages, February 2025– April 2026) for wheat seed declined (local)/ increased then declined (improved) in April 2026, while those of sorghum slightly fluctuated (improved)/ declined (local), while those of sorghum slightly fluctuated (improved)/ declined (local).

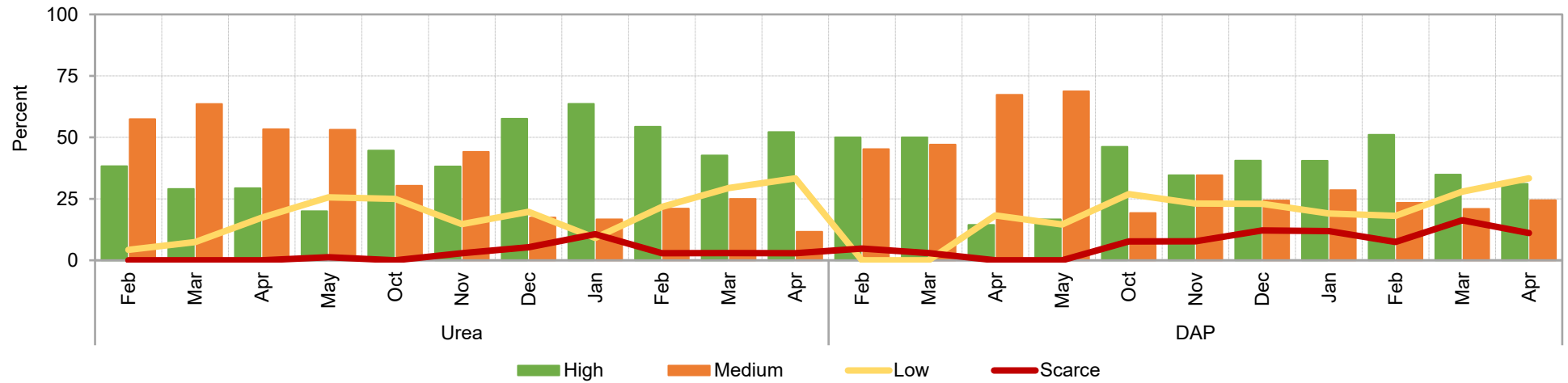


Fertilizers

Retail fertilizer prices (1,000 SDG/kg, monthly averages, February 2025–April 2026) declined sharply in the first two weeks of April before they restore their March level in the last week. Since December 2025, DAP prices remained consistently higher than those of urea.

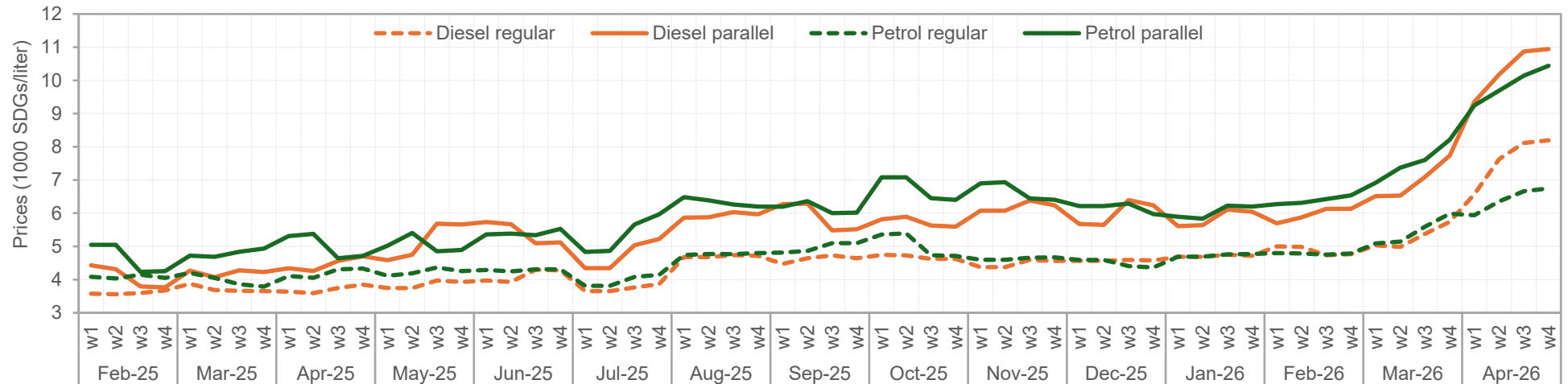


Perceived high availability scores (February 2025– April 2026) indicate that in April 2026, high availability of urea improved compared to March, while high availability of DAP declined.

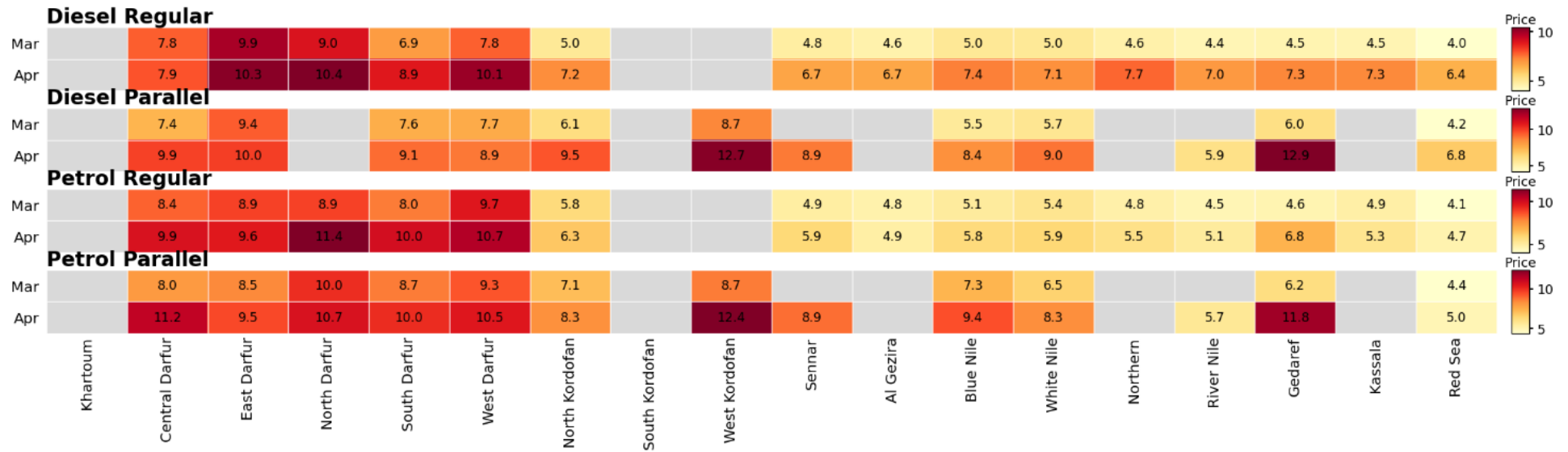


Diesel and Petrol

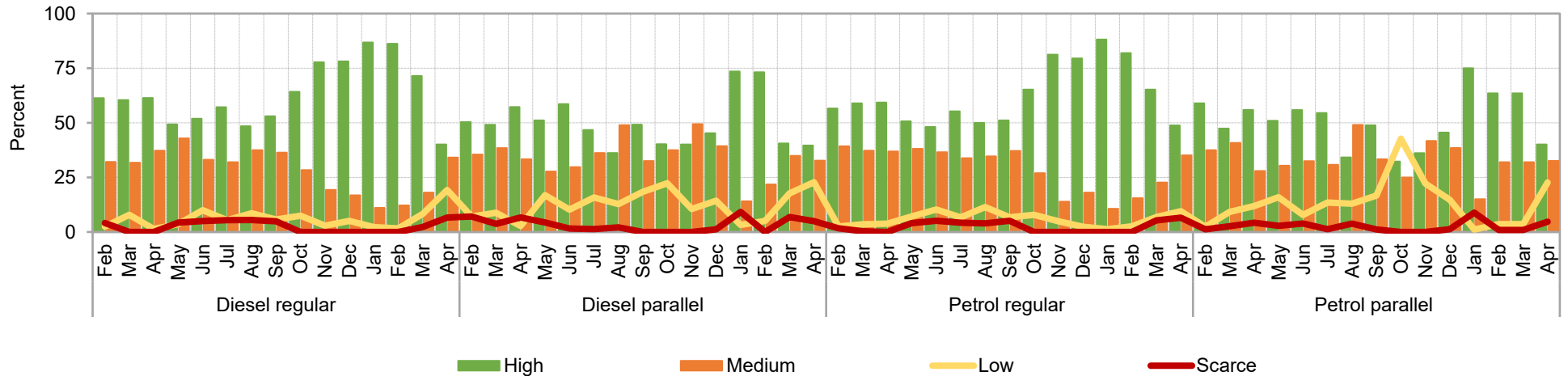
Retail fuel prices (SDG/liter, monthly averages, February 2025– April 2026) in both regular and parallel markets have been increasing since February. Overall, diesel and petrol prices are consistently higher in the parallel market compared to corresponding prices in the regular market.



Retail fuel prices heatmap across states (1,000 SDG/liter), February 2025– April 2026), shows prices remained substantially higher in the Darfur states, particularly North Darfur, East Darfur, and West Kordofan, compared with other regions. Gadaref also witnessed high parallel market prices in April.

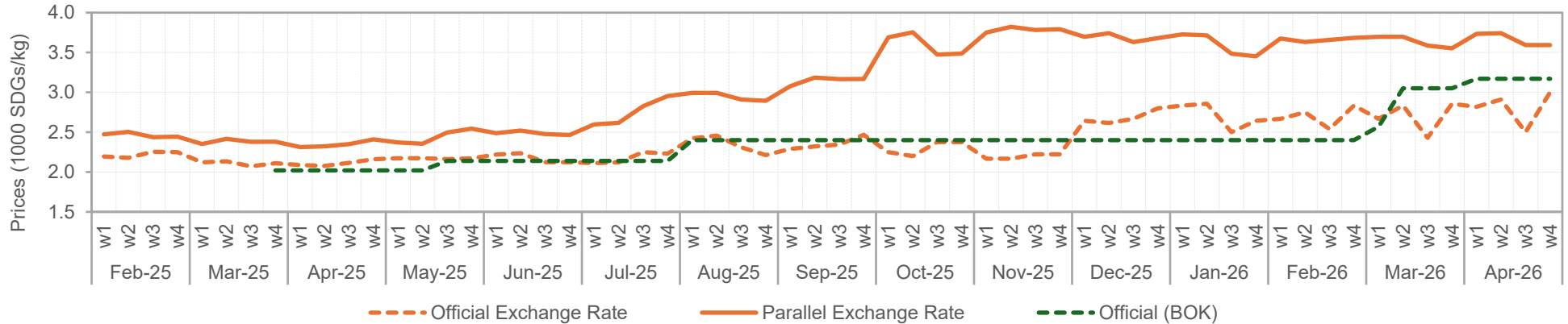


Perceived high fuel availability scores (February 2025–April 2026) in the regular and parallel markets decreased during April compared to February and March.



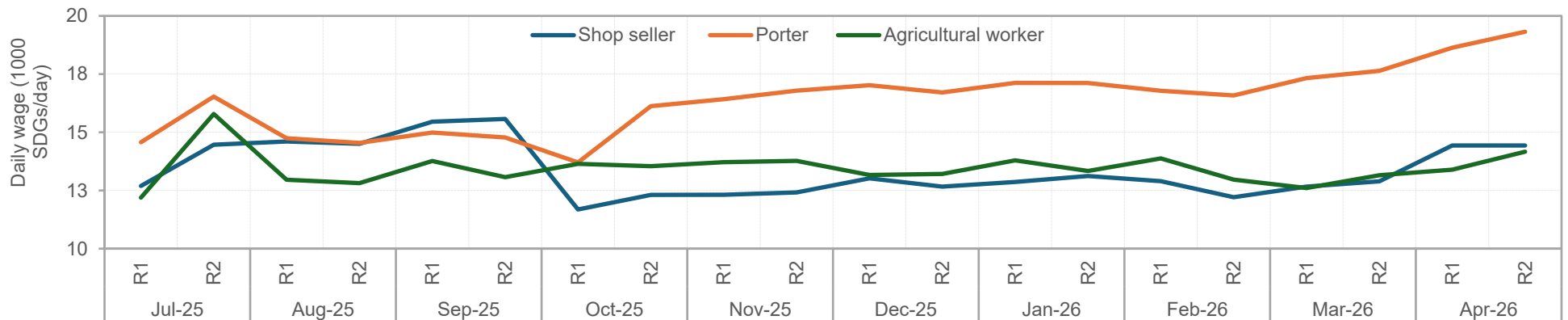
Exchange Rates

Exchange rate (SDG per US dollar), February 2025– March 2026, in the parallel market fluctuated slightly during April. The official exchange rate, however, fluctuated significantly. The persistent wide gap between the parallel and official rates continues during April. The persistent wide gap between the parallel and official rates continues during April.

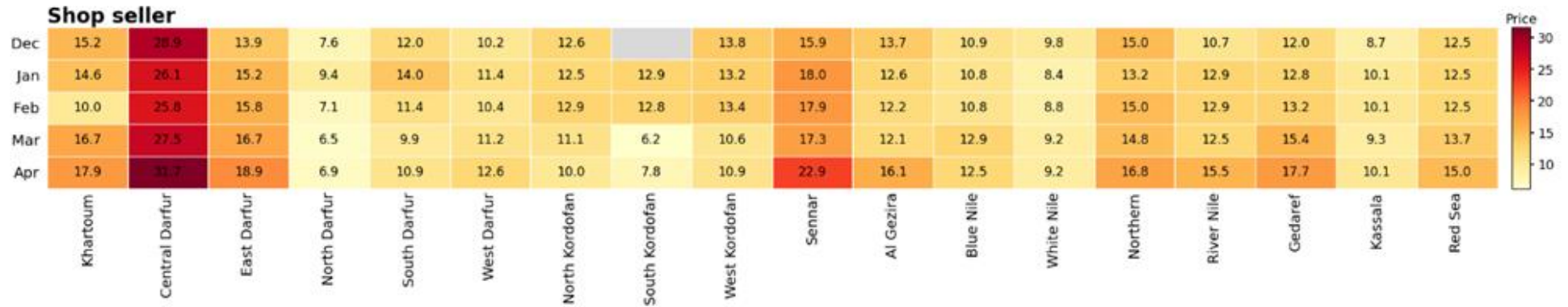


Labor wages

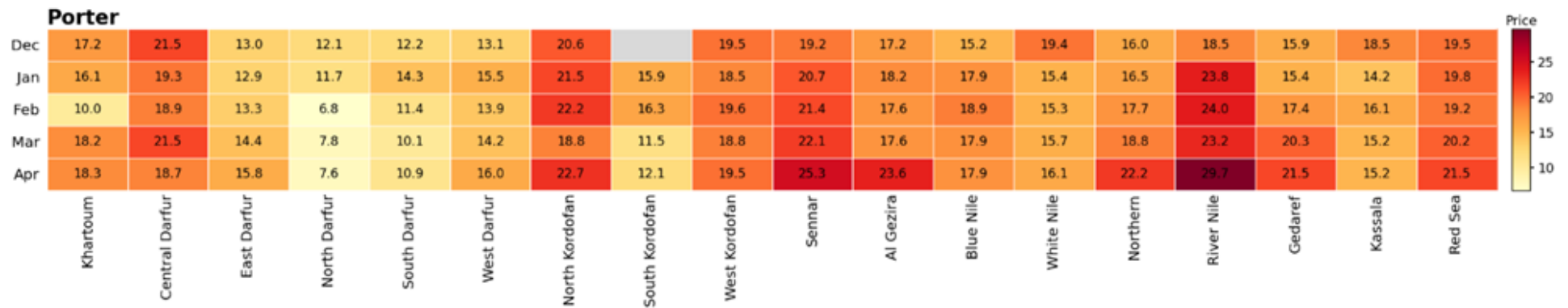
Labor daily wages (biweekly averages, SDG/day, July 2025–April 2026), for porter remained the highest and continued to increase since February 2026. Wages for agricultural workers and shop sellers remained relatively stable although later became higher than the former during April.



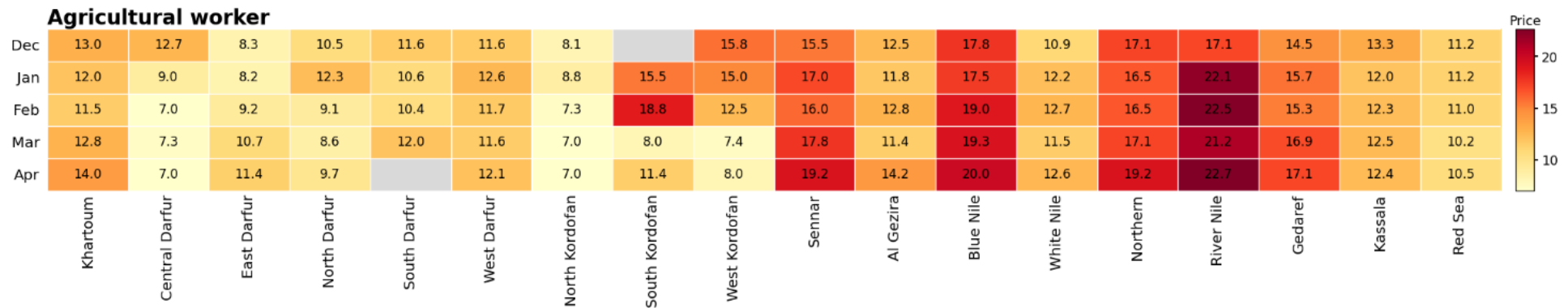
Shop seller daily wages heatmap across states (1,000 SDG/day), December 2025– April 2026, shows that wages remained largely stable between January and April 2026 and higher in Central Darfur than other states. shows that wages remained largely stable between January and April. However, shop sellers' daily wage is relatively higher in Central Darfur compared to other states, followed by Sennar, Khartoum and East Darfur.



Porter daily wages heatmap across states (1,000 SDG/day), December 2025– April 2026, shows that wages remained largely stable between February and April with River Nile State recording higher wages since February 2026 than other states, followed by Sennar and North Kordofan.



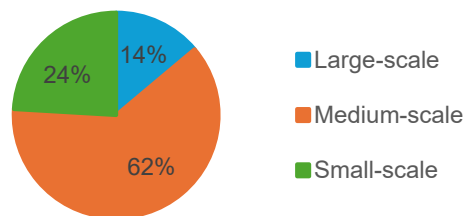
Agricultural workers' daily wages heatmap across states (1,000 SDG/day), December 2025 to March 2026, shows that wages remained broadly stable across most states during the period. The main exception was South Kordofan, where wages declined sharply, falling to nearly half their February levels. River Nile State consistently recorded the highest wage levels, particularly during February to April 2026.



Market Actors' Perceptions

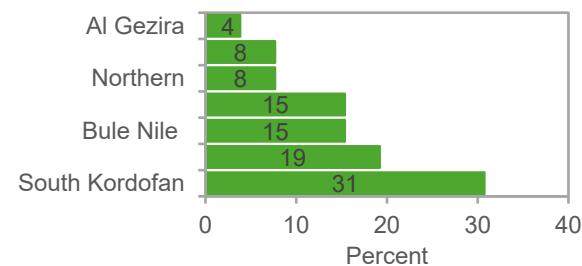
Size of merchants in the market

The distribution of merchants by trading scale (N=108) indicates that medium-scale traders account for 62 percent of all merchants and are primarily concentrated in Red Sea, Northern, and West Darfur states. Large-scale traders are predominantly located in Blue Nile State, while small-scale traders are more common in Blue Nile, North Kordofan, and Gedaref states.



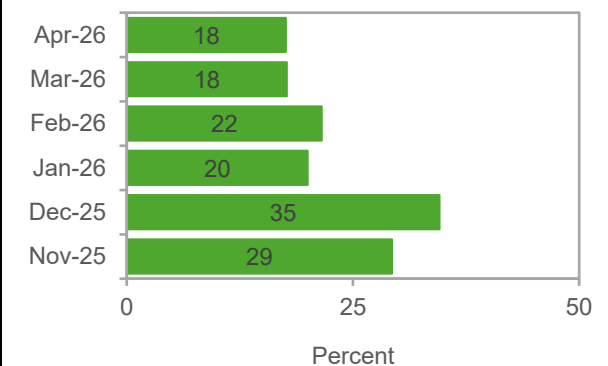
Supply Chain and Logistical Challenges Facing Merchants

In April 2026, 24 percent of merchants reported facing supply chain and logistical challenges, marking a 6 percentage points increase compared to March 2026. The highest proportion of challenges (N=26) were observed in South Kordofan (31 percent), and Khartoum (19 percent).



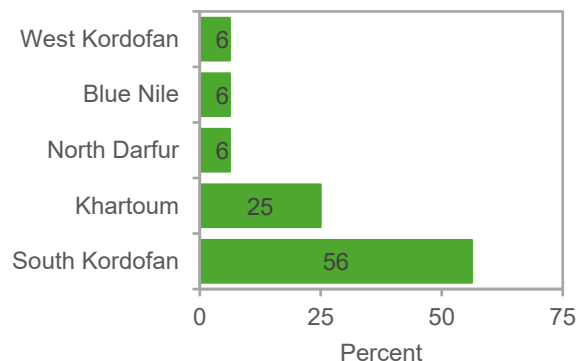
Changes in Demand Conditions

Changes in demand conditions (N=19) peaked in December 2025 (35 percent) before declining to 22 percent in February and 18 percent in March and April 2026, respectively.



Financial and Liquidity Constraints

In April 2026, 15 percent of merchants reported facing financial and liquidity challenges compared to 13 percent in March. Merchants (n=16) in South Kordofan state comprise the highest proportion of merchants reporting financial and liquidity constraints, followed by Khartoum.

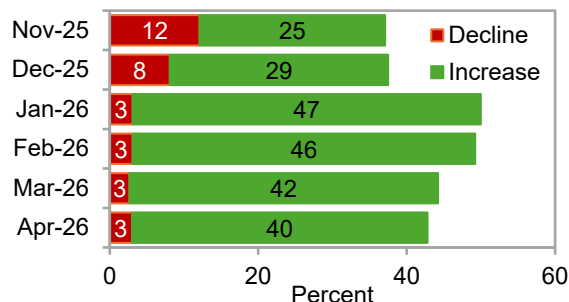


Storage and Power Access

The proportion of merchants reporting no storage constraints remained at 99 percent in March and April 2026. This pattern suggests that storage constraints were negligible among traders across all states.

Profits and Profitability Trends

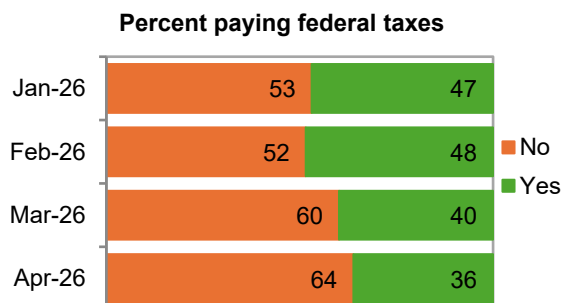
The share of merchants (November 2025 – April 2026) reporting increased profit margins decreased from 42 in March to 40 percent April 2026.



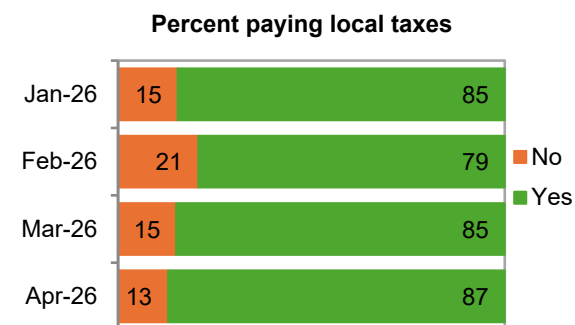
The highest share of merchants reporting profit increases are in South Kordofan, White Nile, and West Darfur states, while those reporting stable profit are in Northern, North Kordofan and Blue Nile states. Declines in profit margins were limited and concentrated only in Al Gezira, West Kordofan and North Darfur states.

Taxes and Fees

The share of merchants reporting payments of federal taxes and government fees (January 2026–April 2026) declined from 40 percent in March 2026 to 36 percent in April 2026. Most merchants reporting federal tax payments were in Northern and North Kordofan states.

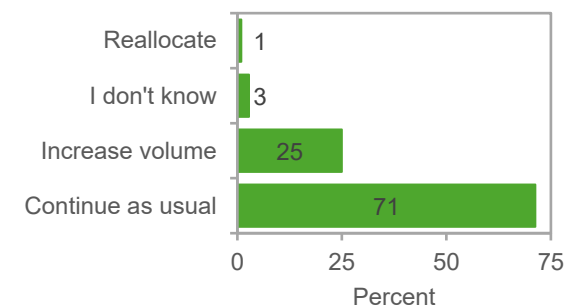


Conversely, the share of merchants paying state and locality-level fees increased from 85 percent in March 2026 to 87 percent in April 2026, with most payments reported in Northern and Blue Nile states.



Traders' Future Outlook

Traders' outlook for the next 1–3 months (from April 2026) indicate that 71 percent of surveyed merchants plan to continue trading as usual (down from 72 percent in March 2026). Merchants in South Kordofan, White Nile, and Blue Nile states account for the highest share intending to increase trade volumes.



ABOUT THE AUTHORS

Tarig Rakhy is a Research Analyst in IFPRI's DSG Unit, based in Elobied, Sudan. **Shima Mohamed** is a Research Analyst in IFPRI's DSG Unit, based in Cairo, Egypt. **Hala Abushama** is a Research Analyst in IFPRI's DSG Unit, based in Cairo, Egypt. **Halefom Yigzaw Nigus** is a Research Collaborator in the DSG Unit of IFPRI, based in Addis Ababa, Ethiopia. **Gotada Suliman** is a Research Analyst in IFPRI's DSG Unit, based in Khartoum, Sudan. **Khalid Siddig** is Senior Research Fellow in IFPRI's DSG Unit and the Leader of IFPRI's Sudan and Kenya Strategy Support Programs, based in Nairobi, Kenya and an Associate Professor at Khartoum University, Sudan.

ACKNOWLEDGMENTS

This research was supported by the Netherlands Embassy for Sudan and the Food and Agriculture Organization of the United Nations (FAO). This partnership enables sustained production and use of timely, reliable, and publicly available market data in one of the world's most challenging contexts.

Citation: Rakhy, Tarig; Mohamed, Shima; Abushama, Hala; Nigus, Halefom Yigzaw; Suliman, Gotada; and Siddig, Khalid. 2026. Essential commodities prices, availability, and market actors' perceptions: April 2026. Sudan Market Prices and Availability Report 15. Washington, DC: International Food Policy Research Institute.

The Sudan Strategy Support Program (SSSP) is managed by the International Food Policy Research Institute (IFPRI). This publication has been prepared as an output of the SSSP and has not been independently peer reviewed. Any opinions expressed here belong to the author(s) and are not necessarily representative of or endorsed by IFPRI.

INTERNATIONAL FOOD POLICY RESEARCH INSTITUTE

A sustainable world free of poverty, hunger, and malnutrition

IFPRI is a CGIAR Research Center

IFPRI Sudan, Arab Organization for Agricultural Development (AOAD), 7th Amarat Street | P.O. Box 474 – 11111 | Khartoum, Sudan

Email: ifpri-sudan@cgiar.org | <https://sudan.ifpri.info/>

© 2026, copyright remains with the author(s). All rights reserved.