



INTERNATIONAL  
FOOD POLICY  
RESEARCH  
INSTITUTE



*at a*

**GLANCE**

The background is a vibrant green with a series of curved, parallel lines that create a sense of depth and movement, resembling a field of crops or a stylized globe. Two small, green sprouts with two leaves each are positioned at the top of the image, one slightly to the left and one to the right, appearing to grow from the top edge of the curved lines.

VISION

*A world free of*

**HUNGER** *and*

**MALNUTRITION**

The background features three green seedlings of varying heights and stages of growth, positioned in the upper half of the frame. Below them, a series of curved, parallel lines in shades of green sweep across the lower half, creating a sense of movement and growth. The overall color palette is a range of greens, from light to dark.

# MISSION

To provide research-based policy solutions that sustainably reduce poverty and end hunger and malnutrition.

**THE INTERNATIONAL FOOD POLICY RESEARCH INSTITUTE (IFPRI)** believes that by working together, the global community can sustainably reduce poverty and end hunger and malnutrition. IFPRI provides cutting-edge research and policy options on food and nutrition security to support these goals. For 50 years, IFPRI has collaborated with stakeholders and partners to contribute needed evidence for country- and region-led policies that help ensure that all people have access to safe, sufficient, nutritious, and sustainably grown food.

*What is*

# FOOD POLICY?

**"FOOD POLICY"**

refers to the collection of decisions made by governments, civil society, businesses, and international organizations that shape our food systems, including production, processing, distribution, and consumption of food.



# What WE DO

## **IFPRI'S RESEARCHERS**

provide policymakers, donors, civil society, the private sector, and farmer organizations with rigorous, policy relevant research. Sharing this research and engaging with stakeholders through capacity building and dialogue helps inform effective policies, programs, and investments that contribute to productive, sustainable, and resilient agriculture and food systems.

## **USING AN INTERDISCIPLINARY APPROACH, IFPRI RESEARCHERS ANSWER QUESTIONS SUCH AS:**

*What policies help farmers manage scarce resources more sustainably?*

*What investments can support lifelong nutrition and good health for rural and urban populations?*

*How can agricultural growth and rural development be made more equitable and inclusive?*

*How can markets better serve small producers, men and women, and poor consumers to provide sufficient nutritious food for all?*

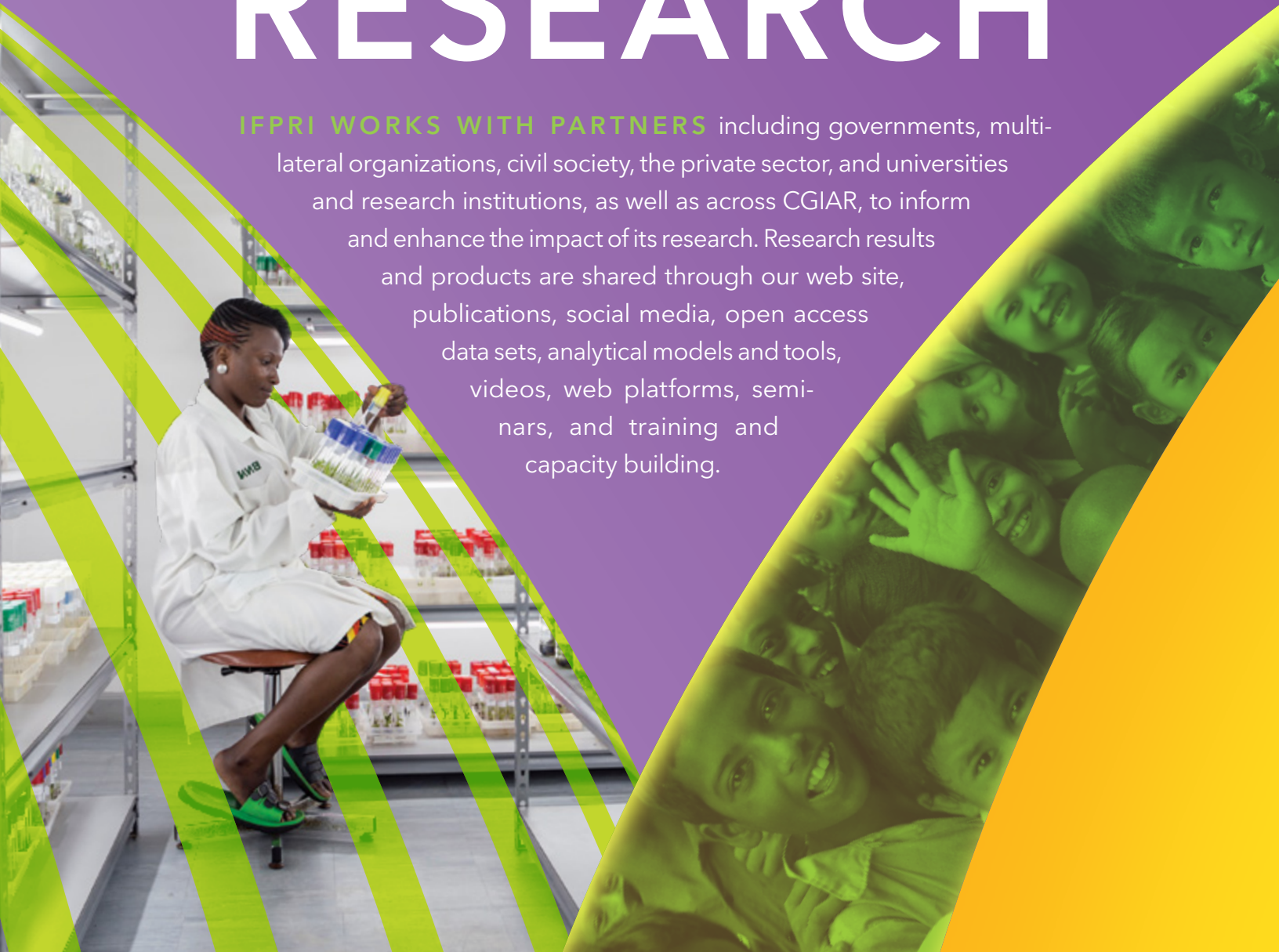
*How can countries promote sustainable development that doesn't leave poor people behind?*

# *IFPRI and* CGIAR

**IFPRI IS A RESEARCH CENTER OF CGIAR**, the world's largest global agricultural innovation network, and pursues many of its core themes jointly through its 2025-2030 Research Portfolio. This portfolio leverages synergies across CGIAR, working through five major impact areas, to advance our joint mission of transforming food systems for a sustainable, climate-resilient world free from hunger and malnutrition.

## *Sharing our* **RESEARCH**

**IFPRI WORKS WITH PARTNERS** including governments, multi-lateral organizations, civil society, the private sector, and universities and research institutions, as well as across CGIAR, to inform and enhance the impact of its research. Research results and products are shared through our web site, publications, social media, open access data sets, analytical models and tools, videos, web platforms, seminars, and training and capacity building.



# How IFPRI makes a DIFFERENCE

## IFPRI CONTRIBUTES

to policies and programs that benefit millions around the world.

Through research and capacity strengthening, IFPRI's work informs better policy decisions, agenda-setting, and investments made by governments, funders, and partner organizations, helping to reduce poverty and end hunger and malnutrition. IFPRI's work contributes to:



INVESTING IN  
SOCIAL PROTECTION



SUPPORTING AGRICULTURAL  
TRANSFORMATION



PROMOTING  
SUSTAINABILITY



INCREASING ACCESS  
TO NUTRITION



IMPROVING ACCESS  
TO MARKETS



ENHANCING  
RESILIENCE



IMPROVING FOOD  
SECURITY PROGRAMS



FACILITATING INCLUSIVE  
TRADE SYSTEMS



INFORMING INSTITUTIONAL  
DEVELOPMENT



SCALING UP PRO-POOR  
INVESTMENTS



INCORPORATING GENDER  
INTO RESEARCH AND POLICY



STRENGTHENING  
CAPACITY

# *Our research* **STRATEGY**



*Promoting  
healthy diets  
and nutrition  
for all*



*Fostering a  
climate-resilient  
and sustainable  
food supply*



*Building inclusive  
and efficient markets,  
trade systems, and  
food industries*

**IN THIS  
COMPLEX AND  
FAST-CHANGING WORLD,**  
IFPRI's strategy focuses on five  
key research areas essential to  
addressing poverty, hunger,  
and malnutrition in the face  
of new challenges. All IFPRI's  
research work takes  
gender into account.



*Strengthening  
institutions  
and governance*

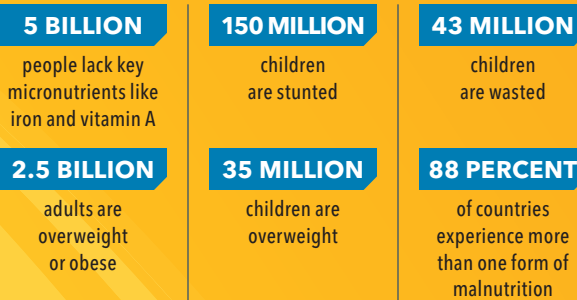
*Transforming  
agricultural and  
rural economies*

# What are the CHALLENGES to global food security?

GLOBAL, REGIONAL, AND NATIONAL FOOD SYSTEMS face major challenges and require fundamental transformation to meet our food needs sustainably.

## MALNUTRITION

After more than a decade of improvement, hunger and malnutrition have been rising since 2015, alongside rising rates of overweight and obesity, creating a triple burden of malnutrition.

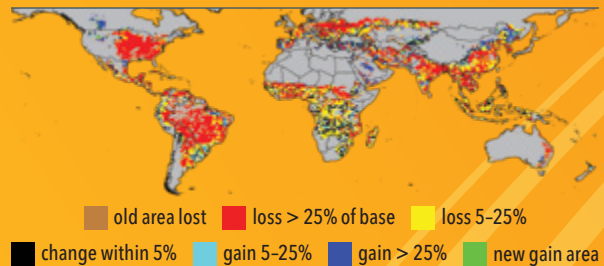


Sources: UNICEF/WHO/World Bank 2025; Global Nutrition Report 2018; World Health Organization 2025

## CLIMATE CHANGE

Rising temperatures, changes in precipitation, and extreme weather threaten food security and many livelihoods through crop losses and declining yields.

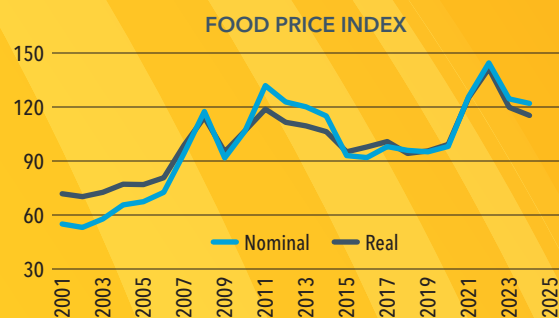
Without adaptation and improved technologies, average global maize yields could be **36% LOWER** in 2050 compared to no climate change



Source: IFPRI 2022

## RISING FOOD PRICES

Shocks from extreme weather, conflict, economic disruptions, and an epidemic have led to recent food price increases, worsening poverty, malnutrition, and hunger.



Source: FAO Food Prices Index 2025

## FORCED MIGRATION

Persistent conflicts, food crises, political instability, and climate shocks are forcing people to migrate away from their communities at an unprecedented rate.



Source: UNHCR 2022; 2024

# Where WE WORK

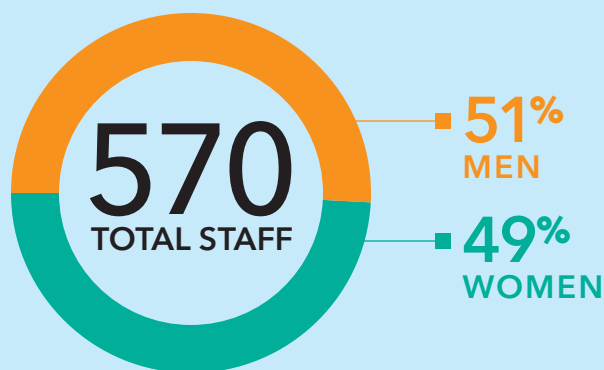
- Countries with significant research
- ★ IFPRI Headquarters
- ★ IFPRI regional office
- IFPRI country program office

**IFPRI MAINTAINS A STRONG REGIONAL AND COUNTRY PRESENCE** to respond to demand for food policy research and deliver holistic support for country-led development.

# Who WE ARE



**IFPRI IS GOVERNED BY AN INTERNATIONAL BOARD OF TRUSTEES.** Our staff come from more than 60 countries in all regions of the world.



IFPRI's work is supported by the generosity of donors from around the world including national governments, private foundations, universities, and nongovernmental organizations, as well as funding through the CGIAR Fund.

# INTERNATIONAL FOOD POLICY RESEARCH INSTITUTE

*A world free of hunger and malnutrition*

**IFPRI Headquarters**  
1201 Eye Street, NW  
Washington, DC 20005 USA  
Phone: +1-202-862-5600  
Fax: +1-202-862-5606  
Email: [ifpri@cgiar.org](mailto:ifpri@cgiar.org)

**IFPRI Africa**  
Almadies, Parcelles 22  
Zone 10, Lot 227  
Dakar, Senegal  
Phone: +221-33-869-98-00  
Email: [ifpri-dakar@cgiar.org](mailto:ifpri-dakar@cgiar.org)

**IFPRI South Asia**  
NASC, DPS Road  
Opp Todapur, Pusa, New Delhi 110012  
India  
Phone: +91-11-66166565  
Fax: +91-11-66781699  
Email: [ifpri-newdelhi@cgiar.org](mailto:ifpri-newdelhi@cgiar.org)

The boundaries and names shown and the designations used on maps do not imply official endorsement or acceptance by the International Food Policy Research Institute (IFPRI).

© 2025 International Food Policy Research Institute (IFPRI). This publication is licensed for use under a Creative Commons Attribution 4.0 International License (CC BY 4.0), <https://creativecommons.org/licenses/by/4.0/>.

**Photo credits:** Cover (l-r) – James Morgan/Panos, Ian Masias/IFPRI, Milo Mitchell/IFPRI, G.M.B. Akash/Panos, Milo Mitchell/IFPRI; p. 2 – Filipe B. Varela/Shutterstock; p. 4 – Mikkel Ostergaard/Panos; p. 6 (clockwise) – Milo Mitchell/IFPRI, Mitchell Maher/IFPRI, Tukaram Karve/Shutterstock, Tommy Trenchard/Panos, Georg Gerster/Panos; p. 10 (l-r) – Sven Torfinn/Panos, Hand Crank Films/IFPRI, Dani Bradford/IFPRI, Milo Mitchell/IFPRI

Updated August 2025

[www.ifpri.org](http://www.ifpri.org)

[www.ifpri.info](http://www.ifpri.info)

IFPRI is a CGIAR Research Center