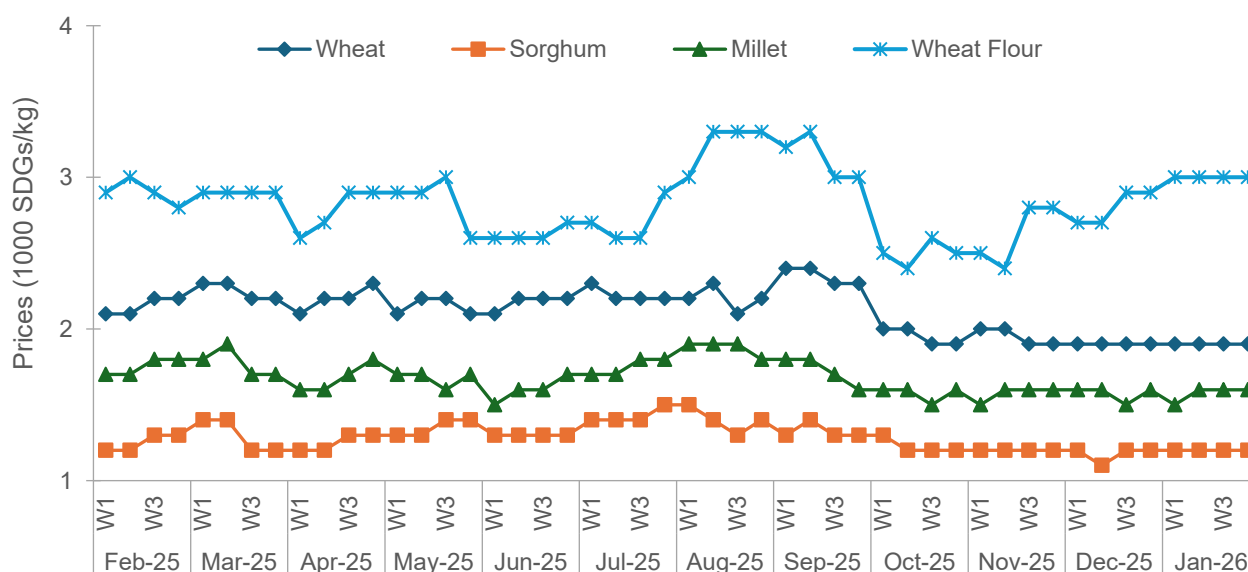


Essential Commodities Prices, Availability, and Market Actors' Perceptions

January 2026*

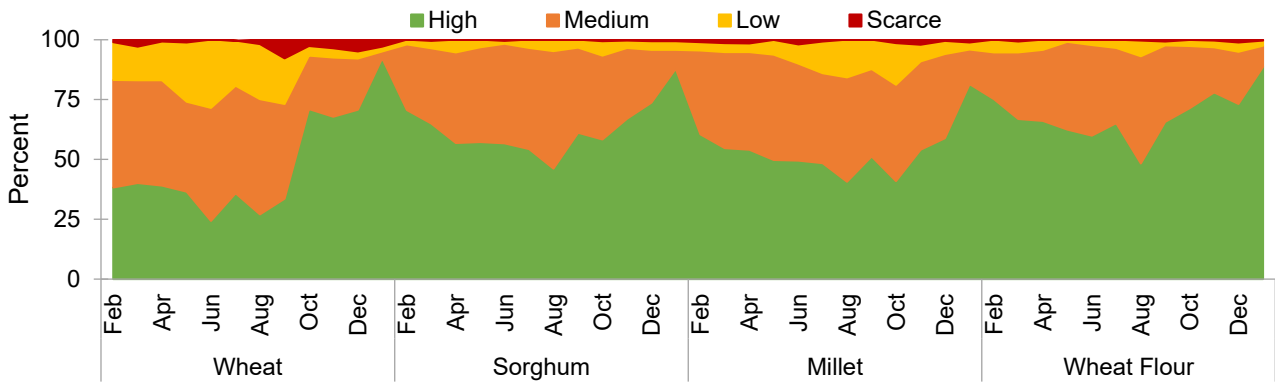
Cereals and Flour

The following figure presents weekly average local prices of vegetables (SDG/kg) from February 2025 to January 2026. Prices remained broadly stable during January 2026, reflecting relatively high market availability, as illustrated in the subsequent figure. However, wheat flour prices increased slightly compared with December 2025.

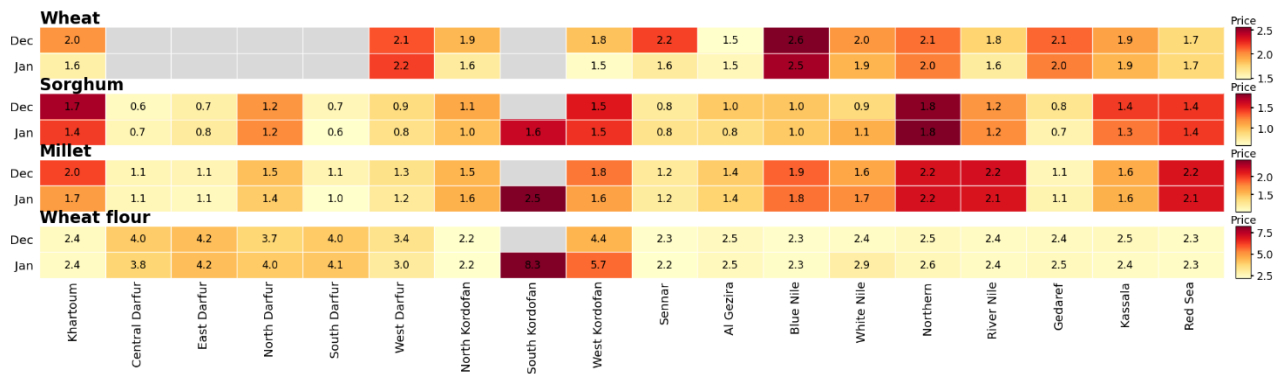


The following figure presents availability scores for cereals and wheat flour from February 2025 to January 2026. The results indicate that perceived availability improved notably in January 2026 compared with December 2025, with fewer traders reporting low or scarce availability.

* Citation: Abushama, Hala; Rakhy, Tarig; Mohamed, Shima; Nigus, Halefom Yigzaw; and Siddig, Khalid. 2026. Essential commodities prices, availability, and market actors' perceptions: January 2026. Sudan Market Prices and Availability Report 12. Washington, DC: International Food Policy Research Institute.

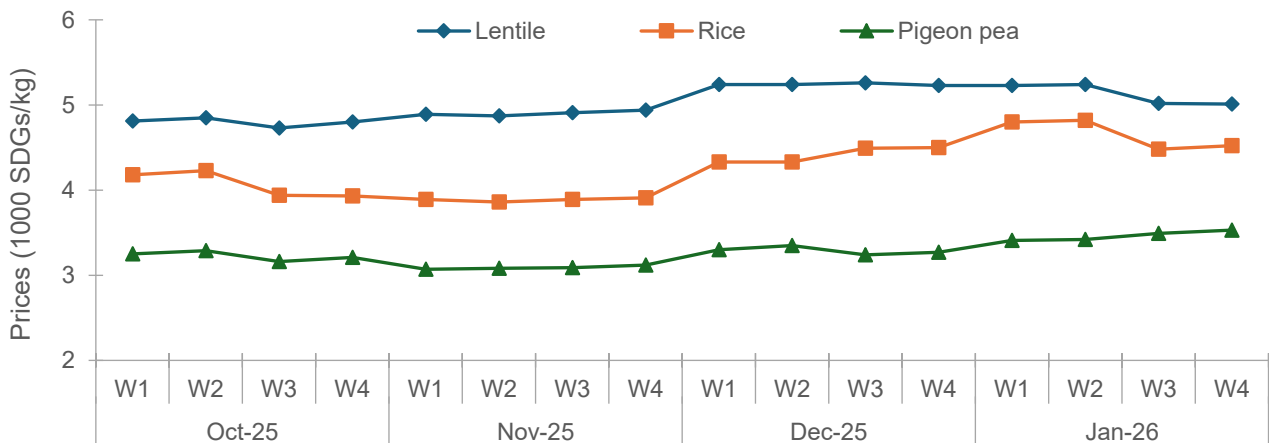


In January 2026, wheat prices were highest in Blue Nile and West Darfur. Sorghum prices were highest in Northern State and lowest in most Darfur states, as well as in Gedaref, Sennar, and Al Gezira. Millet and wheat flour recorded the highest prices in South Kordofan (heatmap).

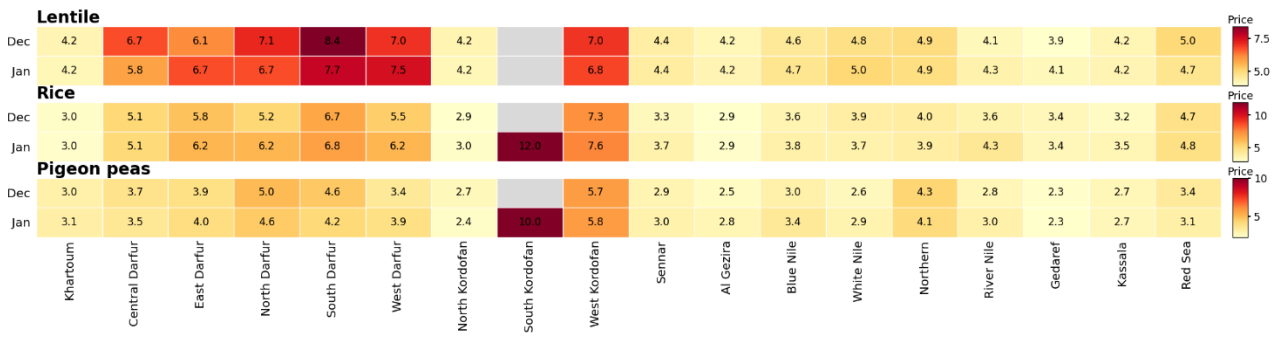


Lentils, Rice, and Pigeon Peas

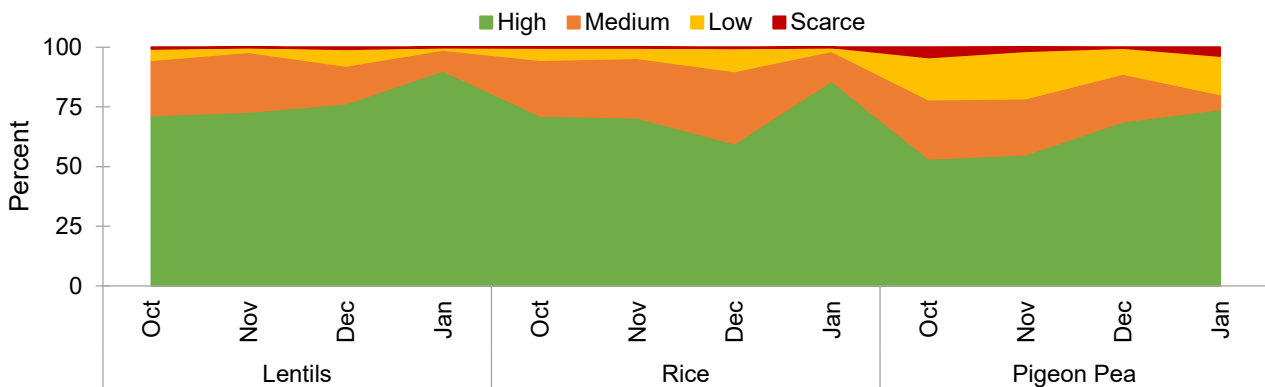
The figure on local prices of lentils, rice, and pigeon peas (weekly averages, 1,000 SDG/kg, October 2025–January 2026) shows that lentil and rice prices declined in January 2026, while pigeon pea prices increased slightly during the same period.



In January 2026, rice and pigeon pea prices were highest in South Kordofan, while lentil prices peaked in South Darfur. This is illustrated in the following figure, which presents local monthly average prices of lentils, rice, and pigeon peas across states (1,000 SDG/kg), December 2025–January 2026.

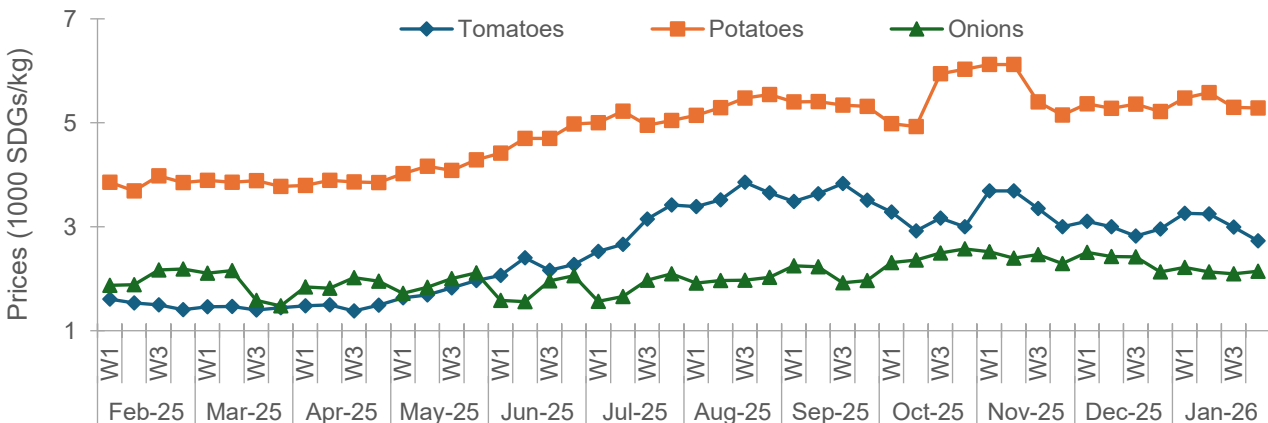


The following figure, depicting availability scores for lentils, rice, and pigeon peas (October 2025–January 2026), shows that in January 2026 the share of respondents reporting “high” availability increased for all three commodities.

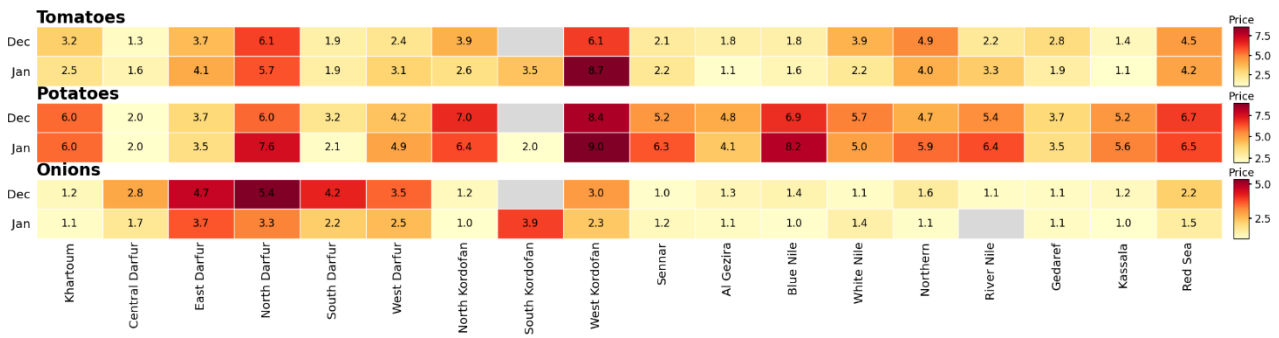


Vegetables

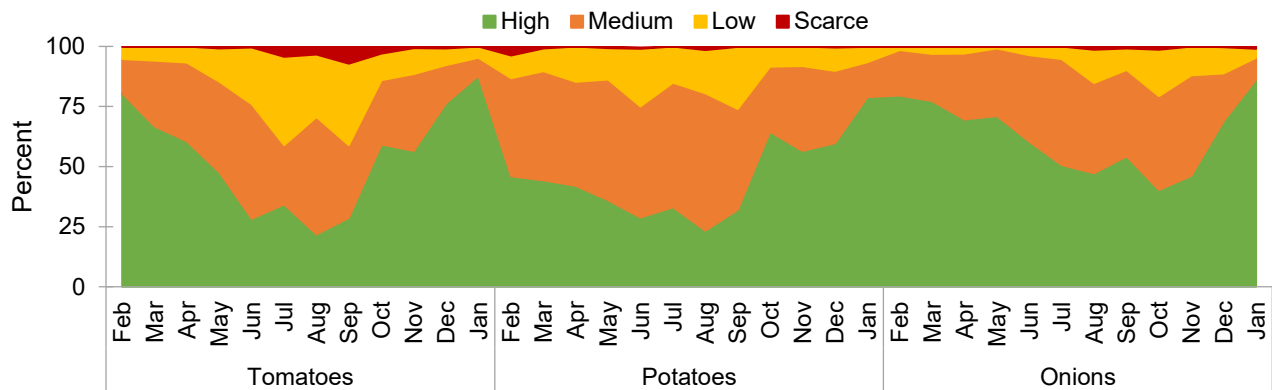
The following figure, depicting local vegetable prices (weekly averages, SDG/kg, February 2025–January 2026), shows that in January 2026 potato and tomato prices increased slightly compared with December before stabilizing at lower levels toward the end of the month. In contrast, onion prices declined slightly and remained stable throughout January.



The following figure, depicting local monthly average prices of vegetables across states (1,000 SDG/kg, December 2025–January 2026), shows that the highest tomato and potato prices in January were recorded in West Kordofan. Onion prices were highest in Darfur and in South and West Kordofan, while remaining relatively low and stable across most other states.

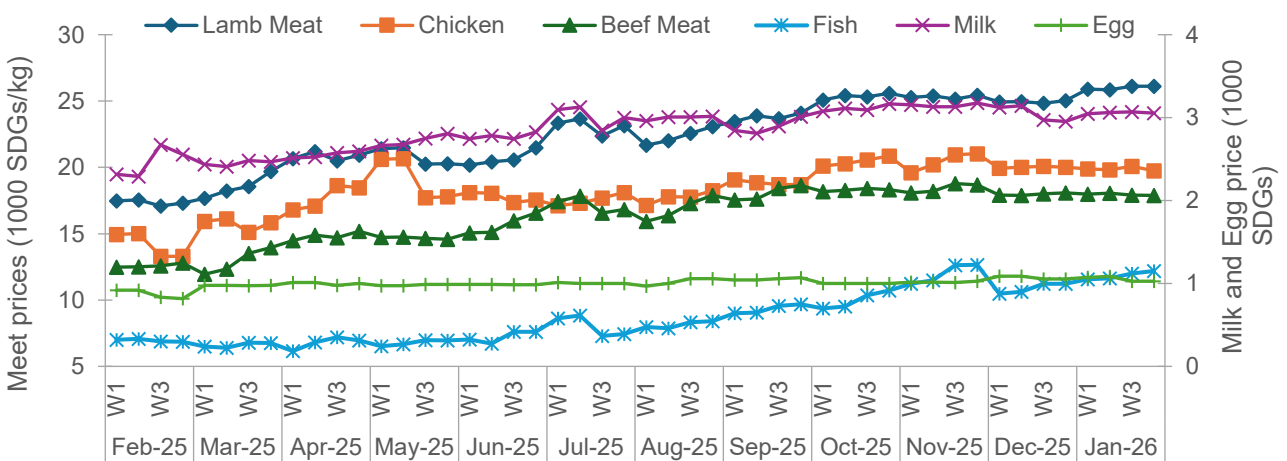


The following figure, depicting vegetable availability scores (February 2025–January 2026), shows that the share of traders reporting high availability increased in January 2026: tomatoes from 76 to 88 percent, potatoes from 60 to 79 percent, and onions from 69 to 86 percent.



Meat and Animal Products

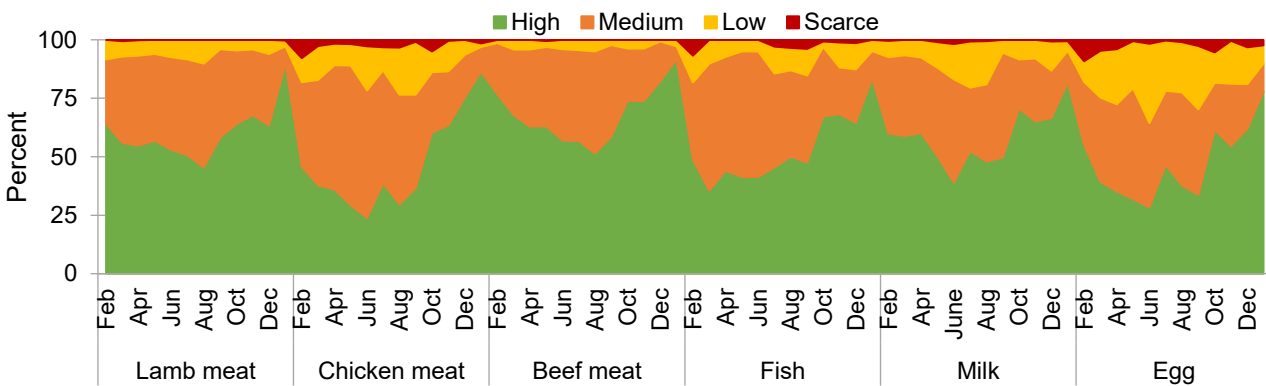
The following figure, depicting local prices of meat and animal products (weekly averages, SDG/kg, February 2025–January 2026), shows that in January 2026 lamb and fish prices increased, while prices of chicken, beef, and eggs remained stable.



The following figure, depicting local prices of meat and animal products across states (1,000 SDG/kg), December 2025–January 2026, shows that in January 2026 Red Sea recorded the highest prices for lamb, beef, and fish, while West Darfur registered the highest chicken price.

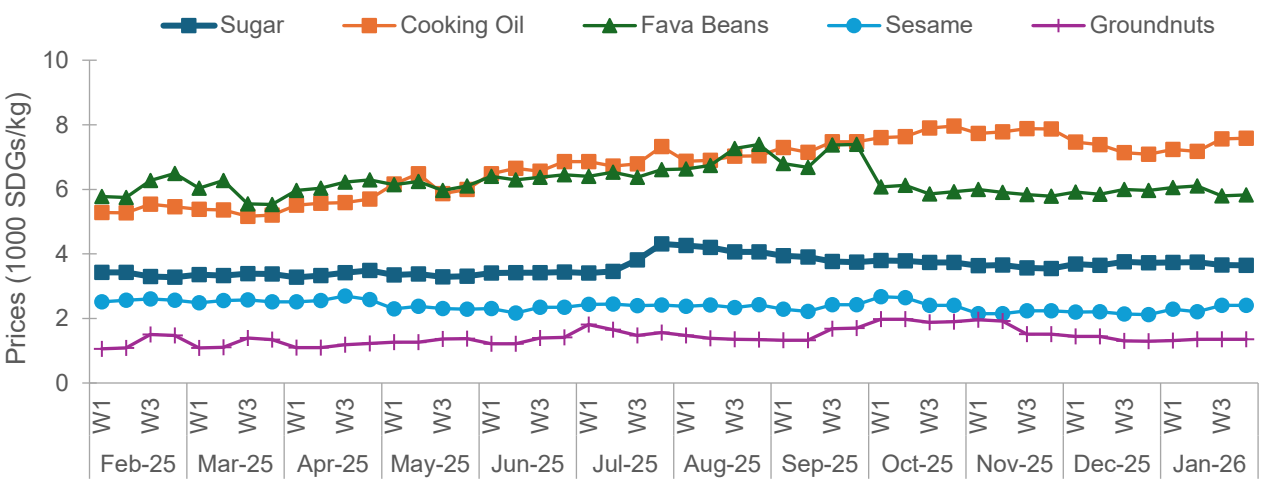


The following figure, depicting availability scores for meat and animal products (February 2025–January 2026), shows that in January 2026 the share of respondents reporting “high” availability increased across all products.

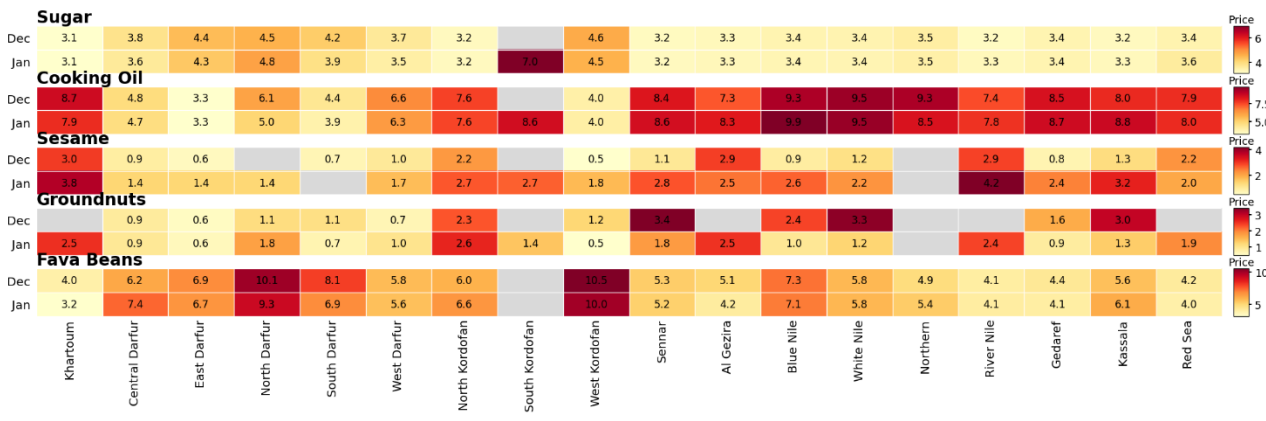


Oilseeds, Cooking Oil, Sugar, and Fava Beans

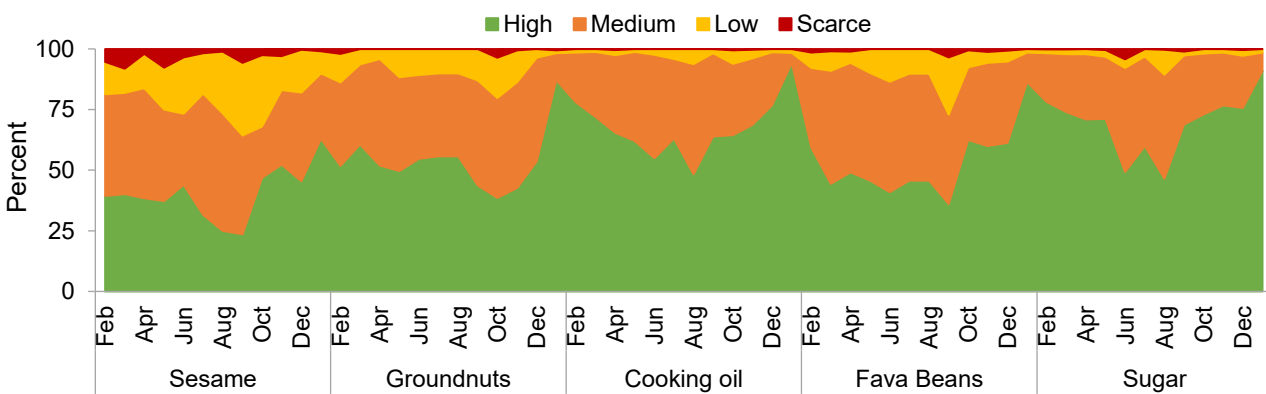
The following figure, depicting local prices of oilseeds (kg), cooking oil (liter), sugar (kg), and fava beans (kg) (1,000 SDG), February 2025–January 2026, shows that in January 2026 groundnut and sugar prices stabilized, fava bean prices declined slightly, and cooking oil prices increased marginally.



The following figure, depicting prices of oilseeds, cooking oil, sugar, and fava beans across states (1,000 SDG), December 2025–January 2026, shows that in January 2026 prices of cooking oil, groundnuts, and fava beans declined across most states compared with December 2025, while sesame prices increased in the majority of states.

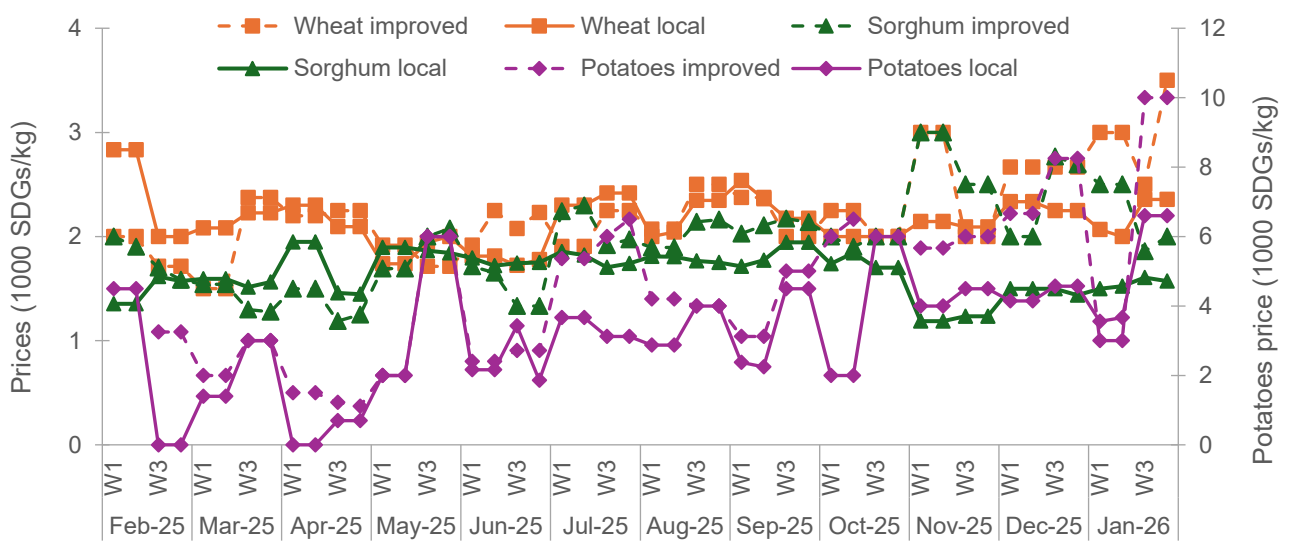


The following figure, depicting availability scores for oilseeds, cooking oil, sugar, and fava beans (February 2025–January 2026), shows that in January 2026 the share of traders reporting “high” availability increased for all four commodities compared with December 2025.



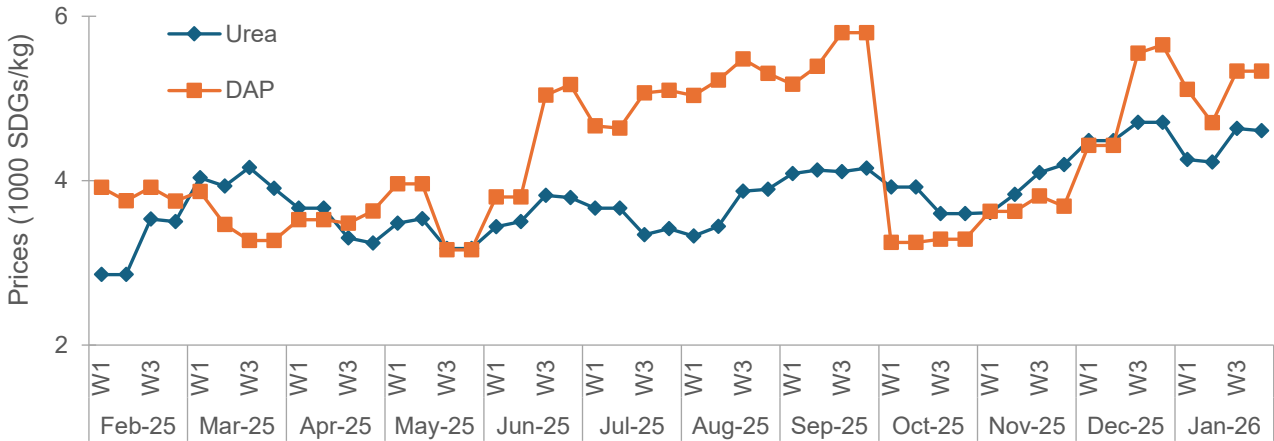
Seeds (Improved and Local)

The following figure, depicting local seed prices (1,000 SDG/kg, monthly averages, February 2025–January 2026), shows that prices of both improved and local seeds increased slightly in January compared with December, except for improved sorghum.

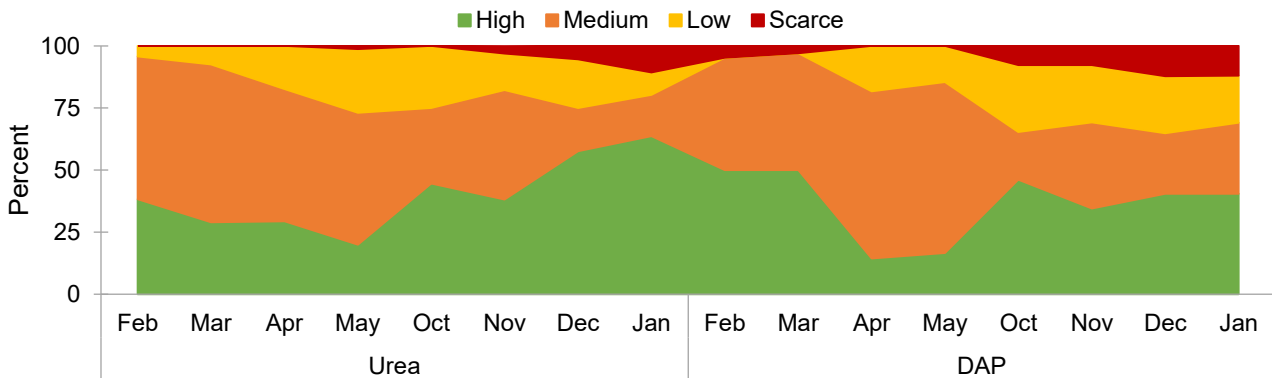


Fertilizers

The following figure, depicting fertilizer prices (1,000 SDG/kg, monthly averages, February 2025–January 2026), shows that prices declined in early January before rising slightly in the third week of the month. Throughout December and January, DAP prices remained consistently higher than those of urea.

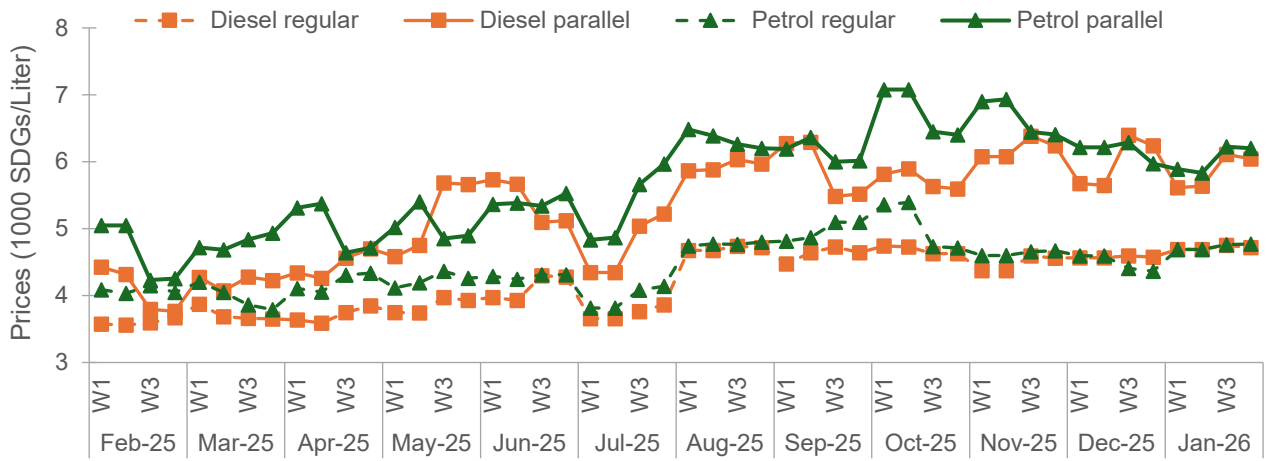


The following figure, depicting fertilizer availability scores (February 2025–January 2026), shows that the share of traders reporting high availability of urea increased from 58 percent in December to 64 percent in January, while the share reporting high availability of DAP declined slightly from 41 percent to 40 percent.



Diesel and Petrol

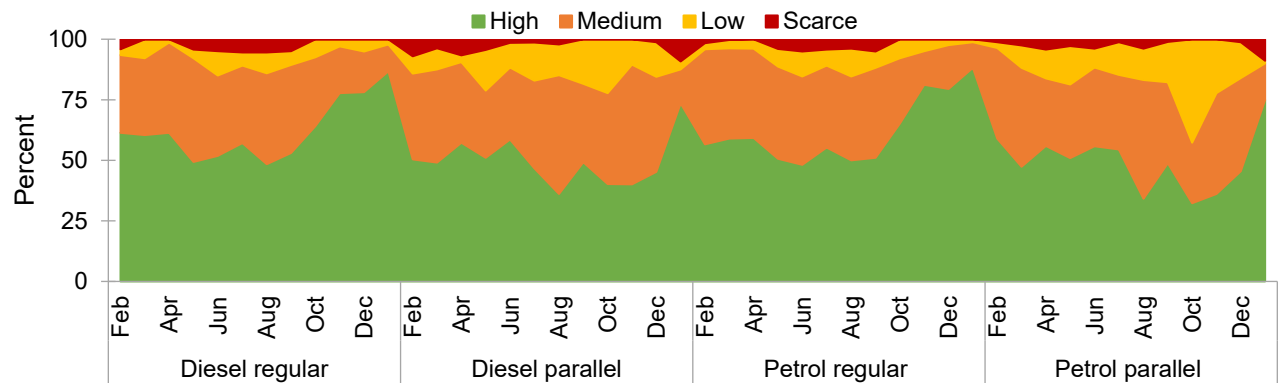
The following figure, depicting local fuel prices (SDG/liter, monthly averages, February 2025–January 2026), shows that parallel market prices declined slightly in January compared with December. In contrast, regular market prices for both diesel and petrol remained relatively stable.



The following figure, depicting fuel prices across states (1,000 SDG/liter), December 2025–January 2026, shows the spatial and temporal dynamics of fuel prices across states during this period. Prices remained substantially higher in the Darfur states, particularly North Darfur, and in West Kordofan compared with other regions.

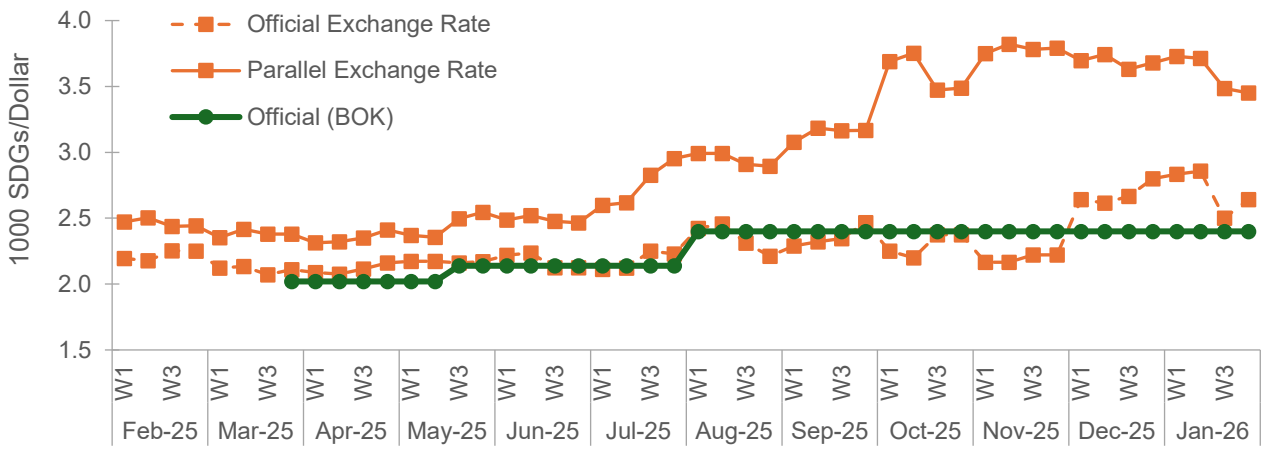


The following figure, depicting fuel availability scores (February 2025–January 2026), shows that the share of respondents reporting high availability in the parallel market increased significantly for both diesel and petrol in January, while availability in the regular market remained broadly stable.



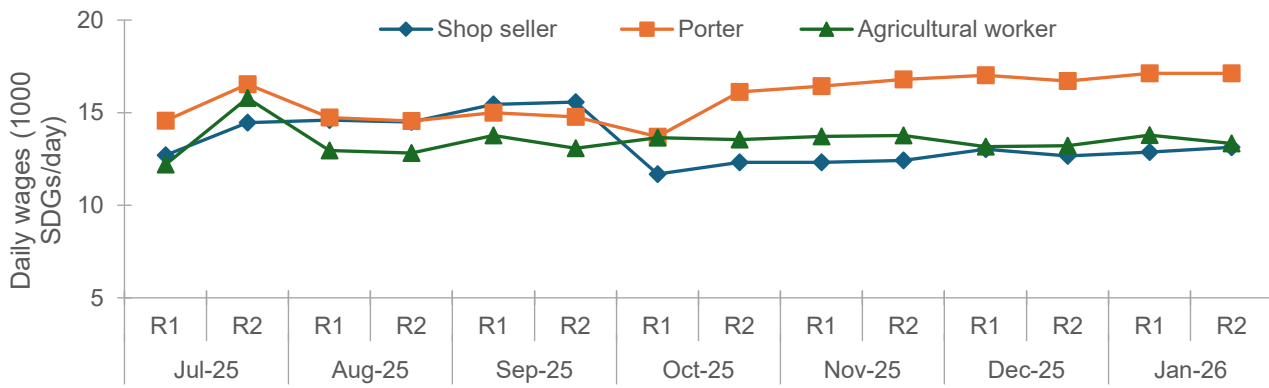
Exchange Rates

The following figure, depicting the exchange rate (SDG per US dollar), February 2025–January 2026, shows that in January the parallel exchange rate declined slightly compared with December. The official exchange rate initially decreased before rising slightly in the final week of January, leaving a wide gap between the parallel and official rates.

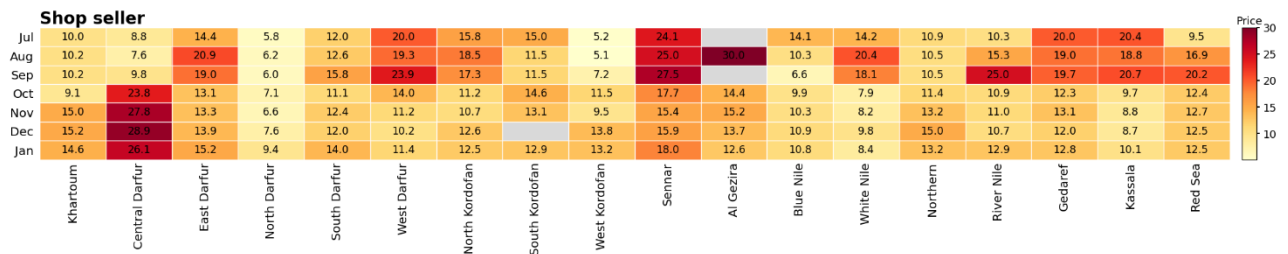


Labor wages

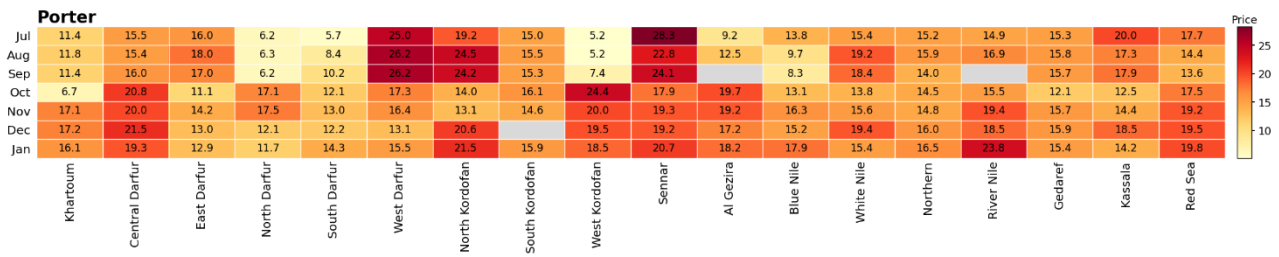
The following figure, depicting labor daily wages (biweekly averages, SDG/day, July 2025–January 2026), shows that porter wages remained the highest in January. Wages for agricultural workers and shop sellers converged toward the end of the month, while wages across all three groups remained largely stable.



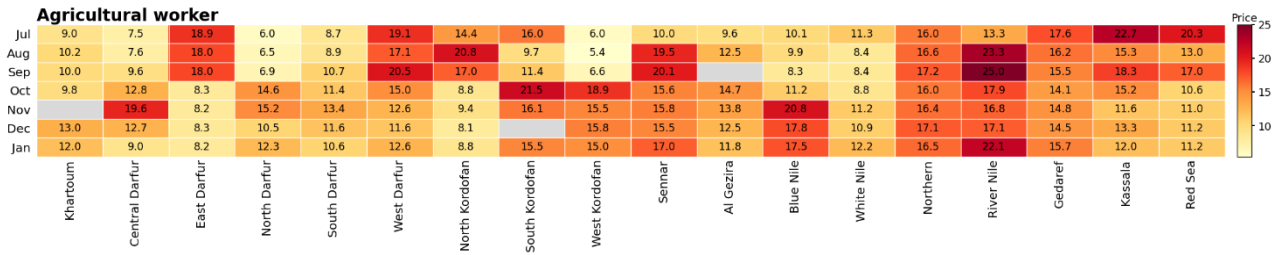
The following figure, depicting shop seller daily wages across states (1,000 SDG/day), July 2025–January 2026, shows that wages remained largely stable in December and January, with relatively higher levels in Central Darfur state.



The following figure, depicting porter daily wages across states (1,000 SDG/day), July 2025–January 2026, shows that wages remained largely stable between December and January. River Nile State recorded relatively higher porter wages in January 2026.



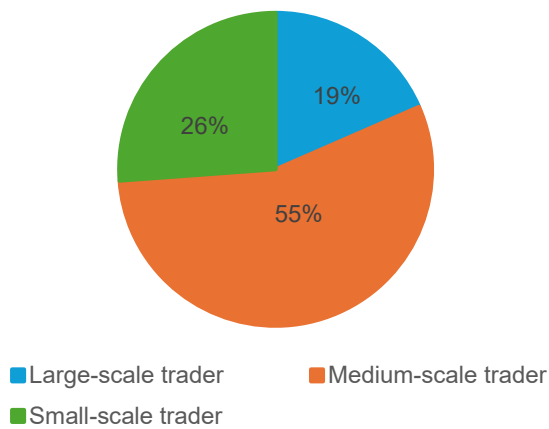
The following figure, depicting agricultural worker daily wages across states (1,000 SDG/day), July 2025–January 2026, shows that wages remained broadly stable between December and January. River Nile State recorded relatively higher agricultural wages in January 2026.



Market Actors' Perceptions

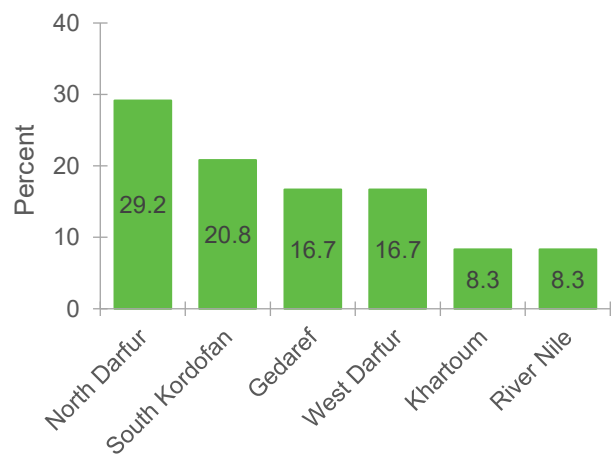
Size of merchants in the market

The figure below shows the distribution of merchants by trading scale and the share facing supply chain challenges (N=130). As shown in the left figure, medium-scale traders constitute the majority (55 percent). Large-scale traders are mainly concentrated in Northern, Blue Nile, and Red Sea states, while medium-scale traders are primarily found in Northern and River Nile states. Small-scale traders are more prevalent in Blue Nile, North Darfur, North Kordofan, and West Kordofan.



Supply Chain and Logistical Challenges Facing Merchants

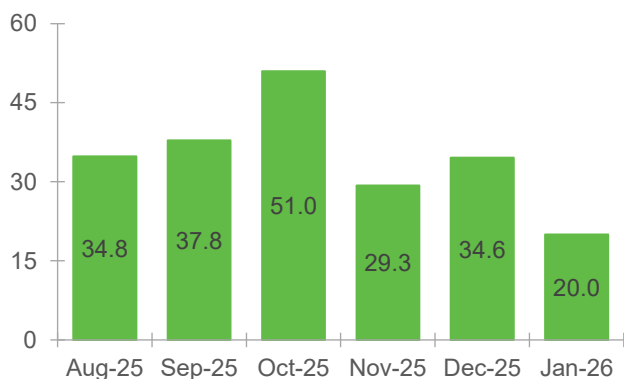
In total, 18.5 percent of merchants reported supply chain and logistical challenges in January 2026. The figure (N=24) below shows that highest shares are recorded in North Darfur (29.2 percent) and South Kordofan (20.8 percent).



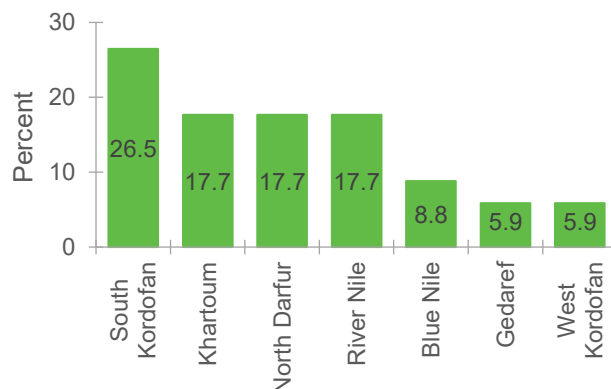
Changes in Demand Conditions

The figure below shows the proportion of merchants reporting supply chain challenges (N=26, Aug 2025 - Jan 2026) which peaked in October 2025 (51 percent) before declining to 20 percent in January 2026. Across states, the largest

changes in demand were reported in South Kordofan and North Darfur, while Northern State recorded the highest share of merchants reporting no change, suggesting relatively stable demand conditions in January 2026.



Nile. Labor-related constraints remain limited, with only 1 percent of merchants reporting difficulties hiring daily labor and 3 percent facing challenges in paying wages.



Financial and Liquidity Constraints

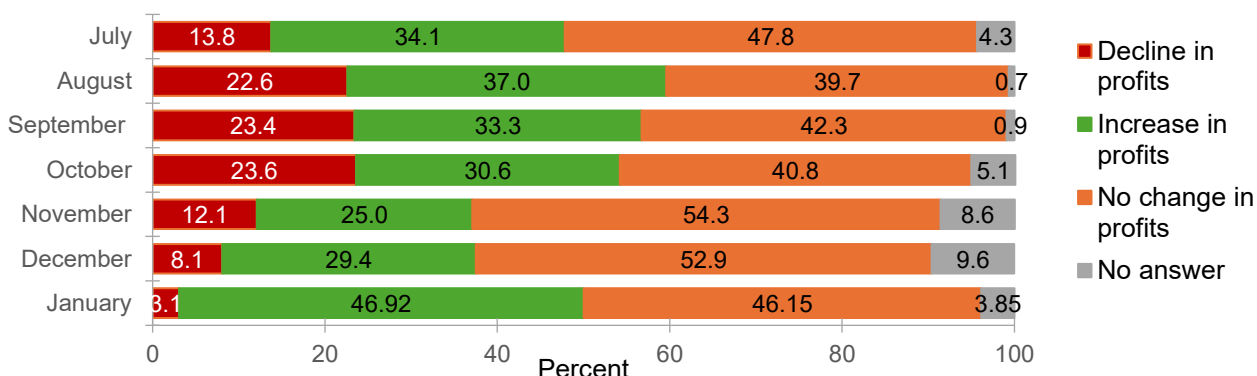
The figure shows the proportion of merchants facing financial challenges and liquidity constraints (N=34) declined from 36.7 percent in December to 26.4 percent in January 2026. The highest shares are reported in South Kordofan, followed by Khartoum, North Darfur, and River

Storage and Power Access

The proportion of merchants reporting no storage constraints declined slightly from 97.8 percent in December to 96.9 percent in January, while storage and power access constraints were reported only in a few locations, mainly in Khartoum and more frequently in North Darfur.

Profits and Profitability Trends

The following figure, depicting the percentage of merchants reporting changes in profits (August 2025–January 2026), shows that the share of merchants reporting increased profit margins rose from 29.4 percent to 46.9 percent in January 2026, with most gains described as modest. The highest shares of merchants reporting profit increases are observed in White Nile, West Kordofan, and South Kordofan, while Northern State records the largest share of merchants reporting stable profit margins. Declines in profit margins were limited and reported only in Al Gezira, Gedaref, Kassala, and North Darfur.

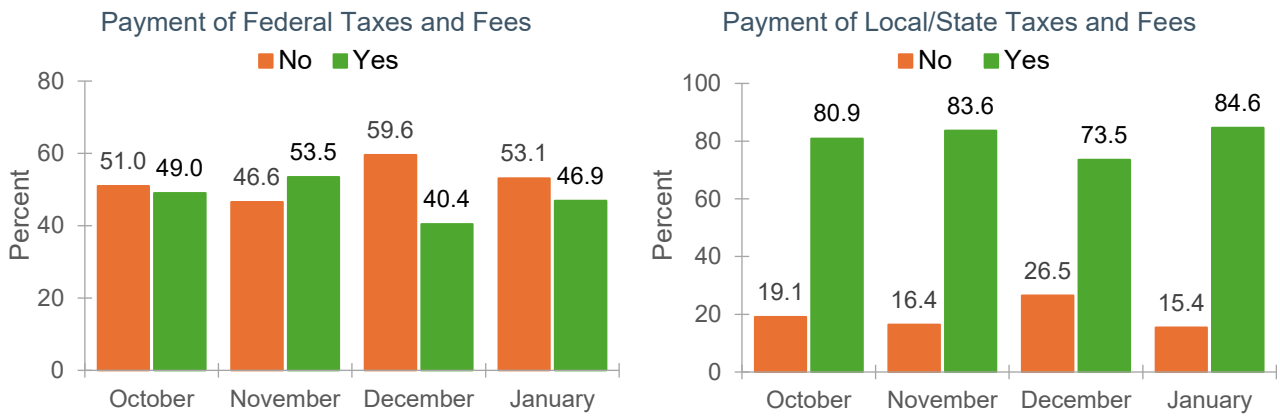


Taxes and Fees

The following figures, depicting the percentage of merchants reporting payments of taxes and government fees (July 2025–January 2026), show that the share of merchants paying federal taxes increased from 40.4 percent in December 2025 to 46.9 percent in January 2026. Most merchants

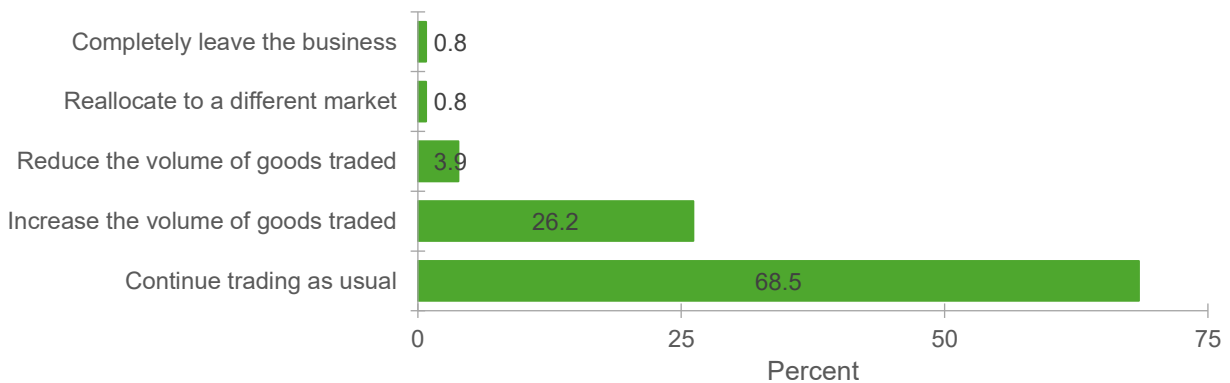
reporting federal tax payments were located in Northern, Blue Nile, River Nile, and North Kordofan states.

The share of merchants paying state and locality-level fees also increased, rising from 73.5 percent in December 2025 to 84.6 percent in January 2026, with most payments reported in Blue Nile and Northern states.



Traders' Future Outlook

The following figure, depicting traders' outlook for the next 1–3 months (from January 2026), shows that 68 percent of surveyed merchants plan to continue trading as usual. Merchants in Blue Nile State account for the highest share intending to increase trading volumes, while merchants in Gedaref comprise the largest share planning to reduce the volume of goods traded.



ABOUT THE AUTHORS

Hala Abushama is a Research Analyst in IFPRI's DSG Unit, based in Cairo, Egypt. **Tarig Rakhy** is a Research Analyst in IFPRI's DSG Unit, based in Doha, Qatar. **Shima Mohamed** is a Research Analyst in IFPRI's DSG Unit, based in Cairo, Egypt. **Halefom Yigzaw Nigus** is a Research Collaborator in the DSG Unit of IFPRI, based in Addis Ababa, Ethiopia. **Khalid Siddig** is Senior Research Fellow in IFPRI's DSG Unit and the Leader of IFPRI's Sudan Strategy Support Program, based in Nairobi, Kenya and an Associate Professor at Khartoum University, Sudan.

ACKNOWLEDGMENTS

This research was supported by the Netherlands Embassy for Sudan and the Food and Agriculture Organization of the United Nations (FAO). This partnership enables the sustained production and use of timely, reliable, and publicly available market data in one of the world's most challenging contexts.



Ministry of Foreign Affairs



Food and Agriculture Organization
of the United Nations

The Sudan Strategy Support Program (SSSP) is managed by the International Food Policy Research Institute (IFPRI). This publication has been prepared as an output of the SSSP and has not been independently peer reviewed. Any opinions expressed here belong to the author(s) and are not necessarily representative of or endorsed by IFPRI.

INTERNATIONAL FOOD POLICY RESEARCH INSTITUTE

A world free of hunger and malnutrition

IFPRI is a CGIAR Research Center

IFPRI Sudan, Arab Organization for Agricultural Development (AOAD), 7th Amarat Street | P.O. Box 474 – 11111 | Khartoum, Sudan

Email: ifpri-sudan@cgiar.org | <https://sudan.ifpri.info/>

© 2026, copyright remains with the author(s). All rights reserved.