

2025
GLOBAL
FOOD POLICY
REPORT

50 YEARS OF
IFPRI
LOOKING TOWARD 2050

FOOD POLICY
LESSONS *and* PRIORITIES
for a CHANGING WORLD

HYBRID GLOBAL
LAUNCH EVENT

MAY 28, 2025

Global Food Policy Report

Overview

Johan Swinnen and Chris Barrett

Director General and SPC Chair
IFPRI

2025
GLOBAL
FOOD POLICY
REPORT

50 YEARS OF
IFPRI
LOOKING TOWARD 2050

FOOD POLICY
LESSONS *and* PRIORITIES
for a CHANGING WORLD

Food policy research and IFPRI's contributions: Past and future

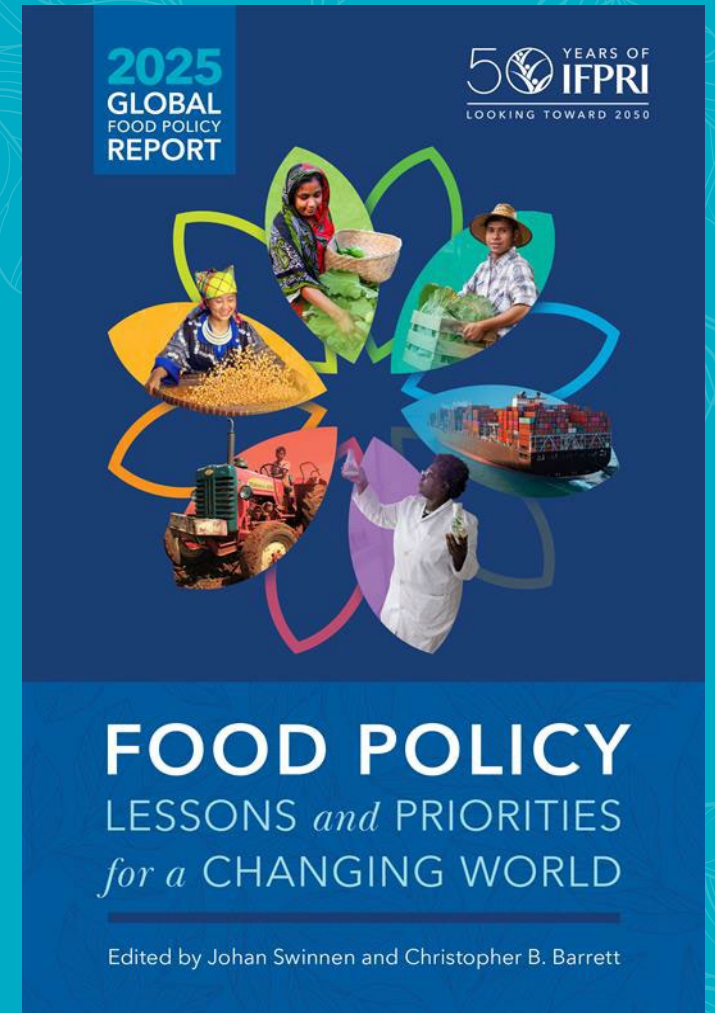


Table of contents

I: Introduction

2. IFPRI's Impact
3. Agrifood Systems

II: Sustainability & Food Systems

4. Climate Change
5. Environmental Sustainability
6. Tenure
7. Food Value Chains

III: Supporting Farmers

8. Agricultural Extension Services
9. Quality Seeds, Improved Varieties
10. Insurance

IV: Transforming Lives & Livelihoods

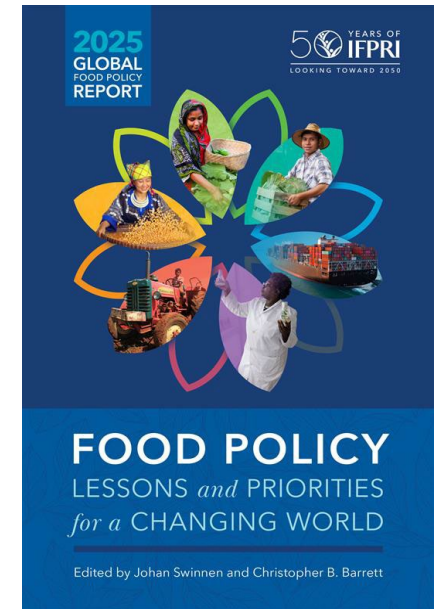
11. Social Protection
12. Nutrition & Diets
13. Fragility & Conflict
14. Gender Research

V: Effecting Change

15. Political Economy & Governance
16. Agrifood Trade
17. Agricultural Innovation Policies
18. Financing

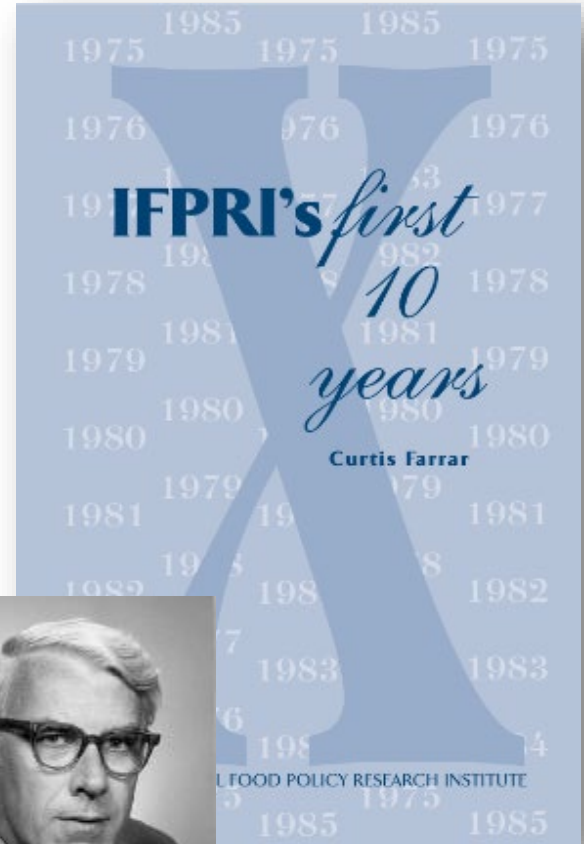
VI: Regional Developments

- 19-24. Africa, Central Asia, South Asia, East & SE Asia, Middle East & North Africa, Latin America



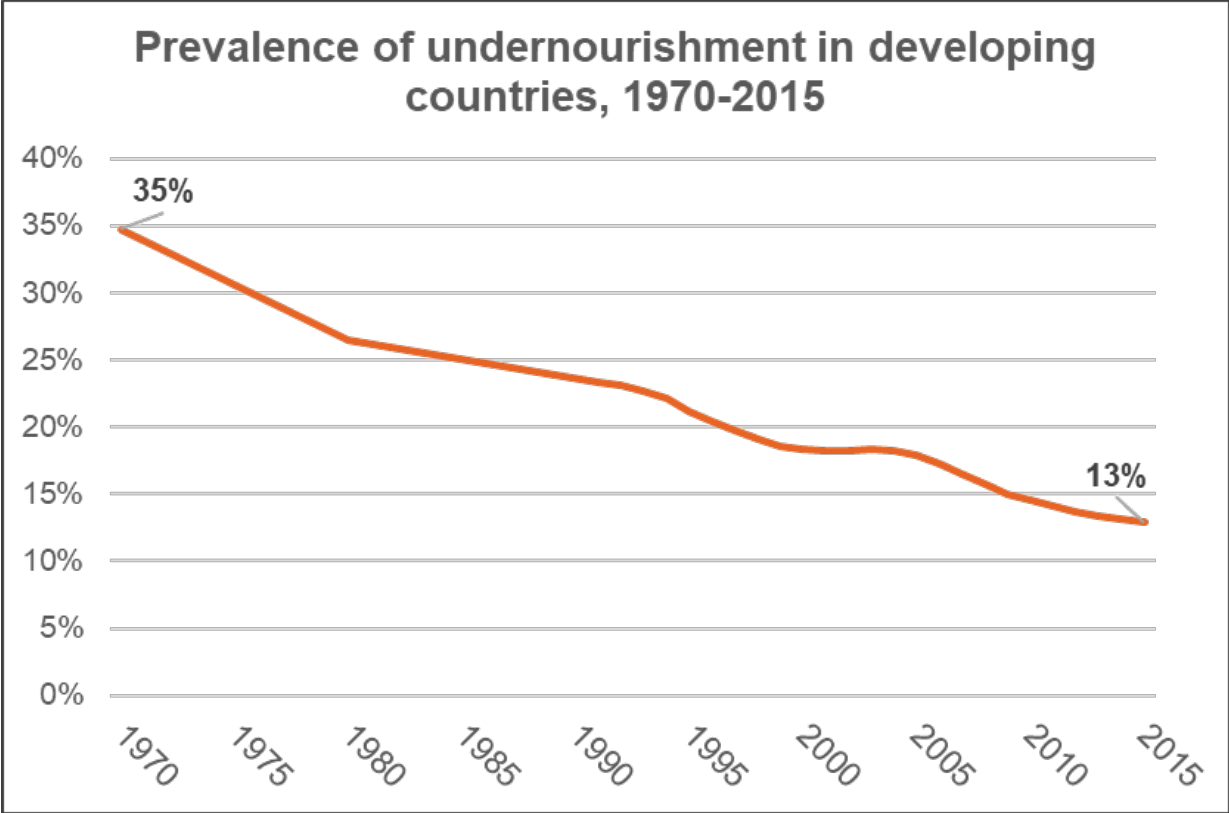
IFPRI 1975: Champions for food policy research

- National governments and international organizations wanted an independent institution to provide data and inform policy decisions related to developing countries.
- In 1975, IFPRI was established with the financial support of the Ford Foundation, the Rockefeller Foundation, and the International Development Research Centre (IDRC) of Canada. USAID became an early supporter.
- Focus on international public goods around four themes: (a) World Food Trends, (b) Agricultural Production, (c) Agricultural Growth Linkages, and (d) Food Subsidies.
- In 1979, IFPRI joined CGIAR.

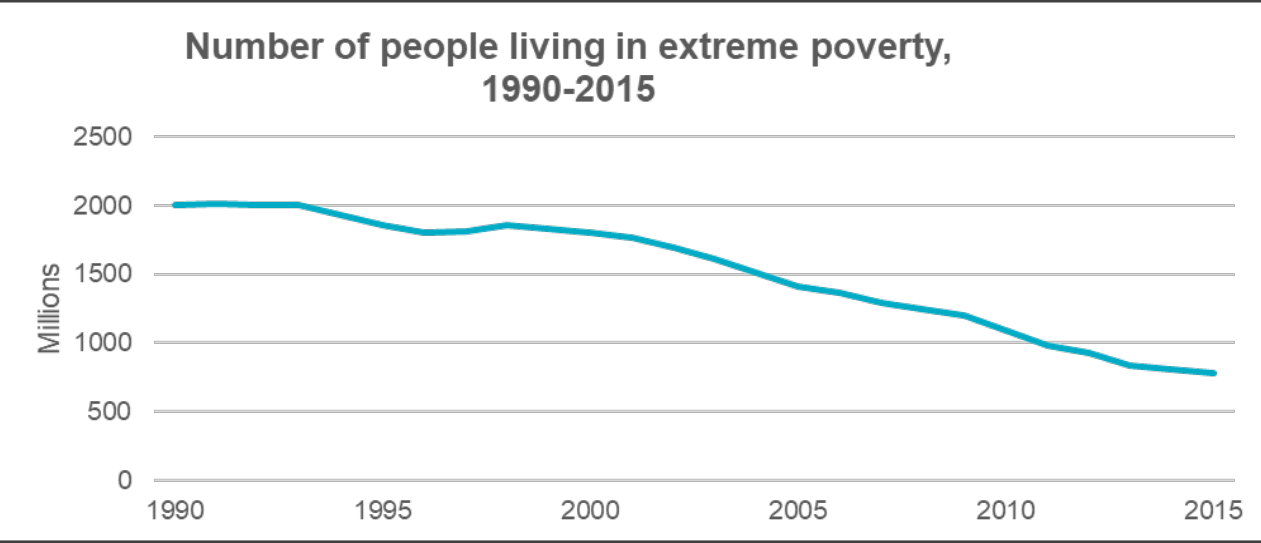
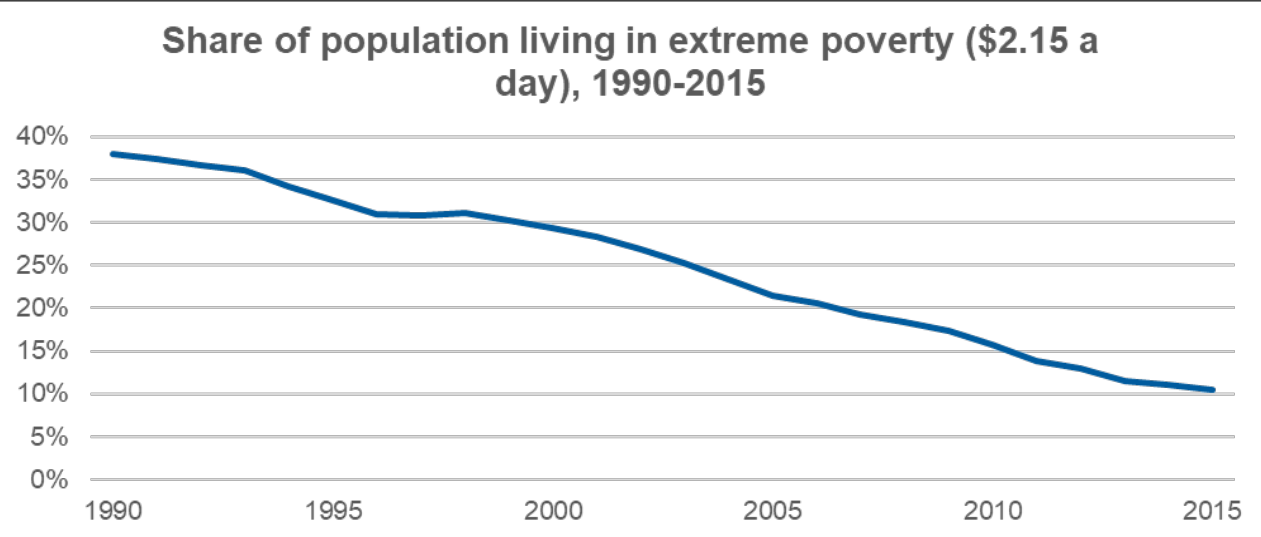


Dale E. Hathaway
Founding Director General

1975-2015: Unprecedented progress in reducing hunger and poverty



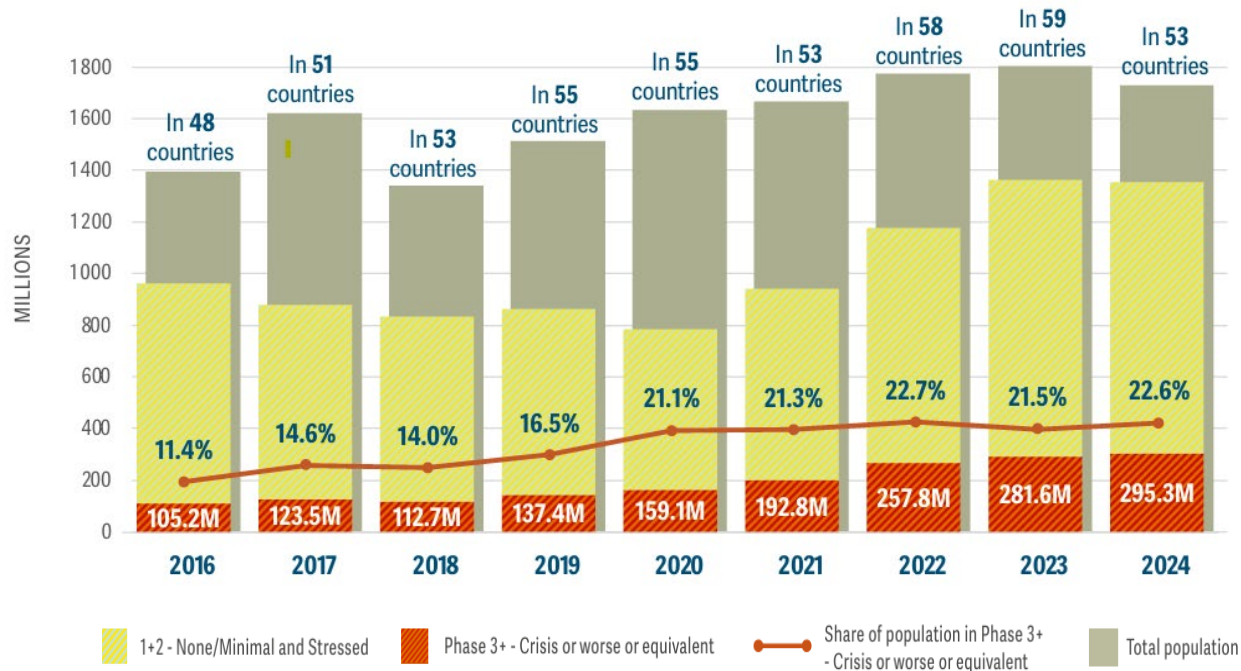
Data: FAO



Data: World Bank Poverty and Inequality Platform

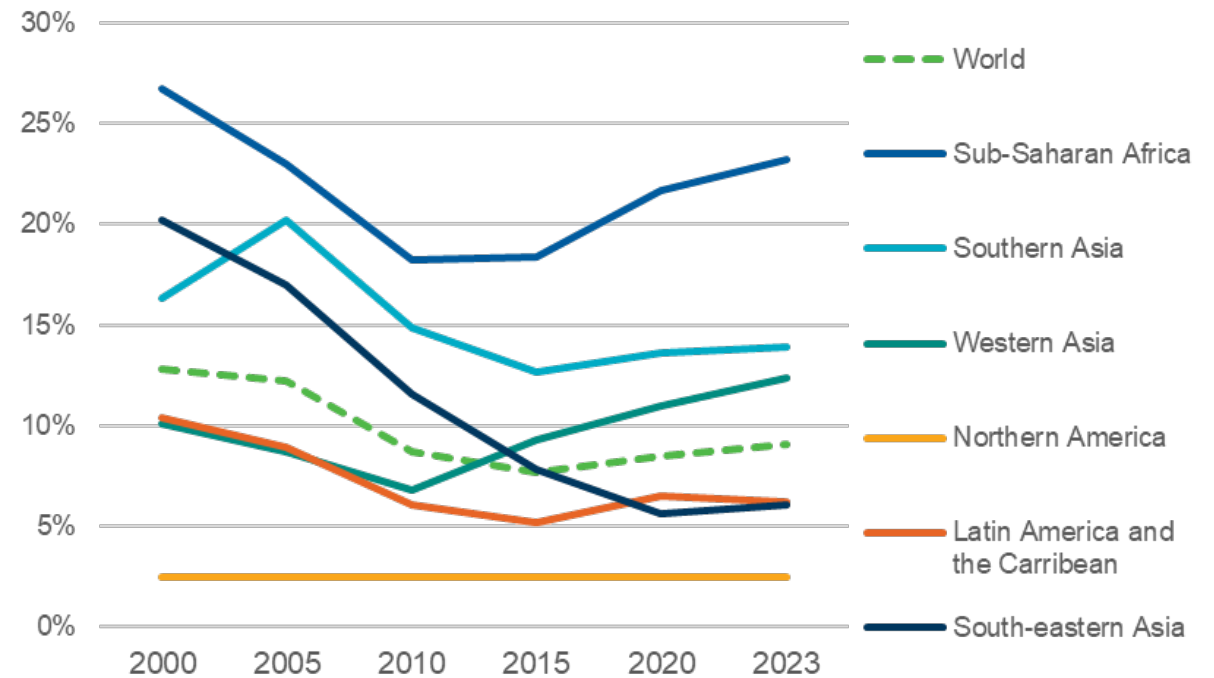
The past decade: Stagnation and reversal in hunger and poverty

Acute food insecurity has almost tripled since 2016



Credit: Global Report on Food Crises 2025

Share of the population that is undernourished by region, 2000-2023 (%)



Data: FAO

Mixed progress on nutrition and health

2 billion

people are affected by **micronutrient deficiencies**

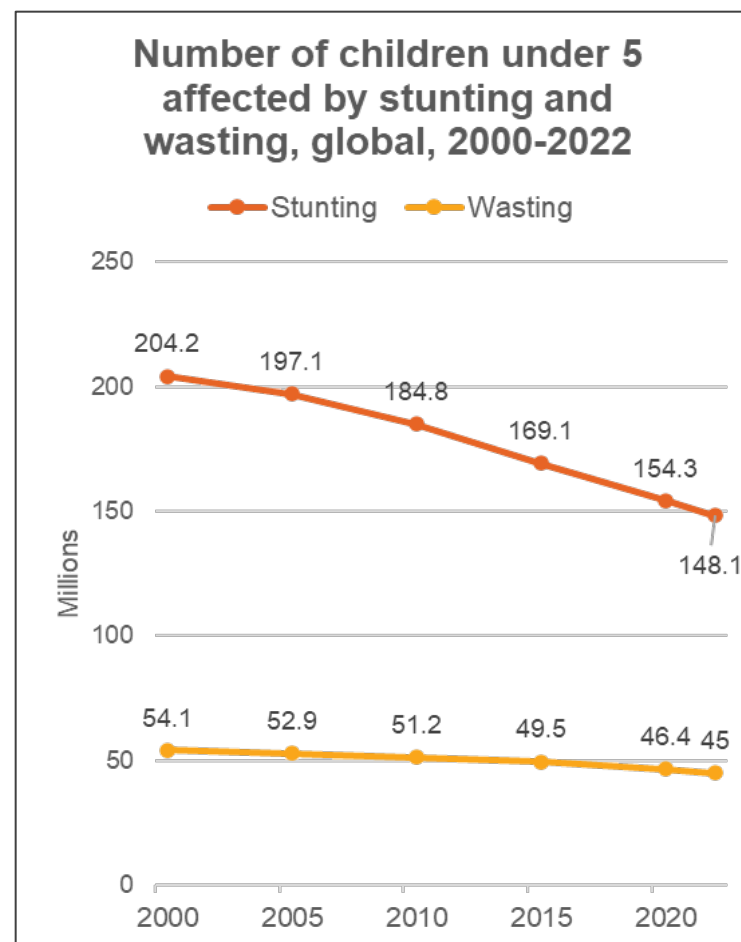
3 billion

people cannot afford a **healthy diet**

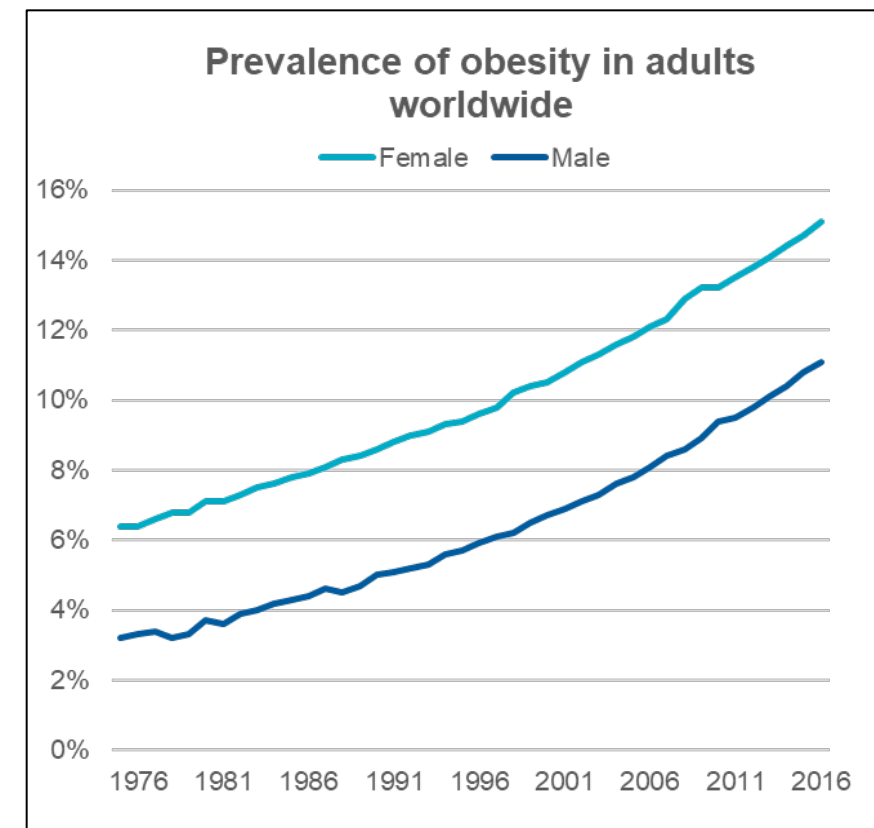
1 in 5



lives could be saved each year by improving diets



Credit: UNICEF, WHO, World Bank Group



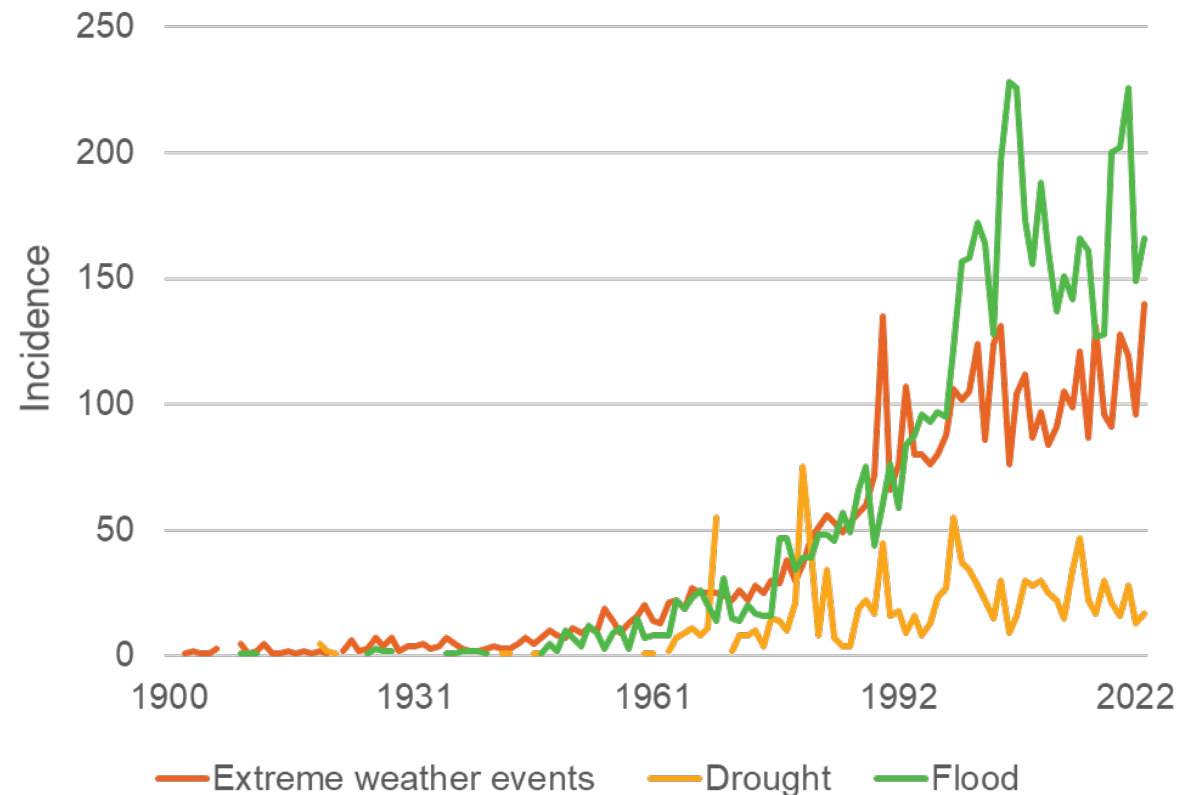
Data: WHO

Externalities and sustainability of food production

Agriculture and the food system

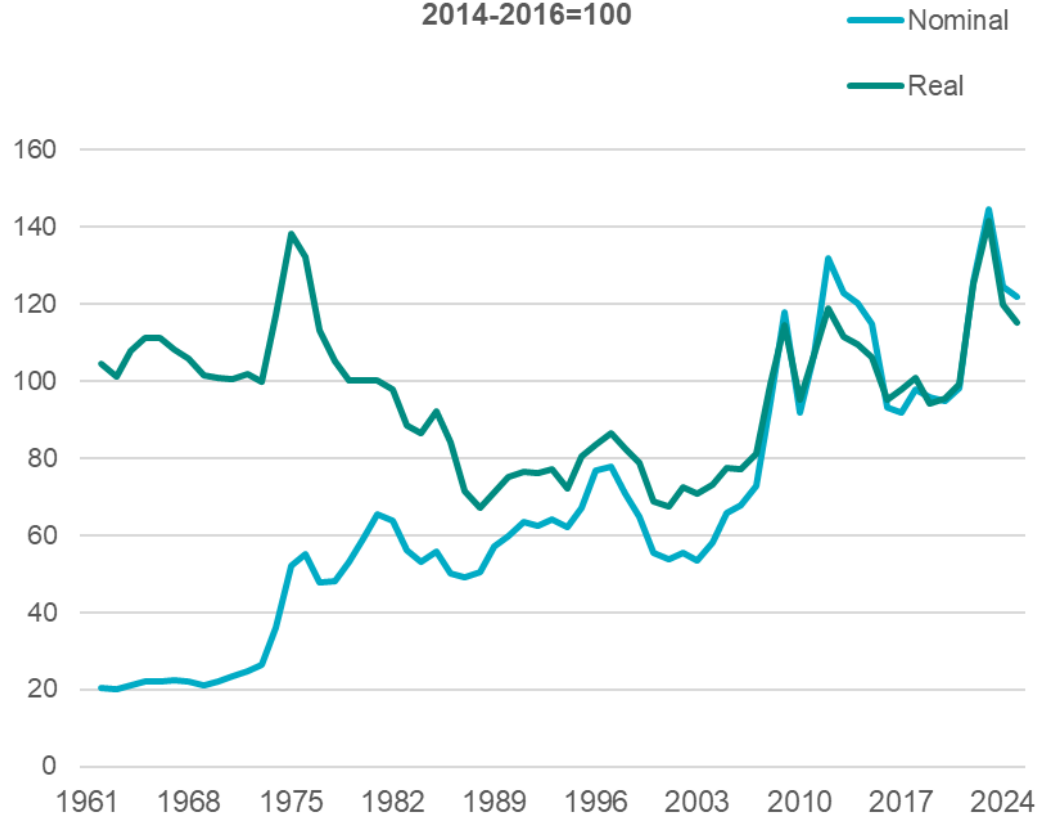
- consume **>30%** of energy
- produce **>20%** of GHG emissions
- use **>70%** of freshwater resources
- major contributor to **biodiversity loss**
- **environmental and health hazards** due to chemical inputs and excess fertilizer

Trends in extreme weather events, droughts, and floods, 1900–2023

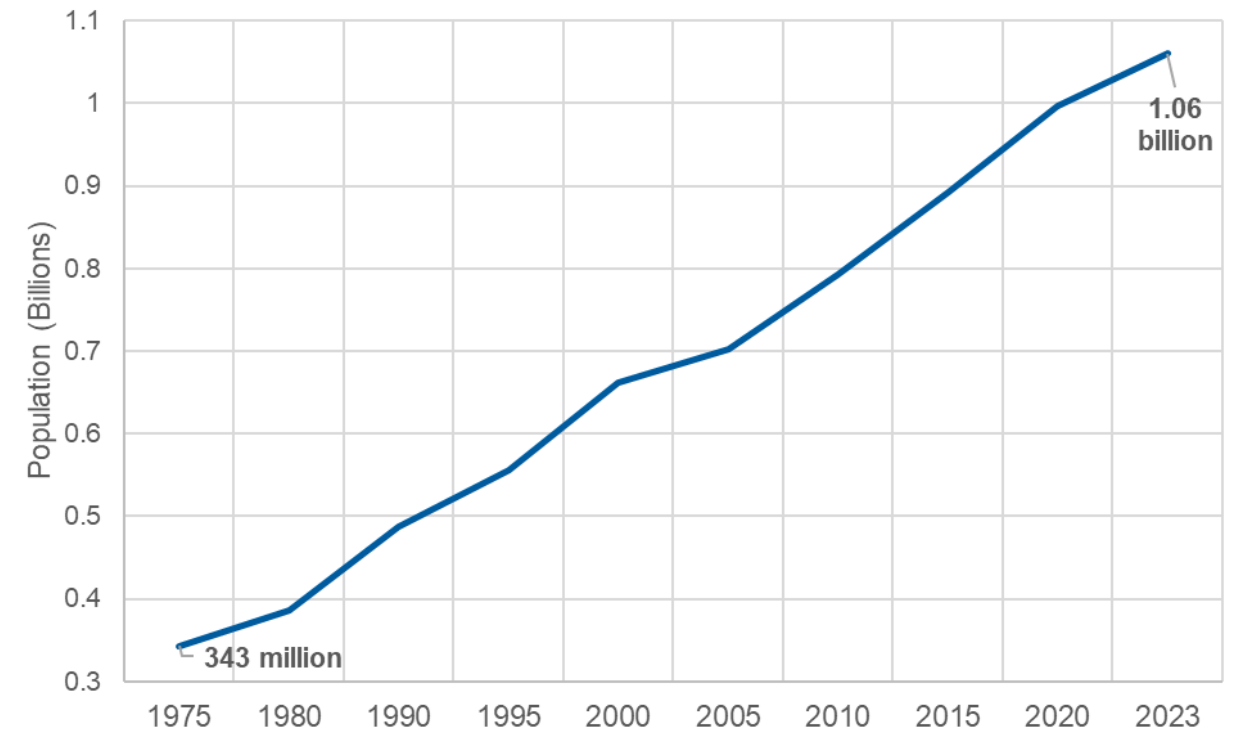


Increased volatility, shocks, and conflict

FAO Food Price Index, 1961-2024
2014-2016=100



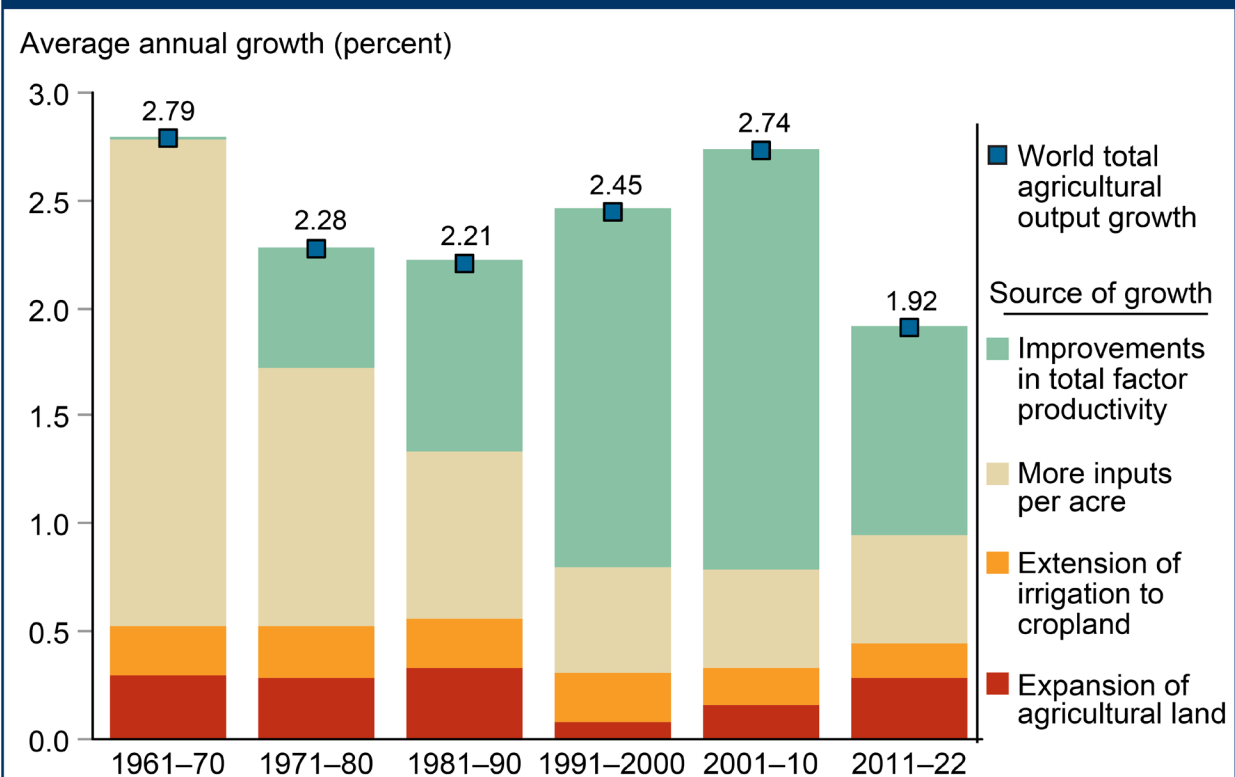
Total population living in fragile and conflict-affected situations, 1975-2023



Data: World Bank

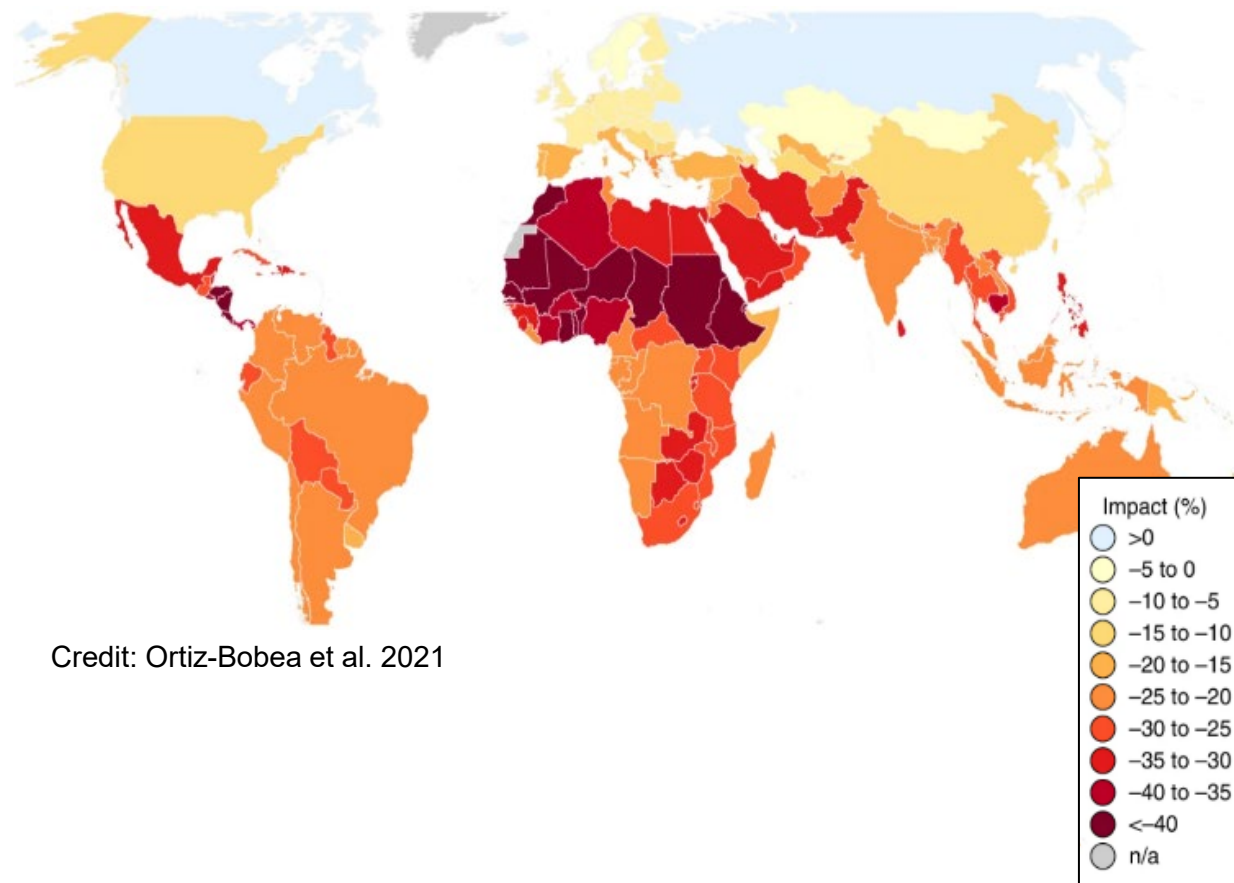
Slowing agricultural productivity growth

Sources of growth in global agricultural output, 1961–2022

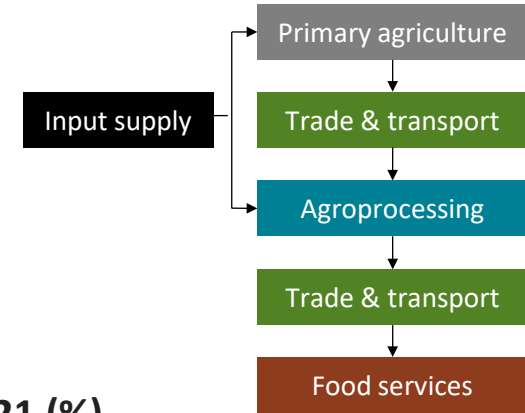


Source: USDA, Economic Research Service, International Agricultural Productivity data product. Data and methods are as of October 2024.

Country-level impacts of climate change on agricultural TFP

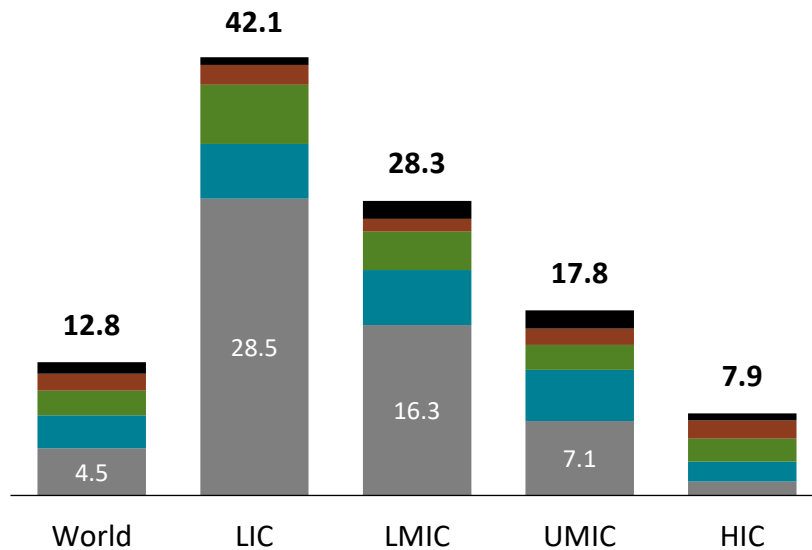


Expanding role of private sector in food systems



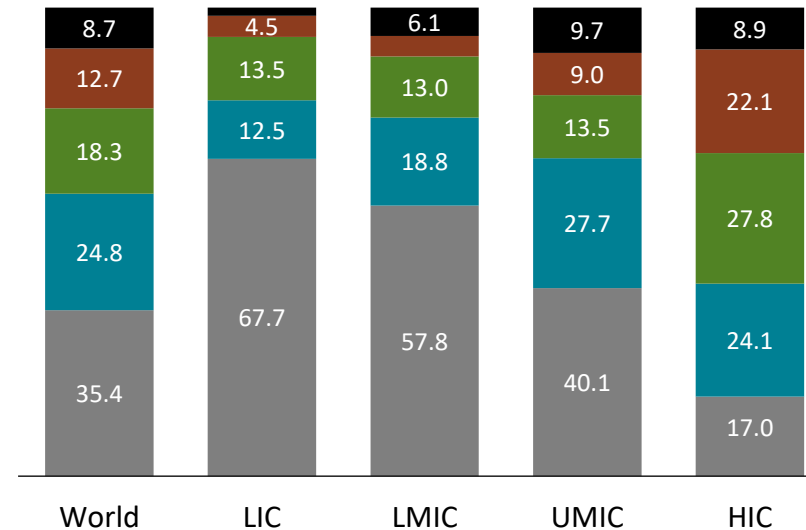
1 Share of total GDP in 2021 (%)

- Agriculture and the agrifood system contribute less to the overall economy in more developed countries



2 Share of agrifood system GDP in 2021 (%)

- Off-farm components are more important parts of the agrifood system in more developed countries

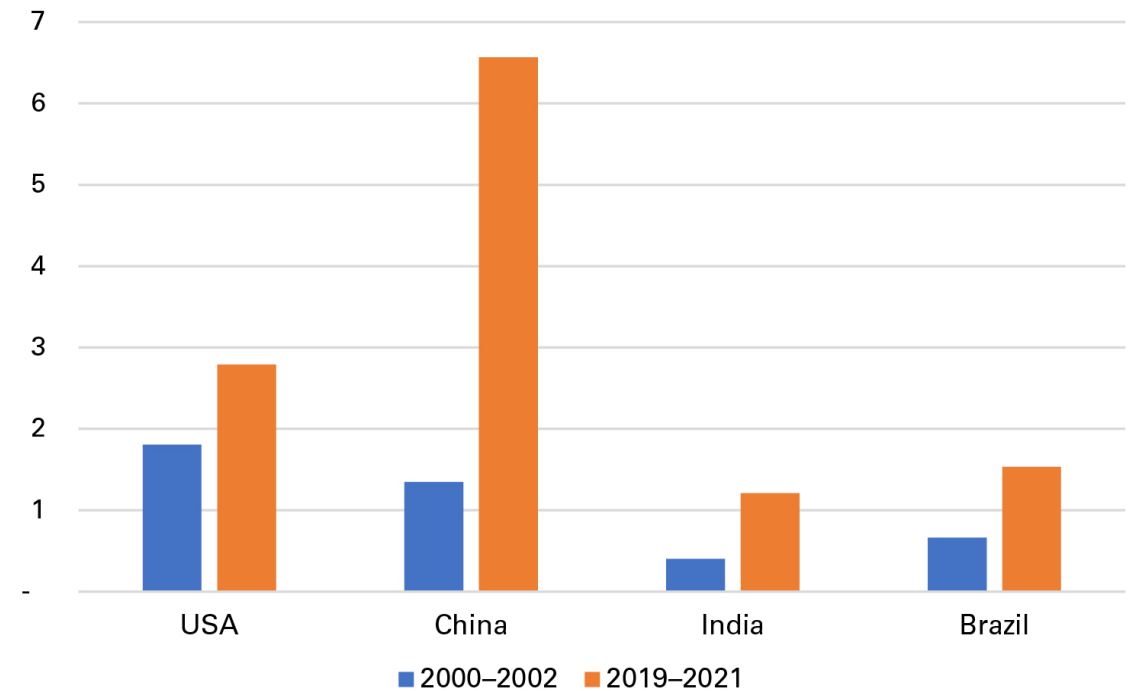


LIC = low-income | LMIC = low-middle | UMIC = upper-middle | HIC = high-income

Shifting financial landscape

- Global shifts in ag and food R&D
 - Growth in MICs
 - Shift to private sector
 - Continued underinvestment in many LMICs
- Global shifts in ODA
 - Significant growth in past
 - Shift from traditional to new funders
 - Uncertain future: fell by 7.1% between 2023 and 2024 and is projected to decline by a further 7.9% in 2025

Spending on agricultural knowledge and innovation systems (US\$ billion), 2000–2002 and 2019–2021.



Data: OECD (2022)

IFPRI has evolved over time

1975

Staff: 40

IFPRI joined CGIAR in 1979

2000s

Staff: 200



Launched in 2003

2025

Staff: >500
Interdisciplinary
60% in country programs

Research focused on international public goods

Greater focus on specific policy issues at national, regional, or global level

Continuous decentralization and focus on capacity sharing

Greater specialization to address fast emerging issues in a rapidly changing world

Research Programs

- World food trends
- Agricultural production
- Agricultural growth linkages
- Food subsidies

- Water resource allocation policies
- Diet quality & diet changes of the poor
- Property rights & collective action
- Pathways from poverty
- Urban challenges to food security
- HIV/AIDS & food & nutrition security
- Large scale interventions to enhance human capital
- Market development
- Genetic resources policy
- Policy processes in food security & nutrition
- WTO, regional trade & globalization
- Priorities for public investment

...and several more

- Development Strategies & Governance
- Foresight & Policy Modeling
- Markets, Trade & Institutions
- Innovation Policy & Scaling
- Natural Resources & Resilience
- Nutrition, Diets & Health
- Poverty, Gender & Inclusion

IFPRI's strengths

- **Dedication to research quality**
- **Independence**
- **Reach**
 - Linking global to local
 - On the ground in fragile areas
- **Partners**
- **Focus on systemic solutions**
- **Communication**

#1 in agricultural economics

#2 in economics of Africa

#5 in development economics



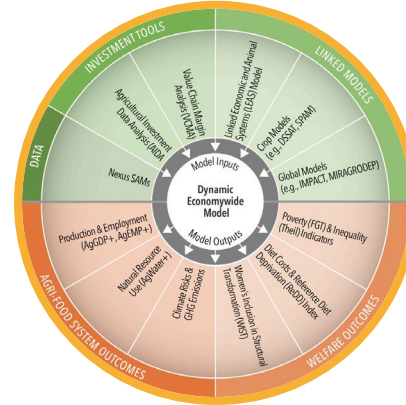
50 years of impact



Gender & development



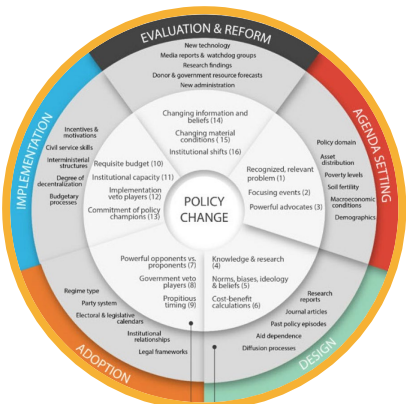
Trade liberalization



Modeling & foresight



Child & maternal nutrition



Political economy analyses



Informing public investments



Evaluating social protection



Capacity building

IFPRI@50: Impact measurement and reporting

- **Impact Assessment Report** covering 50 years of impact
- **IFPRI Making a Difference** brochure and blog series
- **GFPR Impact Chapter**
- **Where are they now?** Exercise: Tracking 1000+ alumni
- **Faces of IFPRI** and **50 Years of Innovation** social media campaigns
- **Testimonials** database



IFPRI's Strategic Approach to impactful research and engagement in a changing financial and knowledge landscape

Clarifying the
situation and
outlook



Testing, adapting,
and scaling diverse
solutions



Shaping enabling
environments



Strengthening
research methods
and building
capacity



Food policy priorities for the future

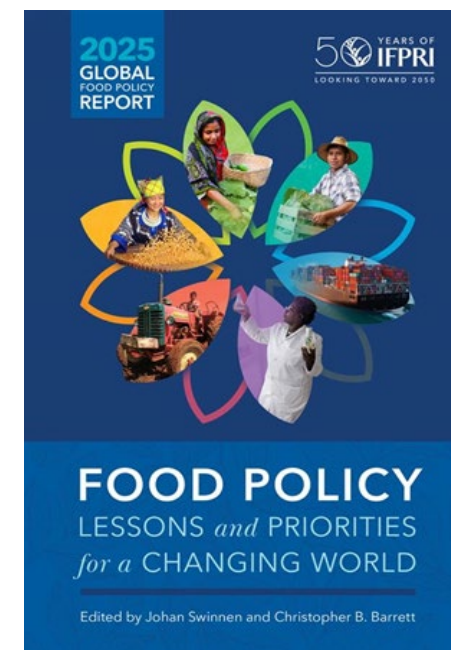
- Focus on resilience and inclusion for vulnerable people and places
- Improve diets, nutrition, and food environments
- Take on the challenge of new technologies
- Engage with the private sector and value chains to meet food systems goals
- Leverage public investments
- Partner and build capacity for interdisciplinary research and policymaking



THANK YOU

to our authors

Sivan Yosef, Tamsin Zandstra, Maria DiGiovanni, Frank Place, Suresh Babu, Xinshen Diao, Margaret McMillan, Karl Pauw, James Thurlow, Mark W. Rosegrant, Elizabeth Bryan, Timothy S. Thomas, Keith Wiebe, Claudia Ringler, Wei Zhang, Ephraim Nkonya, Kris Wyckhuys, Sarobidy Rakotonarivo, Ruth Meinzen-Dick, Isabel Lambrecht, Uchendu Eugene Chigbu, Iliana Monterroso, Diana Suhardiman, Tom Reardon, Bart Minten, Sudha Narayanan, Kristin Davis, Rikin Gandhi, Jawoo Koo, Berber Kramer, Alesha Miller, Jona Repishti, David J. Spielman, Rasheed Sulaiman V., Francisco Ceballos, Peter Hazell, Ruth Hill, Daniel O. Gilligan, Akhter Ahmed, Harold Alderman, Alan de Brauw, Melissa Hidrobo, Kalle Hirvonen, John Hoddinott, Jessica Leight, Shalini Roy, Alemayehu Seyoum Taffesse, Stuart Gillespie, Marie T. Ruel, Jef L. Leroy, Deanna Olney, Anusara Singhkumarwong, Kibrom Abay, Kate Ambler, Jeffrey R. Bloem, Katrina Kosec, Khalid Siddig, Agnes Quisumbing, Hazel Malapit, Jessica Heckert, Bjorn Van Campenhout, Jordan Kyle, Danielle Resnick, Jonathan Mockshell, Eugenio Díaz-Bonilla, Madhur Gautam, Joseph Glauber, Will Martin, Valeria Piñeiro, Sherman Robinson, Fousseini Traoré, Rob Vos, Catherine Ragasa, John Lynam, John Ulimwengu, Steven Were Omamo, Ousmane Badiane, Samuel Benin, Kamiljon Akramov, Isabel Lambrecht, Sharanya Rajiv, Shahidur Rashid, S. Mahendra Dev, P.K. Joshi, Purnima Menon, Kevin Z. Chen, Yunyi Zhou, Ke Kou, Shenggen Fan, Brian McNamara, Joaquín Arias Segura, Sikandra Kurdi, Ganna Hassan, Nina Jovanovic, Linda Steinhuebel-Rasheed



2025
GLOBAL
FOOD POLICY
REPORT

50 YEARS OF
IFPRI
LOOKING TOWARD 2050

FOOD POLICY
LESSONS *and* PRIORITIES
for a CHANGING WORLD

HYBRID GLOBAL
LAUNCH EVENT

MAY 28, 2025

Agrifood System Transformation, Structural Change and Development

James Thurlow

Director, Foresight and Policy Modeling
IFPRI

Asia's Green Revolution

- **Agricultural growth** as a driver of structural change and development
 - Movement of workers from low- to high-productivity sectors
 - Forward linkages to non-agriculture
- **Asia's experience** provided supporting evidence
 - Wide-spread adoption labor-intensive agricultural technologies and practices
 - Rapid technological progress in major staple crops (esp. rice and wheat)
- Emphasis on **supply-side agricultural policies**

Africa's Experience

- **No Green Revolution** after independence
- Recent growth **differs from the Asian model**
 - **Globalization** makes food imports more accessible (esp. processed foods)
 - **Urbanization** raises incomes in cities further removed from agriculture
 - **Diverse diets** means that a focus on a few staple crops is insufficient
- **Should agriculture be de-prioritized?**

Toward Agrifood Systems

- **Broader perspective is imperative**

- Agriculture remains crucial, but cannot be the only focus
- Policies need to go “beyond the farm”

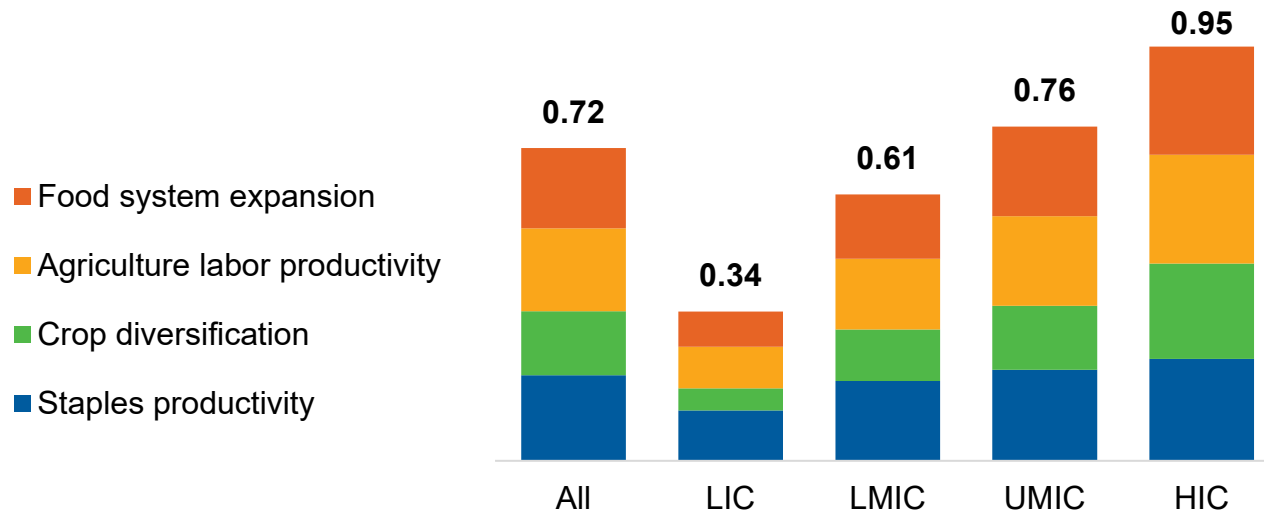
- **Evidence supports this shift**

- Downstream value chain investments can transfer knowledge back to farmers
- Food processing (import substitution) may be a viable path to manufacturing
- Many workers often prefer off-farm employment
- Sustainability and resilience are key concerns

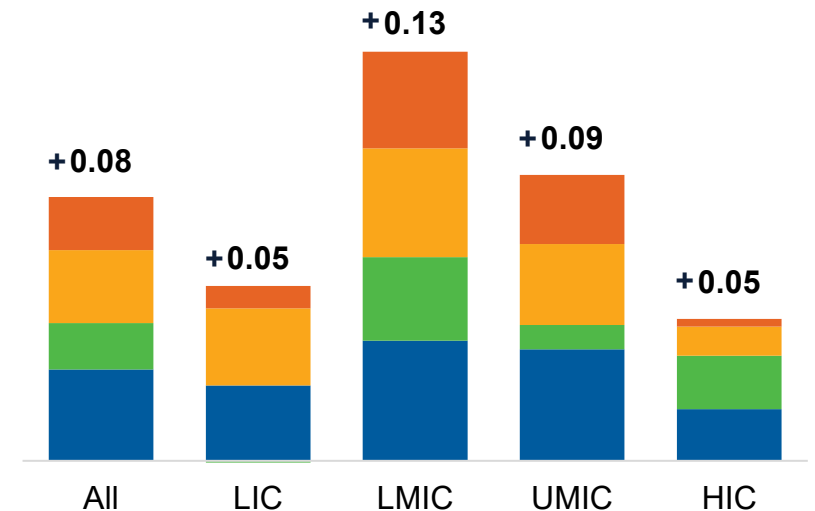
Equipping Ourselves

- We will need **better data and tools**
 - To anticipate emerging challenges and evaluate system-wide policies
 - To track agrifood system transformation

Agricultural Transformation Index, 2021
(1 = country with most transformed agrifood system)



ATI point change, 2000-2021
(bigger is better)



Research Gaps

- **Labor-saving technologies**

- Labor shortages are a reality for agriculture today
- **Research** can identify and adapt these technologies

- **Market incentives**

- Private sector dominates the “downstream” with more diverse actors and incentives
- **Research** can inform how policies shape incentives and ensure equitable outcomes

- **Resilience**

- World market and climate risks are unavoidable
- **Research** can help identify and navigate the most important risks

2025
GLOBAL
FOOD POLICY
REPORT

50 YEARS OF
IFPRI
LOOKING TOWARD 2050

FOOD POLICY
LESSONS *and* PRIORITIES
for a CHANGING WORLD

HYBRID GLOBAL
LAUNCH EVENT

MAY 28, 2025

Agrifood trade

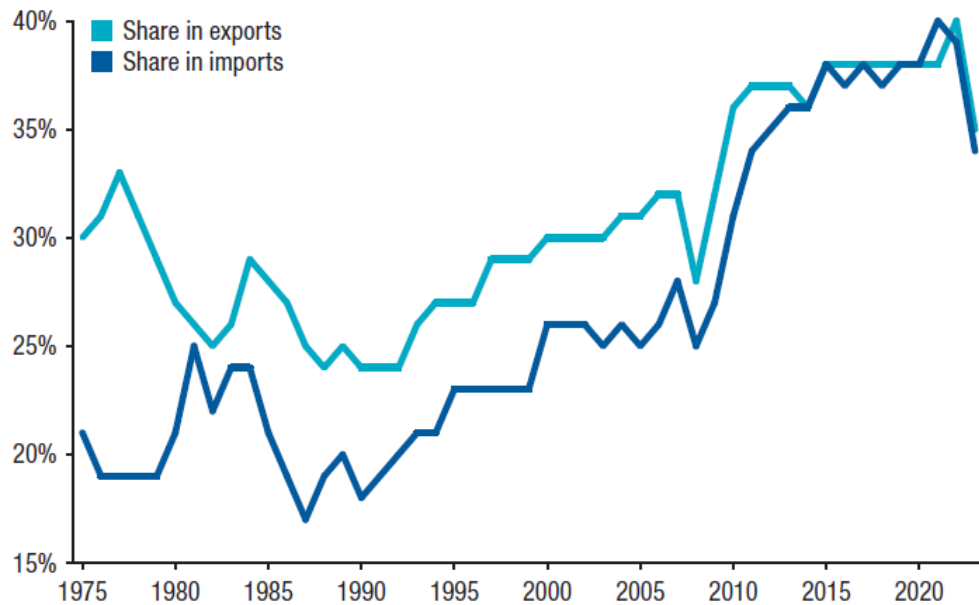
Changing perspectives and challenges

Ruth Hill

Director, Markets, Trade and Institutions Unit
International Food Policy Research Institute

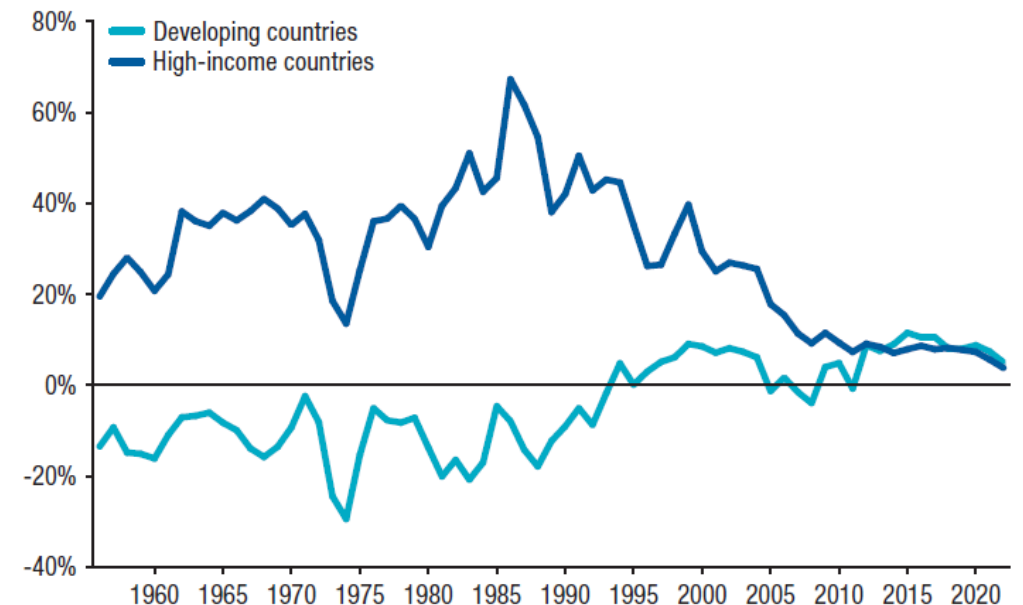
Developing country agrifood trade has increased substantially, aided by policy reform

Developing countries are now larger suppliers and markets for agrifood trade



Source: Authors' calculations based on Comtrade data. <https://comtradeplus.un.org/>

Domestic policies have become less trade distorting in high income and developing countries



Source: AgIncentives Consortium database. www.agincentives.org

Note: Rates refer to the nominal rate of protection (NRP), as defined in footnote 2 to this chapter.

Three main contributions of IFPRI's work

1. Measuring and analyzing trends

- Measuring protection, member of Agincentives consortium
- Innovations in measuring cross-border informal trade, predicting global food price volatility (daily for over a decade), food loss and waste, value chain costs, efficiencies and financing
- Monitoring global price changes and impacts on economies and people: member of AMIS consortium, broad outreach through blogs and press coverage.

2. Modeling medium-term impacts of global trends and policy reforms

- Country and global models, modeling capacity sharing, esp. in Africa, development of MIRAGRODEP
- Model impacts of trade agreements, trade restrictions and trade wars, impacts of shocks, food vs (bio)fuel
- Analyze approaches to repurposing agricultural support (provided evidence that contributed to 159 countries signing the Declaration on Sustainable Agriculture, Resilient Food Systems and Climate Action at COP28)

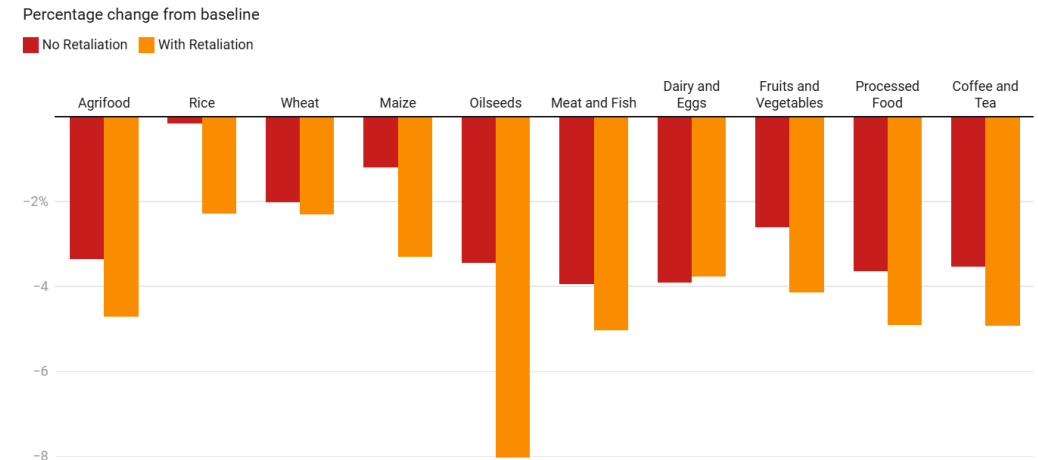
Three main contributions of IFPRI's work

3. Understanding domestic markets and testing innovations to connect more farmers to trade opportunities
 - Showing how domestic food markets in lower-income countries have been reshaped by liberalization, urbanization and changing patterns of food consumption. And the role of spontaneous clusters, supermarkets, dynamic MSMEs.
 - Challenging some prevailing perceptions, e.g. showing that traders are often competitive, that the welfare impacts of concentration are complex, that vertical integration can benefit farmers.
 - Testing approaches to increasing efficiency and farmer access to markets, for example:
 - Improving effectiveness of farmers groups and cooperatives
 - Testing and certifying quality in local markets
 - Food safety information, incentives and technology

Still a long way to go

- Sustainable agricultural production will involve producing food in the right places as weather patterns change, and trading efficiently and effectively to achieve national food security.
- This requires a stable trading environment and low barriers to trade.
- Reality:
 - A proliferation of export bans when local food production falls.
 - Barriers to trade are higher in the agricultural sector than any other sector.
 - Recent trade policies increase instability and costs of trade (resulting in reduce trade)
 - Transport and logistics cost of trade is often too high, particularly in Africa.

Higher tariffs cause global agrifood trade to contract: Impact of tariffs announced on April 2 on global exports



Impacts of tariffs on SSA exports, selected products

Percentage change from baseline

	China 125% / SSA 10%	China 125% / SSA no tariffs	Liberation Day	Mexico/Canada 25%
Agrifood	0.1%	1.2%	0.6%	0.7%
Fruits and Vegetables	-0.5%	-0.2%	0.1%	1.0%
Processed Food	-0.3%	0.6%	-0.1%	0.9%
Coffee and Tea	-1.2%	1.5%	-2.1%	0.5%
Meat and Fish	0.2%	0.3%	0.8%	0.9%

Source: Calculations by authors based on MIRAGRODEP simulations. • [Get the data](#) • [Download image](#)

Sources: Glauber, Piñeiro and Gianatiempo (2025), Piñeiro, Gianatiempo, Traoré and Glauber (2025)

Future directions

- Continuing to make the case for trade as an essential part of achieving food security
 - Increased openness, efficiency in domestic markets, policy stability
- Better understanding the costs of transition and welfare impacts of trade reforms and price changes
 - Requires understanding and modeling frictions and uncertainty
- Co-designing and testing innovations to overcome barriers smallholder farmers face engaging in export markets, especially on meeting new sustainability and quality standards



2025
GLOBAL
FOOD POLICY
REPORT

50 YEARS OF
IFPRI
LOOKING TOWARD 2050

FOOD POLICY
LESSONS *and* PRIORITIES
for a CHANGING WORLD

HYBRID GLOBAL
LAUNCH EVENT

MAY 28, 2025

From global to regional and national: How policy research can shape the future of nations

Steven Were Omamo

Director of Development Strategies and Governance and Director for Africa
IFPRI

2025
GLOBAL
FOOD POLICY
REPORT

50 YEARS OF
IFPRI
LOOKING TOWARD 2050

FOOD POLICY
LESSONS *and* PRIORITIES
for a CHANGING WORLD

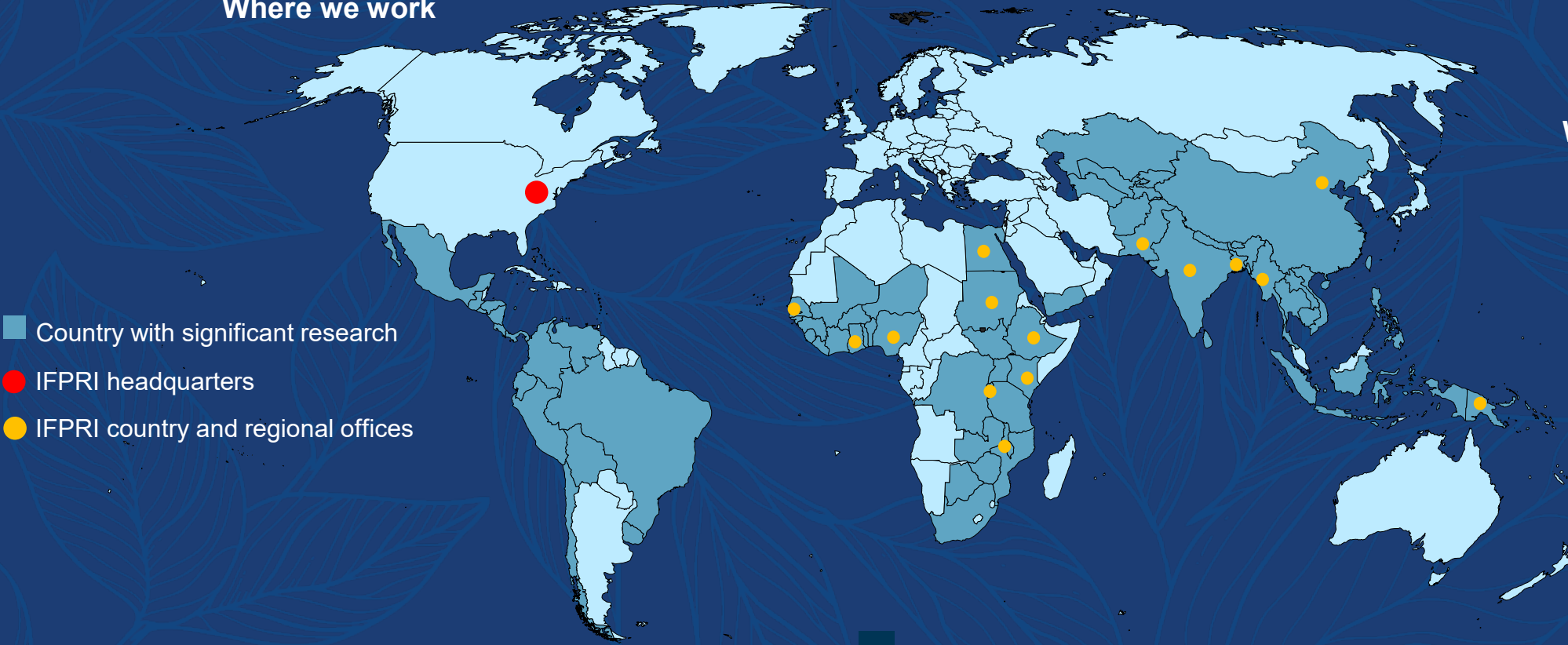
Policy research, rooted in evidence, drives national strategies, strengthens food systems, and builds resilience amid global shocks and complexity

Robust evidence has supported national decisions on agriculture, food, and investment worldwide

Region	What Evidence Enabled	Key Examples
Africa	Insights on markets, poverty, vulnerability, and nutrition	Reforms in pricing, safety nets, and nutrition policies in many countries
Central Asia	Shift from central planning to market-based approaches	Land and price reforms in Kazakhstan, Kyrgyzstan
East & SE Asia	Climate- and nutrition-sensitive strategies	Subsidy reforms and resilience financing in Indonesia and Viet Nam
LAC	Responses to the double burden of malnutrition	Dietary policy shifts in Brazil and Mexico
MENA	Real-time shock management	Food and water price modeling in Egypt and Morocco
South Asia	Green Revolution and subsidy reforms	Infrastructure and safety net design in Bangladesh and India

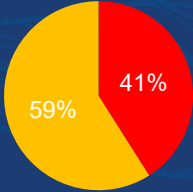
With most staff based in country and regional offices, IFPRI builds long-term partnerships that respond to national and regional priorities and needs

Where we work



- Country with significant research
- IFPRI headquarters
- IFPRI country and regional offices

Where our staff are located



IFPRI embeds research in national policy through sustained partnerships to co-create evidence-based solutions

Region	Examples of Engagement	Key Contributions
Africa	Support for CAADP, ministries, and technical programs	>30 investment plans, CAADP BR process, safety net programs
Central Asia	Technical training and advisory relationships	Policy networks, land tenure and price reforms
East & SE Asia	Research-policy platforms with ministries and regional bodies	Pro-poor technology development and subsidy reforms in Indonesia, Thailand, Viet Nam
LAC	Collaboration on trade, nutrition, social protection	Integrated trade and nutrition objectives in Peru, Colombia, Brazil
MENA	Crisis response and policy modeling and simulation	Cash-based transfer analyses in Egypt, Morocco, Sudan
South Asia	Embedded partnerships for subsidy reform, safety nets, nutrition	Reforms of subsidies, nutrition BCC, and school meals in India and Bangladesh

IFPRI's research has yielded significant impacts at country and regional levels across the policy research continuum

Region	Examples of Impacts
Africa	Nigeria: Fadama III rural poverty alleviation program scaled to 5.9M people following an IFPRI evaluation
Central Asia	Tajikistan: Joined the Global Methane Pledge after IFPRI technical and capacity development support
East & SE Asia	China: Agricultural R&D scaled up based on IFPRI recommendation, lifting 6M from poverty
LAC	Brazil: Design of 55M-beneficiary Bolsa Família CCT program informed by IFPRI analysis
MENA	Egypt: Cash transfers expanded to 17M people based on IFPRI evaluation
South Asia	India: Rural roads program designed using IFPRI evidence lifted 18M from poverty based on IFPRI evidence

Three cross-cutting lessons emerge on achieving policy impact through research

- **Policy evolution is nonlinear** – Reforms advance through cycles of learning, crisis, and adaptation
- **Policy is political** – Evidence matters most when it is embedded in trusted relationships and tailored to decision cycles
- **Institutions matter** – Lasting impact depends not just on policies, but on strong institutions to generate, use, and govern evidence

National food systems depend on aligning global evidence, regional collaboration, and local ownership

Priorities Going Forward

1. **Strengthen national capacity** for data, modeling, and foresight
2. **Use regional platforms** (e.g., CAADP, ASEAN, IICA) to bridge global evidence and local realities
3. **Mobilize partnerships** to scale sustainable, equitable solutions in fragile and food-insecure contexts

2025
GLOBAL
FOOD POLICY
REPORT

50 YEARS OF
IFPRI
LOOKING TOWARD 2050

FOOD POLICY
LESSONS *and* PRIORITIES
for a CHANGING WORLD

HYBRID GLOBAL
LAUNCH EVENT

MAY 28, 2025

Informing policy to tackle poverty and gender inequities

Social Protection

Shalini Roy

Senior Research Fellow, Poverty, Gender, and Inclusion Unit
IFPRI

On behalf of Daniel O. Gilligan, Akhter Ahmed, Harold Alderman, Alan de Brauw, Melissa Hidrobo, Kalle Hirvonen, John Hoddinott, Jessica Leight, Shalini Roy, Alemayehu Seyoum Taffesse

Why does social protection matter?

Reduces poverty and food insecurity

“We could eat three times a day. We were at peace.”

Builds resilience amid crises

“[After a cyclone], getting that food benefited us. We didn't have to starve. We could eat pulses and rice.”

Promotes building assets and livelihoods

“I put together the cash I received from the project to buy a cow and a goat. Through the impact of the project, our livelihood and income has improved.”

Supports women's decision-making

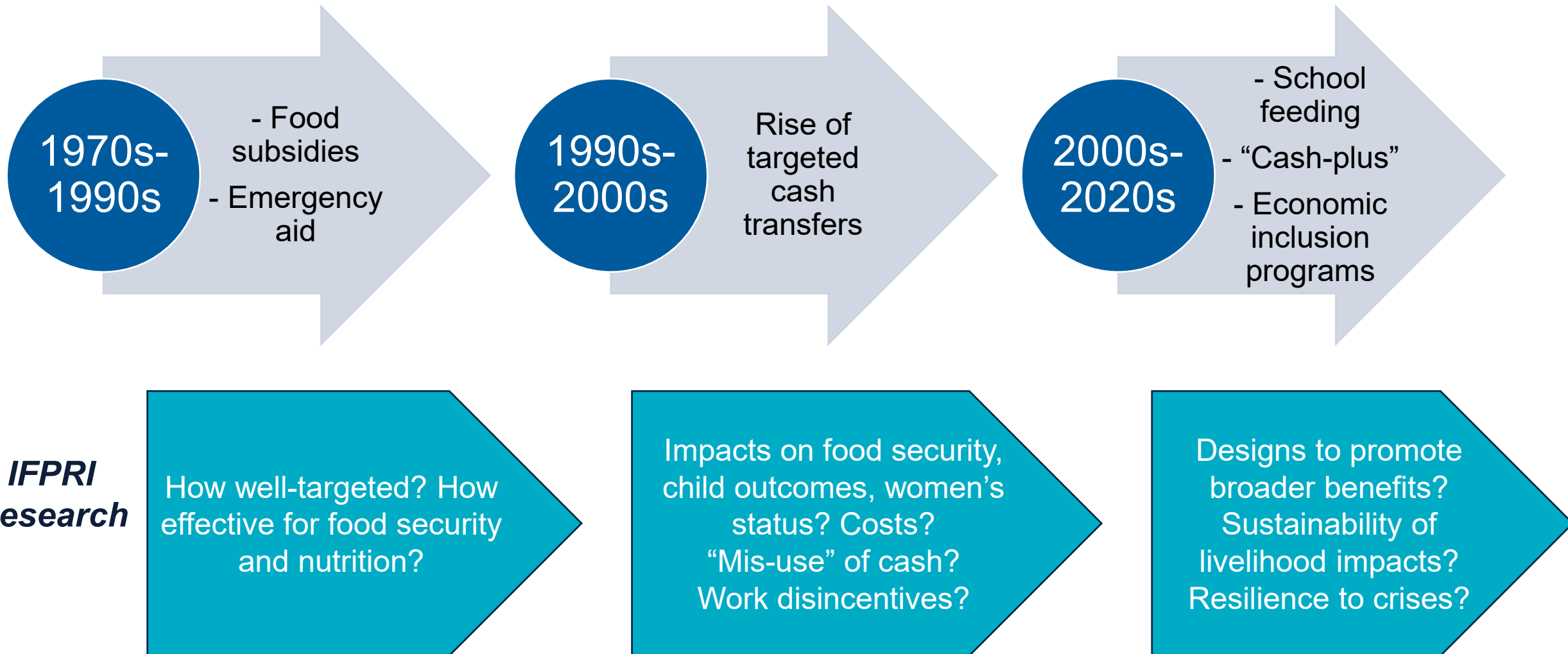
“He never listened to me before. He would do whatever he wanted to. But when I started getting the money, he started taking my opinions into account.”

IFPRI research informs testing, adapting, scaling social protection around the world

- IFPRI's social protection research with partners across 22 countries has shown which designs are effective to achieve diverse policy objectives.
- Has informed adaptation and scaling across many more countries.
- Social protection now reaches over 1 billion people in LMICs.



IFPRI's social protection research responds to *and* guides the evolution of global social protection policy



Example of evidence to policy from Bangladesh

- Randomized controlled trial with WFP Bangladesh, 2012-2014: monthly cash or food transfers to poor rural mothers, with or without group-based nutrition training.
- **Cash+Training** had transformative effects for households, women, and children.
 - ↑ **child diets and nutritional status** (large reductions in stunting)
 - ↑ **women's livelihoods** (livestock rearing, homestead gardening)
 - **Sustained ↓ in household poverty** 4 years post-program
 - **Sustained ↑ resilience** in food security during COVID-19
 - **Sustained ↓ in intimate partner violence** 8 years post-program
- Informed scaling of nutrition- and gender-sensitive social protection implemented by Government of Bangladesh and many other countries.



Photo: Aminul Khandaker, IFPRI-Dhaka

Priorities for social protection research

- Adaptive systems to support those most at risk amid crises
 - Examples: Anticipatory cash linked to early warning of flood risk in Nigeria; economic inclusion programs during drought in Ethiopia and conflict in Somalia.
- Cost-effective designs that promote sustained, multifaceted benefits
 - Which uses of funds deliver broad lasting solutions?



Photo credit: Martchan/Shutterstock

2025
GLOBAL
FOOD POLICY
REPORT

50 YEARS OF
IFPRI
LOOKING TOWARD 2050

FOOD POLICY
LESSONS *and* PRIORITIES
for a CHANGING WORLD

HYBRID GLOBAL
LAUNCH EVENT

MAY 28, 2025

Gender Research

Metrics and Policies for Greater Equity and Inclusion

Agnes Quisumbing

Senior Research Fellow, Poverty, Gender, and Inclusion Unit
IFPRI

Ruth Meinzen-Dick, Hazel Malapit, Jessica Heckert, Berber Kramer, and Bjorn Van Campenhout

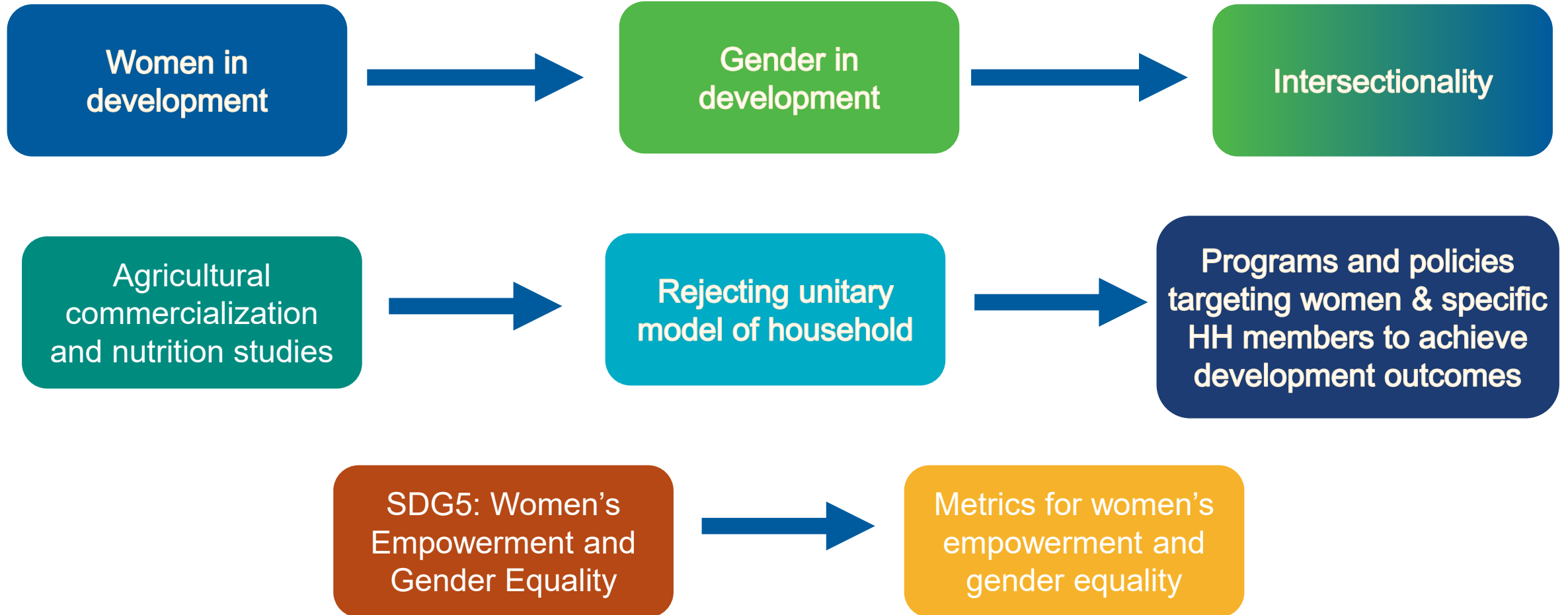
Why gender research matters?

- Women's empowerment is both a **development goal** and a **means** to improve poverty, health, education, and nutrition outcomes.
- Gender inequities are structural, intersectional, and need explicit attention in policies and programs



*Women produce 1/2 the world's food
but have much less access to land*

Evolving gender frameworks, research, policy, and practice

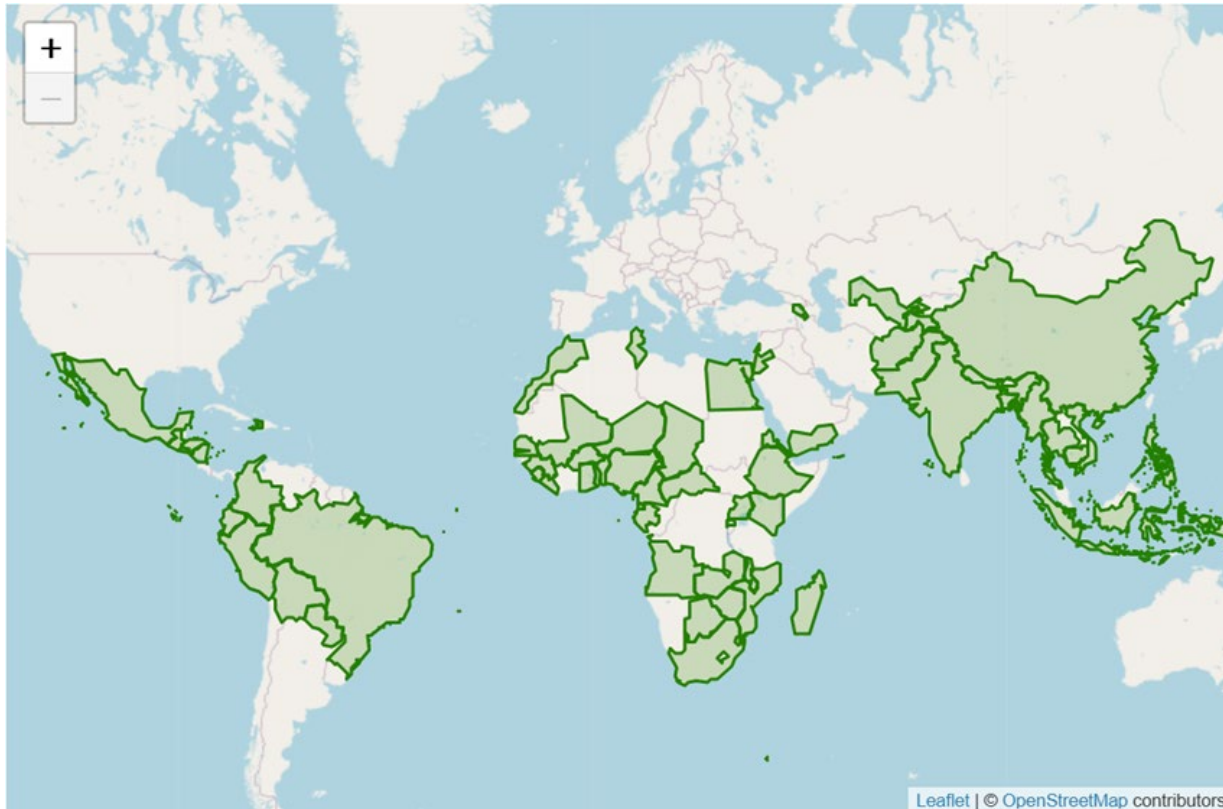


Understanding gender & household dynamics helps design and implement better development programs

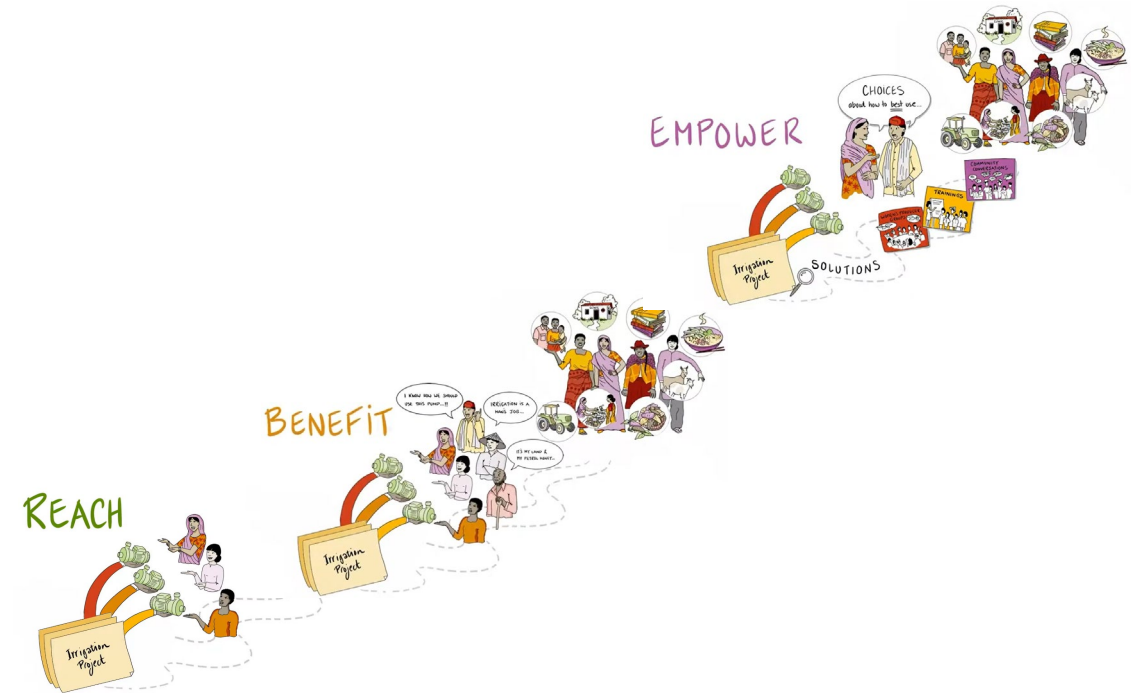
- Household separate & joint decisions → use, control, ownership of assets matters; transfer programs pay attention to who receives
- Role of women and gender in agriculture → design of gender- and nutrition-sensitive agriculture programs
- Gendered vulnerabilities to adverse weather events and other shocks → gender in adaptation, social protection, humanitarian assistance



Development of better metrics helps design gender-transformative programs and policies



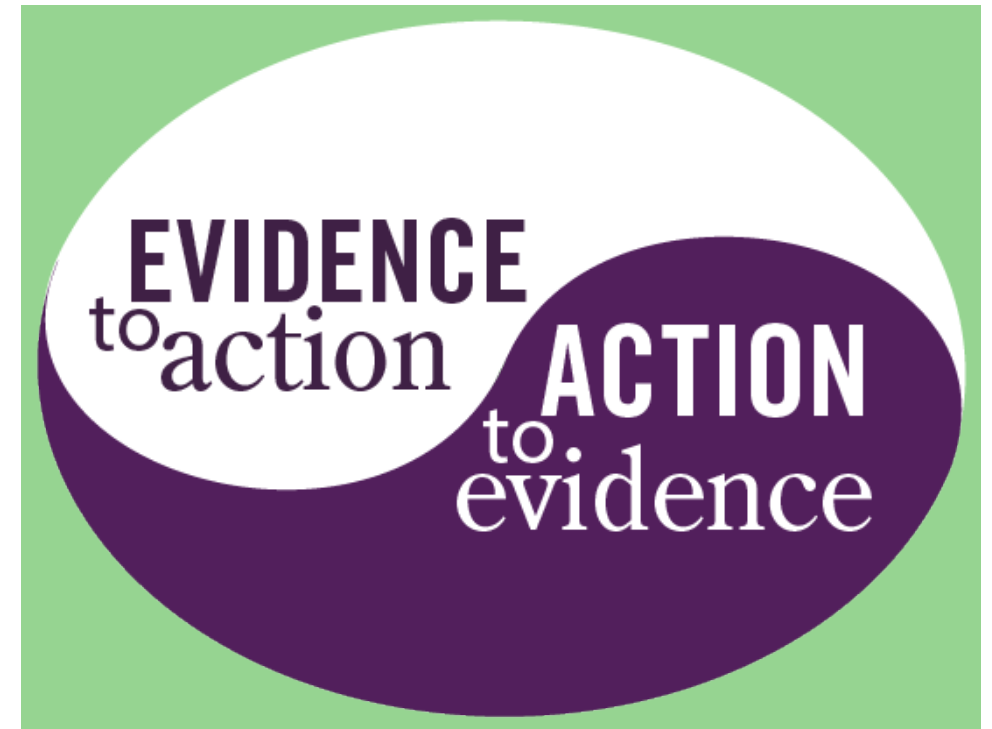
Women's Empowerment in Agriculture Index (WEAI): 280 organizations in 69 countries



Reach, Benefit, Empower, Transform framework: a guide for women's empowerment and gender transformative interventions, used by 13 donor organizations

Future directions

- Embrace **intersectionality** (caste, class, ethnicity) even more
- Address **lifecycle needs** (youth, elderly, caregiving responsibilities)
 - Youth as a window of opportunity, not a problem or disadvantaged group
- Tackle **structural and institutional barriers**, changing rules, shifting social norms and aspirations, and involving men
- **Scale up** evidence into gender-transformative policy and action



2025
GLOBAL
FOOD POLICY
REPORT

50 YEARS OF
IFPRI
LOOKING TOWARD 2050

FOOD POLICY
LESSONS *and* PRIORITIES
for a CHANGING WORLD

HYBRID GLOBAL
LAUNCH EVENT

MAY 28, 2025

Global malnutrition challenge

Policies and programs

Stuart Gillespie (Non-Resident Senior Fellow)

Deanna Olney (Director, Nutrition, Diets and Health)
IFPRI

PROGRAM AND POLICY RESEARCH

Agriculture and nutrition

Nutrition-sensitive development (including agriculture)

Food systems and diets

2000

2005

2010

2015

2020

2025

2001–2011
Regional Network on AIDS, Livelihoods, and Food Security (RENEWAL)

2012–2021
CGIAR Research program
Agriculture for Nutrition and Health (A4NH)

2022–2024
CGIAR
Initiatives
SHiFT
FRESH

2025–
CGIAR Science Program
BDN

2012–2017
Transform Nutrition
Leveraging Agriculture
for Nutrition in South
Asia (LANSA)

2017–2021
Transform
Nutrition West
Africa

2015–2021
Stories of Change
Nourishing Millions

2011–2023
Partnerships and Opportunities to Strengthen and
Harmonize Actions for Nutrition in India (POSHAN)

2003–
Harvest+ (Biofortification of staple crops)

Nutrition-sensitive development

- Defined and conceptualized nutrition-sensitive development
- Supported operationalization and design of nutrition-sensitive programs
- Developed methods to rigorously evaluate complex nutrition-sensitive programs
- Nurtured strong partnerships with implementers
- Reviewed evidence/revised guidance
- Shifted to food systems framework and focus on sustainable healthy diets



Future directions

- Wider sectoral action
 - Examining how social protection, health, water & sanitation, education, women's empowerment can complement and enhance food systems transformation for sustainable healthy diets, nutrition, and health
- Food systems transformation
 - Developing evaluation tools and methods to capture systemwide effects of innovations on healthy diets
 - Starting with consumers and diets to understand how to achieve healthy diets
 - Analysis of food environments and interactions with diets and impact of innovations
 - Partnering with a wide range of actors across food systems to design and test innovative end-to-end approaches
- Capacity strengthening and policy research to ensure evidence drives change
- Public–private partnerships
 - Understanding roles and potential benefits of partnerships with companies whose products and practices support healthy diets and nutrition

2025
GLOBAL
FOOD POLICY
REPORT

50 YEARS OF
IFPRI
LOOKING TOWARD 2050

FOOD POLICY
LESSONS *and* PRIORITIES
for a CHANGING WORLD

HYBRID GLOBAL
LAUNCH EVENT

MAY 28, 2025

Enabling environments for scaling innovations in agriculture, food systems, and nutrition

David Spielman

Director, Innovation Policy and Scaling (IPS) Unit
IFPRI

Today's world offers a wealth of novel science...



Minimum tillage



Zai planting pits



Perennial grains



Precision farming



C4 rice



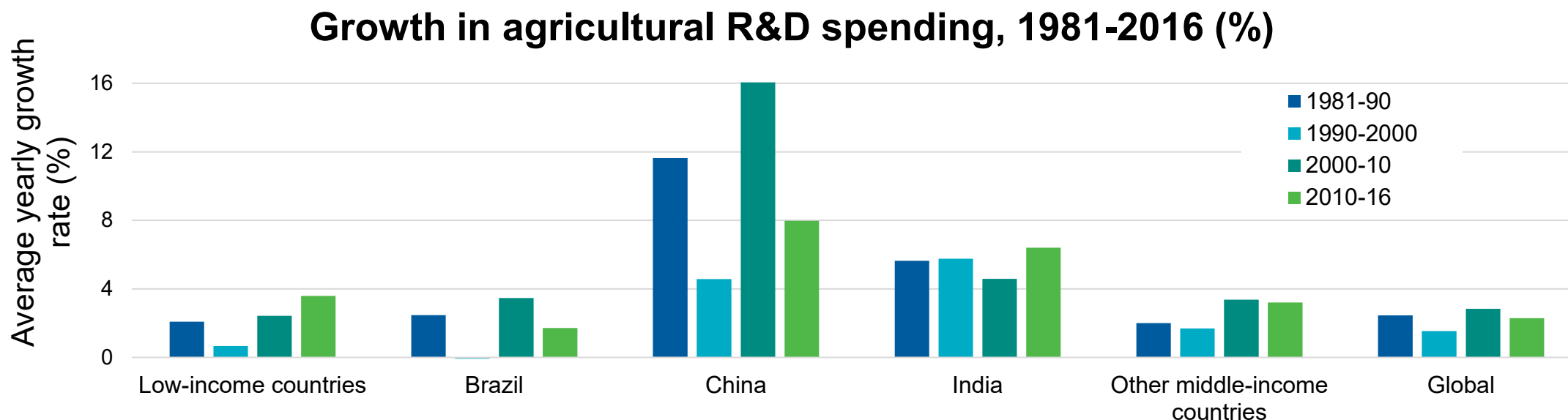
Apomixis



Gene editing

...but policy change has often lagged behind science

- **Public investment drove Asia's Green Revolution**, doubling cereal yields and output, increasing per capita income increases by 190%, and improving food security for 1.8 billion people
- **But subsequent “revolutions” were often constrained** public policy, investment, and regulatory capacity



Policy successes continue to emerge

Genetic Innovation: Seeds & traits

- *Biofortification*: Investment in nutrient-dense food staples → regulations on minimum nutrient levels → nutritional standards for food processing
- *Precision genetics*: Conventional breeding → precision breeding, credible regulatory systems, and market incentives to develop & deliver new traits

Management innovation: Soil, water, crops & livestock

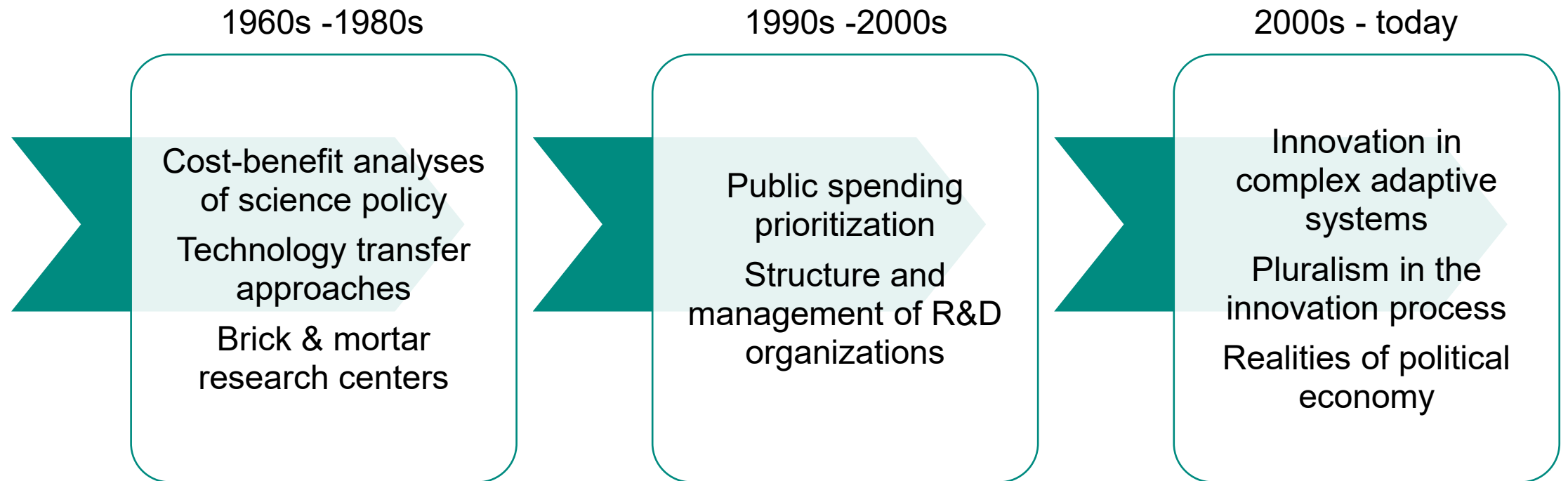
- *Extension and advisory services*: Best-fit approaches to extension system reforms, digitalization of advisory services, and promotion of pluralism

Financial innovation: Savings, credit & insurance

- Subsidized multiperil products → index-based products → novel products that bundle services and capitalize on digital and spatial technologies



Drivers of change



Looking to the future

Policy question: How do we accelerate the innovation process in agriculture, food, and nutrition?

- Focus on the informational needs and behavioral preferences of farmers and consumers: *Market intelligence*
- Complement new agrifood technologies with financial, marketing, and digital innovations: *Bundled innovation*
- Invest in the midstream points along the value chain: *Strategic innovation*
- Designing novel incentives and developing capabilities that encourage discovery, development & delivery: *Innovation incentives*
- Credibly quantify and quality the effects of innovation: *Impact evaluation*

Download the book

