

The Monthly Maize Market Report was developed by researchers at IFPRI Malawi with the goal of providing clear and accurate information on the variation of daily maize prices in selected markets throughout Malawi. The reports are intended as a resource for those interested in maize markets in Malawi, namely producers, sellers, consumers, or other agricultural stakeholders.

Highlights

- The average maize retail price increased by 14 percent during December 2018.
- By the end of December, maize retail prices in the southern and central regions were higher than the minimum farmgate price.
- Maize prices in Malawi remained lower than prices in most eastern and southern Africa markets.
- ADMARC is buying maize in 7 of 16 markets monitored.

Prices increased in December

The average maize price during the month of December was MWK144/kg. The national average retail price increased by 14 percent during the month, with prices rising in all markets (Table 1). Chitipa and Mwanza markets had the highest price increases while Rumphi had the lowest price increase.

With the exception of five markets in the northern region (Chitipa, Karonga, Rumphi, Mzuzu, and Mzimba), retail prices in all other markets were higher than the minimum farmgate price of MWK150/kg announced by the Ministry of Agriculture, Irrigation, and Water Development (MoAIWD) in mid-April 2018.

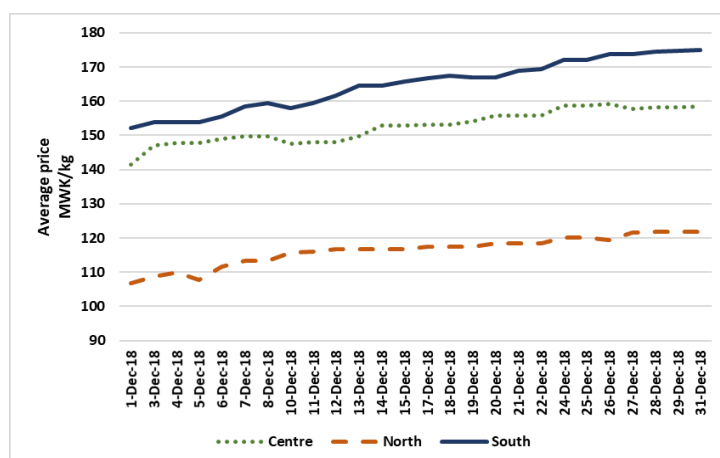
Prices remain highest in the South

Maize prices were highest in the South and lowest in the North, as has been the case since January. Prices in the South were about MWK10 higher than in the central region by the end of the month while central region prices were about MWK30 higher than in the North. Prices rose steadily in all regions during the month of December.

Table 1. Maize retail prices (MWK/kg) by market

Market	1-Dec-18	8-Dec-18	15-Dec-18	22-Dec-18	29-Dec-18	Change
Chitipa	85	105	105	105	105	↑ 24%
Karonga	107	113	120	121	126	↑ 18%
Rumphi	122	120	123	125	130	↑ 7%
Mzuzu	113	122	127	130	130	↑ 15%
Mzimba	107	107	107	110	117	↑ 9%
Salima	157	160	177	180	170	↑ 9%
Mchinji	138	150	145	150	153	↑ 12%
Mitundu	140	150	147	147	160	↑ 14%
Chimbiya	133	139	146	148	150	↑ 13%
Lunzu	150	150	160	163	170	↑ 13%
Mwanza	163	177	177	187	200	↑ 22%
Liwonde	153	160	160	170	170	↑ 11%
Luchenza	150	150	167	170	170	↑ 13%
Mulanje	153	157	173	173	175	↑ 14%
Chikwawa	140	150	150	150	160	↑ 14%
Nsanje	150	163	160	167	173	↑ 16%
All markets	135	142	146	150	154	↑ 14%

Figure 1. Daily average maize retail prices during December



ADMARC and NFRA activities

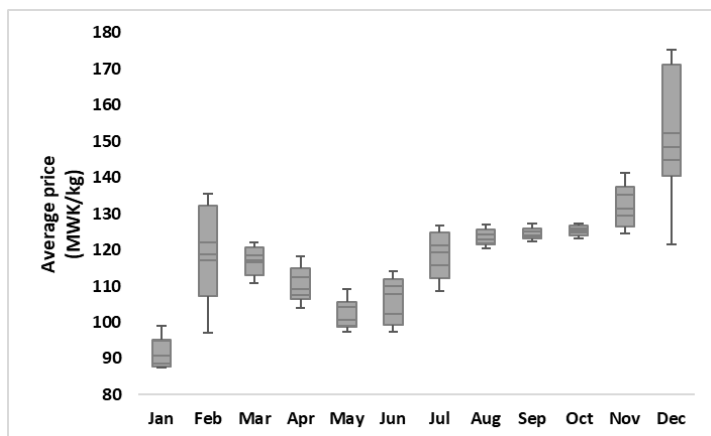
ADMARC continues to buy and sell maize at MWK150/kg. Out of 16 markets monitored, seven (Karonga, Luchenza, Mitundu, Mchinji, Mulanje, Rumphu, and Mwanza) reported that ADMARC purchased maize in December. All markets except Chitipa and Liwonde reported ADMARC sales of maize. The National Food Reserve Agency (NFRA) invited bids for the supply of 17,000 MT of maize through a competitive open tender on December 31, 2018.

Price variation in 2018

Figure 2 shows the distribution of average monthly maize prices during 2018. The furthest-up and furthest-down points on each plot indicate the minimum and maximum average maize prices during that respective month.

Price variation was highest in the months of February and December and lowest in August, September, and October. On average, the month of December had the highest maize prices while January had the lowest prices.

Figure 2. Maize price variation in 2018

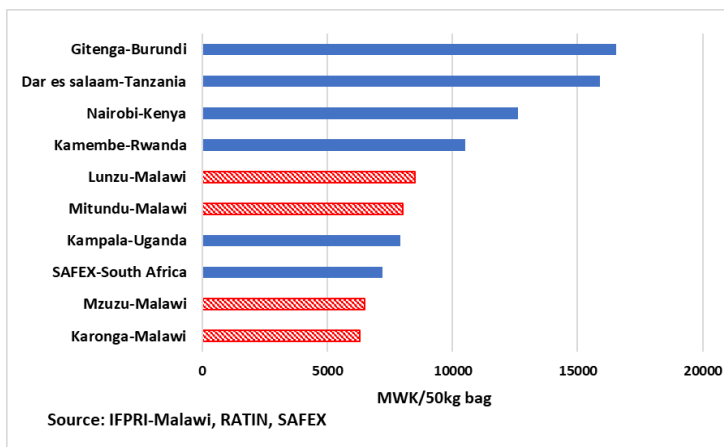


Regional prices in December 2018

Figure 3 shows retail maize prices per 50kg bag in selected markets in Malawi and in six other countries in the region. The highest retail price was reported in Gitenga, Burundi, followed by Dar es Salaam, Tanzania and Nairobi, Kenya. Karonga, Malawi recorded the lowest maize price in the region during December.

While maize prices in Malawi at the end of December were significantly lower than prices in most eastern and southern Africa markets, retail prices in Malawi's Lunzu and Mitundu markets were slightly higher than on SAFEX (the main grain futures markets in South Africa) and in Kampala, Uganda.

Figure 3. Retail maize prices in selected markets in eastern and southern Africa (as of end of December 2018)



How data was collected

IFPRI has been monitoring retail maize prices and ADMARC activities in selected markets since December 2016. Currently, the data is collected from 16 markets across the country, with monitoring occurring six days per week, excluding Sundays. At least three monitors report data from each of the markets. Data is collected by means of automated short message service (SMS) with follow-ups made by telephone if necessary. The regional prices reported in Figure 3 are collected from the Regional Agricultural Trade Intelligence Network (RATIN), IFPRI Malawi and the Johannesburg Stock Exchange (JSE).



For further information contact: Dennis Ochieng (D.Ochieng@cgiar.org) or Rosemary Botha (R.Botha@cgiar.org) at IFPRI Malawi.

To learn more about IFPRI Malawi's work, please visit: <http://massp.ifpri.info>