

Quarterly Market Report

Report No. 6a for Selected Legumes, Roots, Tubers, and Other Cereals, January to March 2022

This quarterly market report was developed by researchers at IFPRI Malawi with the goal of providing clear and accurate information on the variation of weekly and monthly retail prices of selected agricultural commodities that are important for food security and nutrition in Malawi. The reports are intended as a resource for those interested in agricultural markets in Malawi.

Highlights

- Retail prices of common bean and soyabean marginally increased by 0.2 and 1 percent respectively, while groundnut and pigeon pea increased by 7 and 18 percent respectively.
- Average retail prices of sweet potato and Irish potato decreased by 13 and 17 percent respectively.
- Retail prices of cassava marginally increased by 1 percent.
- Retail prices of rice and sorghum increased by 19 and 18 percent from last quarter.

Legumes

Figure 1 presents average monthly retail prices of selected legumes for the year 2022. In this quarter, soybean and groundnut showed an increasing trend unlike retail prices of beans which on average, were decreasing throughout the quarter.

Table 1 shows regional retail prices for the first quarter of the year 2022. In this quarter, the markets are flooded with fresh beans which drive prices of dry beans down. As shown in Table 1, retail prices of beans decreased in the Center and North but with an over marginal increase of 0.2 percent as a result of a 3 percent increase in the South. Soybean retail prices decreased in the Center and South (8 and 0.1 percent respectively) but increased by 9 percent in the North. Pigeon peas retail prices increased in all the regions with an overall increase of 18 percent in all markets.

Figure 1: Selected Legumes retail prices for 2022

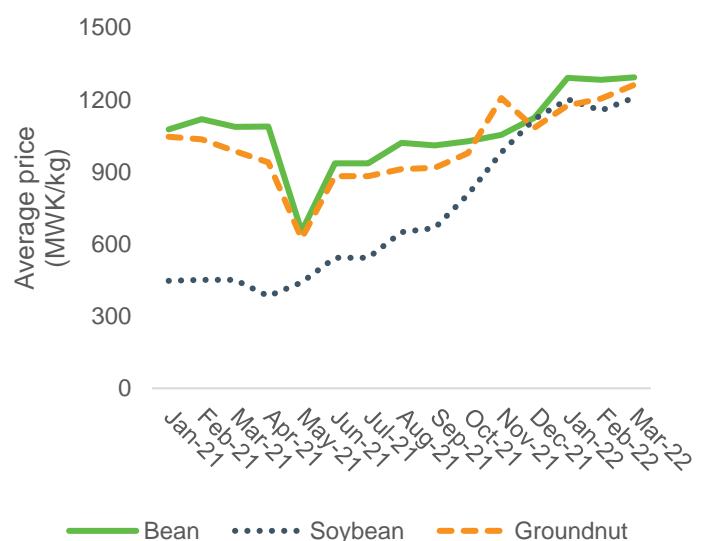


Table 1: Legume retail prices (MWK/kg) by region

	January	February	March	Percentage change Since January	
Legumes					
Common beans					
North	1131	1156	1106	↓	-2%
Center	1345	1358	1338	↓	-1%
South	1395	1335	1435	↑	3%
All markets	1290	1283	1293	↑	0.2%
Pigeon peas					
North	518	619	679	↑	20%
South	691	733	742	↑	7%
All markets	604	676	710	↑	18%
Soybean					
North	1208	1285	1320	↑	9%
Center	1093	918	1001	↓	-8%
South	1306	1260	1304	↓	-0.1%
All markets	1202	1155	1209	↑	1%
Groundnut					
North	1090	1171	1214	↑	11%
Center	1090	1128	1210	↑	11%
South	1348	1315	1362	↑	1%
All markets	1176	1205	1262	↑	7%

Note: Number of markets monitored: common bean = 9; pigeon pea = 5; sorghum = 9; groundnut = 9; - = prices not reported

Roots and Tubers

Table 2 presents the average retail prices for roots and tubers for the first quarter of 2022. Prices of selected roots and tubers except cassava dropped sharply in this quarter due to harvesting of mature and immature tubers. Over the quarter, average retail prices of Irish potato and sweet potato decreased by 17 to 13 percent respectively. While overall, cassava prices marginally increased by 1 percent.

Table 2: Root and tuber prices (MWK/unit) by region

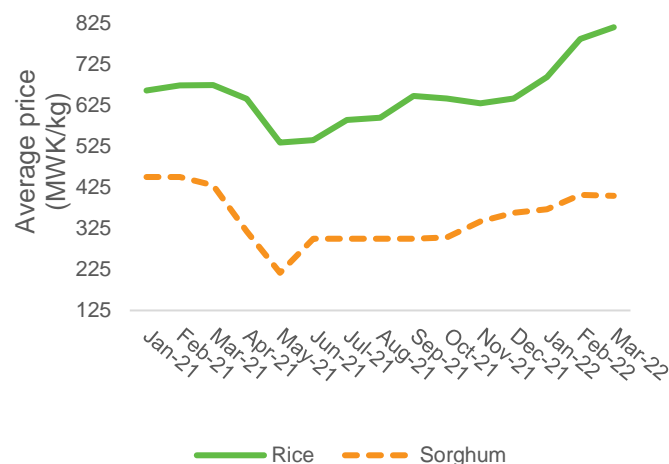
	January	February	March	Percentage change Since January	
Roots and tubers					
Cassava					
North	491	569	361	↓	-26%
Center	389	454	465	↑	20%
South	363	379	429	↑	18%
All markets	414	467	418	↑	1%
Irish potato					
North	950	1006	696	↓	-27%
Center	563	631	517	↓	-8%
South	581	718	515	↓	-11%
All markets	698	785	576	↓	-17%
Sweet potato					
South	339	301	295	↓	-13%
All markets	339	301	295	↓	-13%

Note: Cassava and Irish potato are priced per kilogram; sweet potatoes are priced per heap and only monitored in the south; number of markets monitored: cassava = 6; Irish potato = 5; sweet potato = 5

Other Cereals

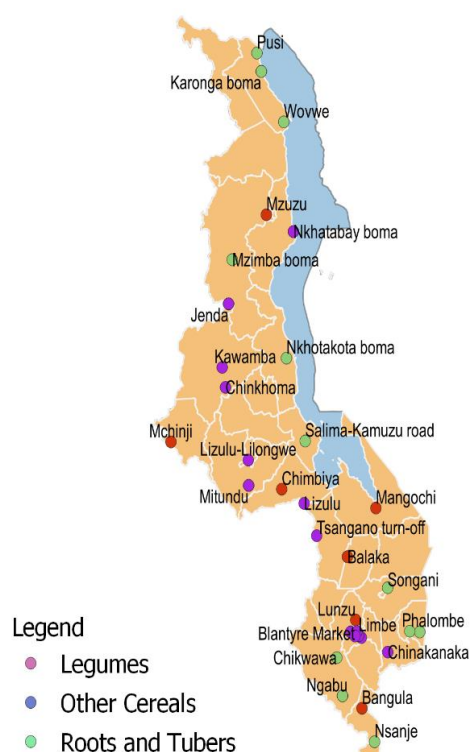
In the first quarter of 2022, rice retail prices showed a sharp increasing trend unlike sorghum retail prices which slightly decreased in the last month of the quarter (Figure 2).

Figure 2. Rice retail prices for 2021



On average, rice retail prices in the North (MWK781/kg) were higher than in the Center (MWK774/kg) and South (MWK721/kg). Overall, rice retail prices averaged at MWK759/kg, 19 percent higher last quarter (MWK640/kg). Sorghum prices increased by 18 percent from last quarter averaging at MWK392/kg.

Figure 3: Location of markets by commodity type



How data were collected

With financial support from the European Union, IFPRI Malawi began monitoring retail prices of selected legumes, roots and tubers, and non-maize cereals* in selected markets in October 2020. Currently, prices are collected from 44 markets across the country, with monitoring occurring once per week. Three monitors report prices from each market. Data is collected by means of automated short message service (SMS) with follow-ups made by telephone the next day if needed. The commodities monitored are being phased-in, starting with legumes, root crops and other cereals, and then expanding to include livestock products and fish by the end of March 2022. Note that the number of markets monitored vary by commodity because major markets are targeted in areas where these commodities are widely produced.

* Daily retail prices for maize are available from our [monthly maize market reports](#)



For further information contact

Aubrey Jolex (a.jolex@cgiar.org) at IFPRI Malawi.

To learn more about our work, visit <https://massp.ifpri.info> or follow us on Twitter ([@IFPRIMalawi](#)).