

5  YEARS OF
IFPRI

FOOD POLICY RESEARCH
for a CHANGING WORLD

IFPRI Strategy 2026–2030

*Powering Policy
with Evidence for
Impact at Scale*

THE INTERNATIONAL FOOD POLICY RESEARCH INSTITUTE (IFPRI)

provides research-based policy solutions to sustainably reduce poverty, hunger, and malnutrition in low- and middle-income countries. Together with our partners, we generate evidence for country- and region-led policies and investments that contribute to poverty reduction and help ensure that all people have access to safe, sufficient, nutritious, and sustainably produced food. Through multi-sectoral research in partnership with governments, national research organizations, universities, businesses, and nongovernmental organizations, IFPRI informs policies, institutions, programs, and investments that contribute to improved livelihoods and sustainable, resilient, and equitable agriculture and food systems. Established in 1975, IFPRI is a Research Center of CGIAR, the world's largest agricultural innovation network, and the only CGIAR Center solely dedicated to food policy research.

Currently, the Institute has nearly 500 employees from around the world and offices in 16 countries; more than half of our diverse research staff are based in low- and middle-income countries.

ABOUT IFPRI'S STRATEGY

We live in a world that is still too far from achieving the goals of sustainable development for all people and the planet. In a dynamic development landscape, evidence-based policy remains a powerful lever for building resilient, equitable, and nutrition-sensitive food systems. Policy research, in turn, provides a compass for effective decisions by informing every stage of the policy and program cycle – from agenda-setting and design to policy implementation and evaluation for impact, course correction, and scaling of successful interventions. Policy research also fosters accountability and trust with stakeholders.

IFPRI, working closely with our partners around the world, is proud to have contributed to this “compass” over the past 50 years and is pleased to release our *2026–2030 Strategy: Food Policy for a Changing World*. We remain committed to providing sound evidence and data to inform policies, programs, and investments to achieve a sustainable world free of poverty, hunger, and malnutrition. Our strategy builds on approaches that are relevant to the world of today and tomorrow, while tackling the challenges and opportunities that lie ahead. In addition to *what* we will aim to work on as we look to the future, our new strategy also addresses *how* and *where* we will work and operate in the coming years.

This strategy draws on three major publications released by IFPRI in 2025. We especially thank the authors of IFPRI's 50th anniversary edition of the *Global Food Policy Report*, titled *Food Policy: Lessons and Priorities for a Changing World*; the 2025 book *What Do We Know about the Future of Food Systems?*; and an impact assessment of our work, *Taking Stock: Impacts of 50 Years of Policy Research at IFPRI*.

We received valuable inputs from partners and stakeholders during a series of seminars on the 2025 Global Food Policy Report's forward-looking reflections. These included the [hybrid global launch of the report](#), featuring a keynote speech on innovations for the future by the 2019 Nobel Laureate in Economic Sciences, Michael Kremer; an African launch held in Senegal at the African Food Systems Forum; a South Asian launch held in India; and a Latin American/Caribbean launch held in Costa Rica. Together with an event held in China, these engagements collectively reached 35,000 people. In addition, we held numerous engagements with funding, research, and scaling partners over the past two years.

Our special thanks go to the members of IFPRI's Strategy and Program Committee, ably chaired by Christopher B. Barrett, and IFPRI's Board of Trustees. The strategy development process was led by IFPRI Senior Director Purnima Menon, and initially also by former Senior Director Channing Arndt, and drew on inputs from across the Institute's senior management team and research staff, with support from Adam Kennedy, Pascale Sabbagh, and IFPRI's Communications and Public Affairs team.

In a complex and changing world with persistent hunger, malnutrition, and social inequalities, IFPRI is committed to deploying our talents, capabilities, and partnerships to accelerate positive change. We look forward to partnering with all of you in the implementation of our new strategy.

Johan Swinnen

Director General

International Food Policy Research Institute

THE POWER OF POLICY RESEARCH

Policy is one of the most powerful levers for systems change, especially when informed by evidence on the best bets for transforming lives. For five decades, the International Food Policy Research Institute (IFPRI) has been a trusted provider of data and evidence to support global efforts to transform food systems for a more equitable, resilient, and sustainable future. Over these decades, we have engaged with our partners to deliver rigorous, policy-relevant, and impactful research. The evidence generated by this research has empowered policymakers, communities, and institutions to use agriculture and food policy as critical entry points to reduce poverty, end hunger, improve gender equality, safeguard natural resources, and improve nutrition. These impacts are well-documented, and our strategic approach is informed by evidence gathered on successful pathways to impact.

IFPRI's vision is a sustainable world free of poverty, hunger, and malnutrition

The world has made remarkable progress toward ending hunger and improving food security. Agricultural productivity has increased, child malnutrition has declined in many regions, and millions have moved out of poverty, with support from well-designed policies and targeted interventions. Yet, we face a new generation of challenges. Inequality is growing, climate shocks are intensifying, and fragility and conflict are disrupting food supply chains and lives. At the same time, dietary preferences are evolving, and food systems must adapt to shifting demographics, urbanization, and evolving food environments and markets. There are also important new opportunities, foremost among them the increasing strengths for conducting research and developing and implementing effective food policies in all countries and regions. New opportunities are also presented by major advances in new technology, artificial intelligence, and big data and by increased private sector investment.

With these major trends in view, IFPRI's 2026–2030 Strategy reaffirms our commitment to working with partners to generate high-quality, cutting-edge, and timely research to inform food systems policies and investments that can drive positive outcomes as we address new challenges. We focus on accelerating impact through a proven four-pronged systems approach. We also commit to deepening the connectivity of research between global, regional, and national settings to accelerate evidence-to-impact pathways. To support this systems approach, our strategy is built around five thematic areas of food policy research that can reshape food systems for greater well-being, equity, and sustainability.

IFPRI's mission is to work with partners to provide research-based policy solutions to improve food security, nutrition, and livelihoods, contribute to empowerment for all, and promote sustainable, climate-resilient food systems

FOUR APPROACHES TO RESEARCH AND IMPACT

Our approach to research for impact is founded on a systems view and builds on our extensive experience with diverse research methodologies and evidence-to-impact pathways. Our four-pronged approach allows us to generate knowledge that is actionable across the policy cycle – from identifying problems to deploying best-bet policy solutions – and is responsive to political, societal, and institutional realities.

1. **Clarifying the situation and outlook.** To inform relevant and effective programs and policies and to support policy agenda-setting, IFPRI engages with partners to understand the existing global, regional, national, or local context around diverse development challenges and formulate a vision for the future. Our work helps illuminate challenges, especially among the most vulnerable populations, and provides inputs to short- and long-term strategic planning. IFPRI's foresight analytics and policy models provide an understanding of how shifts in public policies, private investments, trade shocks, and climate uncertainties are likely to affect hunger, poverty, and development in the long term – and provides tools and frameworks to plan, prioritize policies, and manage trade-offs accordingly. Analytic work based on our datasets, including primary surveys, also informs agendas for action.

2. **Testing and scaling solutions.** Together with partners, IFPRI co-develops innovative institutional, technical, governance, policy, and behavior change interventions. Our research evaluates their effectiveness, adaptability to varied contexts, and the feasibility of scaling to reach more people, deepen their impact, or improve these interventions in other ways (Box 1). Concurrent efforts to advance complementary policy, regulatory, and investment options further support impacts on economic opportunity, well-being, social inclusion, and environmental sustainability in and beyond targeted communities.

3. **Understanding and shaping enabling environments.** Enabling environments are crucial to accelerate the reach and impact of policies, innovations, and interventions. Our work identifies the public policy, governance, and regulatory frameworks and cultural and financial contexts that create conducive conditions for sustainable solutions to food insecurity, poverty, and malnutrition. We collaborate closely with policymakers and their advisors working on food, agriculture, and nutrition, as well as in the financial sector, the digital innovation space, and other sectors of the economy and society. Our research and engagement aims to strengthen the use of evidence to inform decision-making and ensure that food security, poverty, healthy diets, livelihoods, and gender equality are at the forefront of policy agendas at all geographic levels.

We see research not just as a tool for solutions, but as a catalyst for just, resilient, and prosperous societies

Scaling innovations for impact

Across agriculture, nutrition, and climate adaptation, innovative solutions abound – but too few move beyond the pilot scale. Constraints include limited finance, weak institutions, and fragmented demand for innovation. To increase impact, IFPRI will identify the enabling conditions that allow proven solutions to scale sustainably. This requires studying the role of policy incentives, market structures, and partnerships between public and private actors. Rigorous impact evaluation and learning from real-world experiences are vital for understanding what works, where, and why. Through collaboration within the CGIAR system and with governments and investors, IFPRI can help translate research into action at national and regional levels.

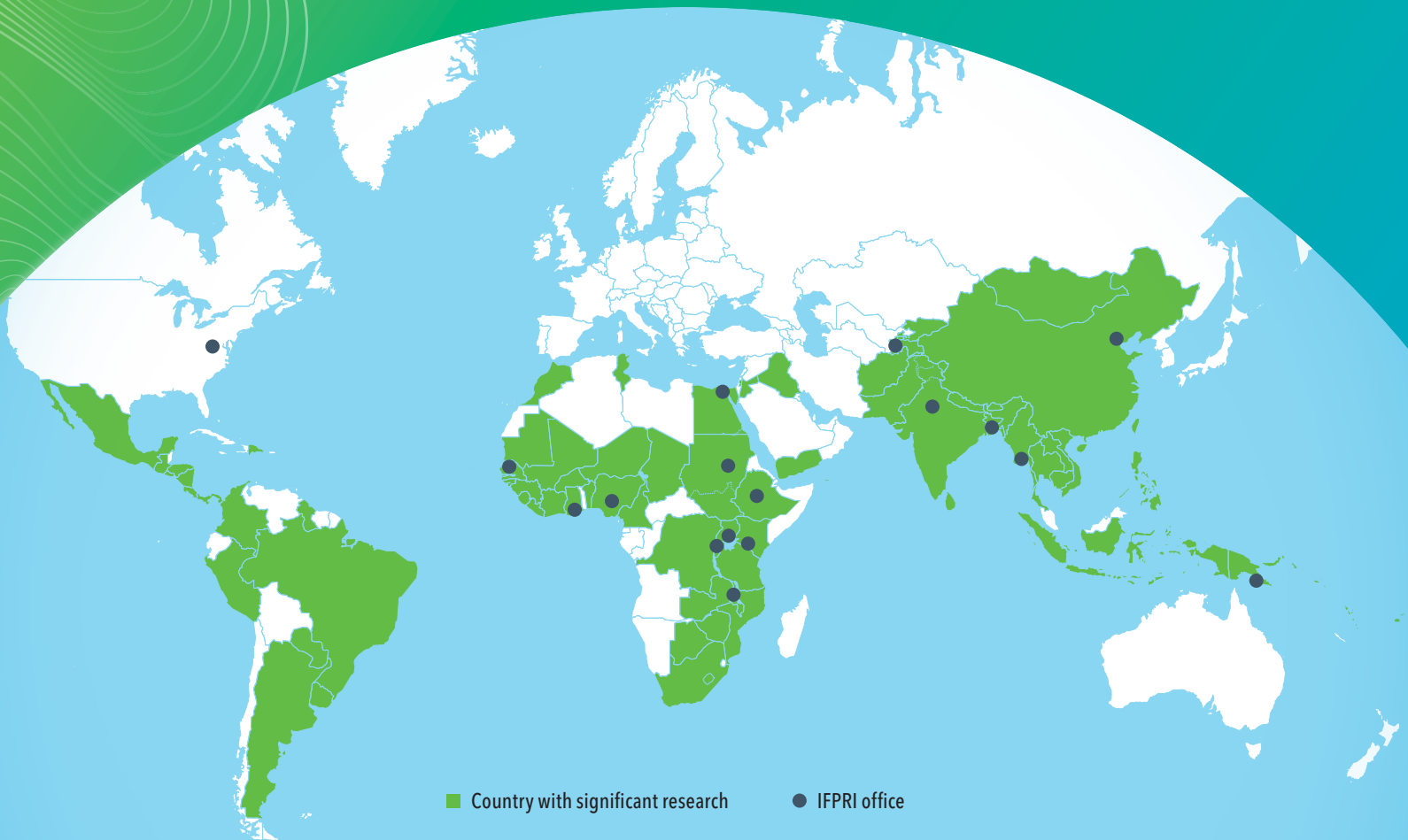
4. **Strengthening tools, methods, and capacity.** With partners, we develop research methods and tools to advance knowledge and improve measurement around diverse development issues. Examples include tools to measure women’s empowerment, new methods of surveying farmers’ participation in value chains, and the development of digital innovations in nutrition. We engage closely with a wide range of stakeholders through capacity sharing in areas including data collection, policy analysis, and research, and specific topics such as nutrition. This strengthens the quality and uptake of tools, metrics, and methods, contributing to the sustainability of knowledge and to capacity in low- and middle-income countries.

BUILDING ON IFPRI'S STRENGTHS

Research quality and impact. IFPRI's research has a 50-year record of informing decisions that improve policies, investments, and programs, of developing research methods and tools, and of research capacity sharing around the world. IFPRI's staff are leaders in their fields, with a wide range of expertise and experience in transdisciplinary research. The impact of our research is captured in numerous independent external impact assessments, and its quality is reflected in consistently high rankings in diverse fields and frequent publication in top journals across the fields of economics, food policy, nutrition, global health, and more. We remain deeply committed to nurturing research excellence and delivering impact, and will accelerate our commitment to decentralized, demand-driven, and collaborative research in the coming years.

Geographic reach and presence. IFPRI's geographic reach is expansive, with ongoing work in more than 70 diverse countries and more than half of our staff based in low- and middle-income countries. IFPRI's regional and country offices in Asia and Africa provide an on-the-ground presence that enhances our support to the development of country-specific policies, strategies, and policy implementation. Our presence and extensive, long-term partnerships across countries and with regional bodies and organizations facilitate IFPRI's regional strategies for Africa, South Asia, Southeast Asia, Central Asia, and Latin America and the Caribbean, focusing on the same five thematic areas but tailored to the distinct characteristics and challenges in each of these regions.

Where we work



This presence also focuses our research on critical evidence gaps, and promotes timely responses to regional and country priorities and support to inclusive policy processes. IFPRI's commitment to decentralization and presence in strategic low- and middle-income countries will deepen co-creation of research agendas with governments, regional organizations, the private sector, and civil society. By working directly with these partners and taking a multisectoral systems approach to food policy, IFPRI will ensure that its evidence-based insights are responsive to real-world needs and can inform inclusive, context-specific solutions.

Partnerships. IFPRI's commitment to building strong and trusted partnerships is central to our interdisciplinary research and the development of evidence-based policy solutions. Our inclusive partnership networks, which include more than 300 organizations, many in low- and middle-income countries, increase the reach and impact of our research. As part of CGIAR, IFPRI also maintains strong engagement with other CGIAR Centers, and is actively engaged in the 2025–2030 CGIAR research portfolio. To address new challenges and opportunities, we will also seek innovative approaches to working with research and impact partners.

IFPRI is committed to building on our strengths to inform policies for impact

Communications to support impact. Communications and public engagement are central to supporting the impact of evidence. We engage closely with decision-makers and stakeholders across the research cycle and beyond in diverse ways. IFPRI reaches a broad audience through seminars and conferences, videos, podcasts, participation in regional and global events, convenings of stakeholders, blogs, and traditional and social media. We also make our research freely available in peer-reviewed publications, policy briefs, datasets, and analytical tools and remain committed to open access and public goods. With an eye on shortening the path between research and impact, we will invest more deeply in strategic communication and engagement efforts with partners at the local, national, regional, and global levels. Our goal is to ensure that high-quality research findings and policy recommendations reach their intended audiences to accelerate actionable investments for impact.

RESEARCH THEMES ANCHORED AROUND FOOD SYSTEMS

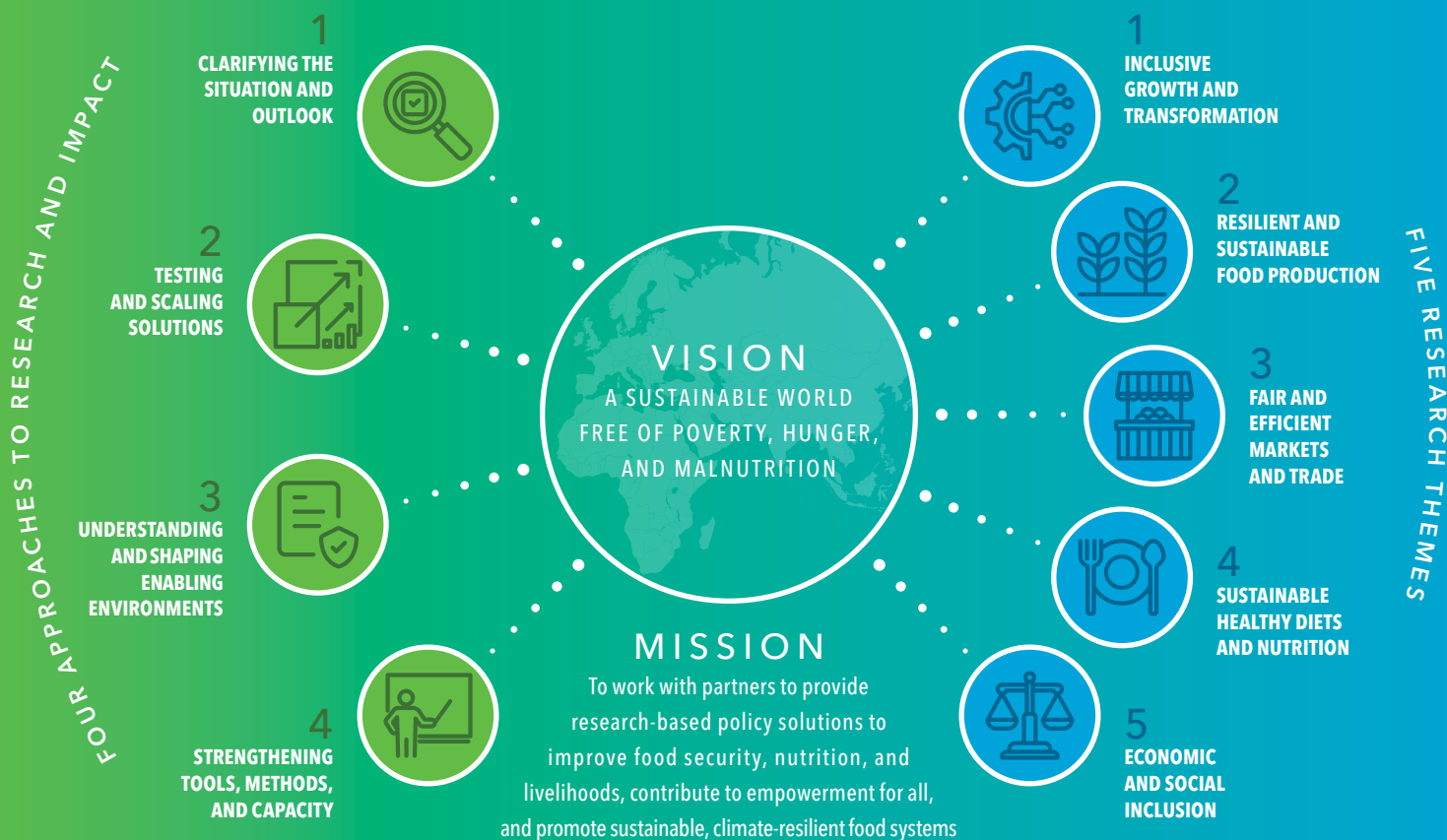
Recognizing that food systems are deeply interconnected with health, climate, livelihoods, and governance, our strategy embraces complexity, interdependence, and long-term transformation through a focus on five broad themes.

The *2026-2030 Strategy* recognizes food systems transformation as both a driver and a consequence of inclusive growth and transformation, with investment and governance policies shaping outcomes (**Theme 1**). At the heart of our strategy are three interconnected themes that cut across the food system – from production to diets and nutrition, and from diets back to production, with market systems providing the vital connection (**Themes 2, 3, and 4**). Our fifth research theme centers our focus on delivering equitable outcomes for women, youth, marginalized populations, and the poor (**Theme 5**).

We apply our four approaches to research and impact across these themes, tailoring our work to global, regional, and national contexts and priorities. Across all these themes, we prioritize responses that help address major global trends and challenges, including, but not limited to, addressing climate change impacts, fragility and conflict, demographic changes, unhealthy food environments, urbanization, the promise and risk of technology and AI, scaling for impact, financing for food systems transformation, and the critical role of good governance.

IFPRI and our partners will organize our research and engagement around these five interconnected themes.

Our strategic research framework is grounded in systems thinking and a strong commitment to social equity and inclusive, sustainable economic growth that is rooted in agriculture and food systems transformation



Inclusive Growth and Transformation

Agricultural and food systems are expanding and evolving across low- and middle-income countries, creating new opportunities that can help people move out of poverty. However, this transformation is highly uneven, both across and within countries, with poverty and undernutrition concentrated in rural areas, while cities increasingly lead economic development. IFPRI's research focuses on **unlocking the potential of food systems to drive equitable, sustainable economic transformation**. This work will investigate how policy, institutional frameworks, and private sector players can promote inclusive business models, unlock value chains for smallholders, and overcome political economy barriers that hinder alignment between commercial interests and development goals.

As the downstream portion of agrifood systems (processing, trade, transport, and retail) grows in importance, we will look beyond the farm to position the broader food system as a catalyst for inclusive growth. IFPRI will use foresight analysis to assess investment trade-offs, impact evaluations to identify cost-effective interventions, and governance analysis to coordinate policy reforms across multiple agencies and jurisdictions.

To ensure the growing role of the private sector in food systems generates benefits for all, governments must foster an enabling environment that attracts investment while ensuring that small and medium farmers and enterprises can compete, adapt, and thrive. IFPRI's research will explore ways to encourage inclusive private-sector-led growth, identify promising value chains, and address political economy barriers to equitable food systems development. In response to the declining availability of public funding for food systems transformation, our research will examine the financing of policies and programs and consider how public and private investment can be sustained.

BOX 2 MEETING THE CHALLENGE

Governance for accountability and coordination

Food systems are inherently cross-sectoral. Agriculture, health, environment, finance, and trade ministries all shape outcomes, yet coordination among them is often weak. Effective governance is essential to align these diverse actors and ensure coherent, evidence-based policy implementation. We aim to:

- Expand IFPRI's work on institutional arrangements that promote coordination and accountability.
- Use cross-country research to determine how incentives, capacities, and partnerships within governance systems influence policy success.
- Develop tools and indicators for policy coherence to help decision-makers navigate trade-offs among productivity, nutrition, inclusion, and environmental goals.
- Assess evolving global governance and trade norms and their implications for food security.
- Continue to act as a trusted neutral broker and source of evidence by convening national and regional dialogues.

The design of sound policies must be followed by effective implementation. To help strengthen governance for implementation, IFPRI research will examine the institutional, political, and organizational factors affecting policy implementation, and identify strategies for strengthening these capabilities in different contexts. We will work closely with government, private sector, and civil society partners to co-design feasible implementation pathways, test delivery approaches, and assess impacts on inclusive growth.

Challenges and opportunities for inclusive growth and governance in agrifood systems vary across regions (Box 2). IFPRI tailors its research, policy engagement, and capacity-strengthening efforts to the unique structural, institutional, and political contexts of each region. We will continue to examine how agriculture-centered economies can generate decent work, support small and medium enterprises, strengthen informal markets, and scale digital and climate-smart innovations in ways appropriate to the national and regional context.

Resilient and Sustainable Food Production

Climate change and natural resource degradation pose a growing threat to the world's food systems, contributing to the vulnerability of poor populations. Extreme weather, shifting seasons, soil and water degradation, and biodiversity loss threaten yields and livelihoods. Food systems must both adapt to these impacts through sustainable practices and contribute to mitigation. IFPRI research focuses on **driving progress in increasing resilience and sustainability**. We will support governments and development partners in the transition to sustainable, equitable food systems through identification of climate change and environmental impacts and evaluation of policy, governance, and technical innovations and solutions that prioritize the most marginalized populations, including smallholder farmers, women, and Indigenous communities.

IFPRI will use approaches grounded in systems analysis to anticipate and examine trajectories of change for interlinked climate, conflict, water, energy, economic, health, and food systems, assess their resilience, and explore the impact of food systems shocks.

Global modeling, foresight analysis, and policy engagement will continue to be used to assess the distributional and macroeconomic impacts of climate change and develop effective climate strategies. We will assess the impacts of shocks and stressors on vulnerable populations and will identify and test locally appropriate and inclusive strategies for climate adaptation and mitigation, including climate-smart agriculture, sustainable land and water rights and management, and innovative financial services. This work will stress improvements in on-farm productivity and resource-use efficiency, empowerment of women working in agriculture, and strengthening of social equity and collective action in adaptation.

We will also advance digital and AI-driven solutions for food production systems, particularly in combination with novel technologies, inputs, practices, and bundled products, to ensure that new technologies are inclusive, context-sensitive, and environmentally sound (Box 3).

IFPRI will explore the long-term drivers of change that shape the resilience and sustainability of food systems. We will generate data and evidence on promising long-term strategies – from circular economy models and renewable energy to precision genetics and alternative proteins – and evaluate how they can be scaled to benefit poor and marginalized populations.

To enhance enabling conditions for sustainable food systems transformation, IFPRI will help to strengthen agricultural innovation networks for more effective exchanges of knowledge, tools, and resources, and will work to improve natural resource governance for better management of land, water, and forests. IFPRI will continue to advance metrics that link agricultural productivity to ecosystem health, inform climate finance allocation, and analyze how policies affect both emissions and resilience.

BOX 3 MEETING THE CHALLENGE

Technology innovations and artificial intelligence

Digital technologies and AI are driving advances in agriculture and food systems – from predictive analytics for weather and markets to advisory tools and biotechnology innovations. Yet these advances risk deepening inequalities if access remains uneven or governance weak. Innovations must be designed and deployed in ways that benefit smallholders and vulnerable communities. IFPRI research will:

- Shed light on how digital transformation affects productivity, labor markets, and equity.
- Identify barriers to technology adoption and the impact of automation on rural employment to inform balanced policy responses.
- Contribute to evidence and frameworks for inclusive and ethical practices in governance of agrifood data, incorporating privacy, ownership, and use guidance.
- Demonstrate the power of AI for public goods by employing big data for foresight, early warning, and market intelligence, and advocate for open, equitable data ecosystems, with a commitment to ensuring that digital and biotech innovations serve smallholders and low-income consumers.

Fair and Efficient Markets and Trade

Geopolitical shifts, evolving consumer demand, and climate change are reshaping global and regional trade and food markets in ways that can raise food prices, worsen inequality and food insecurity, and reduce sustainability, while insufficient investment in infrastructure and logistics for value chains is slowing market development. A fair and efficient global food system – including a stable trading environment with low barriers to trade – and efficient domestic markets are essential to addressing urgent challenges, including food insecurity, malnutrition, climate change, and economic inequality. Our research will help decision-makers navigate today's turbulent environment by **providing foresight and evidence for feasible policies for a fair and efficient global food system and markets for all.**

IFPRI will continue to improve evidence on the impact of trade policies and disruptions through real-time monitoring of trade and food prices and volatility and the use of global modeling tools. Our evidence-based insights inform decision-makers about the probable effects of price shocks and policy changes, and our modeling tools will allow for increasing predictive accuracy on a range of market and welfare outcomes.

BOX 4 MEETING THE CHALLENGE

Financing food systems transformation

Unprecedented levels of stable and flexible investment are needed across food systems to achieve healthy, equitable, and sustainable food systems. Yet financing remains both limited and fragmented. International development funding is decreasing, domestic funds are limited, private investment is uneven, and international finance is not fully aligned with climate and nutrition goals. To unlock and direct resources toward transformative, inclusive investments, IFPRI will:

- Map existing financial flows and identify investment priorities across food systems value chains to identify challenges and opportunities.
- Create tools to de-risk sustainable investment—through blended finance, guarantees, and policy incentives.
- Identify methods for measuring returns on investment not only in economic terms but also in climate adaptation, health, and equity outcomes.
- Study innovations in financing food systems with robust metrics and case studies to support governments and partners in aligning agricultural, climate, and social financing to shared goals and in designing policy frameworks that attract responsible private capital.

IFPRI's research will also inform policies for more efficient domestic markets and investments in value chain transformations that can reduce transaction costs and food waste, address food safety concerns, and improve the availability and affordability of nutrient-rich foods. We will focus on policies that have been shown to have a large impact, such as improvements in transportation infrastructure. We will also co-develop and evaluate technological and institutional solutions, such as digital technologies for certification and traceability. Policy process and political economy analysis will be used to help identify politically feasible policy options.

Our research will also focus on ways to increase and better leverage financial flows for food systems transformation (Box 4). This work will fill knowledge gaps on the financial flows of food systems using robust metrics and case studies, and it will identify ways to direct resources toward inclusive transformative investments, including in logistics and infrastructure to improve value chain functioning.

Sustainable Healthy Diets and Nutrition

Poor diets and malnutrition are a leading driver of disease and economic losses, and today, a rapidly rising incidence of overweight and obesity coexists with undernutrition and micronutrient deficiencies in many vulnerable populations. Solutions to **achieving sustainable healthy diets that are affordable, accessible, and desirable must be grounded in an understanding of context-specific drivers of consumers' food choices**, including the interaction of food systems with many other sectors. Our work on sustainable healthy diets and nutrition will build on decades of experience on agriculture and nutrition linkages as well as newer food-systems-based consumer-focused solutions to find ways to reshape food environments, increase intake of nutrient-rich foods, and curb rising rates of overweight and obesity.

At the consumer end of the food value chain, we explore how availability, affordability, and preferences influence food choices, and identify solutions that promote diverse, nutritious, and sustainable diets. We also assess how food systems intersect with other systems (health, social safety nets, education, and more) to better deliver high-impact solutions with multiple benefits.

To strengthen the evidence base on the complex drivers of malnutrition, we will invest in innovative metrics, analytical tools, and data collection methods. Data analysis and foresight work will help anticipate future risks and inform strategic policy responses that prioritize the most pressing nutrition challenges.

We will identify and support testing and scaling of high-impact cost-effective interventions across sectors, including addressing the commercial determinants of malnutrition and end-to-end solutions (Box 5), as well as pioneering work on biofortification. Our research will identify strategies for affordable and sustainable diets under climate change.

IFPRI will continue to identify and test cost-effective community and health systems innovations for maternal, child, and adolescent nutrition, including prevention and treatment of child wasting, school-based interventions, and adaptive nutrition- and gender-sensitive social protection approaches. With an eye to food-related health issues, our research will consider agricultural worker safety, agriculture-associated infectious and noncommunicable diseases, and food safety. We will evaluate policies and technologies for food safety to help farmers and other value chain actors meet higher safety standards, reduce food loss and waste, and improve consumer access to safe food.

Policy implementation and governance for nutrition will be strengthened through analysis and provision of practical tools. Platforms for knowledge and collaboration, including South-South collaboration, strengthened partnerships, and shared learning will build capacity for nutrition impact.

BOX 5 MEETING THE CHALLENGE

Reshaping food environments and markets for better diets

Consumer choices that affect diet quality and ultimately nutrition outcomes are heavily shaped by food environments, markets, and policy incentives. Today, rising prevalence of diets high in ultra-processed foods and in salt, fat, and sugar are driving a growing double burden of malnutrition. IFPRI aims to support improvements in food environments and increase access, affordability, and appeal of healthy diets by testing and scaling innovative, nutrition-sensitive food systems solutions. Our work will:

- Identify commercial determinants of malnutrition, including market structures, business practices, and incentives that shape food environments.
- Generate evidence on how food marketing regulations, labeling, and private-sector innovations can improve diet quality without exacerbating inequality.
- Identify and test end-to-end solutions to increase consumption of healthy foods, including fruits, vegetables, pulses, and other perishable, nutrient-dense foods, through work along entire value chains from production to retail.
- Explore how trade, digital platforms, and inclusive business models can support small producers and make diverse healthy diets more affordable and accessible.

Economic and Social Inclusion

Women, smallholder farmers, and marginalized groups, including the extreme poor and populations living in fragile and conflict-affected settings, face growing inequity and a deepening divide in access to food and other resources. Countries experiencing stubbornly high poverty rates are often characterized by poor infrastructure, underinvestment in safety nets, weak governance, and persistent economic and social inequalities, and they have limited resilience to health, extreme weather, and food price shocks. Reducing inequities and empowering individuals and communities through access to jobs, education, finance, and decision-making is fundamental for building resilience and fostering sustainable development.

To help people move out of poverty, IFPRI will **identify scalable policy solutions to strengthen economic and social inclusion**. Our research will explore the linkages between poverty, food insecurity, and malnutrition, and the role of economic, social, and climate drivers of these outcomes. We will work with partners to generate disaggregated data, design and evaluate inclusive policies, and identify levers that combine food systems actions with other sectoral actions to shift power and resources toward the most excluded, including in fragile and conflict-affected contexts (Box 6). We will also work to expand understanding of how gender and other social factors shape individuals' rights, opportunities, and well-being.

As a leading provider of causal impact evaluations, IFPRI will strengthen and refine its approach to working with partners to provide frontier evidence on innovative anti-poverty programs and social protection. Research will evaluate the use of food and cash transfers, targeting, and cost-effectiveness of interventions, and identify pathways to make them more gender-, nutrition-, and climate-sensitive. Technical and policy innovations will be tested to identify ways to improve smallholders' productivity and market access and provide appropriate financial tools such as insurance. Our work will examine multifaceted livelihoods and economic inclusion programs, as well as interventions to improve gender equity, women's empowerment, and outcomes for youth and marginalized groups (Box 7).

BOX 6 MEETING THE CHALLENGE

Fragility and conflict

Fragility and conflict affect more people now than at any time in recent decades, undermining livelihoods and pushing millions into hunger. Disrupted markets, displacement, and climate-related shocks compound stresses on food systems. Humanitarian and development policies require a strong focus on resilience to be effective. To advance this approach, IFPRI research will:

- Strengthen early warning systems and anticipatory action approaches and inform rapid, context-sensitive responses by improving data systems and foresight tools.
- Generate evidence and policy analysis that connect short-term relief to long-term transformation, including evaluating how social safety nets and trade policies can stabilize access to food during crises while supporting recovery and long-term inclusive growth.
- Integrate humanitarian, development, and peacebuilding approaches – the “triple nexus” – to increase resilience and support governments and regional organizations in embedding resilience principles within national food strategies.

Also under this theme, IFPRI will expand efforts to shape enabling environments to fully integrate research on governance, institutions, and women's participation with work on poverty reduction and inclusion. We will use IFPRI's economic modeling resources to understand how policies supporting agriculture and food systems transformation can create new jobs, reduce poverty, and strengthen women's empowerment. Our work on measuring women's empowerment will continue to build on the Women's Empowerment in Agriculture Index (WEAI) to strengthen users' ability to analyze and interpret the metrics.

BOX 7 MEETING THE CHALLENGE

Demographic transitions: *Growing youth populations and urbanization*

The world's demographic dynamics are diverging sharply and regions such as sub-Saharan Africa and South Asia are experiencing a "youth bulge." These shifts have a profound influence on food demand, labor markets, and migration patterns. At the same time, expanding cities are driving demand for diets that are more diverse, but often unhealthy. IFPRI will strengthen understanding of these transitions and related policy responses to ensure better lives, livelihoods, and food futures for youth. Our work will:

- Identify insights and solutions for employment pathways that connect young people to opportunities within food systems.
- Assess how education systems, vocational training, and digital innovation intersect with food systems transformation to inform program design that can turn demographic pressure into demographic potential.
- Generate actionable evidence on school meals as a transformative tool to shape the dietary preferences of the youth while also supporting agricultural markets and environmental resilience.
- Inform responses to changes in food environments, access, and dietary patterns in rural and urban areas.

Transforming food systems is not just a technical challenge. It is also a moral and political imperative. The world needs to produce more and better food, while also ensuring that food systems policies, investments, and actions help to grow economies, nourish people, sustain the planet, and empower communities. With this new strategy, IFPRI aims to contribute to this transformation through research, evidence-building, and partnerships.

IFPRI'S VALUES

IFPRI's work is grounded in a set of values that together (1) emphasize the integrity and relevance of research, (2) keep our focus on equity, inclusion, and sustainability, and (3) center on ethical research and business practices.

Quality, relevance, and impact of research

- **Scientific integrity.** We uphold the highest standards of rigor, transparency, and ethics in our research, ensuring that our work is credible, impartial, and accessible.
 - **Innovation and learning.** We embrace innovation and continuous learning, leveraging new technologies, interdisciplinary approaches, and diverse perspectives to solve complex challenges.
 - **Relevance.** We focus on generating actionable and relevant evidence that informs policies, institutions, and investments, bridging the gap between research and decision-making.
 - **Impact.** We measure success not just by the quality of our research output but, more importantly, by the positive changes we contribute to around the world.
-

Equity, inclusive partnerships, and sustainability

- **Equity and inclusion.** We prioritize fairness, gender equality, and the empowerment of marginalized communities in all aspects of food systems research and policy.
 - **Partnership.** We work inclusively with global and local partners – governments, communities, academia, and the private sector – to co-create evidence-based solutions and scale impact.
 - **Sustainability.** We strive for food systems that protect natural resources, support biodiversity, and contribute to climate resilience for current and future generations. We extend our sustainability focus to our operations and business practices as well.
-

Transparency and accountability

- **Transparency.** We aim for transparency both in our research and our financial and business practices, both internally and externally.
 - **Accountability.** We steward the resources that contribute to our work honestly, ensuring robust and ethical research, financial, and business practices to strengthen accountability.
-

INTERNATIONAL FOOD POLICY RESEARCH INSTITUTE

A world free of hunger and malnutrition

IFPRI is a CGIAR Research Center

1201 Eye St, NW, Washington, DC 20005 USA | T. +1-202-862-5600 | F. +1-202-862-5606 | Email: ifpri@cgiar.org | www.ifpri.org | www.ifpri.info

Handle: <https://hdl.handle.net/10568/178597>