



INTERNATIONAL
FOOD POLICY
RESEARCH
INSTITUTE

IFPRI

2024 ANNUAL REPORT



Contents

Board of Trustees	3
Letter from the Board Chair and Director General	4
IFPRI at Global Events	5
Highlights from IFPRI's Policy Engagement	5
Highlights from IFPRI's Research	6
Around the World	10
IFPRI and CGIAR	11
IFPRI in 2024	12
2024 and 2023 Financial Statements	13
2024 Financial Contributors	14



BOARD *of* TRUSTEES

Ernest Aryeetey, Ghana

Phyllis Caldwell, IFPRI Vice Board Chair, USA

Ramesh Chand, India

Rachel Chikwamba, Zimbabwe

Susanne Frueh, Germany

Pascal Lamy, IFPRI Board Chair, France

All Board members serve on IFPRI's Strategy and Program Council.

Additional members of the Strategy and Program Council

Christopher Barrett, Chair, USA

Nancy Birdsall, USA

Letter from the **BOARD CHAIR** and **DIRECTOR GENERAL**

As we reflect on 2024 and look to the future, it is clear that IFPRI's mission remains vital, but food policy research must adapt to an evolving world. The landscape of global development and international cooperation is rapidly changing amid unabated conflicts, crises, misinformation, growing geopolitical uncertainties and, as we write this in May 2025, a sharp decline in development assistance and a shaken international trading system. Yet the fundamental need for high-quality evidence and independent policy analysis remains more critical than ever. Research-based, timely, and well-coordinated actions have the power to build communities that are healthier and more food secure, resilient, and sustainable worldwide.

Throughout 2024, IFPRI worked with local, national, and global partners to develop policy-relevant evidence that addresses widespread malnutrition, builds resilience in fragile and conflict-affected food systems, and supports country-led efforts to improve people's lives and livelihoods. This included conducting essential surveys on the impact of conflict on rural and urban food systems in Sudan, tracking how the war in Gaza has affected food security, and expanding the coverage of IFPRI's special blog series on how overlapping crises and shocks impact food systems. IFPRI's flagship 2024 Global Food Policy Report, which highlighted the importance of putting healthy, diverse diets at the heart of food systems transformation and identifying policy routes to improve nutrition outcomes, also showcased IFPRI's deep expertise and commitment to better diets and nutrition. Its findings were discussed at nine events around the world, drawing more than 35,000 participants and widespread media coverage.

IFPRI researchers produced 1,078 publications, including 372 peer-reviewed publications, all of which support our ranking as number one worldwide among all agricultural economics departments and in the top 1 percent of all institutions registered in Research Papers in Economics (RePEc). With more than 110 blogs and 90 datasets published in 2024, IFPRI prioritized robust open access and online engagement with partners and stakeholders. IFPRI organized more than 40 online

and in-person events in 2024, which garnered participation from nearly 63,000 people from around the world.

The Board of Trustees has continued to provide effective oversight and guidance to the Institute's strategic research, financial, and operational planning. In November, IFPRI was delighted to welcome Prof. Ramesh Chand, Dr. Rachel Chikwamba, and Ms. Susanne Frueh as IFPRI's newest Board Trustees. We remain grateful to System Board members who stepped down from IFPRI's Board as part of the implementation of CGIAR's unified governance review process.

Much of 2024 was also devoted to working in partnership with CGIAR colleagues to design CGIAR's new [2025-2030 Science and Innovation Portfolio](#), which comprises eight Science Programs, four Accelerators, and a Scaling for Impact Program. IFPRI researchers are engaged in most of these and excited about the ongoing collaboration with their colleagues from across the CGIAR.

2025 marks IFPRI's 50th anniversary. It is a time to celebrate our impacts over five decades and plan how to tackle the challenges of the future. The 2025 Global Food Policy Report will provide an overview of how food policy research has evolved since the Institute's founding in 1975 and determine key research priorities to be pursued in the run-up to 2050. A new forward-looking strategy will be released toward the end of the year and guide how IFPRI can build on existing partnerships and forge new ones, innovate using cutting-edge methods and tools, and most effectively meet the needs of decision-makers in charge of pro-poor policies, programs, and investments. We are ready to rise to the challenges of this fast evolving world, so that we can continue to have a positive and lasting impact on the lives of the world's most vulnerable people.

Pascal Lamy

Board Chair

Johan Swinnen

Director General

IFPRI at Global Events

In 2024, IFPRI researchers participated in a wide range of global events, including [COP29 and Climate Week](#) at the UN General Assembly; the [WTO Annual Agriculture Symposium 2024](#); [OECD conference](#) on sustainable agricultural productivity; [Africa Food Systems Forum on Delivering Food Systems Transformation in a Digital and Climate Era](#); [IAMO Forum on Land Functions in Times of Change](#); [Bellagio Convening on Alternative Proteins](#); [16th Global Forum for Food and Agriculture](#) on achieving zero hunger; and the [High-Level Political Forum on Sustainable Development](#) on eradicating poverty amid multiple crises. In addition, IFPRI engaged in many regional and national events across Africa, Asia, and Latin America and the Caribbean.

IFPRI also played an important convening role, both through its own [seminars](#) and with partners. The seventh annual [Delivering for Nutrition \(D4N\)](#) conference, the flagship nutrition event hosted by IFPRI with CGIAR and a range of co-hosts around the world, focused on implementation research in South Asia. The event brought together a diverse array of stakeholders bridging research, implementation, and policy to tackle nutrition challenges and highlight examples of success. Through participation in these influential events, IFPRI staff have ensured our research and analysis inform international discourse and action on sustainable solutions for food security, healthy and diverse diets, livelihoods, and gender equality.

Highlights from IFPRI's Policy Engagement

Global developments and increasing regional conflicts in 2024 drew attention to the many challenges facing food systems in improving food security, nutrition, and livelihoods sustainably in low- and middle-income countries. Through IFPRI's [many partnerships](#) and wide portfolio of research on the challenges facing poor and vulnerable people, the Institute continued to play a leading role in informing the global policy agenda and helping partners address short-term needs and develop long-term strategies to transform and "future proof" food systems at the regional, national, and global levels.

In response to the recent spike in poverty and hunger in fragile- and conflict-affected settings, IFPRI provided data, analyses, and recommendations to governments and organizations facing ongoing humanitarian crises, including in [Myanmar](#), Yemen, [Sudan](#), and [Gaza](#). As Sudan's protracted civil war continued, IFPRI and partners conducted essential surveys on impacts on [rural](#) and [urban](#) food systems. Critical analysis and insights from a decade of empirical research on Myanmar were published in a [book](#), filling an important knowledge gap about the impact of economic, political, and pandemic-related crises on the country's agricultural economy. A continuing [blog series](#) looked at how conflicts, price volatility, extreme weather events and other shocks affect food systems. In addition, IFPRI was invited to provide monitoring and evaluation for a [new initiative](#) to address malnutrition among women and children in conflict-affected areas, being implemented by UNICEF, the World Food Programme, and the World Health Organization.

IFPRI's flagship 2024 [Global Food Policy Report](#) called for concerted efforts to make sustainable healthy diets more affordable, accessible, and available while considering environmental impacts and people's preferences. IFPRI also contributed to other influential global reports, including the [High Level Panel of Experts' report](#) on food security and nutrition in urban and peri-urban food systems, the Food System Economics Commission's [Global Policy Report](#) on the economics of food systems transformation, and the [2023/2024 Global Food 50/50 Report](#), focused on gender equity in international organizations.

Support for country- and region-led food systems policy is facilitated by IFPRI's research, partnerships, and engagement around the world. In Asia, highlights included comprehensive data, analysis, and recommendations to advance food security and nutrition in [Bangladesh](#), evidence from [India](#) on the role of sanitation investments in reducing infant and child mortality, and an [initiative](#) to promote women's agency in India. In Africa, IFPRI contributed research on the challenges and opportunities created by the growing youth population and collaborated with African partners on analyses of regional agrifood [trade](#) and the continent's progress on development goals, as well as evaluations of [Egypt's](#) social protection programs. In [Latin America](#), a new program is responding to regional demand for promising innovations for sustainable agrifood systems.

Highlights from IFPRI's Research

IFPRI provides research-based policy solutions to sustainably reduce poverty and end hunger and malnutrition through food systems transformation. To build evidence and advance knowledge for all aspects of food systems, IFPRI works in more than 80 countries and partners closely with public institutions, the private sector, nongovernmental organizations, governments, farmers' organizations, donor agencies, and research and academic institutions, as well as other CGIAR Centers. The following are a few research highlights from 2024, drawn from across our seven research units and many country offices.



Foresight Policy and Modeling

Rising CO2 levels and rice yields. While rising CO2 levels are expected to boost future [rice yields](#), diverse rice subspecies and the impact of global warming introduce uncertainty into production projections. A meta-analysis of CO2 field experiments and crop modeling for the top 14 rice-producing countries showed that production may rise by 7.6 percent by the 2050s, but yield disparities between low- and middle-to high-income countries are expected to grow.

Wheat vulnerability to disease. Wheat blast is a devastating disease that has spread widely since it emerged in the 1980s. Researchers coupled a [wheat crop](#) simulation model with a newly developed wheat blast model to provide quantitative global estimates of vulnerability, finding that under climate change, wheat blast will spread primarily in tropical regions.

Africa's manufacturing puzzle. Recent growth in Africa has seen declines in [agricultural labor employment](#), with labor productivity increasing in agriculture but declining in manufacturing. Researchers investigating this puzzle found high-performing large manufacturing firms are more capital intensive than would be expected, while small firms absorb labor but are not increasing productivity.

Development strategies and climate change. An analysis using Malawi as a case study applied a decision-analysis tool to compare the effectiveness of an [agriculture-led strategy](#) against other development approaches under climate-induced economic uncertainty. Findings suggest that an agriculture-led strategy outperforms other options across almost all weather and climate scenarios.

Trade-offs in emission savings. A land-use model was used to project the impact of pledges made at COP26 to [reduce deforestation](#). These efforts could help avoid 167 million hectares of deforestation by 2050, compared to a baseline without extended forest protection, but would lead to increased conversion of nonforested land to agriculture.

Natural Resources and Resilience

Risks from solar-powered groundwater irrigation. [Solar-powered groundwater irrigation](#) is expanding rapidly in low- and middle-income countries. While IFPRI researchers found that solar-powered irrigation may help these countries meet their obligations to mitigate climate change, insights from behavioral sciences and early evidence suggest that these emissions reductions may not meet expectations, and groundwater use will likely increase.

Biological control for agro-ecosystem restoration. Loss of [biodiversity](#) has left much of the world's farmland more vulnerable to pests. IFPRI analysis found that mainstreaming biodiversity-driven biological control could effectively reduce pest risk by bolstering foundational ecosystem services and helping restore functional integrity to production ecosystems.

Experiential learning for resource management. Collective action games offer a promising way to encourage communities to work together on water management. In India, local partners helped to implement an [experiential learning approach](#) in more than 6,000 communities. IFPRI researchers examined the risks and benefits of this scaling project, providing lessons for future efforts.

Groundwater and food security. Rapid increases in depletion and degradation of groundwater, particularly in regions already facing acute water scarcity, can have irreversible impacts on food security. Using a [climate-water-food systems modeling framework](#), IFPRI researchers developed exploratory scenarios, finding that halting groundwater depletion without causing negative impacts on food security will require supportive policy interventions in food and water systems, such as increasing the effective use of rainfall and investments in agricultural R&D.

Nutrition, Diets, and Health

Improving evaluations of nutrition interventions. Despite growing global momentum behind food systems strategies to improve planetary and human health, there is limited evidence of what types of interventions work. A review drawing lessons from six evaluations of [interventions for nutrition](#) in Africa and

South Asia identified key methodological challenges and formulated recommendations to improve the quality of such studies.

Dairy production for better nutrition. A [special issue of Food Policy](#), edited by IFPRI researchers, examined evidence on the importance of dairy production and consumption for improving nutrition among young children in low- and middle-income countries as well as on the supply- and demand-side constraints to growth in dairy consumption. A related [IFPRI seminar](#) considered the economic challenges of accelerating dairy development in the Global South.

Cost and affordability of healthy diets. Recently developed metrics on the [cost and affordability](#) of healthy diets (CoAHD) have quickly become mainstream food security indicators. IFPRI developed two important innovations in CoAHD measurement at the global level that account for cross-country differences in age structure and improve the calculation of household food budgets.

School meals in Yemen. [School feeding programs](#) can support children's nutrition, health, and education in emergencies. An assessment of school feeding modalities in urban Yemen identified models that serve the diet and nutrition needs of school-age children and are cost-efficient, acceptable, and feasible.

Human milk banks and neonatal mortality. Although global child survival rates have risen since 1990, improvements in [neonatal mortality rates](#) have lagged. A study conducted at a maternity hospital in Kenya found that a [human milk bank and lactation support program](#) led to dramatic increases in newborn feeding with human milk and a reduction in average time spent in neonatal care.

Parenting knowledge and practice. A study in rural Mozambique explored [caregiving practices](#) and sources of parenting knowledge. The finding that the caregivers' own parents and health providers are key sources of guidance underscores the need for holistic approaches to enhance early child development in similar contexts.

Innovation Policy and Scaling

Bioavailability of micronutrients in biofortified foods. A systematic review examined [bioavailability of target micronutrients](#) in conventionally biofortified crops following storage and/or processing. Measuring micronutrient bioaccessibility

and bioavailability is critical to optimize nutrient availability and absorption and thus improve programs that target deficiencies.

Misinformation and seed demand. [Improved cassava varieties](#) could increase yields by up to 60 percent in Nigeria, but demand for these varieties remains low, perhaps due to missing information about quality. Measuring the effect of seed quality misperceptions on demand showed substantial influence on farmers' valuation of seed and bidding behavior, which has implications for the design of seed sector policies.

Digital tools for farm productivity. [Information and communications technology](#) (ICT) can help boost smallholder productivity and incomes, including by providing timely and targeted agricultural advice and facilitating access to markets. An evaluation of a program in Malawi that provides low-cost, wide-coverage ICT extension to farmers found improvements in income but not productivity for some farmers, though the lack of mobile phones presented a barrier.

Agro-input dealers and gender bias. [Gender bias](#) favoring men may explain why some sectors remain dominated by men. Analysis using a unique dataset of ratings of local agro-input dealers provided by smallholder farmers found evidence of persistent gender bias in customer perceptions, creating an important barrier to entry for female agro-input dealers.

Poverty, Gender, and Inclusion

Women's Empowerment Metric for National Statistical Systems. The [Women's Empowerment Metric for National Statistical Systems](#), launched in early 2024, offers a streamlined instrument to assess multiple dimensions of empowerment across individuals with a variety of livelihood strategies in both rural and urban settings, and is suitable for large-scale, multitopic surveys. A [policy seminar](#) highlighted how the tool can benefit policymakers.

Educational impacts of unconditional cash transfers. An impact evaluation of a large-scale unconditional [cash transfer program](#) on child schooling in Mali found that the program led to significant improvements in schooling outcomes for girls, but not for boys.

Gender-equitable attitudes. [Graduation model interventions](#) aim to help households escape poverty, yet few focus on restrictive gender norms. An assessment in Ethiopia showed improved attitudes and increases in men's domestic engagement at the one-year mark of a graduation program, but by the three-year mark, impacts were only sustained when men's engagement groups were introduced to promote more equitable norms.

Disclosure of violence against women and girls. Surveys on [violence against women and girls](#) are widely acknowledged to underestimate the true prevalence of such violence. An experiment in Senegal randomly assigned women and girls to either face-to-face interviews or computer-assisted self-interviews. Disclosure of intimate partner violence was 4-7 percentage points higher with the self-interviews, and disclosure of non-partner violence was 6-12 percentage points higher.

Markets, Trade, and Institutions

Impact of farm subsidies on global agricultural productivity. The agriculture sector receives substantial [fiscal subsidies](#), both through programs linked to production and those that are not. An examination of the global impact of subsidies suggests a strong positive effect of input subsidies on both agricultural output growth and labor productivity.

Outsourcing agricultural services and farmer adaptation. Globalization and transformation of agrifood value chains have sparked interest in ["outsource" agricultural services](#) that facilitate farmers' participation in international and domestic value chains. An analysis of the emergence of these services in horticulture and grain production found they help farmers in all stages of the product cycle, but governments could do much more to support their development.

Jobs for women and youth. While [agrifood value chains](#) have potential to create jobs and reduce disparities, there are systemic barriers to women and youth's participation. Using data from agrifood value chains in Bangladesh and Uganda, an issue brief highlights significant gender and age employment gaps in mid-stream value chain activities, such as trading, processing, and wholesaling, and offers recommendations to address the challenges in this "hidden middle."

Post-COVID-19 economic recovery. Drawing on multiple big data sources from China, researchers examined patterns of human mobility and job creation before, during, and after the initial [COVID-19 pandemic](#) lockdown. Results show that the pace of post-lockdown mobility recovery in a region is significantly influenced by its pandemic experience.

Development Strategies and Governance

Evidence-based policymaking. Using Ethiopia's National Information Platform for Nutrition (NiPN) as a case study, IFPRI researchers evaluated the platform's effectiveness in improving [evidence-based policymaking in nutrition](#). NiPN's reverse evidence-to-policy model, which prioritizes policymakers' needs and ensures the relevance of evidence, has substantial potential for transforming policymaking for nutrition and other sectors.

Agroecological transitions. Global interest in agroecology is growing, yet [agroecological transitions](#) remain fraught with challenges. A study using a political economy approach proposed interrelated dimensions for analyzing agroecological transitions.

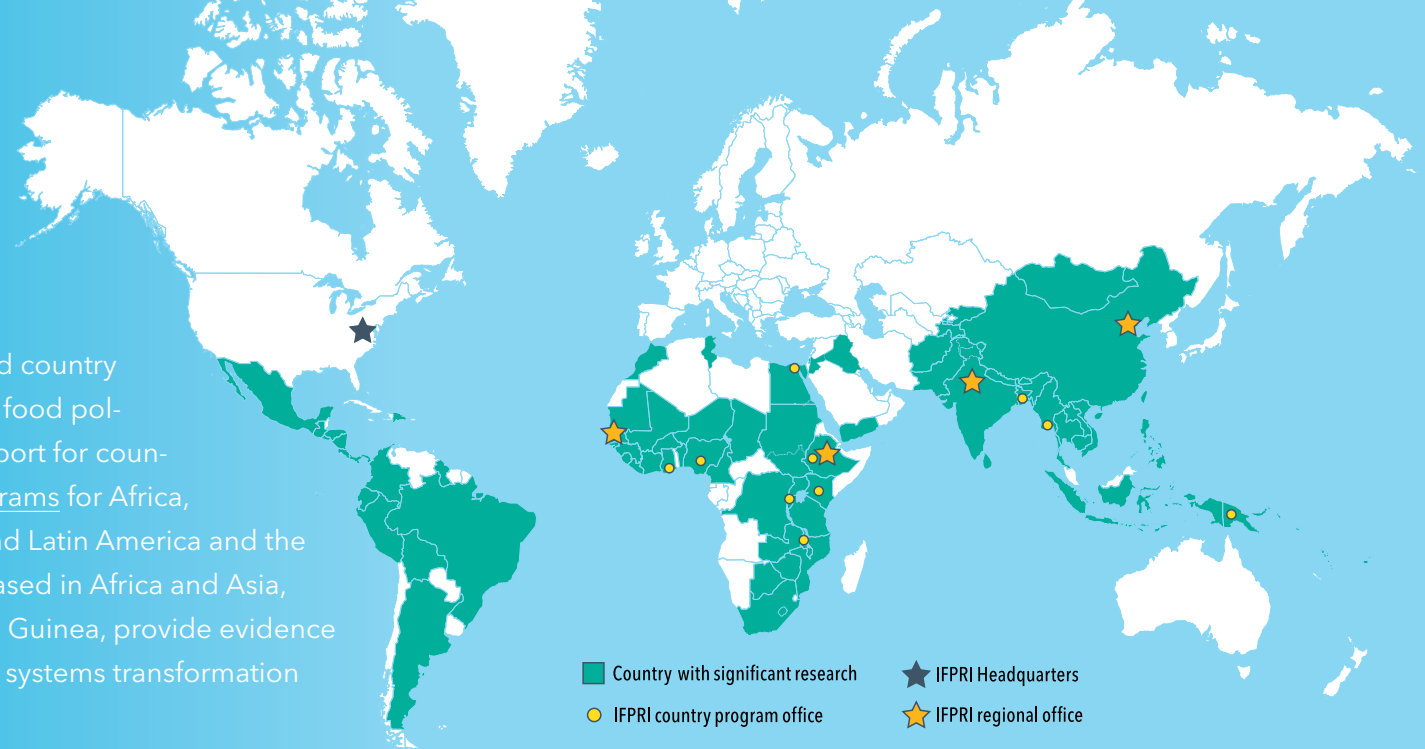
Agronomic knowledge. Over the past 50 years, Brazil has experienced rapid [agricultural transformation](#). An analysis of the role of scientists, the state, and the environment in shaping agricultural research agendas demonstrates how public agricultural research shapes the long-term development of food systems.

Food prices and wages of the poor. The [affordability of nutritious food](#) is a critical dimension of food security. Yet, high-frequency indicators of food affordability are rarely collected systematically—especially during rapidly evolving crises. IFPRI researchers advocated tracking the wages of the poor as a timely, accurate, and cost-effective means of monitoring food affordability.

Political economy of agrifood policy in Africa. A review of the literature on the [political economy](#) of agrifood policy in sub-Saharan Africa presents a conceptual framework for understanding policy influences and highlights key areas for future analysis, including the role of cities in food policy, the possibilities presented by expanded ICT access, and the efficacy of new public administration modalities.

Around the World

IFPRI maintains a strong regional and country presence to respond to demand for food policy research and deliver holistic support for country-led development. [Regional programs](#) for Africa, East and Central Asia, South Asia, and Latin America and the Caribbean and [country programs](#) based in Africa and Asia, including a new office in Papua New Guinea, provide evidence and capacity strengthening for food systems transformation and broader development efforts.



Bangladesh. In many countries of the Global South, food consumption patterns and consumer preferences are often not well understood. An examination of demand responses to price and income changes among rural households in Bangladesh provides evidence that [consumer preferences](#) matter for transforming food systems for sustainable healthy diets.

Central Asia. Ensuring proper [infant and young child feeding](#) (IYCF) practices is especially critical in Central Asia, where one in five children suffer from stunting, wasting, or overweight. A study of women's involvement in intrahousehold decision-making and practices in Central Asia found that woman's greater decision-making power predicts greater adherence to recommended IYCF practices.

China. To help the country's dairy farms reduce their [greenhouse gas emissions](#), IFPRI researchers working with Chinese colleagues developed an analytic framework to identify cost-effective options for the dairy industry.

Colombia. Partnering with Latin America's Avanzar2030 initiative, IFPRI researchers and Colombian colleagues worked to generate guidelines to help the Colombian government design conditional and sustainable [agricultural credit programs](#).

Ethiopia. Inadequate safe water supply and poor sanitation and hygiene continue to be important risk factors for diarrhea and stunting globally. Researchers used data from the Ethiopian Demographic and Health Survey and applied the new World Health Organization/UNICEF Joint Monitoring Program service standards to assess progress in [water, sanitation, and hygiene](#) coverage.

India. An evaluation of the effectiveness of an integrated [agriculture-nutrition intervention](#), delivered through women's self-help groups in five Indian states, found improvements in some intermediate outcomes such as household income, cultivation of home gardens, and utilization of government schemes. However, these did not lead to significant improvements in women's body mass index, dietary diversity, or empowerment.

Kenya. A new book from IFPRI researchers and Kenyan experts provided actionable information for Kenya policymakers as a new government took on the country's [agricultural and food system challenges](#).

Myanmar. Joint property rights are often considered preferable to sole rights, particularly if the latter are strongly biased toward men. IFPRI researchers applied a general theoretical framework of determinants of [property rights](#) to Myanmar, where household property rights are generally collective but land rights are legally in the name of one family member.

Papua New Guinea. IFPRI conducted the most expansive [consumption expenditure survey](#) of the country's rural households in more than a decade. The resulting report shows the continuing predominance of subsistence agriculture and reliance of rural diets on inexpensive, starchy staple foods.

Rwanda. To understand why [stunting levels](#) fell in some districts but stagnated or increased in others, researchers interviewed mid-level and community actors implementing Rwanda's multisectoral nutrition policy to establish factors that contribute to these different outcomes.

Sudan. Development of [infrastructure in river basins](#) requires navigating important trade-offs. To minimize trade-offs across water, energy, and food objectives related to dams on the Blue Nile, an IFPRI paper identified efficient operation plans to support alternative cropping patterns.

Yemen. Protracted civil conflict increases [malnutrition among children](#), with impacts on life-long health and prosperity. A study in Yemen estimated the effect of unconditional cash transfers in mitigating this adverse impact, finding that cash transfers substantially reduce projected negative nutritional impacts of an increase in armed conflict.

IFPRI and CGIAR

As part of CGIAR, IFPRI continued its strong engagement with other CGIAR Centers and a wide array of national and regional partners, contributing to many of the 2022-2024 thematic and regional [CGIAR Research Initiatives](#). In 2025, the Institute looks forward to contributing to CGIAR's [2025-2030 Research Portfolio](#), comprising eight Science Programs, a Scaling for Impact Program, and four Accelerators, which will allow us to deepen research and policy collaboration across sectors and disciplines in a more integrated and cohesive way.



IFPRI *in* 2024

PUBLICATIONS

372
peer-reviewed publications

1,078
total publications from IFPRI researchers

2,694,342
Google Books pages viewed

21,871
ISI Web of Science citations

111,563
publication downloads from CGSpace

92
datasets published

MEDIA

 **142,745** Twitter followers

 **203,985** Facebook followers

 **105,654** LinkedIn followers

 **318,820** blog views

 **18,000** podcast listens

PROFESSIONAL RANKINGS*

#1 in Agricultural Economics Departments

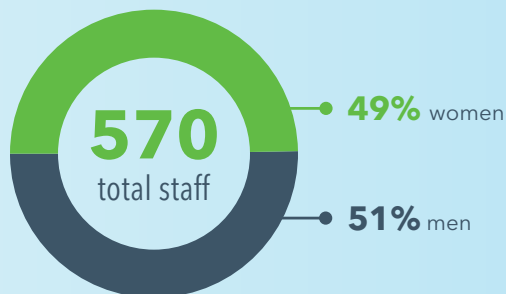
#1 in the field of Agricultural Economics

#2 in the field of Africa

#5 in the field of Development

* Source: RePEc.

IFPRI STAFF



283
outposted staff
and local hires

IFPRI staff
are from
63 countries
around the world

as of December 31st, 2024.



2024 and 2023 FINANCIAL STATEMENTS

STATEMENTS OF FINANCIAL POSITION (in US\$ thousands)

	2024	2023
ASSETS		
Cash and cash equivalents	\$23,712	\$14,434
Investments	60,739	69,157
Advances, prepaids and other assets	10,125	9,276
Accounts receivable, net	28,244	24,450
Total current assets	122,820	117,317
Property and equipment, net	3,477	4,287
Right of use asset	18,849	22,562
Total assets	145,146	144,166
LIABILITIES AND NET ASSETS		
Accounts payable and accrued expenses	15,974	8,770
Accrued vacation	5,200	4,476
Unexpended project funds	44,294	41,380
Amount held for HarvestPlus program	20,027	25,875
Total current liabilities	85,495	80,501
Lease liability	27,275	32,530
Accrued postretirement benefits	4,637	4,854
Total liabilities	117,407	117,885
NET ASSETS WITHOUT DONOR RESTRICTIONS		
Board-designated	505	543
Undesignated	23,614	22,596
Other net assets	3,620	3,142
Total net assets without donor restrictions	27,739	26,281
Commitments and contingencies		
Total liabilities and net assets	145,146	144,166

STATEMENTS OF ACTIVITIES (in US\$ thousands)

	2024	2023
REVENUES AND GAINS		
Windows 1& 2	\$48,536	\$40,116
Window 3	22,658	27,338
Bilateral	50,286	42,346
Other revenue and gains	1,705	77
Total revenues and gains	123,185	109,877
EXPENSES AND LOSSES		
Research expenses	61,578	57,168
CGIAR collaborator expenses	5,717	1,786
Non-CGIAR collaborator expenses	41,179	38,421
General and administration expenses	14,522	13,955
Other expenses and losses	1,763	205
Total expenses and losses	124,759	111,535
Operating surplus (deficit)	(1,574)	(1,658)
FINANCIAL INCOME AND EXPENSES		
Financial income	2,821	2,274
Financial Expenses	(267)	(272)
Surplus for the year	980	344
OTHER CHANGES IN NET ASSETS		
Unrealized gain (loss) on investment	399	2,139
Post-retirement related changes	79	(623)
Other changes in net assets	478	1,516
CHANGE IN NET ASSETS WITHOUT DONOR RESTRICTIONS	1,458	1,860

Note: The above is a summary of the financial information for the 2024 and 2023 calendar years. The full statements are available on the IFPRI website (IFPRI.org)



2024 FINANCIAL CONTRIBUTORS

IFPRI greatly appreciates the donors who supported IFPRI's research through their contributions to the CGIAR Fund, <https://www.cgiar.org/funders/>, without which our work would not be possible. IFPRI also thanks the many other donors supporting our work, which are listed below.

Abt Global, United States

African Climate Foundation, South Africa

Aga Khan University

AGRA

AKADEMIYA2063 (A2063)

Anonymous

Asian Development Bank

Asian Productivity Organization

Australian Centre for International Agricultural Research (ACIAR)

Australian Department of Foreign Affairs and Trade

Bioversity International

Bureau for Food and Agricultural Policy, South Africa

Canada

CARE, Malawi

Cargill, Inc., United States

CGIAR Fund

China

CIFOR

Context Global Development

Cornell University, United States

CropLife International, Belgium

Development Alternatives, Inc., United States

Digital Green, United States

Economic & Social Research Council, United Kingdom

Edesia Nutrition, United States

Egyptian Food Bank

Ethiopian Agricultural Transformation Agency

European Commission

FHI 360, United States

Flanders International Cooperation Agency, Belgium

Food and Agriculture Organization (FAO)

Ford Foundation, United States

Foundations Alliance for Africa (SAfA)	International Rice Research Institute (IRRI)	Regional Network for Agricultural Policy Research Institutes (ReNAPRI), Zambia	United States Department of Agriculture (USDA)
Gates Foundation, United States	Iowa State University, United States	Research Triangle Institute (RTI) International, United States	University of Arizona, United States
German Federal Ministry of Economic Cooperation and Development (BMZ)	Ireland	Rural Development Administration of the Republic of Korea	University of California, United States
German Society for International Cooperation (GIZ) GmbH	Japan	SAARC Agricultural Centre (SAC)	University of Groningen, Netherlands
Global Alliance for Improved Nutrition, Switzerland	Johns Hopkins University, United States	Save the Children, United States	University of Maryland, United States
Greater Horizons, United States	Latin American Center for Rural Development (RIMISP), Chile	Shamba Centre for Food & Climate, Switzerland	University of Nebraska, United States
Happel Foundation, Switzerland	Massachusetts Institute of Technology, United States	Social Fund for Development, Egypt	University of Notre Dame, United States
HarvestPlus Solutions	Mastercard Foundation, Canada	Solidaridad North America, Netherlands	University of Nottingham, United Kingdom
Hayel Saeed Anam Grou, UAE	Mathematica Policy Research, United States	South Africa Reserve Bank	University of Washington, United States
HereWeGrow, Germany	Max & Ingeburg Herz Stiftung, Germany	Target Foundation, United States	University of Zurich, Switzerland
India	Michigan State University, United States	The Brookings Institution, United States	Viamo, Canada
Institute of Food Technologists, United States	Millennium Challenge Corporation, United States	The Church of Jesus Christ of Latter-Day Saints, United States	Walmart Foundation, United States
Inter-American Development Bank	Ministry of Agriculture, Democratic Republic of Congo	The Rockefeller Foundation, United States	Windward Fund, United States
International Center for Tropical Agriculture (CIAT)	Ministry of Agriculture, Food and Rural Affairs (MAFRA), Republic of Korea	Tufts University, United States	World Bank
International Crops Research Institute for the Semi-Arid Tropics (ICRISAT)	National Science Foundation, United States	UN Women	World Food Programme (WFP)
International Development Research Centre (IDRC)	NIRAS Asia Manila Inc., Philippines	United Arab Emirates	World Resources Institute, United States
International Fund for Agricultural Development (IFAD)	Nutrition International, Canada	United Kingdom	World Vision, Canada
International Labour Organization	Organisation for Economic Co-operation and Development (OECD)	United Nations Children's Fund (UNICEF)	World Vision, Inc.
International Livestock Research Institute (ILRI)	Partnership for Economic Policy (PEP)	United Nations Development Programme (UNDP)	World Vision, United States
International Maize and Wheat Improvement Center (CIMMYT)		United States Agency for International Development (USAID)	
International Potato Center (CIP)			



INTERNATIONAL
FOOD POLICY
RESEARCH
INSTITUTE

IFPRI

INTERNATIONAL FOOD POLICY RESEARCH INSTITUTE

A world free of hunger and malnutrition

IFPRI is a CGIAR Research Center

IFPRI Headquarters

1201 Eye Street NW, 12th floor
Washington, DC 20005 USA
Phone: +1-202-862-5600
Fax: +1-202-862-5606
Email: ifpri@cgiar.org

IFPRI Africa

Almadies, Parcelles 22
Zone 10, Lot 227
Dakar, Senegal
Phone: +221-33-869-98-00
Email: ifpri-dakar@cgiar.org

IFPRI South Asia

Block C, NASC Complex, DPS Marg
Opposite Todapur, Pusa
New Delhi 110012
India
Phone: +91-11-66166565
Fax: +91-11-66781699
Email: ifpri-newdelhi@cgiar.org

Copyright 2025 International Food Policy Research Institute. All rights reserved. Contact ifpri-copyright@cgiar.org for permission to republish.

www.ifpri.org | www.ifpri.info

Handle: <https://hdl.handle.net/10568/174592>