

The Monthly Maize Market Report was developed by researchers at IFPRI Malawi with the goal of providing clear and accurate information on the variation of maize prices in selected markets throughout Malawi. The reports are intended as a resource for those interested in maize markets in Malawi, namely producers, traders, consumers, or other agricultural stakeholders.

Highlights

- Retail prices of maize decreased by 2 percent since October 2021.
- ADMARC purchases were reported in 12 out of the 26 markets monitored by IFPRI.
- ADMARC sales were reported in 11 out of the 26 markets monitored by IFPRI.
- Retail prices in Malawi were lower than elsewhere in eastern Africa and on SAFEX.

Prices decreased by 2 percent since October 2021

During November 2021, maize retail prices averaged at MWK146/kg. This is 2 percent lower than October 2021 and 26 percent lower than November 2020. However, during the month, retail prices started picking up.

As 2021/22 farming season is just starting, reports from traders indicate that some farmers are selling off their maize to buy farm inputs such as inputs from Affordable Input Programme (AIP) which is currently underway. Additionally, Farmers are also releasing their maize as in-kind payment for farm preparation activities. This has eventually increased maize supply on market.

Within the month, there was a wide range of maize retail prices starting from as a low as MWK100/kg in Jenda and Mzimba and as high as MWK200/kg in Chikwawa. Again, some markets registered price increase as high as 20 percent in Chitipa and price decrease as low as 2 percent in Mpondabwino.

Prices remain highest in the South

As is the usual pattern, retail prices in the South remained highest. In addition to geographical price variations, reports from our traders indicate that most of the maize that is being sold in the South is currently being sourced from the Center in the districts such as Dedza, Ntcheu, Lilongwe and

Figure 1. Daily average maize retail prices since October 2021

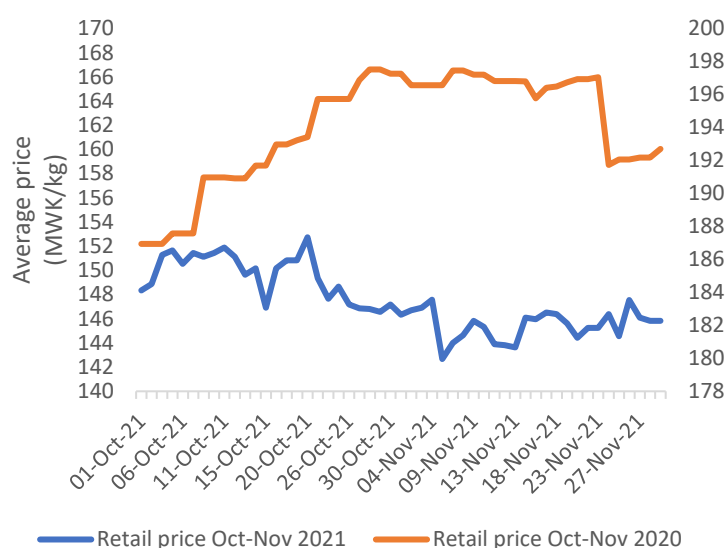
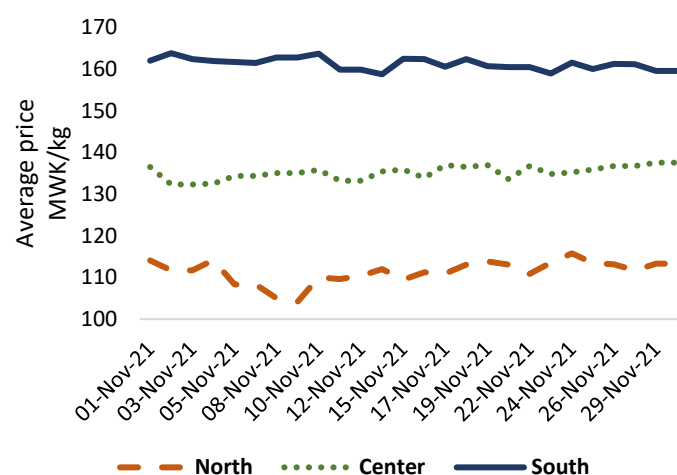


Figure 2. Daily average maize retail prices by region during November 2021



Mchinji. Hence, traders in the South are adding a transport markup to the prices from the center.

Table 1. Maize retail prices (MWK/kg) by market

	Oct					Nov	
	Average	06-Nov-21	13-Nov-21	20-Nov-21	27-Nov-21	Average	Change
Chitipa	100	100	100	110	120	106	↑6%
Jenda	114	100	100	107	100	102	↓11%
Karonga	121	110	115	115	113	113	↓6%
Mzimba	97	100	100	100	105	101	↑4%
Mzuzu	131	-	113	125	113	115	↓13%
Rumphi	127	118	128	122	122	123	↓3%
Chimbiya	121	120	123	113	120	118	↓2%
Mchinji	130	130	128	128	127	128	↓2%
Mitundu	136	130	130	130	130	130	↓5%
Nsungwi	140	140	140	140	140	140	→0%
Salima	148	160	157	160	160	159	↑7%
Balaka	147	130	133	143	130	136	↓8%
Bangula	184	177	171	171	185	176	↓4%
Chikwawa	200	200	200	200	200	200	→0%
Chiringa	168	170	160	150	150	157	↓7%
Liwonde	151	150	160	150	150	153	↑1%
Luchenza	168	160	160	160	160	160	↓5%
Lunzu	160	160	160	160	157	159	↓1%
Mangochi	158	160	160	160	155	159	↑1%
M'baluku	160	160	160	160	160	160	→0%
Mbayani	171	179	190	180	170	179	↑4%
Mpondabwino	179	169	164	160	165	165	↓8%
Mulanje	168	160	160	160	160	160	↓4%
Mwanza	173	170	170	180	180	177	↑2%
Ngabu	166	160	160	160	160	160	↓3%
Nsanje	161	160	160	160	160	160	↓1%
All markets	148	144	144	144	146	146	↓2%

As at the end of the month, prices in the South averaged MWK 161/kg (3 percent lower than last month), in the Center averaged MWK 135/kg (1 percent higher than last month), while in the North prices averaged at MWK 112/kg (4 percent lower than last month).

ADMARC Activities

ADMARC purchases were reported in 12 out of the 26 markets monitored by IFPRI. Proportionately, ADMARC purchases were more concentrated in the markets from the North. Some traders from the South reported that some ADMARC depots have been used as storage for

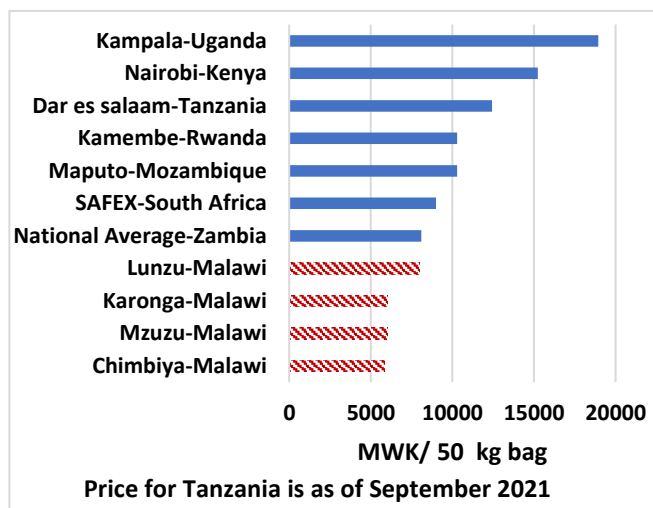
Affordable Inputs Programme (AIP) fertiliser. Hence, ADMARC does not have enough storage for maize purchasing from those markets.

ADMARC sales were reported in 11 out of the 26 markets monitored by IFPRI. ADMARC is selling maize at MWK 205/kg, 39 percent higher than average retail price in November 2021.

Regional prices

As of the end of November, retail prices of maize in the Malawian markets were lower than in selected regional markets in eastern Africa and on SAFEX (the main grain futures market in South Africa). Prices in Lunzu were marginally lower than Zambia's national average of November 2021, but still lower than elsewhere in the region.

Figure 3. Retail maize prices in selected markets in eastern and southern Africa (as of November 2021)



How data was collected

IFPRI Malawi has been monitoring retail maize prices and ADMARC activities in selected markets since December 2016. Currently, data is collected from 26 markets across the country, with monitoring occurring six days per week, excluding Sundays. At least three monitors report data from each of these markets. Data is collected by means of automated short message service (SMS) with follow-ups made by telephone if necessary. Regional prices reported in Figure 3 are sourced from Food and Agriculture Organization's Global Information and Early Warning System (FAO-GIEWS), IFPRI Malawi, the Johannesburg Stock Exchange (JSE), and the Zambia Statistics Agency.



For further information contact

Aubrey Jolex (A.Jolex@cgjar.org) at IFPRI Malawi.

To learn more about our work, visit www.massp.ifpri.info or follow us on Twitter (@IFPRIMalawi).